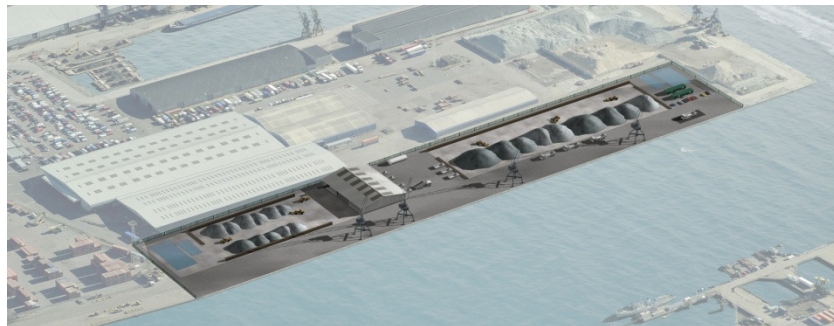


ASH SEPARATION SYSTEM for BALLAST PHOENIX at TILBURY, UNITED KINGDOM



Ash Separation System including:

- **1 Chrizzly feeder**
 - **2 Conveyor belts 400 width**
 - **3 Conveyor belts 650 width**
 - **6 Conveyor belts 800 width**
 - **5 Conveyor belts 1000 width**
 - **3 Conveyor belts 1400 width**
 - **1 Screen Mogensen screen**
 - **1 Trommel 4/2000**
 - **2 Eddy current systems with vibratory feeder**
 - **2 Air separation system**
 - **2 Permanent overband magnet**
 - **1 Chrusher**
 - **1 Total construction incl, stairs and walkways**
 - **Output 100ton/hour**
-
- **Delivery, installation, commissioning, training**

**Contract signed June 2009
Handing over March 2010**



SWT
WASTE TECHNOLOGY



SWT
WASTE TECHNOLOGY

Industrieweg 2
NL-5731 HR Mierlo

P.O. Box 47
NL-5730 AA Mierlo

T +31 (0)492 664 885
F +31 (0)492 664 495

info@wastetechnology.eu
www.wastetechnology.eu

CoC O. Brabant: 55177395
VAT: NL851596447B01

a division
of SMA BV



SWT
WASTE TECHNOLOGY



SWT
WASTE TECHNOLOGY

Industrieweg 2
NL-5731 HR Mierlo

P.O. Box 47
NL-5730 AA Mierlo

T +31 (0)492 664 885
F +31 (0)492 664 495

info@wastetechnology.eu
www.wastetechnology.eu

CoC O. Brabant: 55177395
VAT: NL851596447B01

a division
of SMA BV

