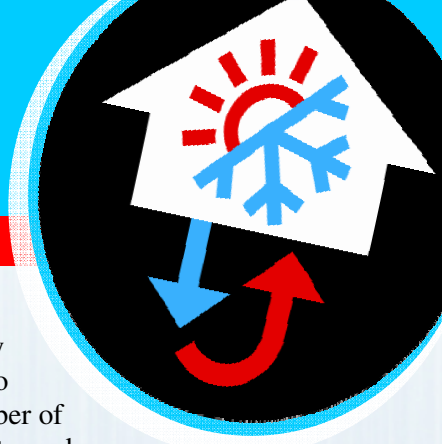




605-225-9822



In This Issue:

How dangerous is CO₂ in the home?
Page 1 & 2

Newsletter Winners
Page 1

Dust Control
Page 2

Radon
Page 2

Instant Rebates
Page 3

Trusty's Corner
Page 3

Win \$100.00
Page 4

How dangerous is CO₂ in the home?

What is Carbon Dioxide?

Carbon dioxide (CO₂) is a gas that the human body produces naturally. Everyone is exposed, to some degree, to this gas every day. It occurs naturally in the Earth's atmosphere as part of animal metabolism, plant photosynthesis, decomposition, and combustion. The gas is colorless, odorless, tasteless, non-combustible, is soluble in water and makes up slightly less than 0.5% of our atmosphere. CO₂ is classified as a 'greenhouse gas' and increasing CO₂ is debated to be one of the main causes of global warming.

How dangerous is it?

Carbon dioxide is an often-overlooked killer. Although the air always contains an amount of CO₂ that we breathe in and out every day, and is perfectly harmless in normal conditions, a build-up of CO₂ in the air will cause humans and animals to absorb less oxygen into their bloodstream, instead increasing the levels of CO₂ in the bloodstream in its place. This will slowly starve the body of oxygen, leading to brain damage and even death.

Carbon dioxide in the home

Carbon dioxide accumulation inside the

home is normally related to the number of occupants, and concentration of the gas is usually highest where homeowners spend most of their time. Appliances in the home can create extra CO₂ in the atmosphere, so making sure that they are all serviced and functioning correctly is essential.

For example, combustion produces CO₂, so boilers, furnaces, and water heaters are fitted with a special flue that directs the gas up and out of the home without it leaking into the household air. It is rare, but sometimes these flues can become damaged and allow CO₂ to seep into the house, causing a higher ratio of CO₂ in the air, which could be dangerous. To prevent this, it is strongly advised that you service your equipment thoroughly by a qualified Service Professional, who will check for any leaks or damage. Keeping your home well ventilated is key to preventing a build-up of CO₂.

Knowing when levels are too high

Since increasing levels of CO₂ encourage plant growth, an unusual flowering or blooming of household plants may indicate an overabundance of carbon dioxide. Also, carbon dioxide by nature is 1.5 times heavier than air, and therefore

Continued on page 2



Rod & LoAnn
Melinsky
\$100

Newsletter Winners



George Casanova
\$50

How dangerous is CO2 in the home?

Cont'd from page 1

tends to 'pool' in low areas such as basements.

Below you'll see levels measured and the affects to watch out for:

% Air	Parts per million	Affects
0.4	250-350	Normal background concentration in outdoor ambient air
0.1	350-1,000	Concentrations typical of occupied indoor spaces with good air exchange
0.2	1,000-2,000	Complaints of drowsiness and poor air
0.5	2,000-5,000	Headaches, sleepiness and stagnant, stale, stuffy air. Poor concentration, loss of attention, increased heart rate and slight nausea may also be present
0.5	5,000	Workplace exposure limit (8-hour TWA)
4	>40,000	Exposure may lead to serious oxygen deprivation resulting in permanent brain damage, coma or even death

Humans breathe in oxygen (O₂) and exhale carbon dioxide (CO₂). When a home has poor ventilation, carbon dioxide levels can rise. Measuring carbon dioxide (CO₂) levels above 750 ppm indicates that ventilation could be a concern in the home. When carbon dioxide levels exceed 1,000 ppm it can lead to feeling groggy and tired.

Call Climate Control to have an Air Quality Test done in your home.

605-225-9822



www.climatecontrolprofessionals.com

SPECIAL DISCOUNT COUPON

Cannot be combined with any other discount offer. Limit one per customer.

Save
\$25
on any repair



www.climatecontrolprofessionals.com

SPECIAL DISCOUNT COUPON

Cannot be combined with any other discount offer. Limit one per customer.

Save
\$50
for Radon Testing

What is Dust Control?

If you live on a gravel road or run a business with a gravel parking lot, you know how inconvenient road dust can be. Your neighbors at Climate Control know firsthand so we offer the industry-best solution for South and North Dakota dust control.

RoadSaver is a safe option for dust suppression that is applied over gravel to achieve road dust control. It is formulated with magnesium chloride which the US Department of Agriculture classifies as the least harmful dust suppressant to vegetation and groundwater.

RoadSaver is a liquid dust control that works by keeping fine particles on the road which limits the dust in the air and offers the secondary benefit of improving road quality and providing erosion control.

Call 605-225-9822 for a quote or more information!

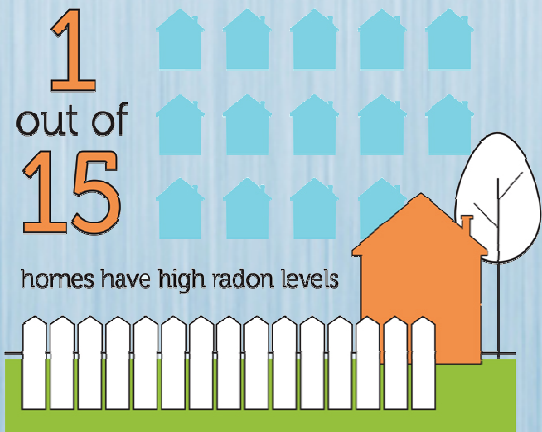
Watch for your pre-pay letter in the mail, coming in March.

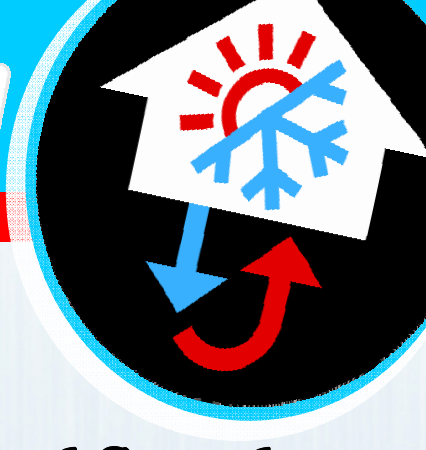
Protect Your Family From Radon!

Thank you for all your help and guidance on our radon concerns! The levels by our sump pump have gone down from an 8-9 pCi/L to averaging a .4 to .6 pCi/L! I'm so happy! The mitigation fan/system works as it should and I wish we would have done this years ago! I honestly can't imagine people NEVER checking their radon levels and reducing at least ONE cancer risk in life! THANK YOU!!! I will always brag up Climate Control!! ~ Laura & Shane Clark

1 in 15 homes have high radon levels. The good news is that you can check your home with a simple test - and if your home has high levels of radon, Climate Control can help you fix it!

Call today to rent a Radon detector to check your home.





HOW TO SHORTEN THE WINTER MONTHS

Winter is the season that most people dread as they count down the weeks, days and hours until the temperature starts to climb. If you meet each winter with trepidation and want it to pass more quickly, here are some tips to get you through the



Play a winter sport

Depending on where you live, skiing or hockey might be popular and available. You might prefer ice fishing, skating or curling. The list of options is endless. And if you're trying for the first time, the combination of learning something new and expanding your social circles might turn winter into your favorite time of year.



Take up an indoor hobby

If anything to do with outdoors or ice sends shivers up your spine, staying busy indoors might be just the thing you need. Painting, baking or woodworking in a (heated) garage are some of the fun activities that will help you ignore old man winter until he's gone. Make it a winter-only event and you might find yourself looking forward to the colder weather.



Do an indoor renovation project

Do you have projects around the house that you've been neglecting? If you couldn't find the time during camping season, now's the best season to get it done. You'll feel productive and by the time the snow melts, you'll have something to show off.



Plan a fun winter vacation instead of waiting for the summer

Most people plan getaways in the summer. This crowds airports, campsites and resorts. If you had intentions of visiting the Caribbean in the summer, why not make it a winter escape instead? Splitting the winter season with a break on a toasty beach is sure to make it go by faster.



Hibernate a bit

After the long daylight hours of summer having non-stop fun, you need a break. Late bedtimes while the sun streams through the curtains will eventually take a toll on your body.

Use the long chilly nights to snuggle in for a long rest. Slow things down and let your body recover for next year. Your body will thank you and you'll sleep away a portion of the season.

Dealing with winter shouldn't include having issues with your heating and plumbing. If you need to make sure you're warm and ready for the cold weather, give us a call so you can focus on the fun stuff!

Trusty's Word Search

S	E	T	C	L	I	M	A	T	E	C	O	N	T	R	O	L
P	C	H	X	A	L	T	Y	A	M	D	O	U	O	Z	X	Z
A	A	E	D	W	O	L	F	R	I	A	E	B	N	D	Q	P
R	N	R	O	S	S	E	R	P	M	O	C	J	G	V	A	S
T	R	M	N	Z	O	N	I	N	G	O	N	M	U	T	S	R
I	U	O	A	R	X	P	E	F	F	I	C	I	E	N	C	Y
C	F	S	Z	H	U	M	I	D	I	S	T	A	T	I	J	M
L	H	T	S	P	T	D	U	C	T	W	O	R	K	W	L	O
E	Z	A	K	U	C	X	V	E	N	T	I	L	A	T	O	R
S	V	T	J	G	Z	R	C	H	K	B	E	T	D	E	W	

- | | | |
|----------------|---------------|---------------------|
| 1. Airflow | 2. Compressor | 3. Furnace |
| 4. Ductwork | 5. Thermostat | 6. Zoning |
| 7. Efficiency | 8. Humidistat | 9. Particles |
| 10. Ventilator | 11. Radon | 12. Climate Control |

CHA-CHING.

ENERGY EFFICIENCY + EQUIPMENT REBATES.
SAVING MONEY HAS NEVER BEEN SO EASY!

UP TO **\$1,050** IN REBATES
OR **0% FINANCING** FOR 60 MONTHS

Coleman
HEATING & AIR CONDITIONING

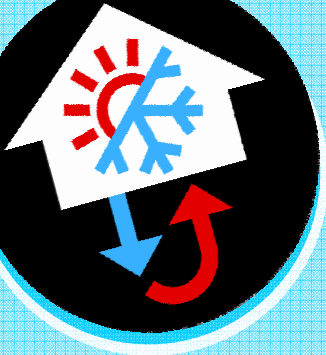
CALL TODAY!
605-225-9822

CLIMATE CONTROL

climatecontrolprofessionals.com



W	E	D	T	E	R	C	C	K	H	E	B	E	T	D	E	S
R	O	L	V	L	I	N	E	A	X	C	U	K	U	Z	A	V
O	T	M	K	W	R	K	O	M	T	C	U	C	P	L	D	L
Y	M	J	I	M	I	S	T	A	T	I	S	T	A	T	I	J
C	F	S	Z	H	U	M	I	D	I	S	T	A	T	I	J	M
I	U	O	A	R	X	P	E	F	F	I	C	I	E	N	C	Y
R	N	R	O	S	S	E	R	P	M	O	C	J	G	V	A	S
T	R	M	N	Z	O	N	I	N	G	O	N	M	U	T	S	R
A	A	E	D	W	O	L	F	R	I	A	E	B	N	D	Q	P
Z	A	K	U	C	X	V	E	N	T	I	L	A	T	O	R	
S	V	T	J	G	Z	R	C	H	K	B	E	T	D	E	W	



1910 130th St NW
Aberdeen, SD 57401

605-225-9822

climatecontrolprofessionals.com

In This Issue:

How dangerous is CO₂ in the home?

Page 1 & 2

Newsletter Winners

Page 1

Dust Control

Page 2

Trusty's Corner

Page 3

Instant Rebates

Page 3

WIN \$100 WITH CLIMATE CONTROL

Limit 1 entry per person. No purchase necessary. A purchase will not improve your chances of winning. Winner will be selected at random within 30 days of entry deadline. All decisions are final. All entrants agree to contest rules, which require winner to sign a prize and publicity release unless precluded by law. Must be 18 to enter. Failure to comply results in disqualification. Entries void if incomplete or illegible. No responsibility is assumed for lost, late, or illegible entries. Company employees and family members are ineligible. Odds depend on the number of entries received. Acceptance of the prize implies consent to use name and image in promotional material with the prize as compensation. All taxes are the responsibility of the winner.

Complete and return for a chance to win \$100 cash. If you correctly answer the three questions below, we'll enter you in a drawing for \$100 cash. Second prize will be \$50 cash. All entries must be received by 2/15/2019 Mail to: Climate Control, 1910 130th St. NW, Aberdeen, SD 57401 or scan and email to info@climatecontrolprofessionals.com

- 1.) Unusual blooming or flowering of household plants could be a sign that there is an _____ of _____.
- 2.) What does Trusty spend his day doing? _____.
- 3.) Where is the highest concentration of CO₂ usually found in the home?

Please Contact me about:

- | | |
|--|---|
| <input type="checkbox"/> Service Maintenance Agreement | <input type="checkbox"/> Air Filtration |
| <input type="checkbox"/> Upgrading Heating/Cooling Equipment | <input type="checkbox"/> UV Light |
| <input type="checkbox"/> Dehumidifier | <input type="checkbox"/> Water Softeners |
| <input type="checkbox"/> Humidifier | <input type="checkbox"/> Water Heaters |
| <input type="checkbox"/> All Types of Boilers | <input type="checkbox"/> Fire Pits |
| <input type="checkbox"/> Air Quality/Mold Testing | <input type="checkbox"/> Fireplaces (wood, gas, electric) |
| <input type="checkbox"/> Radon Testing/Removal | <input type="checkbox"/> Pool Heaters |
| | <input type="checkbox"/> Dust Control |
| | <input type="checkbox"/> Ice Melt |
| | <input type="checkbox"/> Electrical |

Name: _____

Address: _____

City: _____ State: _____ Zip: _____

Email: _____

Phone: _____