

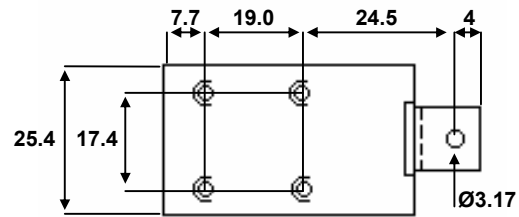
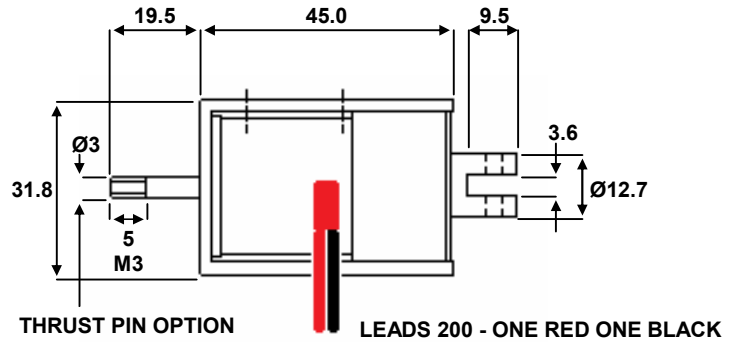
# BLM3 DC LATCHING SOLENOID

**Availability**  
DC only  
PULL - THRUST - PULL & THRUST

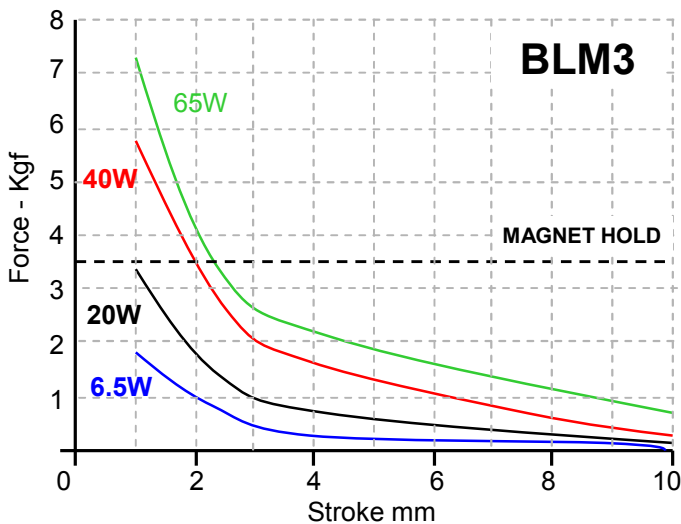
**Solenoid shown in energised position**

Weight complete 167g  
Plunger weight 45g max

Solenoid CLOSSES with  
**RED** Lead + VE  
Solenoid OPENS with  
**BLACK** Lead + VE



4 - M4 X 0.7 FIXING HOLES  
DIMENSIONS IN MM



Forces shown are at working temperature  
Cold forces are higher

Minimum Pulse duration - 100ms  
De-latch power - 2.5W

\*\* Please note: Fixing, plunger coupling, thrust rods and lead length can all be customised \*\*

*We reserve the right to alter or amend designs without prior notice.*

**HE & BS Benson Ltd**

1 Laureate Industrial Estate, Exning Road, Newmarket, Suffolk UK CB8 0AR

T. +44(0)1638 663535 – 663130 F. +44(0)1638 667434 E. sales@hebsbenson.co.uk www.hebsbenson.co.uk