

# Multiviewers For Every Application



**Real-time processing — no dropped frames**

**Designed for robust 24/7 operation**

**Supports resolutions up to 4K UHD**

**Video and graphic inputs**

**Integrated KVM**



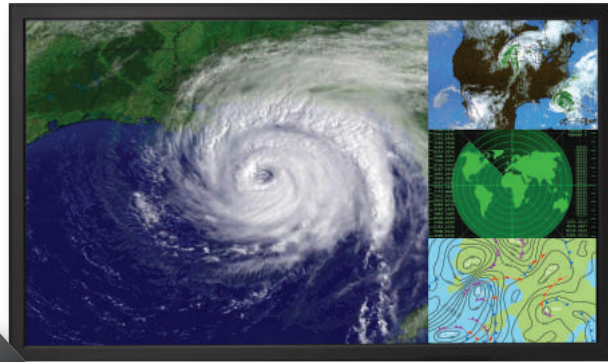
## Multiviewer Portfolio

RGB Spectrum's *QuadView*® UHD, HDx, and *SuperView*® 4100, and 4K Multiviewers excel in their ability to display multiple high resolution video and computer sources on a single screen. From the board room to teleconferencing to high-end home theaters, our multiviewers offer customers an extraordinary level of performance. A dedicated system architecture and embedded operating system provide enhanced security and reliability without PC vulnerabilities for mission-critical applications.

### QuadView® UHD

#### — Speed, Simplicity, Superb Quality

The *QuadView* UHD Multiviewer is a high-performance multi-image processor and presentation scaler/switcher that displays up to 4 sources simultaneously on a single screen in a variety of creative layouts.



4 Windows

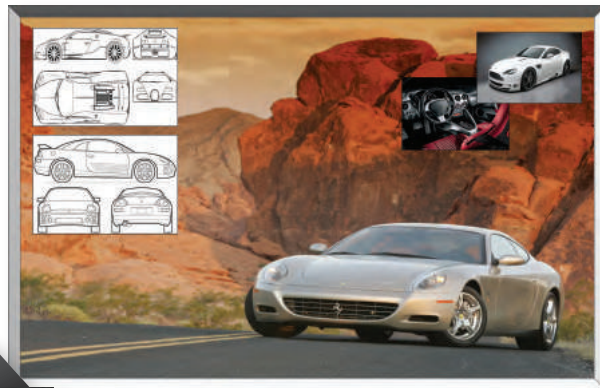
#### Features:

- Full range of input and output formats
- Up to 4K UHD input/output
- 16 preset layouts
- Audio follow and audio breakaway modes
- Auto scaler for every input
- Front panel buttons
- Wireless remote control
- HDCP compliant

### QuadView® HDx

#### — Compact, Powerful, Robust

The *QuadView* HDx Multiviewer offers the most powerful image processing solution in the industry — with outstanding image quality, dynamic window sizing, and RGB Spectrum's renowned real-time processing.



4 Windows + Background

#### Features:

- Full range of input and output formats
- Real-time, dynamic window scaling
- Windows any size, anywhere
- Pan and zoom, titles and borders
- Programmable presets
- On screen cursor control
- HDCP option
- NTSC/PAL input option
- Integrated KVM option

## SuperView® 4100

### — Flexible, Secure, Reliable

For more demanding applications, the *SuperView 4100* Multiviewer builds on the power of the *QuadView HDx* and features eight windows, complete layout flexibility, and RGB Spectrum's superb image quality.



8 Windows

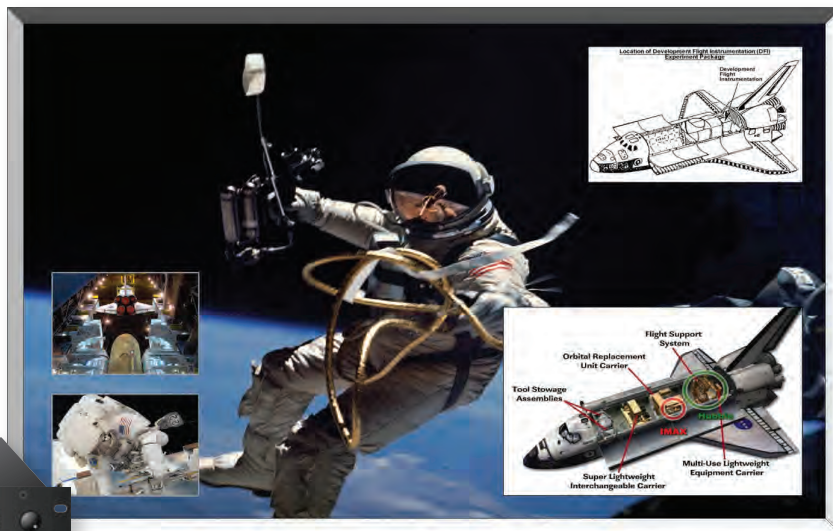
#### Features:

- Full range of input and output formats
- Single or dual-link DVI outputs
- Dynamic window scaling
- Windows any size, anywhere
- Pan and zoom, titles and borders
- Programmable presets
- On screen cursor control
- HDCP compliant
- Integrated KVM option
- Dual outputs

## SuperView® 4K

### — Eight MegaPixels of Power

The *SuperView 4K* Multiviewer is designed for Ultra HD panels and projectors. With the ability to display up to eight high resolution graphic or video images, including 4K imagery, *SuperView 4K* meets the demand for today's new wave of 4K visualization.



Up to 8 Windows

#### Features:

- Full range of input and output formats
- Accepts 2K and 4K sources
- Single or dual-link DVI outputs
- Realtime, dynamic window scaling
- Windows any size, anywhere
- Programmable presets
- HDCP compliant
- Integrated KVM option

# Specifications

	QuadView UHD	QuadView HDx & HDxv	SuperView 4100	SuperView 4K
<b>Windows</b>	4	4	8	8
<b>Inputs</b>				
<b>RGB/HD</b>	1x (on 15-pin HD)	4x (on 15-pin HD)	8x (on DVI-I)	8x (on DVI-I)
<b>DVI</b>		4x (on DVI-I, digital only)	8x (on DVI-I single-link 1.0)	8x (on DVI-I)
<b>HDMI</b>	4x (v1.4b)		8x (1.3a)	8x (1.3a)
<b>DisplayPort</b>	2x (v1.2)			
<b>Background Composite/Component</b>		1x (on DVI-I, digital only) Up to 16x (on BNC), component configurable on QV HDxv		
<b>Resolution</b>	640x480 to 1920x1200, 2048x1152, 720p, 1080i, 1080p 3840x2160	640x480 to 1920x1200, 2048x1152, 720p, 1080i, 1080p	640x480 to 1920x1200, 2048x1152, 720p, 1080i, 1080p	640x480 to 1920x1200, 2048x1152, 720p, 1080i, 1080p 3840x2160, 4096x2160
<b>Color depth</b>	24-bit	24-bit	24-bit	24-bit
<b>HDCP</b>	Standard	Option	Standard	Standard
<b>Audio</b>	6x (HDMI or DP embedded), 7x (Stereo, analog, 3.5 mm)			
<b>Outputs</b>				
<b>RGB/YPbPr/HD</b>		1x (on DVI-I)		
<b>DVI single-link</b>		1x (on DVI-I)	2x (on DVI-I, digital only)	4x (on DVI-I, digital only)
<b>DVI dual-link</b>		1x (option) on DVI-I	2x (on DVI-I, digital only)	
<b>HDMI</b>	1x (v1.4b)			
<b>Resolution</b>	Auto, 1024x768, 1280x720, 1280x800, 1600x1200, 1920x1080, 1900x1200, 3840x2160	640x480 to 1920x1200 and 2048x1080p	Up to 1920x1200, 2048x1080 Dual-link to 2560x1600	2k mode: single-link DVI, up to 1920x1200, HD to 2048x1080p 4K mode (SL): 4x single-link DVI, 3840x2160p, 4096x2160p 4K mode (DL): 2x dual-link DVI, up to 2560x1600p and 1920x2160 (per output)
<b>Pin power</b>		50 mA @ 5 VDC	500 mA @ 5 VDC per output	500 mA @ 5 VDC per output
<b>Audio</b>	1 × (HDMI embedded), 1 × Optical, 4x (Stereo 3.5-mm, 8 ch total)			
<b>Power</b>				
	100-240 VAC auto ranging 50/60 Hz, 15 W maximum	100-240 VAC auto ranging 50/60 Hz, < 45 W	100 - 240 VAC auto ranging 50/60 Hz, 125 W maximum	100 - 240 VAC auto ranging 50/60 Hz, 125 W maximum
<b>Control</b>				
	Ethernet 10/100/1000 Base-T, Telnet RS-232, Web interface	Ethernet 10/100Base-T, Telnet RS-232, Web interface	Ethernet 10/100Base-T, Telnet RS-232, Web interface	Ethernet 10/100Base-T, Telnet RS-232, Web interface
<b>Options</b>				
		BP-16 control panel	BP-16 control panel	BP-16 control panel
		HDCP	Redundant power supply	Redundant power supply
		Composite/component input	DVI dual-link output	
<b>Physical</b>				
	Width: 17.3 in/44.0 cm	Width: 17.0 in/43.2 cm	Width: 17.0 in/43.2 cm	Width: 17.0 in/43.2 cm
	Depth: 10.7 in/27.2 cm	Depth: 13.5 in/34.3 cm	Depth: 18.0 in/45.7 cm	Depth: 18.0 in/45.7 cm
	Height: 1.71 in/ 43.5 cm (1RU)	Height: 1.75 in/4.5 cm (1 RU)	Height: 3.5 in/8.9 cm (2 RU)	Height: 3.5 in/8.9 cm (2 RU)
	Weight: 7.3 lbs/3.3 kg	Weight: 13.5 lbs/6.1 kg	Weight: 25 lbs/11.4 kg	Weight: 25 lbs/11.4 kg



QuadView UHD



SuperView 4100

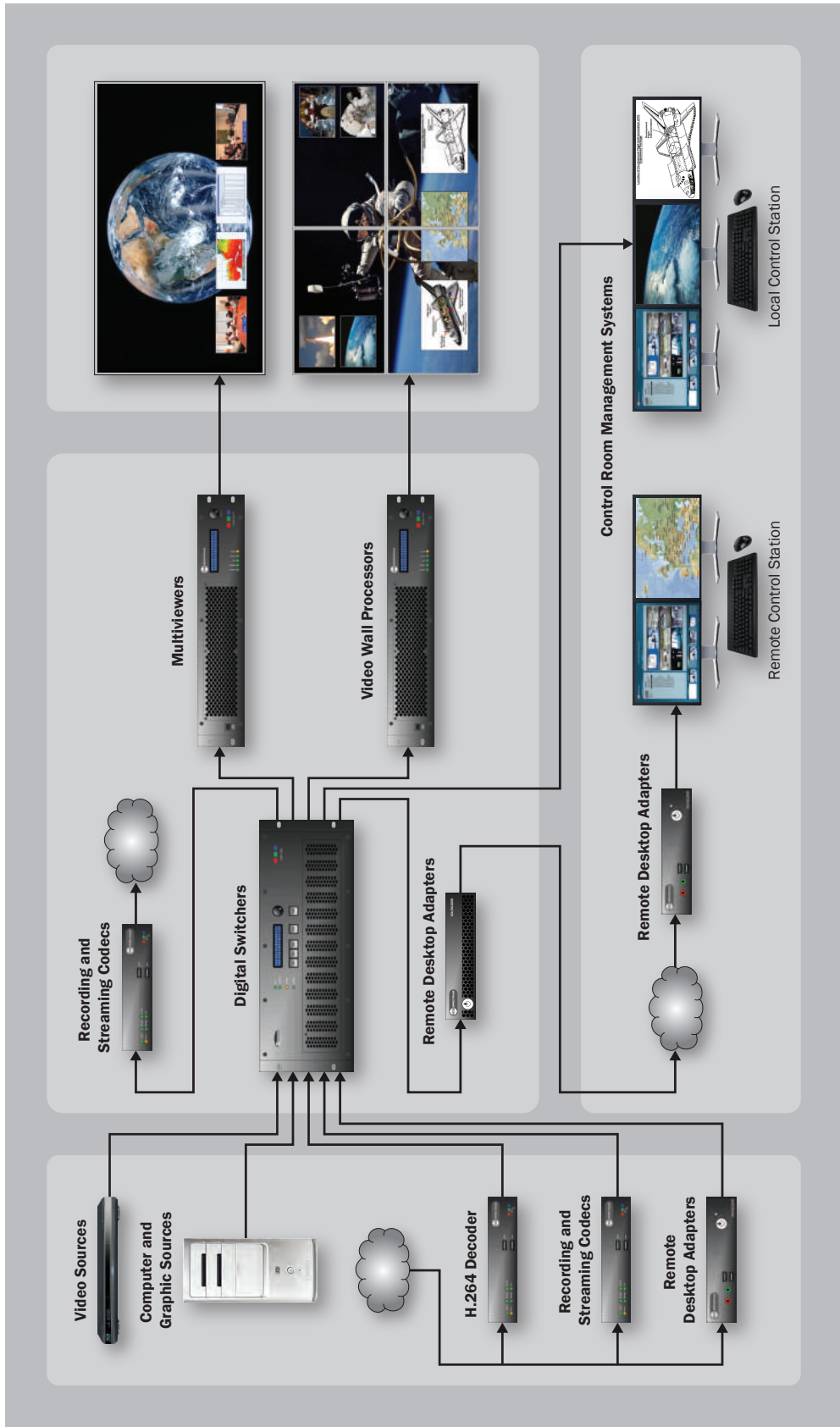


QuadView HDx

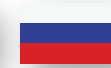


SuperView 4K

# VIDEO SOLUTIONS



Intelligent display processing ■ Video over IP ■ Remote operator control ■ Signal switching and distribution ■ Control room management



## Worldwide Offices

### Corporate Headquarters

950 Marina Village Parkway  
Alameda, California 94501  
TEL: (510) 814-7000  
FAX: (510) 814-7026  
WEB: [www.rgb.com](http://www.rgb.com)  
email: [sales@rgb.com](mailto:sales@rgb.com)

### European Headquarters

Davidson House  
Forbury Square  
Reading Berkshire RG1 3EU  
United Kingdom  
TEL: +44 (7976) 341801  
email: [europesales@rgb.com](mailto:europesales@rgb.com)

### Asian Headquarters

Floor 17-1557, Block B  
Utown International Office Building #7  
Sanfengbei Lane, Chaowai Street  
Chaoyang District  
Beijing, China  
TEL: +86 10 5780 3068  
email: [asiasales@rgb.com](mailto:asiasales@rgb.com)

### USA Offices

Alameda, California  
Atlanta, Georgia  
Baltimore, Maryland  
Boston, Massachusetts  
Cincinnati, Ohio  
Dallas, Texas  
Duluth, Georgia  
Long Island, New York  
Space Coast, Florida  
San Diego, California  
Seattle Washington

### Middle Eastern Headquarters

Suite 302, Yes Business Center  
Al Barsha 1, Dubai  
United Arab Emirates  
TEL: +971 4 513 4783  
CELL: +971 50 551 2741  
email: [middleeastsales@rgb.com](mailto:middleeastsales@rgb.com)  
[africasales@rgb.com](mailto:africasales@rgb.com)

### International Offices

Beijing, China  
Dubai, United Arab Emirates  
Medellin, Columbia  
Reading, United Kingdom  
Singapore, Singapore  
St. Petersburg, Russia



**SPECTRUM**

950 Marina Village Parkway Alameda, California 94501 (510) 814-7000 [sales@rgb.com](mailto:sales@rgb.com) [www.rgb.com](http://www.rgb.com)