

# GM Cables & Pipes (Pvt) Ltd.

## U-PVC Electrical Pipes



[gmcables.com](http://gmcables.com)



22-km, Ferozepur Road, Rohi Nala, Lahore, Pakistan  
Tel: +92-42-35276143-5 Fax: +92-42-35271705  
Email: [info@gmpipes.com](mailto:info@gmpipes.com)



## Introduction

Established in 1975 by late Muhammad Jahangir Chaudhary as a small housing wire manufacturing company, GM Cables & Pipes (Pvt) Ltd., with its customer's patronage, has grown as a leading manufacturer of Cables & Pipes in Pakistan.

GM Cables & Pipes (Pvt) Ltd. factory located at Ferozpur Road produces a distinguished range of Cables and Pipes and is well equipped with state-of-the-art manufacturing facility.

Research and innovation have been the corner stone of our strategy to win market share and customers' trust. We continue to strive for high value but economic solutions to suit our customers' needs.

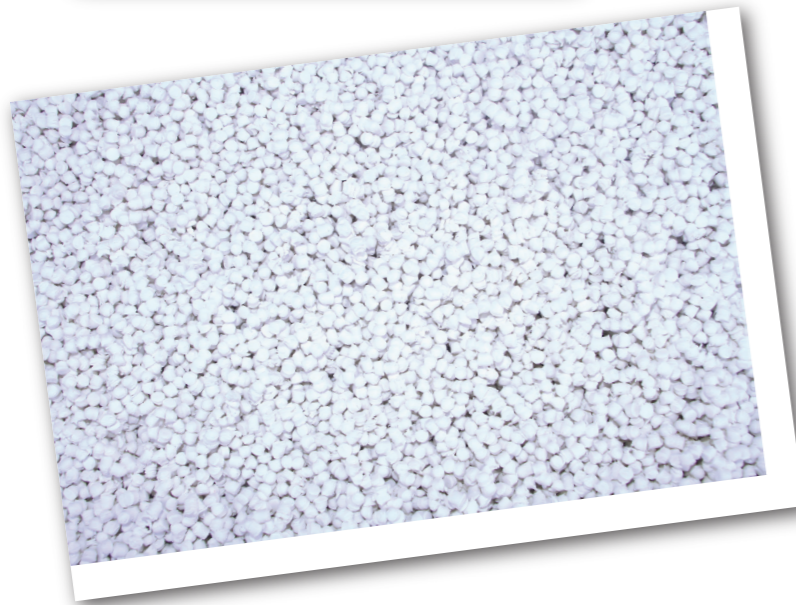
We have installed imported and latest machinery for producing quality products for electrical usage, water and sewerage system. Our team comprises of experienced and highly qualified professionals to produce quality products.

Addition of granular plant will ensure high quality inputs from our own resources to expand our trusted range of pipe products, ensuring quality and uninterrupted supply.



## Raw Material

The rapid development in field of polymers has opened new opportunities for manufacturing of pipes which are economical and cost effective. The U-PVC pipes have eliminated heavy and costly types of pipes. For this reason we are now manufacturing U-PVC Compounds for pipe productions. Our PVC granules plant produces all types of PVC granular required for the company's own pipe manufacturing units, meeting the highest international quality standards and best grades at competitive costs.



We aim at producing the highest quality granulars to fulfill market needs in near future. That will be a step towards self-reliance and lessening the cost of imports of our industry, thus making a humble contribution towards national economic growth. Our inputs are free from toxic and hazardous materials.

## GM U-PVC Pipes Major Usage

- Cable wiring (Electric Telecom)
- Sweet homes
- Multi stories buildings
- Commercial plazas
- Small & large industries



## Benefits of U-PVC Pipes

GM electric pipes are one of the best choice for (LT/ HT) electrical & telecom wirings. Some of its benefits are given below:

- Highly resistant to electric current
- Highly resistant to fire flow
- Highly resistant to breakage due to flexibility
- Light weight
- Low cost
- Easy to handle, store & use
- Long life (approx.50-60 years)



## GM U-PVC Electrical Pipes Dimensions

BSS- 6099/ Ps 1905

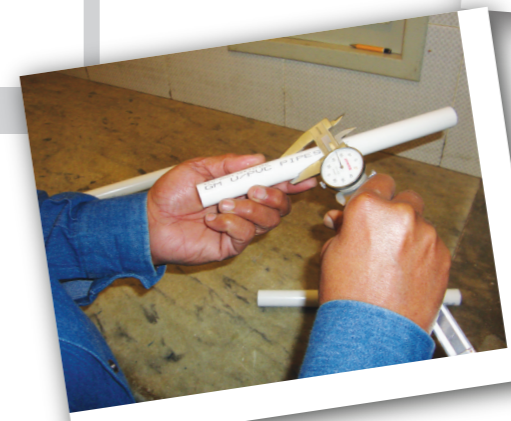
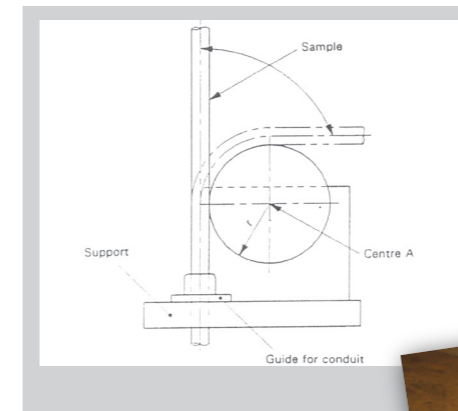
Size	Outer Diameter (mm)		Wall Thickness (mm)	
	Minimum	Maximum	Minimum	Maximum
1/2	17.0	17.3	0.96	1.16
3/4	21.2	21.5	1.09	1.26
1	26.6	26.9	1.16	1.36
1 1/4	33.4	33.7	1.44	1.67
1 1/2	42.1	42.4	1.60	1.84
2	60.2	60.5	1.70	1.90
3	88.7	89.1	1.80	2.00
4	114.1	114.5	1.90	2.10

**Manufactured to BSS 6099**  
**Standard Length: 1 1/2 to 2"**  
**On Demand: 3 to 4" Meter**  
**Color: Pearl White**

## Quality Assurance

GM Cables & Pipes (Pvt) Ltd. have developed and implemented a quality management system complying with international standards. The quality assurance team is dedicated to meet customers' trust and satisfaction. Our emphasis on Research & Development is mainly directed to product development, process development and technological up-gradation of the systems used. At GM Cables & Pipes (Pvt) Ltd., we never compromise on quality.

The quality assurance work starts with procurement of best possible raw material and continues with every step of manufacturing. The final product still is put through stringent tests, utilizing hi-tech testing equipment. Continuous up-gradation of our machinery and training of team are contributing factors for ensuring best quality.



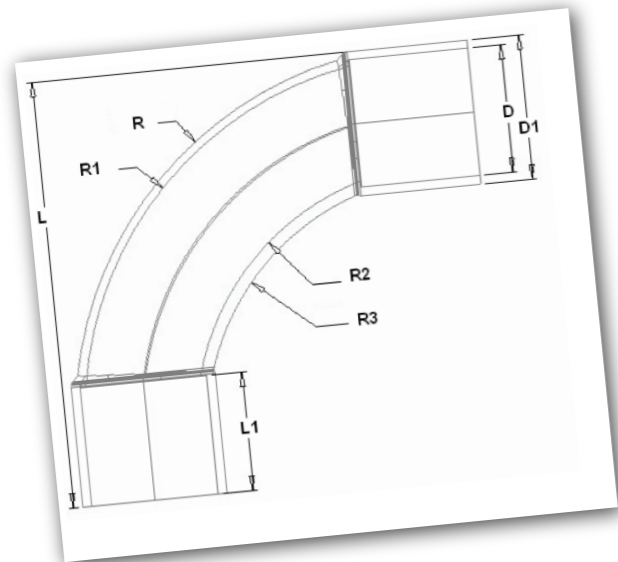
**GM Cables & Pipes (Pvt) Ltd.**  
**products mean quality and**  
**reliability**

# BEND

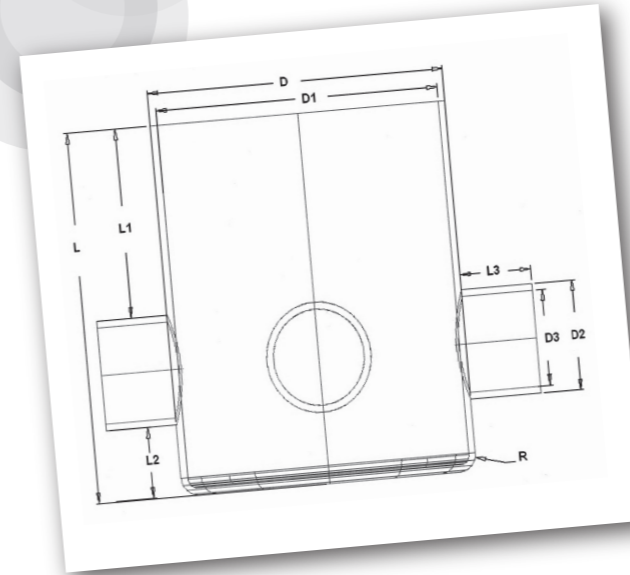


## DIMENSIONS Unit (mm)

Size	D	D1	L	L1	R	R1	R2	R3
1/2"	18.50	15.00	90.00	25.00	80.00	77.05	58.75	56.02
3/4"	25.00	90.00	25.00	77.00	76.24	76.24	54.43	52.14
1"	30.30	90.00	25.00	78.25	75.02	75.02	54.12	52.75
1 1/4"	37.10	150.00	28.25	139.00	137.30	137.30	108.00	106.02
1 1/2"	45.80	150.00	28.25	139.00	137.30	137.30	92.00	89.07
2"	63.90	150.00	28.25	139.00	137.30	137.30	77.95	75.05



# DOWN LIGHTER



## DIMENSIONS Unit (mm)

Special

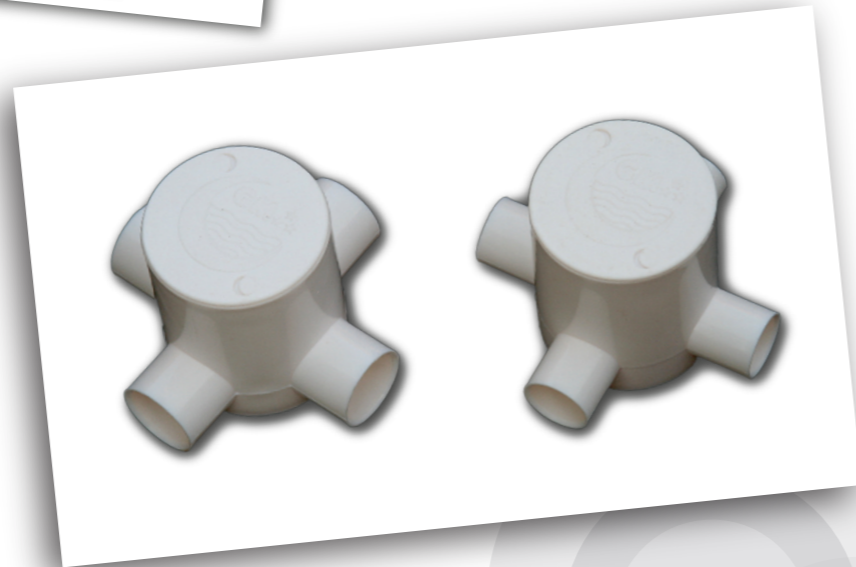
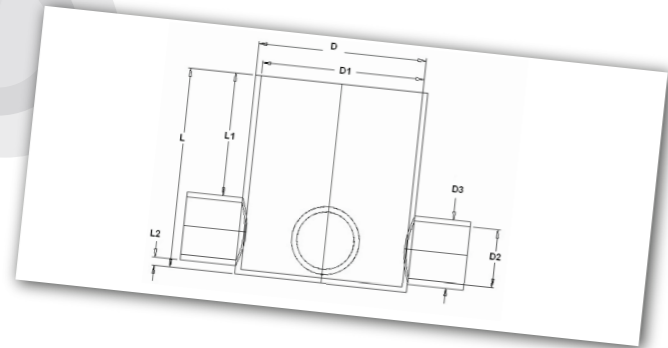
Size	D	D1	D2	D3	L	L1	L2	L3	R
3"	87.00	83.00	30.80	26.80	104.00	53.10	20.00	25.00	5.00
4"	106.00	102.00	30.80	26.80	115.00	64.00	20.00	25.00	6.00

## DIMENSIONS Unit (mm)

Regular

Size	D	D1	D2	D3	L	L1	L2	R
3"	87.00	83.00	30.80	26.80	104.00	53.10	20.00	5.00
4"	106.00	102.00	30.80	26.80	115.00	64.00	20.00	6.00

# JOINT BOX

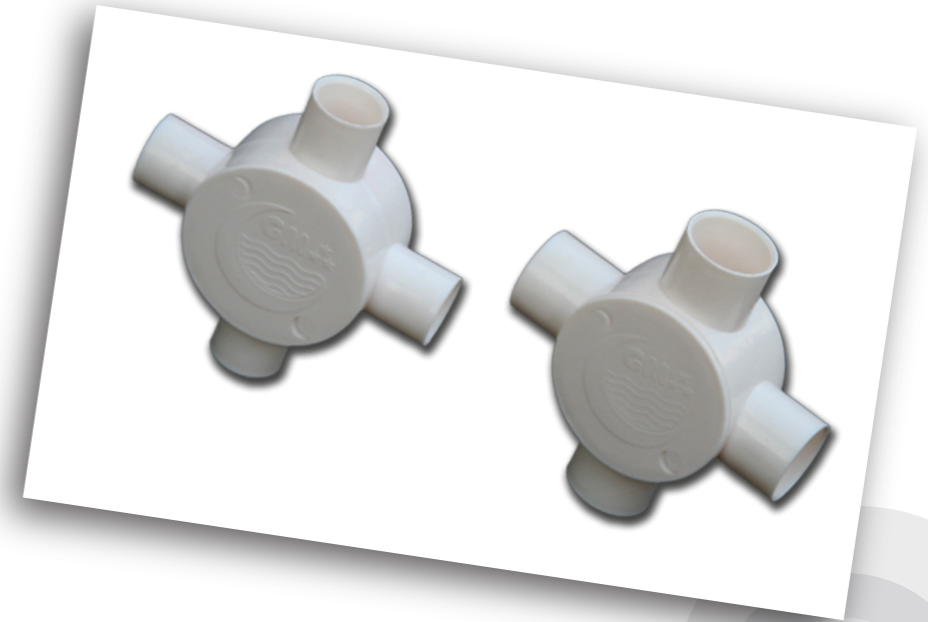
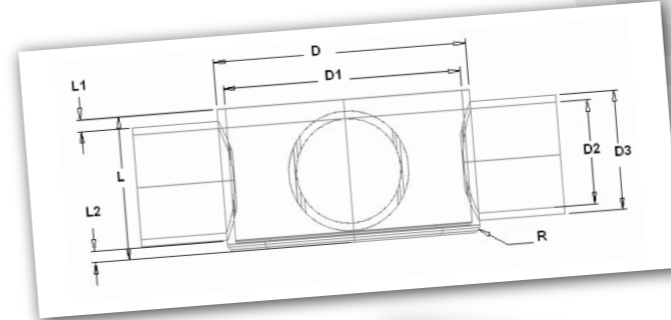


## DIMENSIONS Unit (mm)

Size	D	D1	D2	D3	L	L1	L2
3/4"	65.00	61.00	25.50	21.50	75.00	46.25	3.25
1"	65.00	61.00	30.80	26.80	75.00	35.95	3.25

Roof Type

# JOINT BOX

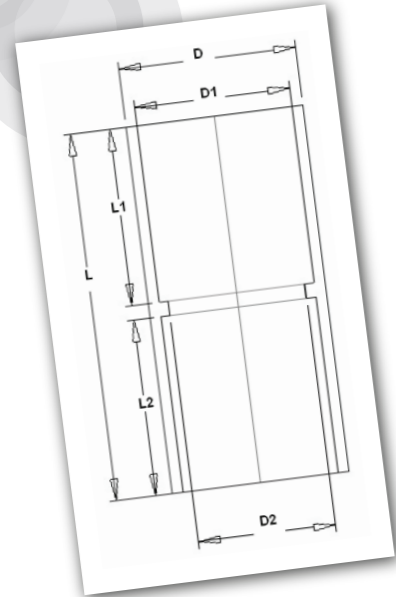


## DIMENSIONS Unit (mm)

Size	D	D1	D2	D3	L
3/4"	65.00	61.00	25.50	21.50	37.00
1"	65.00	61.00	30.80	26.8	37.00

Wall Type

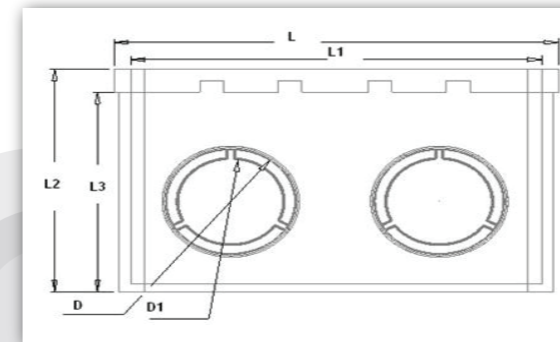
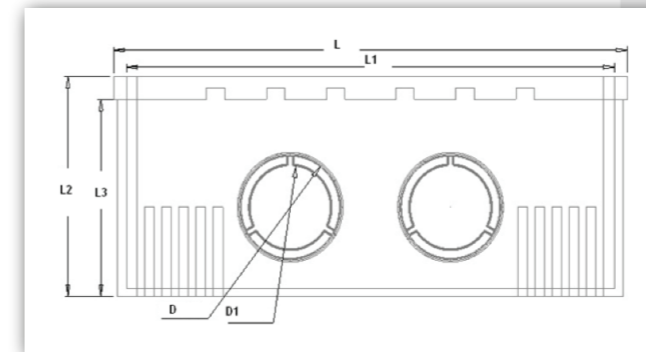
# SOCKET



## DIMENSIONS Unit (mm)

Size	D	D1	D2	L	L1	L2
1/2"	18.50	15.00	12.60	51.00	24.50	24.50
3/4"	25.00	21.50	18.90	51.00	24.50	24.50
1"	30.30	26.80	24.20	51.00	24.50	24.50
1 1/4"	37.10	33.60	30.30	76.20	37.10	37.10
1 1/2"	45.80	42.30	39.30	76.20	37.10	37.10
2"	63.90	60.40	57.40	76.20	37.10	37.10

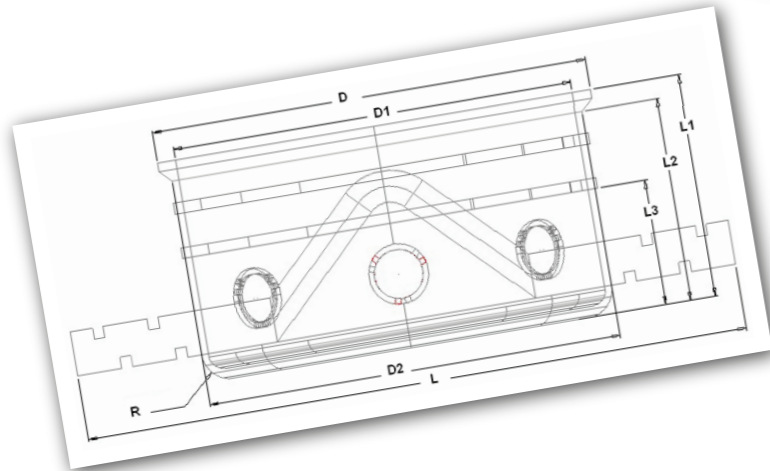
# SWITCH BOX



## DIMENSIONS Unit (mm)

Size	L	L1	L2	L3	D	D1
4"	87.00	81.00	58.80	52.00	27.00	22.00
6"	141.00	134.00	58.80	52.00	27.00	22.00

# FAN BOX



## DIMENSIONS Unit (mm)

Size	D	D1	D2	L	L1	L2	R	R
4"	157.00	144.00	149.00	239.00	80.00	73.00	45.00	10.00



We exist for our  
**clients**  
 while our human resource  
 is our prime asset

