

# LE **READY TO DEPLOY** Industrial IoT RTU

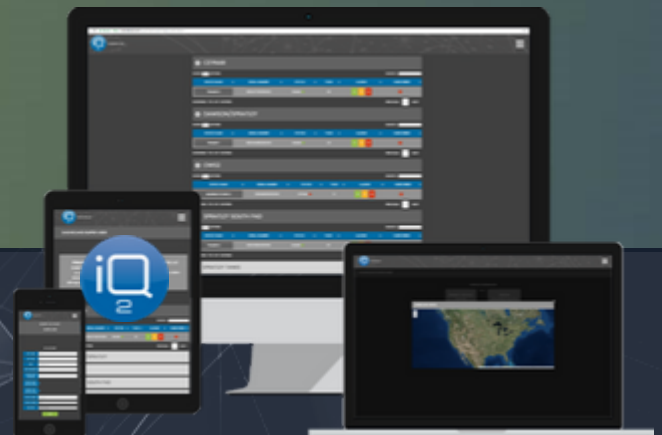
## Engineered for Dependability, Flexibility, Cost Effectiveness and Installation Simplicity

- iQ2 Platform Ready
- Rugged UL Certified Industrial Design
- Pilot-Ready
- Cellular-Enabled
- Battery Back-Up
- Expanded I/O
- Connect to Existing PLC, HMI, Digital and Analog I/O



## Use Cases

- Process Manufacturing
- Oil and Gas
- Water/Wastewater
- Remote Asset Monitor and Control



# TECHNICAL SPECIFICATIONS

## iQ2 Model # CGMINI-U-XX RTU

### DATA

- Alarm data: real-time
- Digital I/O data: real-time
- Analog I/O data: real-time/deadband
- Device health: real-time



### INPUT/OUTPUT

- I/O: 3 onboard configurable GPIO (12 VDC, 4-20 mA current loop or Form C, dry contact) relay outputs
- RS485/RS232: support for connectivity to external I/O devices and controllers
- CAN: 1 Canbus interface
- RJ45: two interfaces, support for Ethernet IP and Modbus TCP for connectivity to local networks or external I/O devices and controllers

### ELECTRICAL

- AC/DC power: supervised 120 VAC to 12 VDC, 60W, UL-recognized switching power supply
- Backup power: 12 V, 7 Ah battery standard, up to 18 hours
- Auxiliary: terminals for auxiliary power output (12 VDC) for battery-backed analog instrument loop powering

### OTHER

- Environment: operating temperature: -30°C to 70°C, non-condensing
- GPS: standalone GPS, assisted GPS, GPS OneExtra. Wideband GPS processing (20 MHz) for improved measurement accuracy, active passive GNSS (software selectable)
- Vented 12" x 10" x 6" NEMA 4X polycarbonate enclosure
- Cellular radio: connectivity provided via global deployment capabilities. Allows remote troubleshooting, management and support for the RTU and any networked devices within the local network, including PLCs, HMIs, Remote I/O and other devices
- Antenna: one direct-mount omnidirectional antenna (primary/diversity), SMA termination (standard), options for external high-gain directional and external high-gain omnidirectional antenna
- Data accessible to SCADA applications using Modbus TCP and Ethernet IP, requires LEC Data Center connectivity
- Service and support: OTA for communication and applications
- Warranty: 1 year manufacturing and material warranty