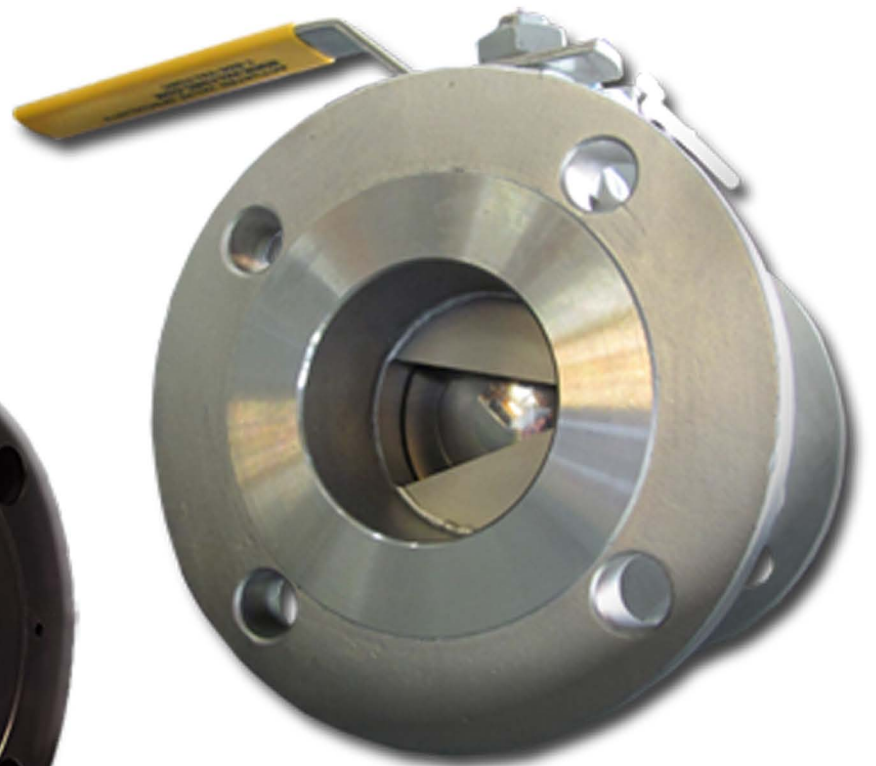


V-PORT / V-BALL VALVE SERIES



**30°, 60° & 90°
CONFIGURATIONS
AVAILABLE**

**V-PORT BALL VALVES AVAILABLE IN THE FOLLOWING MATERIALS:
STAINLESS STEEL, PVC, PVDF, BRASS AND CARBON STEEL**

WWW.VALTORC.COM | SALES@VALTORC.COM | 1-866-VALTORC | FAX: 770-499-7483

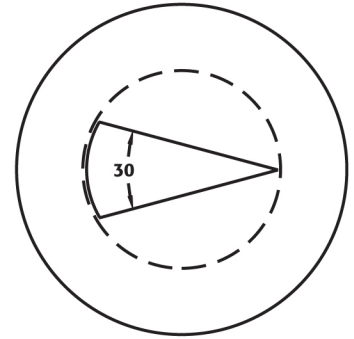
V-PORT BALL VALVE

VALTORC VP SERIES

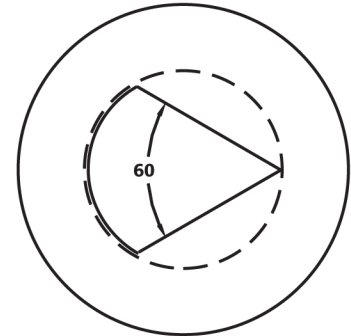
PRECISE FLOW WITH ULTIMATE CONTROL...

VALTORC VP SERIES V-PORT CV CHART

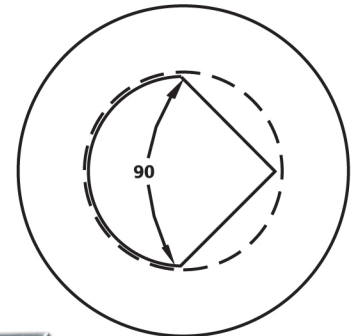
Valve Size	Ball Angle	0%	15%	20%	30%	40%	50%	60%	70%	80%	90%	100%
1/2"	30	0	0.1	0.1	0.2	0.3	0.5	0.8	1.1	1.6	2.2	2.6
	60	0	0.1	0.1	0.3	0.5	0.9	1.4	2	3.3	4.4	6
	90	0	0.1	0.2	0.4	0.6	0.9	1.5	2.2	3.8	5.4	6.9
3/4"	30	0	0.1	0.2	0.5	0.7	1.1	1.8	2.4	3.3	4.5	5.4
	60	0	0.1	0.2	0.7	1	1.7	2.8	4	6.5	9	12
	90	0	0.2	0.4	0.8	1.2	2	3.1	4.6	8	11.3	14
1"	30	0	0.1	0.3	0.8	1.3	2.3	3.5	5.1	9.8	8.5	10
	60	0	0.2	0.4	1.1	1.8	3.4	5.3	7.9	12.3	15.3	21
	90	0	0.2	0.6	1.8	3.4	5.1	8.1	11.4	16	21	29
1 1/4"	30	0	0.2	0.4	1.1	2	3.7	5.5	8	10	13	15
	60	0	0.2	0.6	1.8	3	5.5	9.5	12.8	19	26	39
	90	0	0.3	0.8	2	5	8	14	19	28	39	55
1 1/2"	30	0	0.3	0.6	1.6	3	5	7.5	11	14	17	20
	60	0	0.4	0.8	2.5	4	8	13	19	27	40	52
	90	0	0.4	0.9	3.5	7	13	20	31	42	63	78
2"	30	0	0.4	1	4	8	12	18	28	37	62	75
	60	0	0.4	1.5	4.6	9	16.5	27	39	55	83	110
	90	0	0.5	2	6	12	22	35	45	70	105	135
2 1/2"	30	0	0.4	1	4	8	12	18	28	37	62	75
	60	0	0.4	1.5	5	10	21	34	53	75	103	150
	90	0	0.5	1.7	7	14	28	48	70	106	160	218
3"	30	0	0.5	1.2	4	8	14	23	33	46	65	82
	60	0	0.5	2.5	6	14	25	40	65	91	128	165
	90	0	0.7	3.5	8	18	35	60	90	135	205	310
4"	30	0	0.6	2	6	15	29	48	71	100	130	159
	60	0	0.7	3	11	25	40	59	90	141	212	356
	90	0	1	3.5	16	40	75	125	190	295	442	670
6"	30	0	0.9	3.2	14	33	60	103	155	220	280	350
	60	0	2	5	22	60	110	190	285	416	586	800
	90	0	3	8	35	90	160	280	425	650	970	1480



30 V-Port



60 V-Port

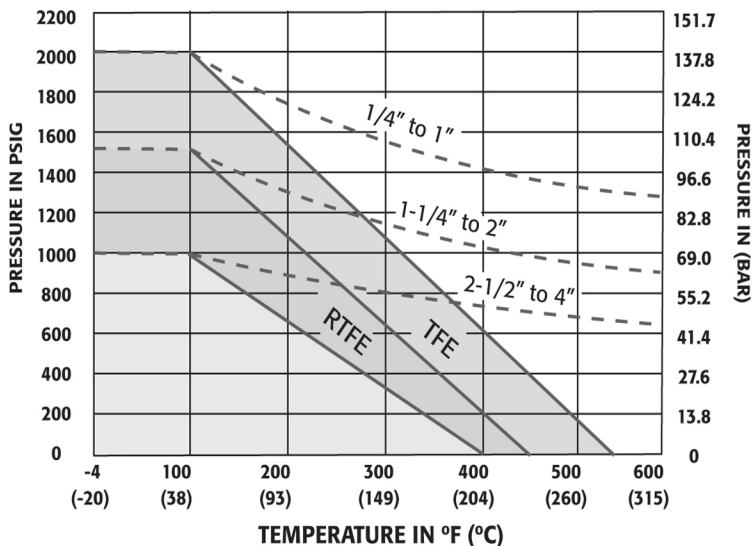


90 V-Port

*PLEASE CONTACT US AT **1-866-VALTORC** FOR VALVES IN ADDITIONAL SIZES

PRESSURE VS. TEMPERATURE CHARTS (1" - 6")

3-piece Design



3 PIECE V-PORT BALL VALVE

V-PORT BALL VALVE

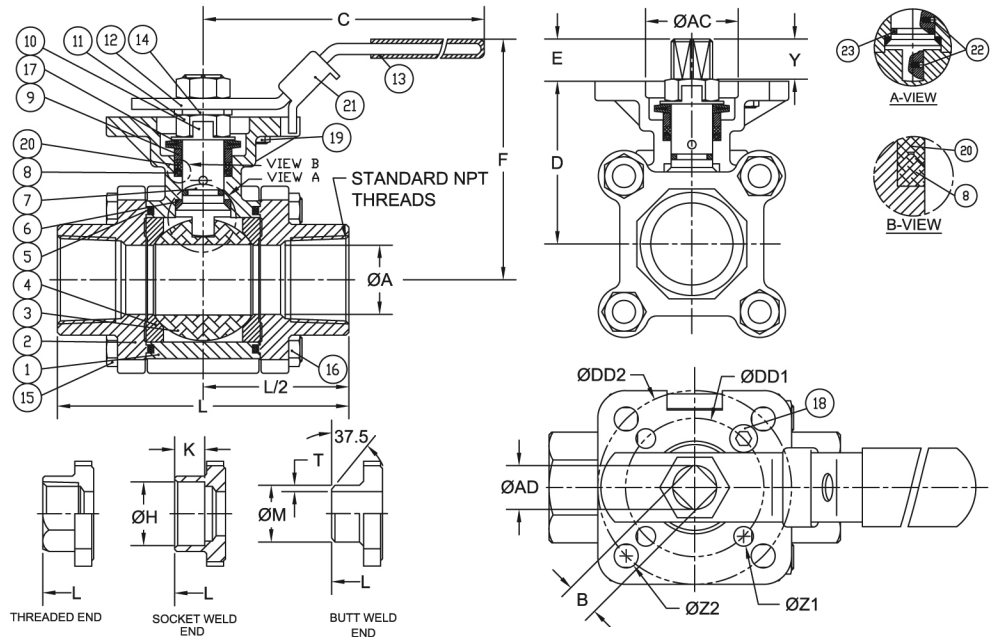
VALTORC VP SERIES

PRECISE FLOW WITH ULTIMATE CONTROL...

VALTORC VP SERIES V-PORT DIMENSIONS & DRAWINGS

The Valtorc VP Series Ball Valves are ideal for achieving maximum control with the simplicity and sealing features of a ball valve. We offer V-Port Valves 1/2" – 4" in a 3-piece design and 1/2" – 6" flanged. The standard "V" port options are 30, 60 & 90 degrees.

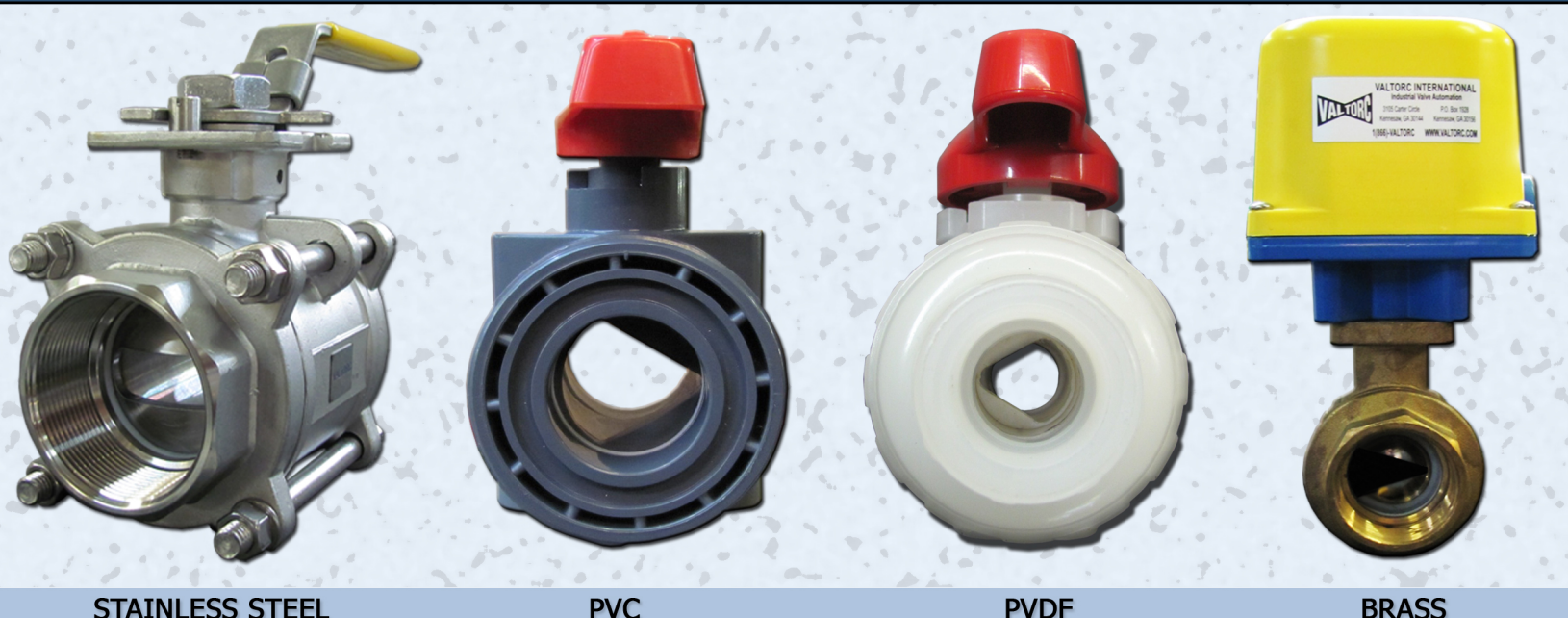
While they are available as manual valves, we specialize in automating them to suit your particular control requirements. Learn more at www.valtorc.com/v-port



DIMENSIONS (IN)

SIZE	ØA	B	C	D	E	F	H	K	L	M	T	Y	AC	AD	DD1	DD2	ØZ2	ØZ1	(LBS)	ISO5211
1/2"	0.59	0.354	5.47	1.66	0.25	3.00	0.85	0.39	2.85	0.85	0.06	0.25	1.07	0.44	1.654	1.969	0.28	0.28	2.0	F04/F05
3/4"	0.79	0.354	5.47	1.83	0.33	3.20	1.07	0.51	3.36	1.07	0.06	0.33	1.07	0.44	1.969	2.756	0.34	0.28	3.0	F05/F07
1"	0.98	0.433	6.50	2.31	0.41	3.86	1.34	0.51	4.15	1.34	0.06	0.41	1.34	0.56	1.969	2.756	0.34	0.28	4.5	F05/F07
1-1/4"	1.26	0.433	6.50	2.46	0.41	4.00	1.69	0.51	4.37	1.68	0.06	0.41	1.34	0.56	1.969	2.756	0.34	0.28	6.0	F05/F07
1-1/2"	1.50	0.551	8.46	3.11	0.53	5.04	1.92	0.51	5.01	1.91	0.06	0.53	1.54	0.74	1.969	2.756	0.34	0.28	10.0	F05/F07
2"	1.97	0.551	8.46	3.42	0.53	5.35	2.40	0.63	5.62	2.38	0.06	0.53	1.54	0.74	1.969	2.756	0.35	0.30	13.0	F05/F07
2-1/2"	2.56	0.748	10.31	4.28	0.66	6.60	2.89	0.63	7.28	3.00	N/A	0.66	2.09	0.94	2.756	4.016	0.47	0.39	26.0	F07/F10
3"	3.15	0.748	10.31	4.63	0.70	6.96	3.54	0.63	8.07	3.54	N/A	0.70	2.09	0.94	2.756	4.016	0.47	0.39	34.0	F07/F10
4"	3.94	0.748	12.28	5.26	0.66	7.59	4.54	0.79	9.45	4.57	N/A	0.66	2.09	0.94	2.756	4.016	0.47	0.39	52.0	F07/F10

STAINLESS STEEL, PVC, PVDF, BRASS & CARBON STEEL V-PORT VALVES
 WITH VARIOUS MATERIALS AND SIZES YOU CAN GET THE EXACT CONFIGURATION YOU NEED!



STAINLESS STEEL

PVC

PVDF

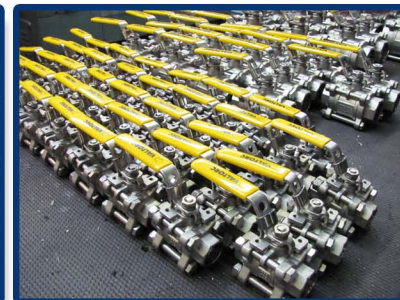
BRASS

VALTORC® ALSO OFFERS:

- FULL PORT BRASS BALL VALVES
- 3-WAY BRASS BALL VALVES
- FULL PORT STAINLESS BALL VALVES
- 3-PC STAINLESS STEEL BALL VALVES
- SS SANITARY TRI-CLAMP BALL VALVES
- STAINLESS STEEL FLANGED VALVES
- PVC/CPVC BALL VALVES
- 3-WAY PVC BALL VALVES
- BUTTERFLY VALVES, WAFER & LUG STYLE
- TRIPLE OFFSET BUTTERFLY VALVES
- PNEUMATIC ACTUATORS
- ELECTRIC ACTUATORS
- LIMIT SWITCHES
- VALVE POSITIONERS
- GEAR OVERRIDES
- LOCKOUTS
- PILOT VALVES
- MOUNTING KITS
- I/P TRANSDUCERS
- POULTRY SCALDER PANEL
- SOLENOID VALVES
- INDUSTRIAL VALVES
- BALL VALVES
- BUTTERFLY VALVES
- KNIFE GATE VALVES
- PLUG VALVES
- SANITARY VALVES
- SAFETY RELIEF
- PVC VALVES
- V-PORT BALL VALVES

WHY CHOOSE VALTORC® V-PORT BALL VALVES?

- **Simplicity - Very Low Maintenance Costs**
- **Tight Shutoff - Exceeding Class VI and Bubble-Tight**
- **High Rangeability - Repeatable Control Through 95% Travel**
- **Low Weight - About 30% Lighter Than Globe Control Valve**
- **Low Flow Control - Cv As Low As 0.07**
- **High Temperature - Up to 1,000°F**
- **Higher Pressure Rating - 1000PSI and Higher**



Valtorc® International is a major supplier in the industrial control and actuated valves market worldwide supplying ARRA compliant valves and many more products since 1980. We have a broad product line of standard control devices to meet even the most demanding customer requirements. Contact us today to learn more!

VALTORC
INTERNATIONAL

P.O. BOX 1928
KENNESAW, GA 30156

3105 CARTER CIRCLE
KENNESAW, GA 30144

CONTACT US TODAY!

Toll Free: **1-866-VALTORC**
Local: **770-423-7100**
Fax: **770-499-7483**

ORDER ONLINE @
WWW.VALTORC.COM
SALES@VALTORC.COM

