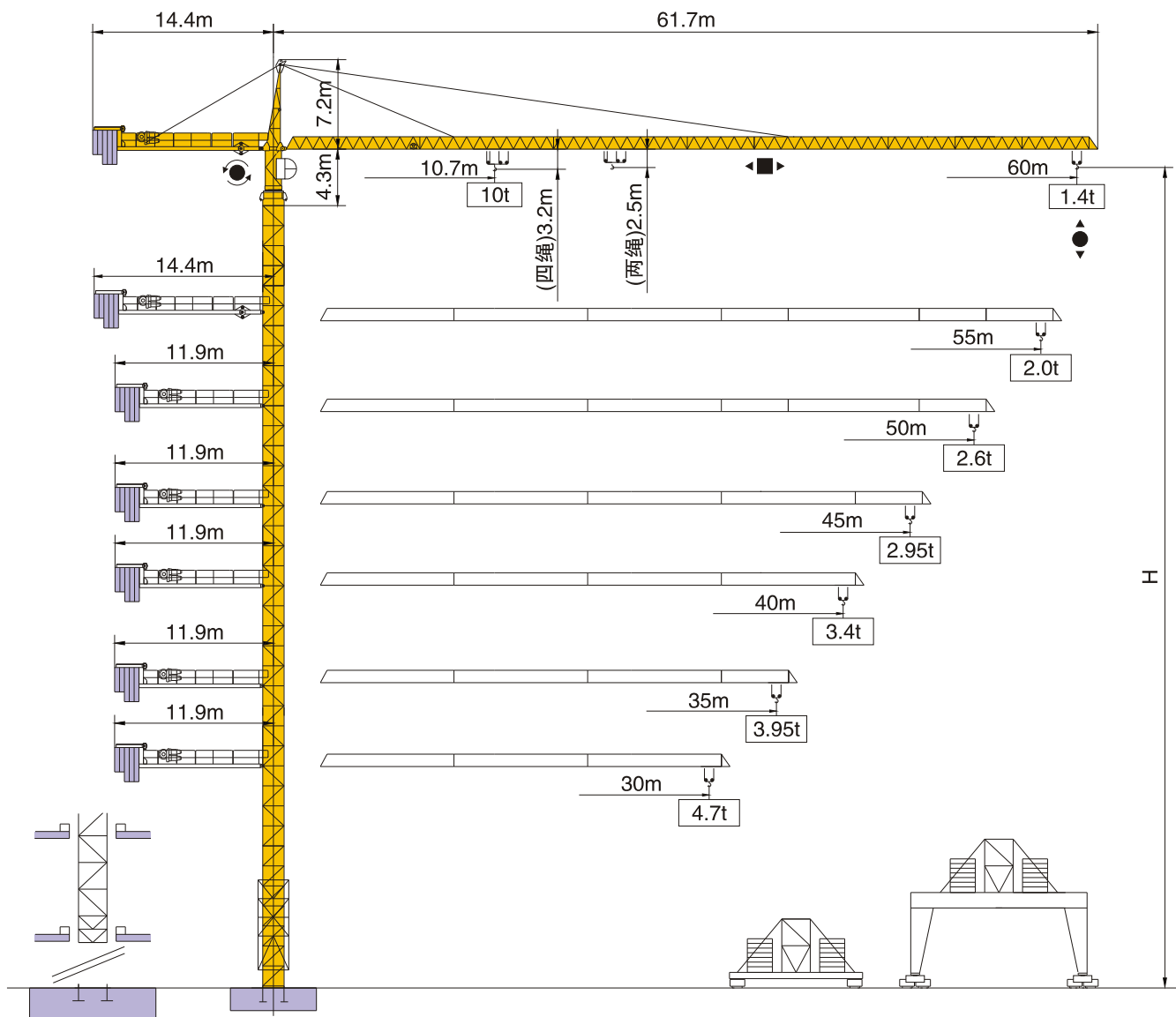




三洋重工
SANYO HEAVY INDUSTRY GROUP

TOWER CRANE S140 H10

(H25/14)



通过ISO9001国际质量体系认证



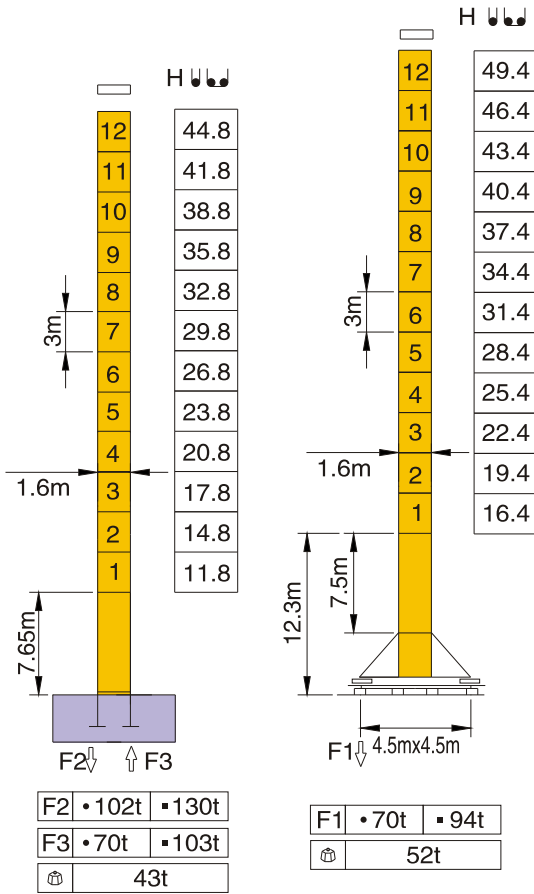
中国 沈阳三洋建筑机械有限公司

SHENYANG SANYO BUILDING MACHINERY CO., LTD. CHINA

塔身截面 Mast:1.6mx1.6m

PA452

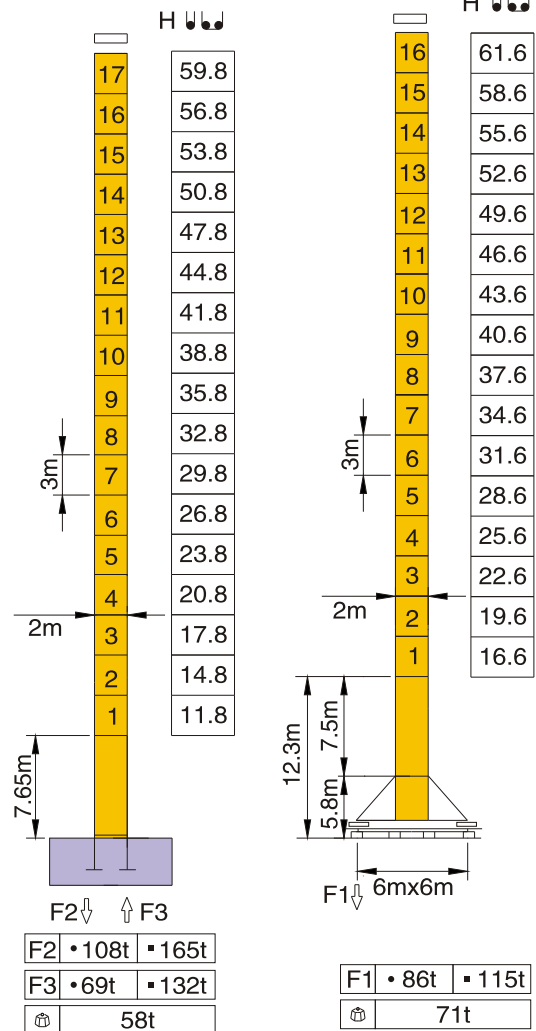
SA452



塔身截面 Mast:2mx2m

PA664

VA650



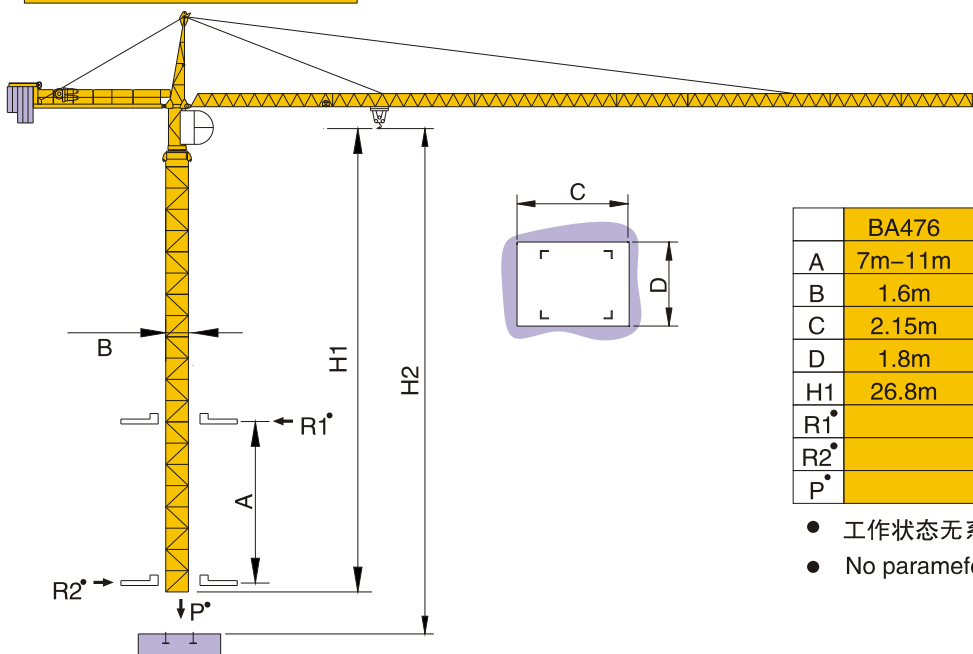
F 反力 Reactions

- 工作状态 In service
- 非工作状态 Out of service

自重 Self-load

不带载荷及配重, 最大臂长及标准高度时的自重。 Without load and counter-weight with longest jib and standard height.

内爬塔机 Climbing crane

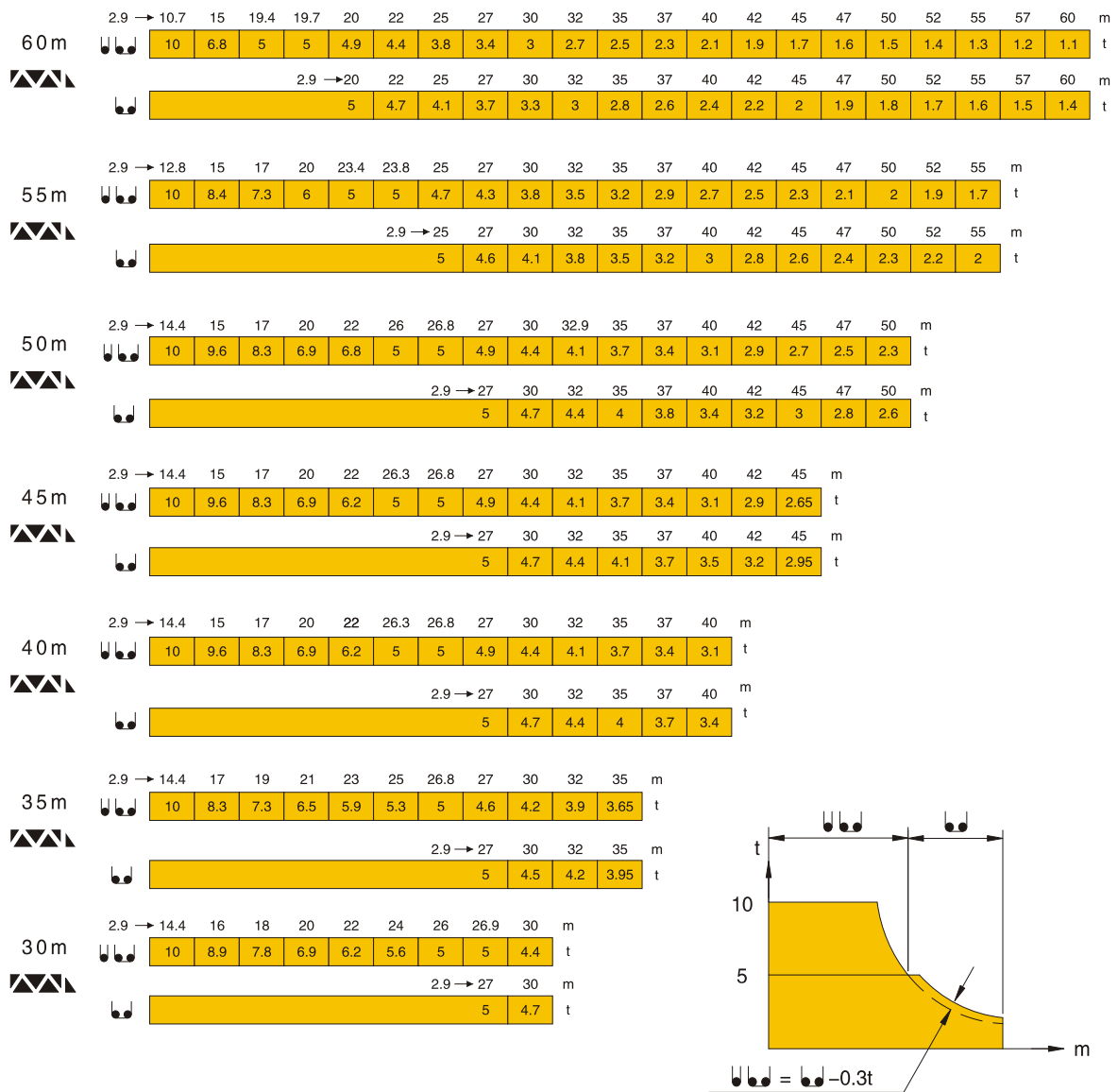


H2	
70RCS25	
⌚	⌚⌚
243m	121m






	BA476	BA479	BA675
A	7m-11m	12m-19m	16m-21m
B	1.6m	1.6m	2m
C	2.15m	2.31m	2.58m
D	1.8m	1.77m	2.17m
H1	26.8m	43.3m	53.6m
R1			
R2			
P			



- 工作状态无系数
- No parameter in working service

载荷特性 Load Diagrams



塔机配重表 Counter-weight

	 L=11.9m	 L=14.4m
		
60m		15.5t
55m		14.8t
50m	16.1t	
45m	14.8t	
40m	13.6t	
35m	10.5t	
30m	9.3t	

机构特性 Mechanisms specification											kW	
起升 Hoisting		45LVF 25	m/min	0-34	0-64	0-94	0-17	0-32	0-47	500	45	
			t	5	2.5	1.25	10	5	2.5			
	70RCS 25	m/min	0-40		0-80	0-20		0-40		486	51.5	选择型 Optional winch
		t	5		2.5	10		5				
	75LVF 25	m/min	0-74	0-136	0-200	0-37	0-68	0-100		600* >600	75	选择型 Optional winch
		t	5	2.5	1.25	10	5	2.5				
变幅 Trolleying		4TVF	m/min	0-55						4		
回转 Slewing		95SVT	r/min	0-0.7						95Nm × 2		
行走 Travelling		4TRVF	m/min	0-30						4 × 4		
 电源 Power Supply				380v 50Hz / 440v 60Hz								
KVA 供电容量 Necessary Electric Power				45LVF:75KVA								
采用其它形式起升机构 Other Form Hoisting				75LVF:105KVA 70RCS:80KVA								

※ 在这种情况下要同制造商协商 Consult us

各种参数以修改为准 subject to modification

执行标准 Voluntary Standards: GB/T 13752


中国 沈阳三洋建筑机械有限公司
 SHENYANG SANYO BUILDING MACHINERY CO., LTD. CHINA

厂址: 中国 沈阳市大东区东北大马路272号 邮政编码: 110044

电话: 024-88093933 88091979 (销售公司) 024-88902637 (海外销售部) 024-88091828 (售后服务)

传真: 024-88093057

网址: www.sys-china.cn 中文网络实名(3721): 塔吊、塔式起重机、沈阳三洋重工

公司邮箱: SYS@sys-china.cn

海外销售部邮箱: overseas@sys-china.cn

售后服务部: service@sys-china.cn

任何非以@sys-china.cn 结尾的邮件均不代表沈阳三洋建筑机械有限公司的行为。

ADD:NO.272 Dongbei Damalu.Dadong District,Shenyang CHINA Postcode:110044

Tel: 86-24-88093933 88091979 (Sales Dept) 86-24-88902637 (Overseas Sales Department) 86-24-88091828(After Service)

Fax:86-24-88093057

Http:www.sys-china.cn

Company E-mail: SYS@sys-china.cn

Overseas Sales Department: overseas@sys-china.cn

After service: service@sys-china.cn

Any e-mail that doesn't interminate in "@sys-china.cn" is not Shenyang SANYO Building Machinery Co., Ltd. Performance.