

Detail is subject to SE approval

Detail Issued For Guidance Only,
Designer's Approval Required

Site construction sequencing should be assessed before the appropriate Visqueen Standard Detail is selected & approved by the Designer

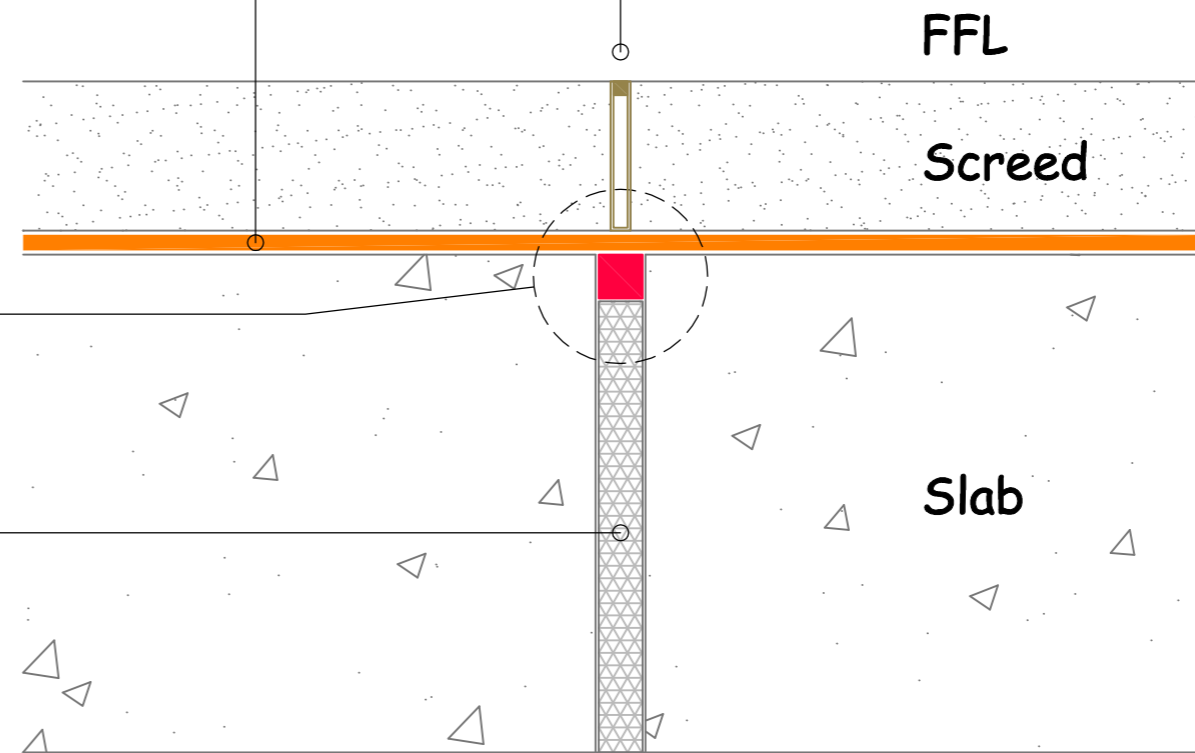
Control joint in screed
by others

Visqueen Axiom Shield LAC
(2 coats) on smooth float finish
concrete

Visqueen Axiom CreteSeal
concrete joint sealant

Expansion joint filler
by others

NB; A sacrificial DPM may be
required - seek advice from
engineer



TYPICAL CONSTRUCTION JOINT DETAIL - GROUND BEARING SLAB

NB ; DO NOT SCALE - USE FIGURED DIMENSIONS ONLY.



Visqueen
Contact Technical Support :
t : 0333 202 6800
f : 0333 202 6886
e : enquiries@visqueen.com
www.visqueen.com

Project: Standard Detail : Visqueen Axiom Liquid Membranes.

© COPYRIGHT
RESERVED.

AX-31 A	Ground Bearing Slab	Axiom Shield LAC	Axiom CreteSeal	Liquid Membrane
---------	---------------------	------------------	-----------------	-----------------

In order to develop a robust design for protecting a structure against groundwater, a risk assessment must be carried out in line with the guidance given in BS8102:2009

The designer may need to specify one or a combination of waterproofing measures