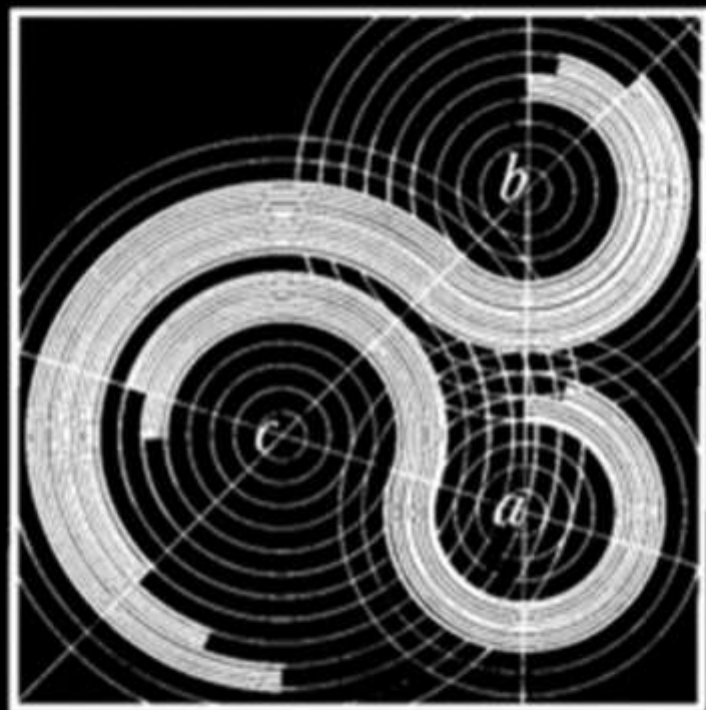
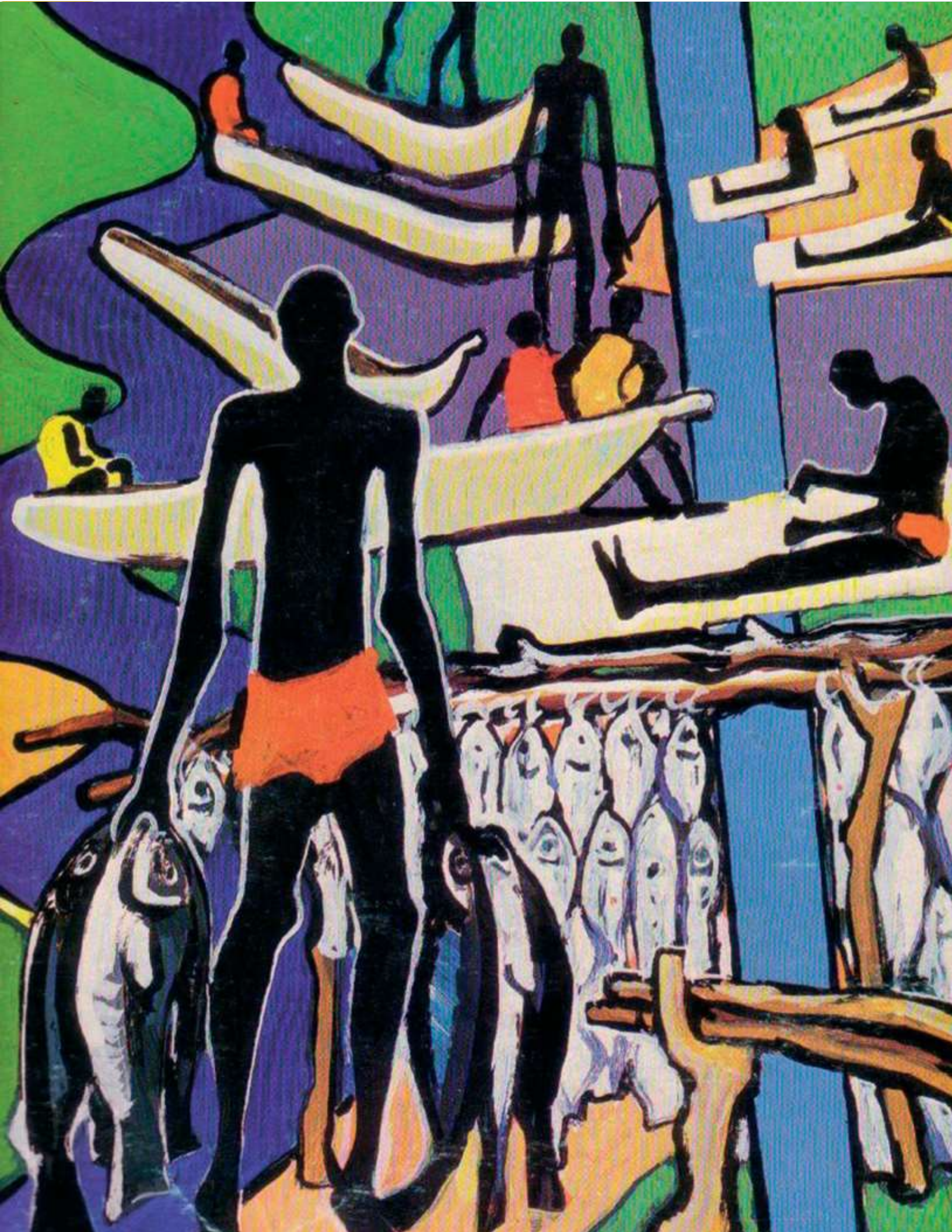


MEFIT



SOLUTIONS PROVIDER

○ Khartoum ○ Rome ○ Houston ○ London



About MEFIT

MEFIT is involved in a wide range of activities, such as; regional/urban planning, complete design of commercial/industrial centers, new city planning, and energy projects. MEFIT's experience and expertise in consulting, engineering and project/program management allows an original overall approach to project development.

MEFIT's wide network of Specialists provides the expertise required to carry out Analysis, Feasibility Studies; Planning; Budgeting, Engineering and Designing, Tendering and Program/Project management.

There is an outstanding difference between the traditional consultancy approach and the philosophy adopted by MEFIT. The difference is immediately identifiable by the great importance MEFIT attaches to the local cultural aspects of the work at hand.

Due to its modern organization, MEFIT can provide answers to satisfy the most complex demands of the clients. Many clients can testify to the magnitude and quality of MEFIT's work.

MEFIT is implementation

from the first idea, a simple line or colour hypothesis, to the completion of the smallest sophisticated detail, fit-for-purpose solutions produce an entire package from comprehensive design to implementation.

MEFIT is dynamic

it aims at the realization of potential from a creative, energetic, and youthful staff, supported by experienced and skilful managers who represent the driving force of the company.

MEFIT is agile

know-how and organization bring the most compatible partnerships for any requirement. These qualities insure the commitment and the fulfillment of the project's objectives.

info@mefitltd.com

www.mefitltd.com

○ **Khartoum** ○ **Rome** ○ **Houston** ○ **London**

About MEFIT

Markets

• Planning

- Regional Planning
- Town Planning and Urban Design
- Urban Renewal
- Roads and Traffic

• Building

- Public Buildings
- Commercial Buildings
- Airport
- Light Industry

• Energy

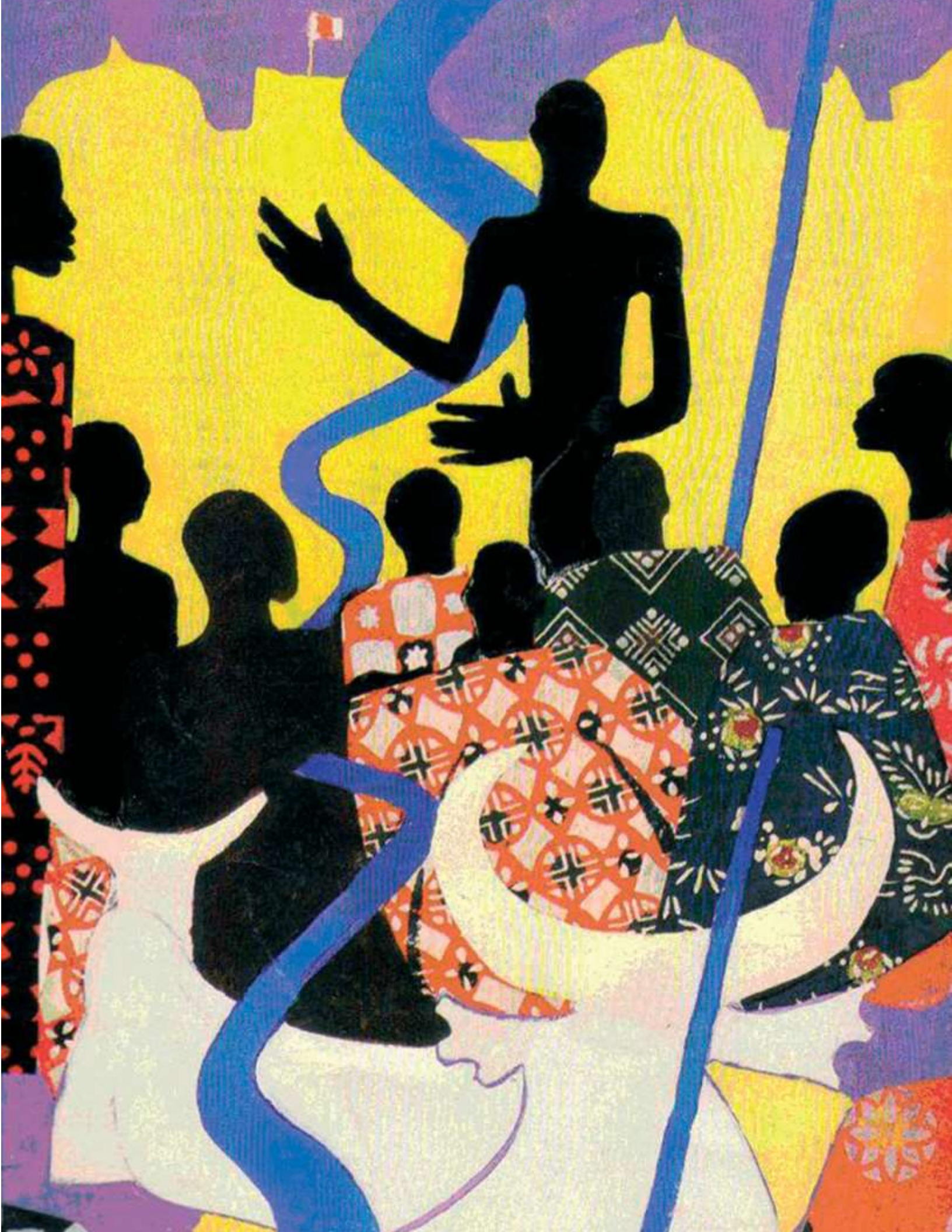
- Solar Power
- Biofuels
- Fuel Cells
- Micro-grids
- Oil & Gas

Solutions

- Concept Development
- Feasibility Study
- Planning
- Cost Estimation
- Engineering & Design
- Supply Chain
- Program/Project Management

Projects

- Town and Urban Planning
- Government Buildings
- Commercial Facilities
- Regional Plan and Urban Master Plan
- Light Industry
- Solar Power Plants



Market—Planning

Regional Planning

Large scale planning of agricultural schemes and industrial development plans are complex and require interdisciplinary approaches.

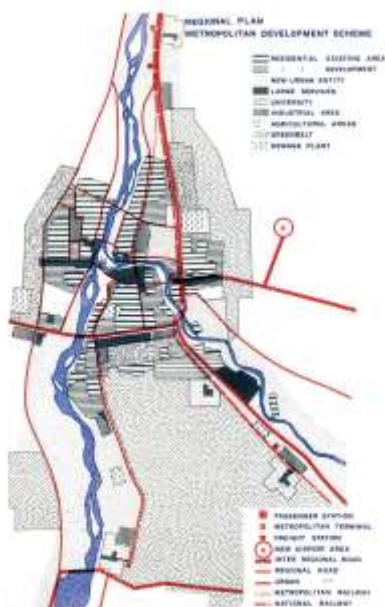
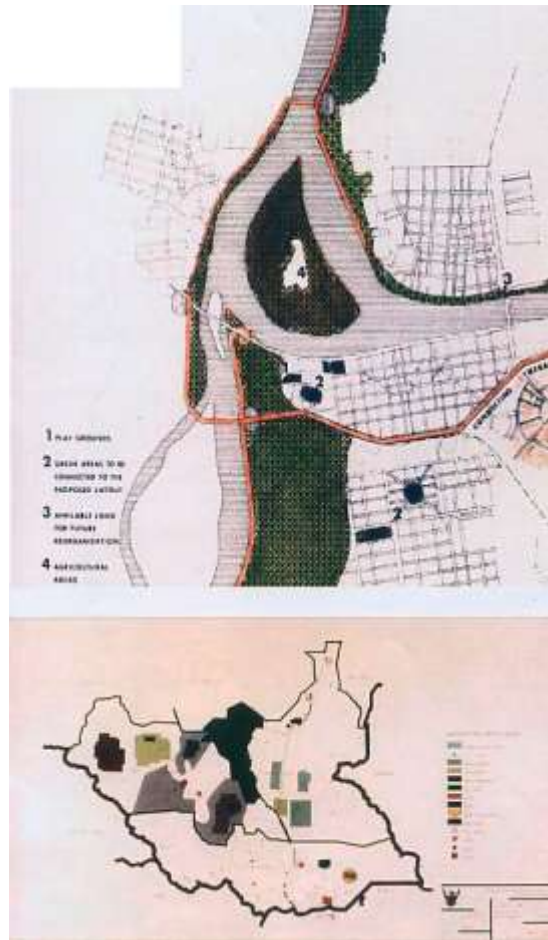
MEFIT imposes firm creative principles, provides highly qualified consultants, uses modern analytical techniques, adopts overall cost- benefit methods and superior management control.

Town Planning and Urban Design

MEFIT generates new patterns for a city while respecting the local habits and being culturally sensitive.

The idea of a space fit to live in requires a different approach to the essential qualities of life for each new community.

Through the use of public buildings as poles of attraction, by means of the variety in aggregation of modular units, through establishing correct hierarchy of mobility patterns, both in the environment requiring fresh appraisals, MEFIT contributes to the quality of city life.



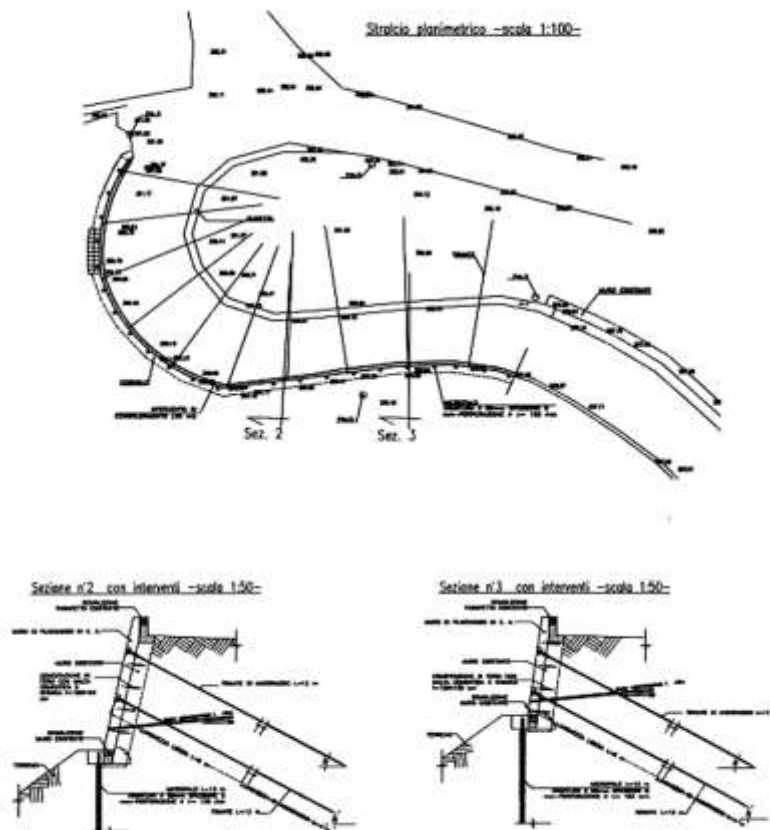
Urban Renewal

Renewal means upheaval, disturbance and the breakdown of traditional values. It needs to be handled sympathetically. MEFIT uses methods and means that increase the quality of life and the living standards by studying and truly understanding traditional values. MEFIT formulates strategies that identify sectors of intervention, plans social policies, controls existing environments and defines sets of regulations aimed at achieving an overall coherent urban atmosphere.

Market—Planning

Roads and Traffic

Increased mobility means congestion, noise and air pollution in the city. These types of traffic conditions generate demands for new space, but also damage the urban pattern and quality of life. MEFIT's goals are to engineer the technological skills necessary for the restoration of the urban image and the maintenance of that image in the future through the application of a master plan of the roads. Creating a master plan entails carrying out wide-ranging traffic research, origin-destination analysis, building computerised simulation models and balanced road programming.





Market—Buildings

Public Buildings

The MEFIT design team principals have acquired considerable experience in the completion of public buildings. These buildings have elements of being attraction-generating poles in the urban area as well as representative units, which required the integration of functional and psychological values during their development. MEFIT has also specialised in the design of libraries, cultural facilities and public hospitals.



Commercial Buildings

MEFIT's approach to commercial buildings is one where beautiful architectural solutions need to combine with the most appropriate technology, economy of investment and operations, as well as integrating local culture and customs.

MEFIT can support a commercial investment for either a new facility or the development of an existing one from its inception to the full realization.

MEFIT's wide range of expertise in designing hotels, conference centers, shopping centers, housing developments, educational complexes and health care facilities provides investors with the support required to make the correct decisions through MEFIT's complete line of services.

Market— Buildings

Airport

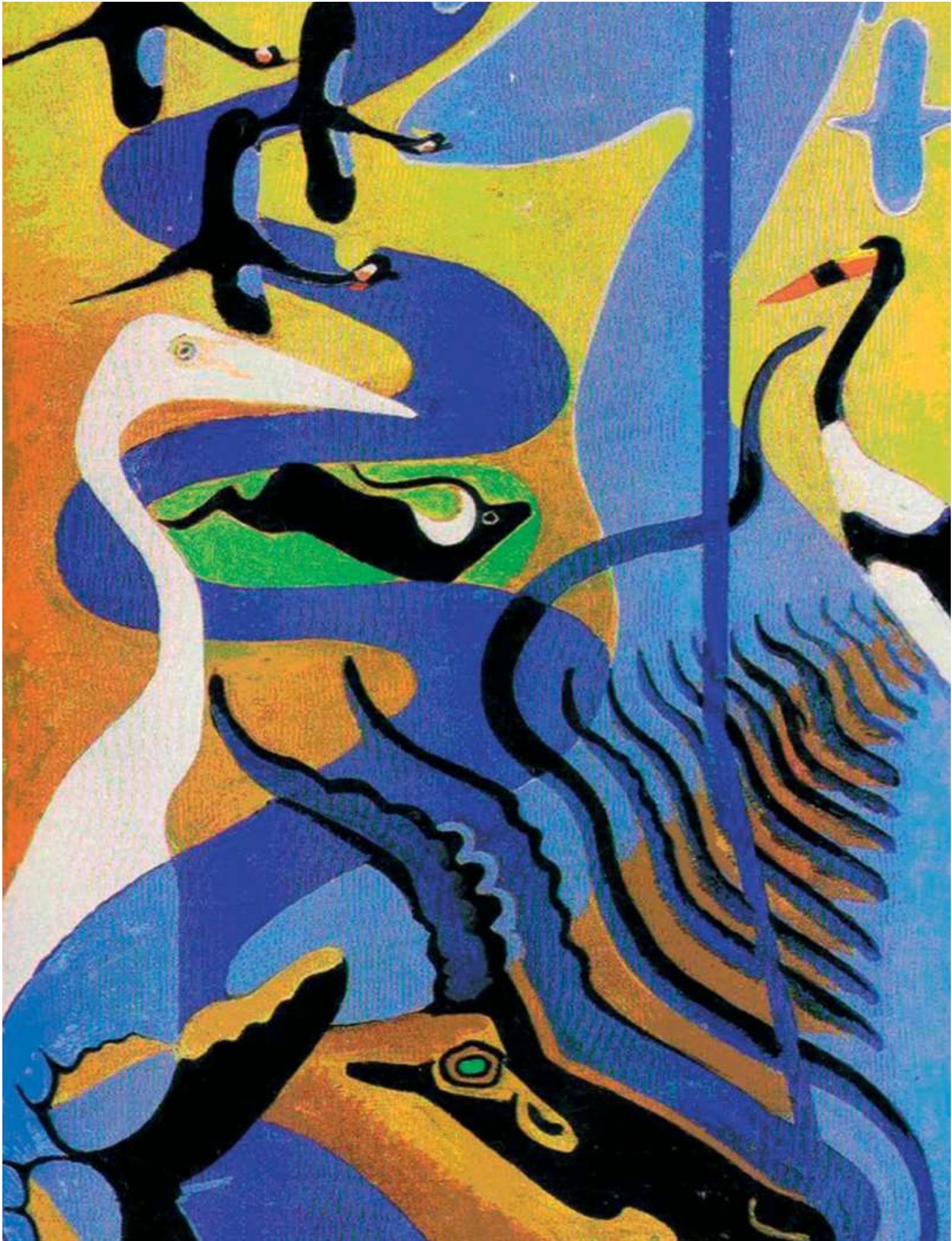
MEFIT's approach is to design modern airports using sophisticated technology to produce an efficient general layout and flexible shape to optimise traffic movement and to use advanced equipment, including intelligent buildings and IoT, in order to comply with the world-wide policy of increasing and specialising air-traffic.



Light Industries

MEFIT is in the unique position to provide technology solutions from all over the world appropriate for the particular local conditions. Specific know-how includes manufacturing, material handling and processing.





Market—Energy

Solar Power

Solar power is a cost effective, simple to install and easy to maintain power solution with functional rural applications.

MEFIT provides solar power solutions addressing energy requirements in rural and remote areas, meeting agricultural, health care and housing needs.

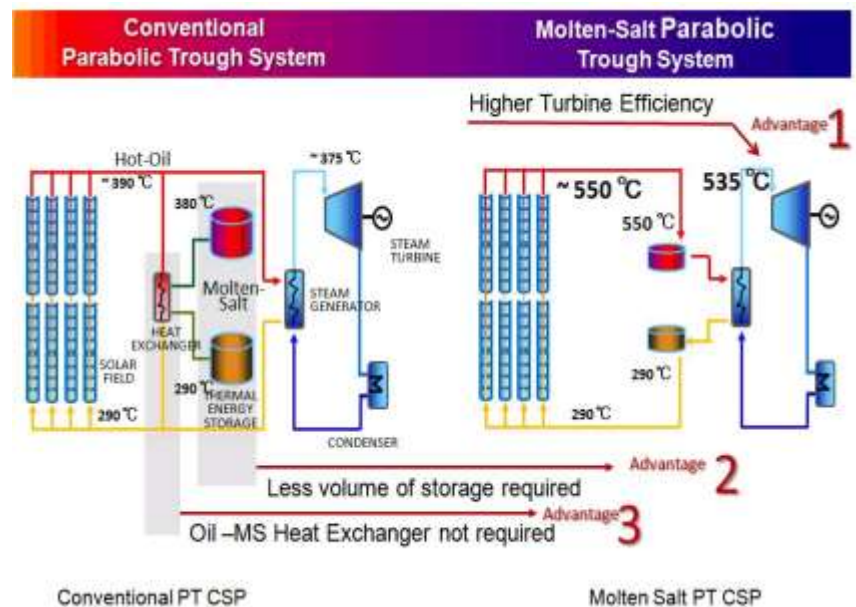
Photovoltaic Solar Power is the most widely used and effective entry into solar power:

- Cost Effective
- Simple to install
- Automated operation
- Distributed Generation
- Modular
- Sun tracking
- Hybrid solutions
- Remote Monitoring
- Storage options



Concentrated Solar Power (CSP) combines the heating power of solar energy with the proven steam power generation:

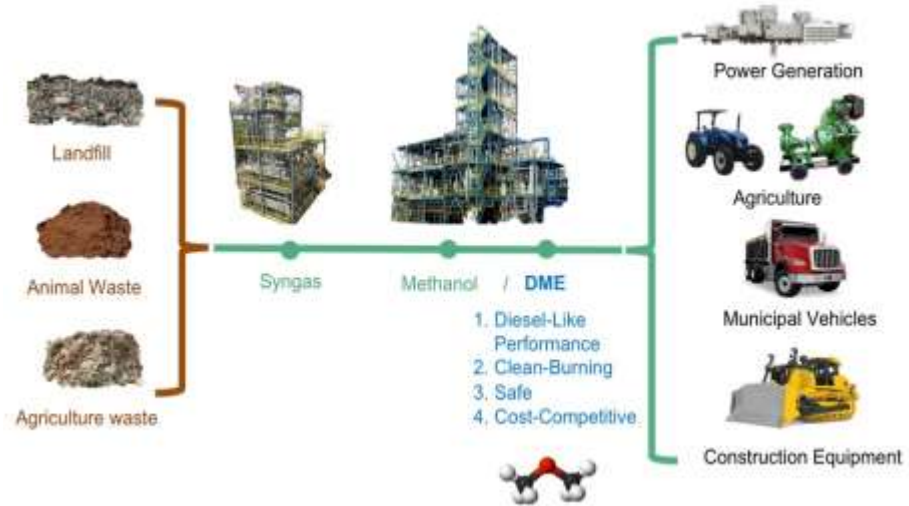
- Optimized solar panel configuration
- Reliable Steam power generation
- With or Without storage
- Optimize Heating/storage medium
- Automated Operation
- Modular
- Sun tracking
- Hybrid solutions
- Remote Monitoring



Market—Energy

Biofuels

Agricultural and urban areas provide abundant raw materials that can be converted, economically, into bio-fuels. Waste from farming or animal rearing is ideal material for producing bio-fuels. MEFIT can develop power solutions; source new and/or used equipment and project manage the whole development.



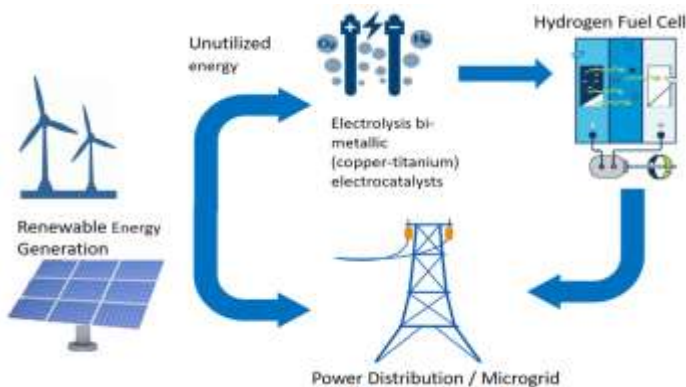
Waste products can easily be converted to Dimethyl Ether (DME), which is a clean-burning, non-toxic, high-cetane value (55-60) fueling system that combusts quietly and is an inexpensive alternative to diesel. It can be stored as a liquid under moderate pressure using simple and inexpensive infrastructure.

Implementing minor temperature and pressure adjustments, in the same process, can produce Methanol. Methanol can be used as an engine fuel or in methanol fuel cells.

Fuel Cells

Fuel Cells are a proven method to provide energy. Fuel cells can be used to charge batteries or feed local grids. Most common fuel cells are hydrogen but methanol fuel cells are a valid alternative.

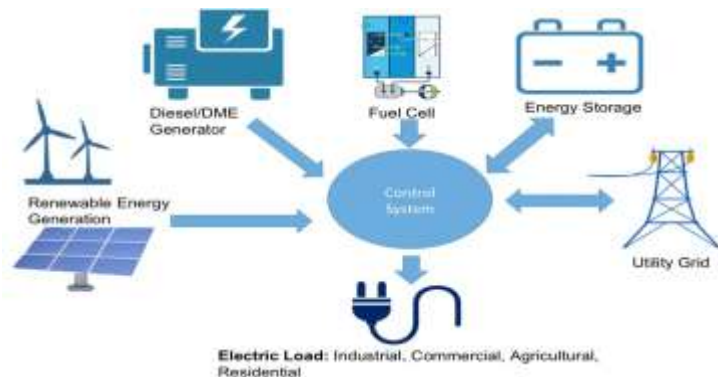
MEFIT can develop systems that combine solar power and fuel cells for an effective and economic energy solution.



Micro-grids

Hybrid systems combining solar and other power generation methods in a micro-grid can further enhance flexibility and range of operations.

A micro-grid is a small-scale power grid that can operate independently or in conjunction with the area's main electrical grid.



Market—Energy

MEFIT brings together different energy sources and combines them with load management systems to provide flexibility and reliability.

Oil & Gas

Oil and gas project require a new approach especially in countries just developing their oil and gas sector. Shale has changed the industry reduced margins and increased competition among oil and gas producing countries. New or smaller producers have to look at new ways to participate in the market. Lower cost of production is key to success.

MEFIT provides the solution:

- Lean organization with just-on-time resources
- World leading experts
- Cost effective execution.
- Standard design fit for purpose
- Supply chain and construction input part of the design
- Client centric



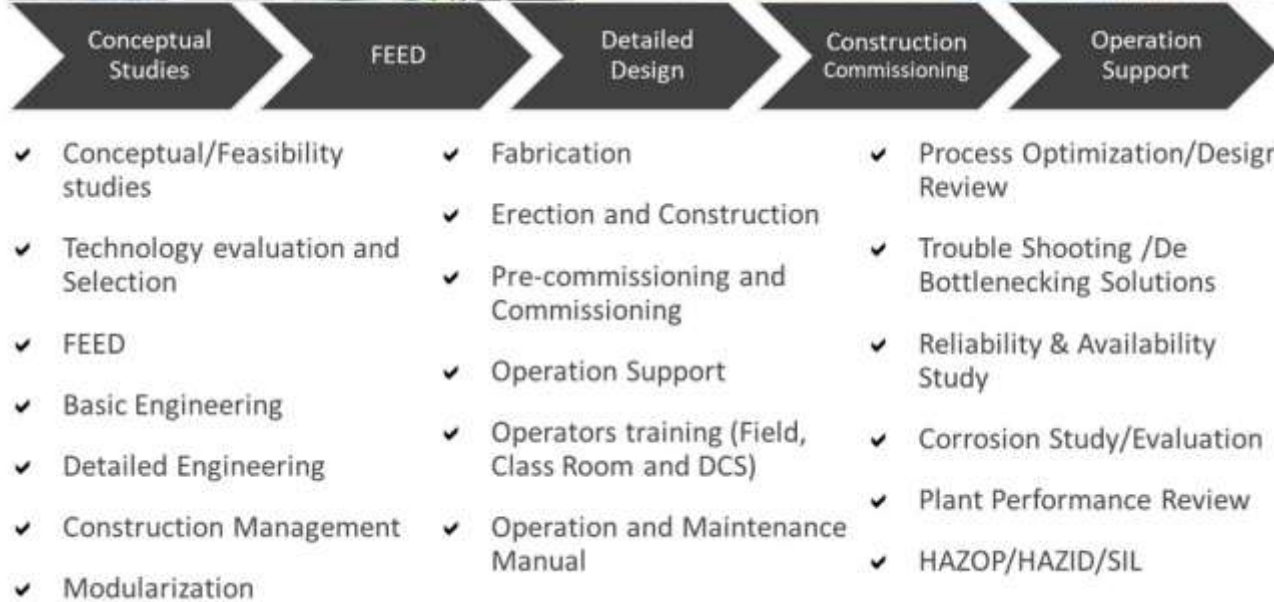
From the well head to the doors of the refinery or chemical plant, MEFIT has expertise in oil and gas facilities:

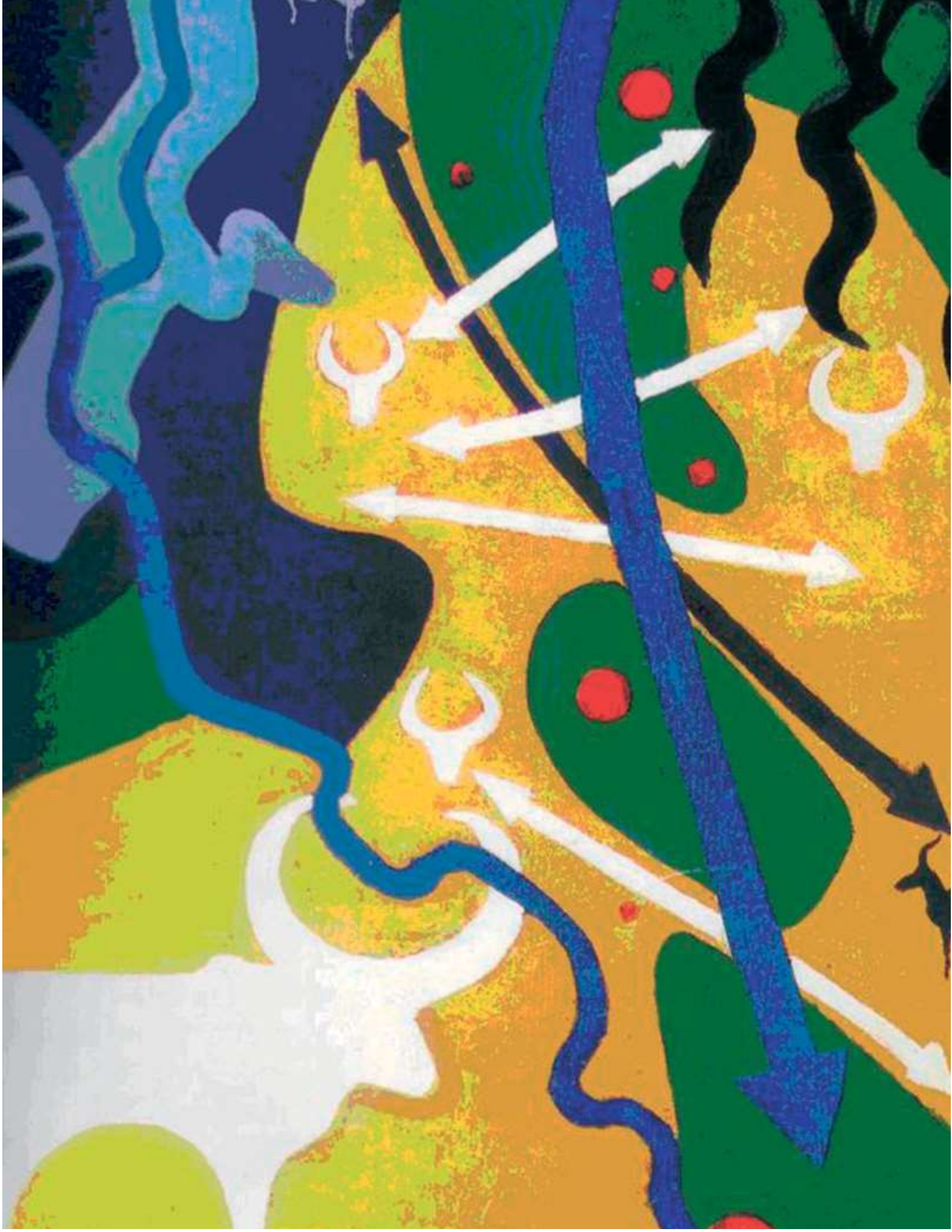
- Well site facilities & gathering systems
- Separation (oil, gas, water)
- Gas processing & liquids
- Flare and emergency systems
- Enhanced oil recovery (EOR)
- Pipelines, terminal facilities, gathering systems
- Water & water management
- Infrastructure, power, and utilities



Market—Energy

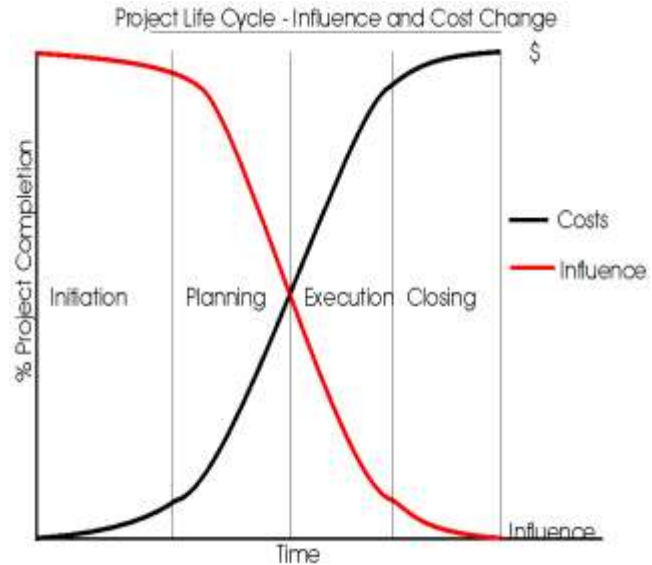
MEFIT provides the following services to the Oil & Gas Projects





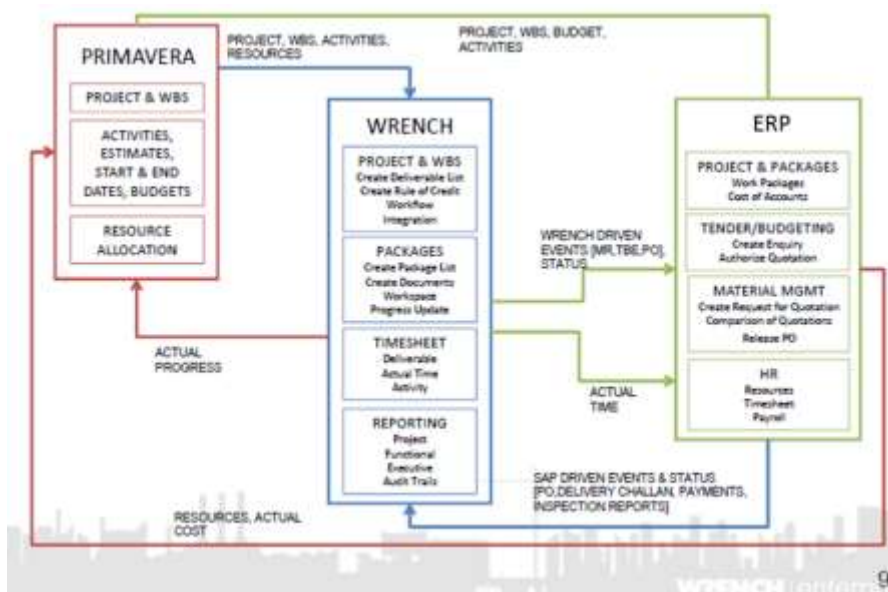
MEFIT understands the importance of project planning and management at all stages of a project:

1. A significant portion of project cost results from rework
2. Risk Management is not resulting in a comprehensive process for managing key risks
3. Lack of delivery effectiveness is constraining investors effectiveness
4. Majority of projects are over-budget, late and experience defects post-completion
5. Insufficient assurance in pre-investment planning and estimation has been identified as the single most important factor affecting the ability to deliver to investment schedule.



Any project requires disciplined planning, execution, performance management, and communication. Each project is unique and has different challenges, but a well-established set of tools (systems and approaches) can be implemented to de-risk overall delivery and optimize cost/schedule

MEFIT adopts Integrated Program using Integrated Project Management System Tools and Systems.



“Project, product & change management disciplines contribute to the project success but only integrating all three increases the likelihood of project success.” - PMI

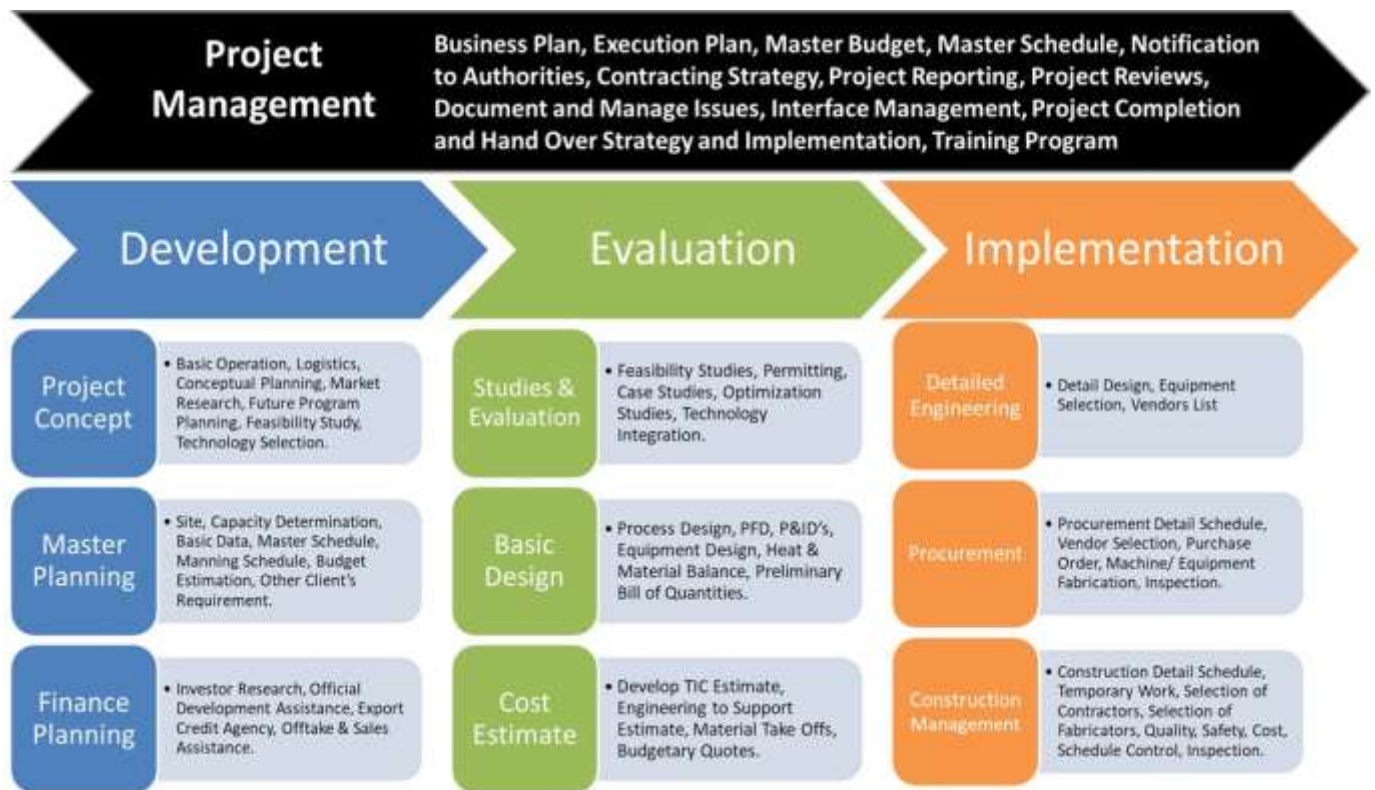
Solutions

MEFIT provides consulting and engineering services to a wide base of clients. Our engineers' experience covers the entire requirements for planning, building and energy projects.

MEFIT is the ideal partner for an owner to insure the correct resources, tools, and approaches are in place to ensure successful execution of any project.

MEFIT services range from the initial design to the full implementation, covering all steps of the process along the way.

MEFIT can provide a complete array of solutions from a project inception to the complete implementation in a cost effective manner by proper planning and execution follow up as highlighted below.



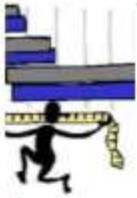
Projects fail to succeed due to project management issues during execution, not technical capabilities.

MEFIT processes and procedures provide consistent performance regardless of team members.

MEFIT can monitor projects and accurately forecast project performance: no surprises

MEFIT brings execution efficiency through benchmark data, library database, knowledge base, workflows, IT solutions.

MEFIT approach to achieve Delivery Excellence is shown below



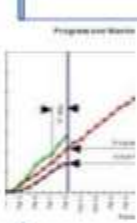
PROJECT BASELINE

- Consistent baseline method
- Facilitate project startup
- Objective change management
- Consistent project monitoring



PROCESS WORKFLOWS

- Consistent Work Quality
- Worksharing



PROGRESS MEASUREMENT

- Auditable and independent
- Standard Rules of Credit and Workflow



LOCATION

- Experts in Houston and Rome
- Cost effective delivery
- High availability production



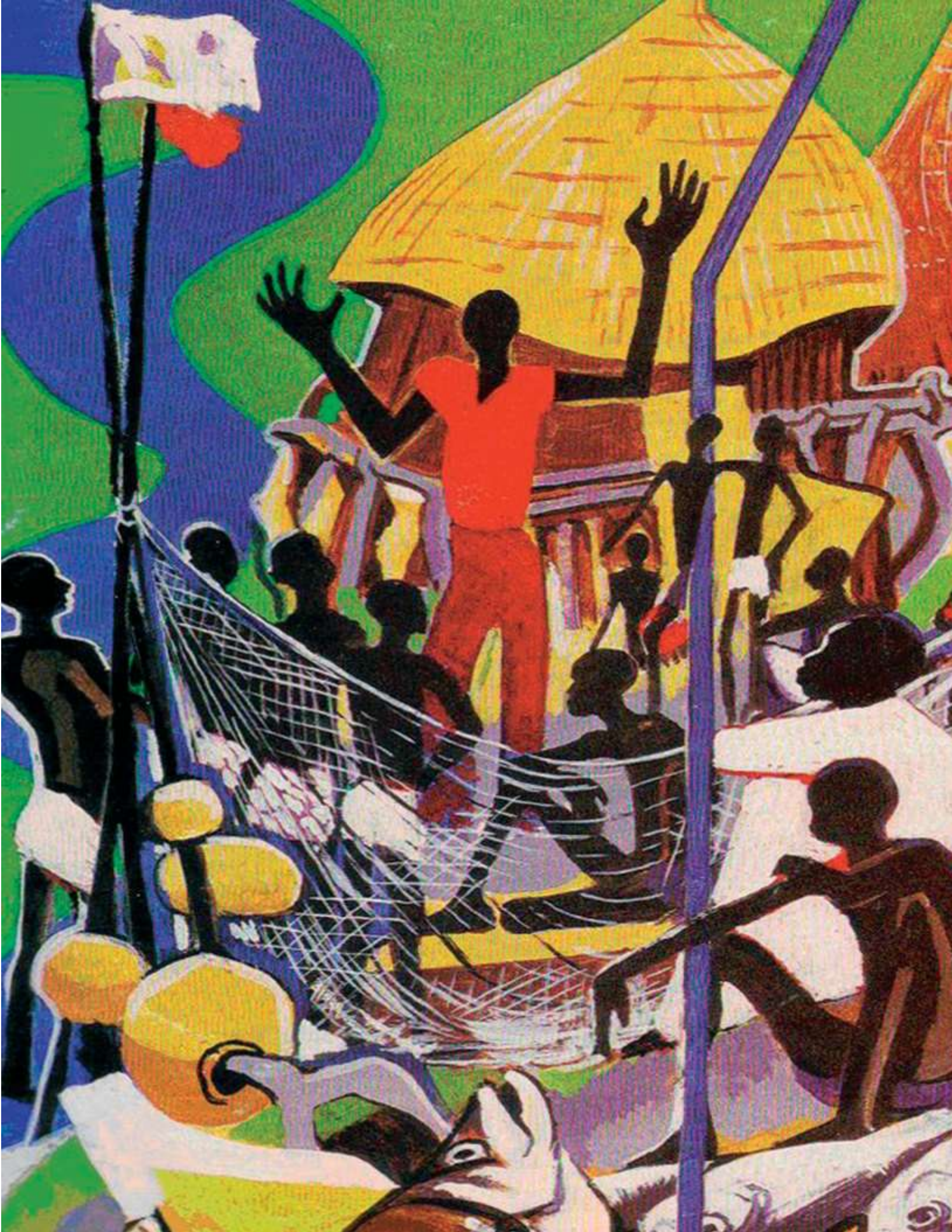
RISK MANAGEMENT

- Look-ahead
- Database
- Lessons learned and integrated in the value chain

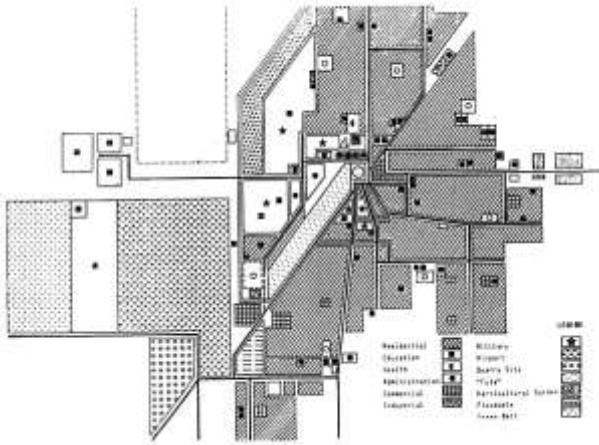


CONTINUAL IMPROVEMENT

- Plan Do Check Act Process
- Standards and benchmarks
- Continuous feedback



Town and Urban Planning



Beautification of Khartoum Programme, *Khartoum, Sudan 1973;*

Regional Plan, General Development Scheme, *Khartoum, Sudan;*

Regional Plan, Metropolitan Development Scheme, *Khartoum, Sudan;*

Regional Plan, Metropolitan Development Scheme, *Khartoum, Sudan;*

Regional Plan, Metropolitan Development Scheme, *Khartoum, Sudan;*

Urban Plan, General Development

Scheme, *Khartoum, Sudan;*

Urban Plan, Khartoum Town Development Scheme, *Sudan;*

Urban Plan, Khartoum North Development Scheme, *Sudan;*

Urban Plan, Omdurman Development Scheme, *Khartoum, Sudan;*

Urban Development Plan, *Sudan, 1984;*

Urban Development Plan, *El Fasher, Sudan, 1984;*

Urban Development Plan, *El Geneina, Sudan, 1984;*

Urban Development Plan, *Ed Da'Ein, Sudan, 1984;*

Urban Development Plan, *Nyala, Sudan, 1984;*

Urban Development Plan, *Zalingei, Sudan, 1984;*

Urban Development Plan, *Kutum, Sudan, 1984;*

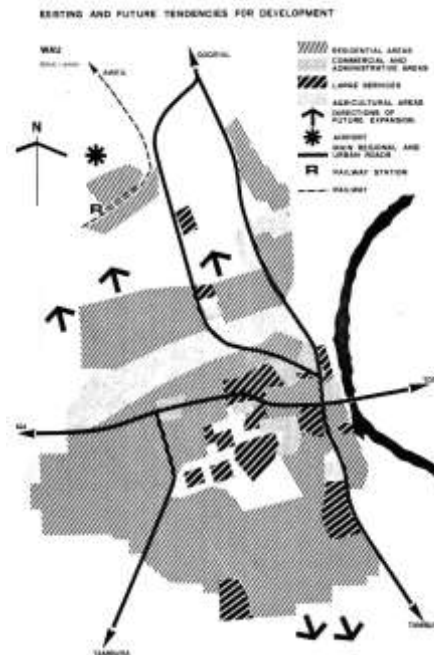
Master Plan, *Bor, Sudan;*

Master Plan, *Yambio, Sudan;*

Master Plan, *Rumbek, Sudan;*

Master Plan, *Malakal, Sudan;*

Master Plan, *Wau, Sudan.*



Projects

Government Buildings

- Moqren Point, *Khartoum, Sudan, 1973*;
- New Officers Club, *Khartoum, Sudan, 1973*;
- Royal Palace, *Amman, Jordan, 1973*.
- Rehabilitation of Rural Hospitals, *Uganda, 1989*;



Commercial Facilities

- Grand Hotel, *Khartoum, Sudan, 1975*;
- Nile Hotel Complex, *Kampala, Uganda, 1987*;
- Lake Victoria Hotel, *Kampala, Uganda, 1989*;
- Feasibility Study Hurgada Hotel, *Egypt, 1992*;
- Entebbe Beach Resort, *Entebbe, Uganda, 1988*;
- Standard Chartered Bank Head Office, *Dar Es Salam, Tanzania, 1989*;
- Finfine Hotel Complex, *Addis Abeba, Ethiopia, 1992*;
- Gran Duke Hotel, *Vladimir, Russia, 1993*;
- OBC, “Melut Basin Oil Development Project”, *AlJebelain, Sudan, 2004*;
- OBC, “Melut Basin Oil Development Project”, *Palouge, Sudan, 2004*;
- Schools, Houses & Health Centers, *Gedaref, Sudan, 2007*.

Infrastructure

- International Airport, *Karthoum, Sudan, 1973*;
- Jerico International Airport, *Jerico, Palestine, 1999*;
- Third Road Project Contract: *Galle, Matara, Akuressa, Hakmana, Sri Lanka, 1993*;
- Jonglei Canal Area, *Jonglei, Sudan 1982*;
- Ramshel, *South Sudan 2006*.



Regional Plan and Urban Master Plans

Northern Kordofan State Development Plan & Urban Plans, *Sudan, 2006*;

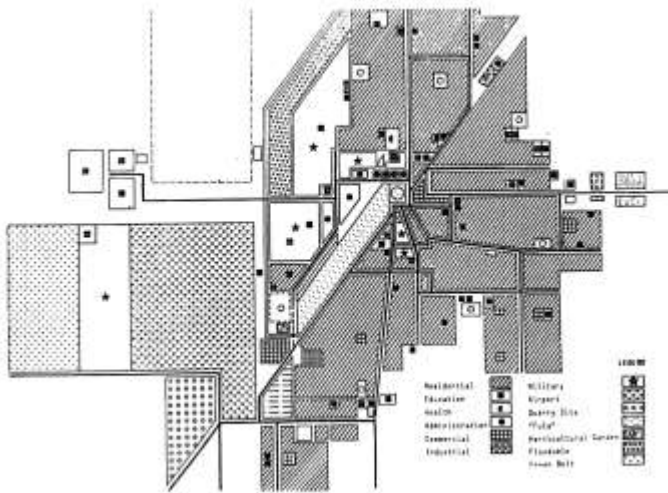
Khartoum State Master Plan Project KPP5, *Sudan, 2009*;

Gedaref State Regional Development Plan, *Sudan*;

White Nile State Development Plan & Urban Plans, *Sudan*;

KTP Khartoum Transport and Mobility Master Plan, *Sudan, 2014*;

River Nile Regional Development Plan and Urban Plan, *Sudan 2016*.



Light Industry

Pharmaceuticals Plant, *Kampala, Uganda, 1990*;

Bottling Plant, *Sochi, Russia 1993*;

Wood Processing Plant, *Ghana, 1992*;

Fruit Packaging Plant, *Ethiopia, 1992*



Solar Power Plants

Building integrated PV Power Plant 2.2 MW, *Gicignano, Italy, 2011*

Roof mounted PV Power Plan 1 MW, *Carinara, Italy 2011*

PV Power Plant 1MW *Cicciano, 2011*

PV Power Pant 1.2MW *Liberi, Italy 2012*

Roof mounted Industrial PV Power Plant 0.5 MW, *Gricignano, Italy 2012*

Roof mounted Industrial PV Power Plant 2.2 MW, *Nusco, Italy 2013*

PV Power Plants 2MW and 3MW, *Barbulesti Romania 2016*



info@mefitltd.com

www.mefitltd.com