

**Servomech Screw Jacks**  
Use pages 1-2 for 'travelling screw'  
or pages 3-4 for 'travelling nut'

Company: \_\_\_\_\_

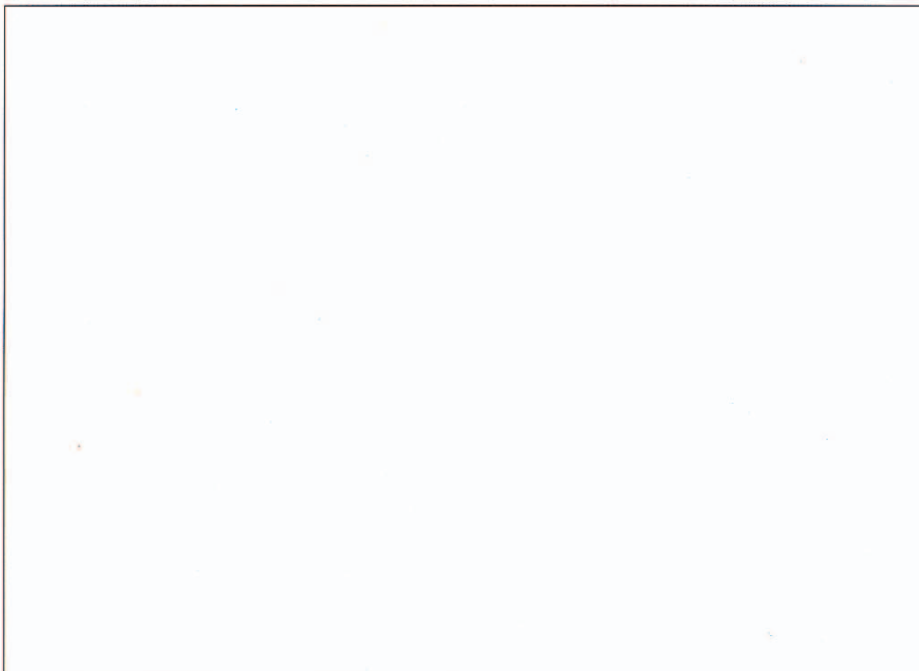
Address: \_\_\_\_\_

Contact person: \_\_\_\_\_ Position: \_\_\_\_\_

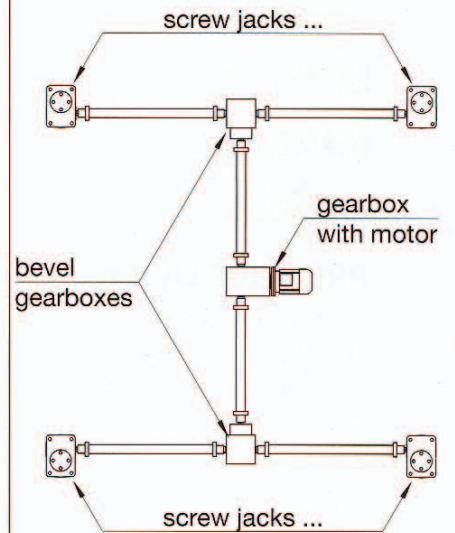
Telephone: \_\_\_\_\_ Fax: \_\_\_\_\_ E-mail: \_\_\_\_\_

APPLICATION: \_\_\_\_\_

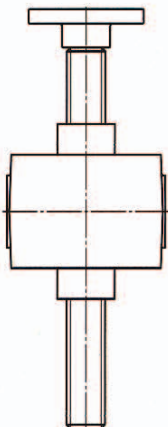
SKETCH - APPLICATION LAYOUT - plane view



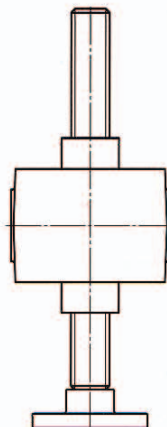
Example



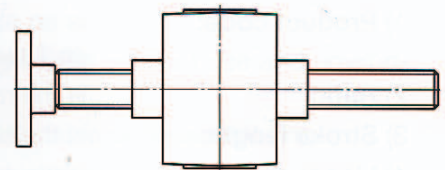
Side view of a single screw jack



UPWARD MOUNTING



DOWNWARD MOUNTING



HORIZONTAL MOUNTING

### Servomech Screw Jacks

Use pages 1-2 for 'travelling screw'  
or pages 3-4 for 'travelling nut'

NUMBER OF SCREW JACKS PER APPLICATION: \_\_\_\_\_

STROKE REQUIRED: \_\_\_\_\_ mm ACME SCREW LENGTH: \_\_\_\_\_ mm

**TOTAL STATIC** LOAD FOR APPLICATION: PULL: \_\_\_\_\_ daN PUSH: \_\_\_\_\_ daN

**MAX. STATIC** LOAD FOR **SINGLE SCREW JACK**: PULL: \_\_\_\_\_ daN PUSH: \_\_\_\_\_ daN at STROKE \_\_\_\_\_ mm

SCREW JACK MOUNTING:

- Euler I (screw jack housing firmly fixed to the base – free acme screw end)
- Euler II (screw jack housing and acme screw end fixed to pivoting supports)
- Euler III (screw jack housing firmly fixed to the base – guided acme screw end)

SCREW JACK  SUBJECTED TO VIBRATIONS  NOT SUBJECTED TO VIBRATIONS

**TOTAL DYNAMIC** LOAD FOR APPLICATION: PULL: \_\_\_\_\_ daN PUSH: \_\_\_\_\_ daN

**MAX. DYNAMIC** LOAD FOR **SINGLE SCREW JACK**: PULL: \_\_\_\_\_ daN PUSH: \_\_\_\_\_ daN at STROKE \_\_\_\_\_ mm

LINEAR SPEED REQUIRED: \_\_\_\_\_ mm/s \_\_\_\_\_ mm/min \_\_\_\_\_ m/min SINGLE STROKE PERFORMING TIME: \_\_\_\_\_ s

DUTY CYCLE: \_\_\_\_\_ cycles / hour \_\_\_\_\_ working hours / day Notes: \_\_\_\_\_

LIFETIME REQUIRED: \_\_\_\_\_ cycles \_\_\_\_\_ clock hours \_\_\_\_\_ calendar days Notes: \_\_\_\_\_

ENVIRONMENT: TEMPERATURE \_\_\_\_\_ °C  DUST HUMIDITY \_\_\_\_\_ % POLLUTER \_\_\_\_\_

Flange end

Threaded end

Bellows

Guides

Axial backlash adjustment

Protective tube

Stop nut

Anti-turn device

Stroke end switches

Rod end

Safety nut

Suggestions based on previous experiences of similar application: \_\_\_\_\_

Notes: \_\_\_\_\_

Number of screw jacks required: \_\_\_\_\_

**Servomech Screw Jacks**  
Use pages 1-2 for 'travelling screw'  
or pages 3-4 for 'travelling nut'

Company: \_\_\_\_\_

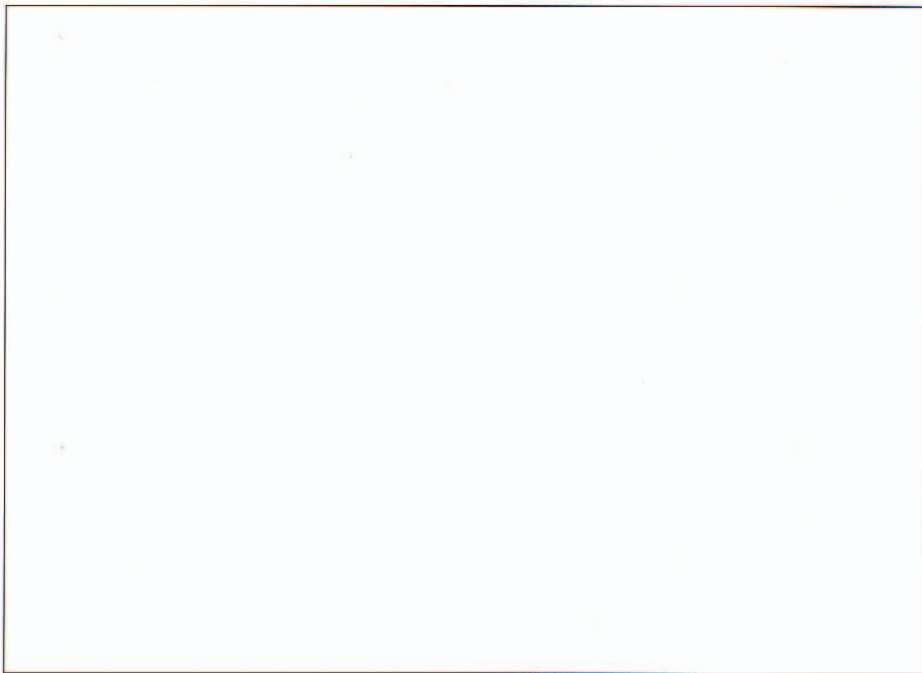
Address: \_\_\_\_\_

Contact person: \_\_\_\_\_ Position: \_\_\_\_\_

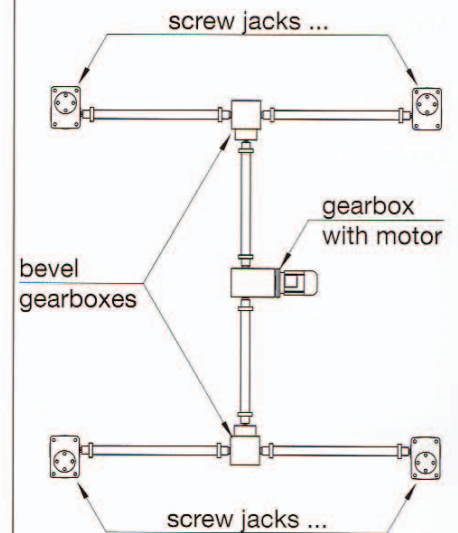
Telephone: \_\_\_\_\_ Fax: \_\_\_\_\_ E-mail: \_\_\_\_\_

APPLICATION: \_\_\_\_\_

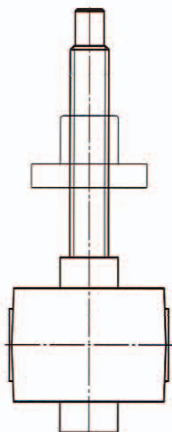
SKETCH - APPLICATION LAYOUT - plane view



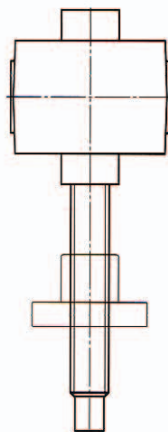
Example



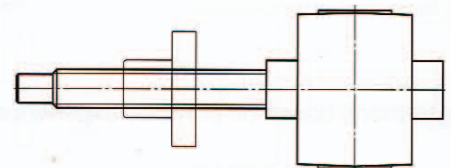
Side view of a single screw jack



UPWARD MOUNTING



DOWNWARD MOUNTING



HORIZONTAL MOUNTING

### Servomech Screw Jacks

Use pages 1-2 for 'travelling screw'  
or pages 3-4 for 'travelling nut'

NUMBER OF SCREW JACKS PER APPLICATION: \_\_\_\_\_

STROKE REQUIRED: \_\_\_\_\_ mm ACME SCREW LENGTH: \_\_\_\_\_ mm

**TOTAL STATIC** LOAD FOR APPLICATION: PULL: \_\_\_\_\_ daN PUSH: \_\_\_\_\_ daN

**MAX. STATIC** LOAD FOR **SINGLE SCREW JACK**: PULL: \_\_\_\_\_ daN PUSH: \_\_\_\_\_ daN at STROKE \_\_\_\_\_ mm

SCREW JACK MOUNTING:

- Euler I (screw jack housing firmly fixed to the base – free acme screw end)
- Euler II (screw jack housing and acme screw end fixed to pivoting supports)
- Euler III (screw jack housing firmly fixed to the base – guided acme screw end)

SCREW JACK  SUBJECTED TO VIBRATIONS  NOT SUBJECTED TO VIBRATIONS

**TOTAL DYNAMIC** LOAD FOR APPLICATION: PULL: \_\_\_\_\_ daN PUSH: \_\_\_\_\_ daN

**MAX. DYNAMIC** LOAD FOR **SINGLE SCREW JACK**: PULL: \_\_\_\_\_ daN PUSH: \_\_\_\_\_ daN at STROKE \_\_\_\_\_ mm

LINEAR SPEED REQUIRED: \_\_\_\_\_ mm/s \_\_\_\_\_ mm/min \_\_\_\_\_ m/min SINGLE STROKE PERFORMING TIME: \_\_\_ s

DUTY CYCLE: \_\_\_\_\_ cycles / hour \_\_\_\_\_ working hours / day Notes: \_\_\_\_\_

LIFETIME REQUIRED: \_\_\_\_\_ cycles \_\_\_\_\_ clock hours \_\_\_\_\_ calendar days Notes: \_\_\_\_\_

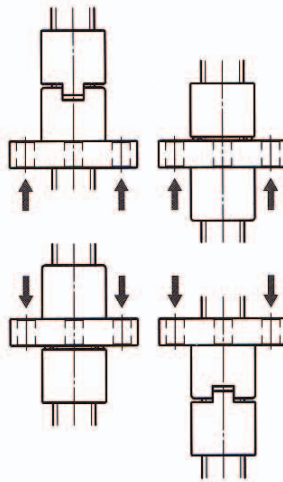
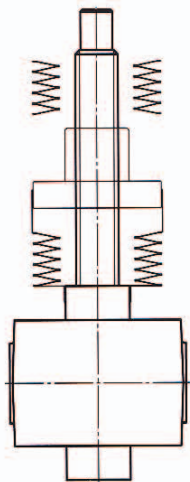
ENVIRONMENT: TEMPERATURE \_\_\_\_\_ °C  DUST HUMIDITY \_\_\_ % POLLUTER \_\_\_\_\_

Cylindrical end

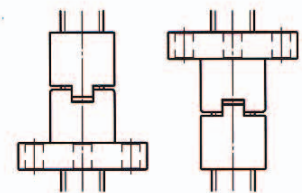
Bellows

Bronze nut

Bellows



Safety nut



Axial backlash adjustment

Suggestions based on previous experiences of similar application: \_\_\_\_\_

Notes: \_\_\_\_\_

Number of screw jacks required: \_\_\_\_\_