

KMFGROUP

kmf.co.uk

INDUSTRIAL MANUFACTURING PRODUCTS

Market Leading Precision Sheet Metal
and Precision Engineering



KMFGROUP

We are a trusted manufacturing partner to successful manufacturers and producers of high value parts in fast growing market segments.

If you are looking to add value to your business, get in touch.

Sales@kmf.co.uk | kmf.co.uk



KMF
PRECISION SHEET METAL

Millennium Way
High Carr Business Park
Newcastle-under-Lyme
Staffordshire. ST5 7UF

01782 569060
info@kmf.co.uk

KMF
PRECISION ENGINEERING

Unit 5, Rosevale Business Park
Rosevale Road
Newcastle-under-Lyme
Staffordshire. ST5 7UB

01782 563020
info@kmfprecision.co.uk

KMF
SLOVAKIA
PRECISION SHEET METAL

Johanna Vaillanta 3043/2
913 11 Trenčianske Stankovce
Slovakia

+421 (0)32 6401210
info@kmf.sk



SHEET METAL MANUFACTURING

Established in 1971, KMF Group is the leading provider of precision sheet metal manufacturing and precision engineering, to companies within a range of fast-growing industry sectors. We have been delivering innovative and comprehensive manufacturing solutions to our customers for over 45 years.

From the complex assembly of fully integrated metal enclosures, to the production of high-value precision parts, businesses of all sizes rely on us for product and process expertise.

Our agile manufacturing processes offer the flexibility your products require, while meeting or exceeding all technological, quality and regulatory requirements. When you engage with KMF, you gain a reliable, single-source manufacturing partner, committed to exceptional customer service, operation excellence and high quality.



Expert Precision Sheet Metal Fabrication

Our comprehensive conventional and CNC fabrication and machining facilities extend to 225,000 Square Ft and run 24 hours a day, 7 days a week, located in Staffordshire in the UK and Trencin, Slovakia.

We deliver a wide range of custom manufactured components, including complete turn-key solutions to leading OE manufacturers in the UK and Europe.

Within our modern fabrication and assembly facilities, we offer standard fabrication processes such as CNC punching, bending and welding, as well as value-added services such as product

design, electro-mechanical integration and custom despatch. We also house dedicated manufacturing units for stainless steel fabrications, specialist integration and quality stringent manufacture for sectors such as Aerospace, Medical and Military.

Additionally, our manufacturing facilities are supported by comprehensive in-house testing and quality assurance, to ensure your components are fabricated, machined, coated, integrated or painted exactly how you have specified.

Services

- CNC Punching
- Laser Cutting
- Bending
- Welding
- 5-Axis Machining
- CNC Milling
- CNC Turning
- Deburring / Graining
- Inserting
- Powder Painting / Silk Screening
- Part Identification Marking
- Laser Etching
- Full Traceability
- Passivation
- 3D Design & Development
- Electro-Mechanical Integration
- Assembly
- Custom Despatch

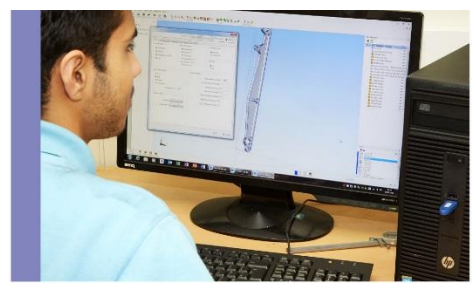
HIGH PRECISION COMPONENTS

Leading manufacturers face challenges including continuous product innovation, which increases complexity, time-to-market and cost pressures. KMF's advanced technology, expertise and extensive machining capacity secures our ability to deliver **reliable, high-level subcontract manufacture across many industry sectors.**

Our impressive array of equipment—including simultaneous and fixed 5-axis technology, sliding head machining centres, multiaxial milling and turning machines, precision tapping centres and metrology equipment—serves a single purpose: ensuring the highest precision and quality of the production of machined components.

In addition, our automated Mazak Pallettech systems are designed with the flexibility required for creating **shorter cycle times, reducing in-process inventory and simultaneously producing multiple parts over a single shift.**

The latest CNC machines, experienced industry professionals and an expedited delivery schedule make KMF the number one manufacturing partner for ambitious manufacturers.

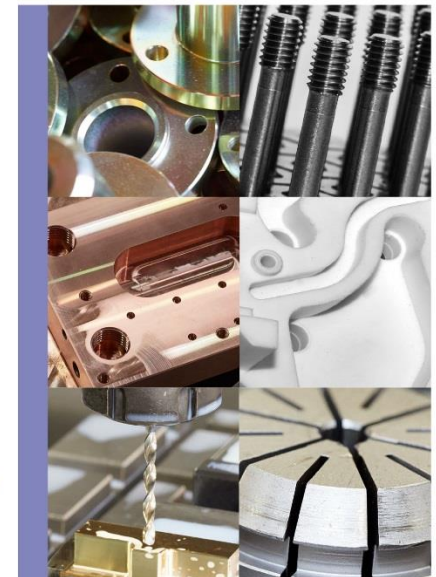


Small batches to large-scale product transfers

Although KMF has the capacity to fulfil both small and large batches depending on customer requirements, we also have **extensive experience of dealing with large scale product transfers.**

KMF Group can offer shared expertise and manufacturing resources within the engineering sector, allowing us to **act as a one-stop manufacturing supplier for supply chains requiring complex, multi-part assemblies.**

We can work on complex production processes and cut investment and tooling costs, allowing clients to focus on core competencies and receive a greater return on their outsourcing investment.



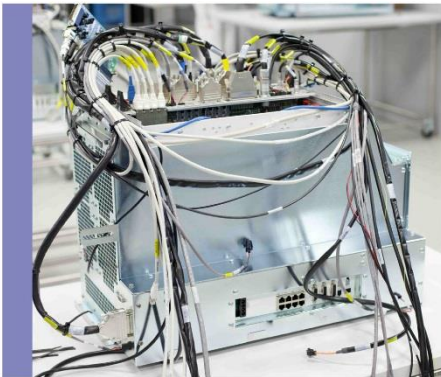
ADVANCED ENGINEERING SOLUTIONS FOR STRINGENT INDUSTRY SECTORS

KMF Group has future-proofed the global growth potential of the aerospace and medical sectors through the construction of a multi-million-pound 'Advanced Solutions' facility — a purpose-built engineering unit that operates under fully documented quality control procedures.

The 11,000 Sqft unit is designed specifically to meet the stringent requirements of the most demanding industrial and commercial sectors and to satisfy clients who require specialist electrical integration.

Advanced Solutions allows KMF to excel in supplying the aerospace, medical and military markets and complements the effective working methods, processes and control systems already in place, which make KMF a leading UK supplier of precision sheet metal solutions.

The unit offers the latest technology in sheet metal manufacturing, along with the enhanced features of a computer-controlled tower inventory and an electrostatic discharge (ESD) compliant integration suite.



Full Product Traceability & Specialised Electrical Integration

Sharing the state-of-the-art cutting and profiling equipment with the main metal fabrication site, Advanced Solutions adds tight process control and full product traceability.

Staff work hard to maintain both product and process integrity, maintaining a **BSI AS9100 accreditation** by employing visual controls and error proofing systems wherever practical. When required, manufactured subpart traceability can be provided by the use of efficient part marking systems and advanced ERP software, to link component level to customer contracts.



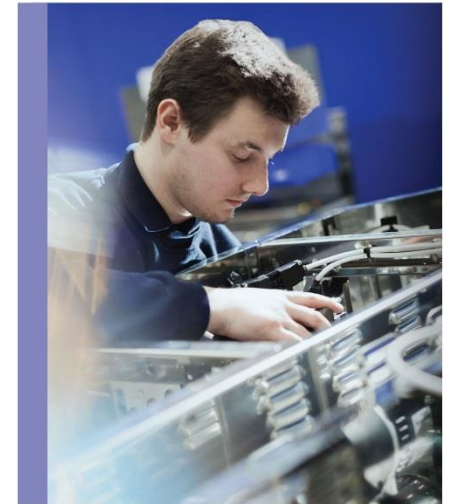
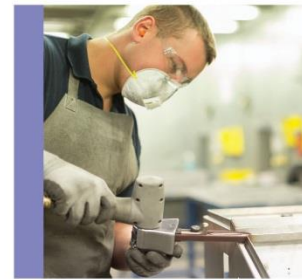
STAINLESS-STEEL SPECIALISTS

KMF is a serious player in the stainless-steel fabrication industry, specialising in the manufacture of high-quality fabrications and components which deliver high corrosion resistance, durability and performance over time.

KMF Special Products cell is a **bespoke, purpose built manufacturing facility dedicated to stainless steel and non-ferrous fabrication.**

This unit allows KMF to offer a comprehensive metal dressing service. **The dressing capability permits stainless steel fabrications to be finished to the highest quality in a variety of brushed, grained or glass bead blasted finishes.**

KMF's Special Products facility shares CNC punching services with the central metal fabrication site at KMF Precision Sheet Metal but houses a **dedicated bending department, welding bays, a bespoke linishing and finishing room and a glass bead blasting cabinet**, making KMF the perfect manufacturer for customers who **favour separate processing of ferrous and non-ferrous materials.**



As stainless-steel fabricators, KMF combines the efficient use of the latest technological advances in traditional metal fabrication methods to deliver products such as conveyors, cabinets, racks, display stands and food processing equipment at competitive costs.

Our reputation for quality and precision in the manufacture of stainless steel components is reflected in our blue-chip client portfolio and spans various industries, such as food and packaging, garage forecourt and medical equipment.



SECTORS



AEROSPACE

KMF have over 45 years experience in the manufacture of aerospace parts, aviation components and aircraft products.

Our engineers are fully versed in working with advanced aerospace metals such as titanium, aluminium and specialist steels/alloys and extensive expertise in the design and manufacture of specialised aircraft assemblies, ensures any part you order absolutely maintains integrity and meets stringent requirements.

Product Experience Includes: *Avionics, Interiors such as seat trays, storage cabinets and air purification units, frames for electronics and associated components.*



FOOD & PACKAGING

KMF have the expertise and capacity to develop products from concept to complete end-user turnkey solutions, within exceptional lead times.

Complementary on-site facilities for glass bead blasting, laser engraving and silk screening, alongside continuous improvement strategies and expert project management, ensure competitiveness and operation efficiency at every stage of manufacture.

Product Experience Includes: *Weighing, labelling and print equipment, portion and pack distribution systems, conveyors and machinery related to inspection and quality control.*



KIOSK & VENDING

A large flexible area fully equipped to provide complete high-level electromechanical assemblies enables KMF to act as a one-stop-shop for kiosk and vending manufacturers.

An internal Kanban system and expert supply chain management ensures fast turnaround, the meeting of tight delivery schedules and the timely completion of parts for final assembly.

Product Experience Includes: *Vending machines for international coffee suppliers, baggage check-in units for airports, ticket machines for transport hubs, digital display units and Bluetooth-controlled laptop charging lockers.*



RAIL

KMF supports the rail network with metal fabricated and engineered components for all divisions of the rail industry, from the platform and track side to rail interiors and rolling stock.

Industry-leading technology provides the flexibility for small and large size batches, powder-coated surfaces, pre-drilled assembly holes, mounting hinges, and electrical components ready for wiring with all products quality inspected for exact conformance to clients' requirements.

Product Experience Includes: *Cabinet enclosures, ticketing kiosks, street furniture, storage and racking systems, as well as complex machined components for application in rail interiors, signal equipment and track side fittings.*



MEDICAL

KMF has the specialist resources needed to project-manage complicated supply chains and to offer its key customers within the medical sector, a complete integrated build option.

Clients can expect the highest output and assembly standards with high-value PCBA and wiring loom assemblies, box-built to industry standards.

Product Experience Includes: *Application-ready components for medical storage, racking systems and monitor stands and machined parts for medical laboratory equipment such as analysers, tape heads and spectrometers.*



WASHROOMS & SANITATION

KMF realises the high demand for washroom accessories is one that must be met with superior quality and high-performance products.

Flexible production allows small batch orders or large-scale product transfers and professional design services ensure the manufacture of effective solutions which incorporate modern design and competitive costing.

Product Experience Includes: *Dispensing equipment, waste bins, hand dryers, storage cabinets and fully integrated wash stations for commercial and public washrooms.*



SWITCHGEAR

A cost competitive culture throughout manufacture, focussed on effective supply chain management, sheet utilisation and design for manufacture, allows KMF to provide both product and cost improvements in product development.

Unrivalled capacity and dedicated customer production cells allows delivery of high product volumes at speed and on-budget.

Product Experience Includes: *Low (LV) and medium voltage (MV) switchgear boxes and distribution boards (DB), metal enclosures for switchgear systems, control mechanisms, wiring enclosures and meter cabinets.*



TELECOMMUNICATIONS

The KMF Group specialises in communication infrastructure and the provision of data management units across many telephone and internet platforms.

Strong engineering relationships with customers and expert new product introduction processes allow us to bring telecom products to market rapidly, to meet fast changing customer needs and regulatory requirements.

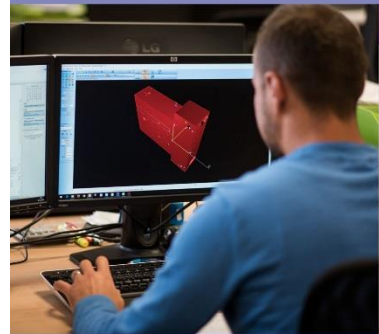
Product Experience Includes: *Storage and racking systems, data cabinets, connectivity products, pole mounts, video conferencing units and patch panels.*

Metal products manufactured by KMF Group can range from simple metal cabinet fabrications to complex, fully-integrated electro-mechanical units containing hundreds of sub-components.

KMF work to fully understand the unique market needs of our customers, to provide solutions that help you reach your objectives. We work as your partner to improve competitiveness and quality, reduce time to market and simplify your supply chain.

Other sectors include: Renewable Energy, Defence, Security, Retail, POS and forecourt equipment.

MANUFACTURING OVERVIEW PROCESS FLOW



PRODUCT DESIGN

Innovative solutions to add value and improve competitiveness

- Expert project management with a focus on quality, cost efficiency, shorter lead times and product suitability
- Design for Manufacture and a value engineering methodology
- The ability to offer comprehensive, integrated solutions



NEW PRODUCT INTRODUCTION

Transforming designs into competitive, manufacturable products

- Rapid prototyping and robust testing for manufacturability and high quality
- The latest technology and software to provide product developments and cost improvements in both production concepts and new product development
- Proven systems to move seamlessly from NPI to repeat order



MANUFACTURE

Industry leading technology and process verification to consistently deliver quality

- Deliver full turn-key manufacturing solutions on-time and defect-free
- Proactively seek solutions to problems with a focus on improving affordability and efficiency
- Unrivalled technology and capacity to comfortably meet growth ambitions with speed and high quality



INTEGRATION

Full turnkey electro-mechanical integration capabilities

- An electrostatic discharge assembly area for dedicated assembly of static sensitive components and individual integration business units for each customer and their products, in order to provide the most cost-effective manufacturing solutions
- Ability to build looms, manage printed circuit boards and design bespoke functional test fixtures
- Allows KMF to act as a single source manufacturing solution for high-level, value-added assembly work



QUALITY

Rigorous quality standards and regulatory requirements

- Engagement in Continuous Improvement programmes that increase organisational efficiency, reduce product costs, improve product and process performance, reduce cycle times and eliminate waste
- Four ISO Accreditations, representing strong commitment to quality, the environment and health and safety



SUPPLY CHAIN MANAGEMENT

Value-adding sourcing and a cost competitive culture

- A strong supplier network which is committed to working towards innovations to drive cost, reliability and capacity
- Aim to strengthen your supply chain by building integral relationships, offering expertise on new materials and processes
- A best in class Enterprise Resource Planning (ERP) system, using a system of integrated applications, to simultaneously manage complex sourcing and production processes

ONE OF FEW UK MANUFACTURERS TO HOLD FOUR ISO ACCREDITATIONS

Superior quality and customer focus are evident in everything that the KMF Group manufactures, tests and delivers.

Continued registration to four ISO Accreditations: ISO 9001:2015 Quality Management, ISO 14001 Environmental Standard, ISO 9100 Aerospace and OSHAS 18001 Health and Safety Standard, provides evidence for our commitment to quality, customer service and sustainability and allows us to deliver the highest product reliability at a competitive price.

Product testing, formal systematic methods, interim control points and engagement in continuous improvement programmes, ensure quality at every stage of manufacture.

It is this emphasis on quality, innovative technology and complete manufacturing solutions that drive our business and provides KMF customers with a competitive advantage in the global marketplace for sheet metal fabrication and machined components.