



## Slim, and Easy-to-use

### Features:

- Large 11.7" x 16.5" scanning area
- Multiple images cropping
- Easy-to-use button scanning
- Auto crop, deskew and thresholding image-enhancing features
- Bundled software applications include Avision Button Manager V2, Avision AvScan 5.0, ScanSoft PaperPort SE 14

The FB5000 is Avision's next generation of A3 flatbed scanner. Based on CIS (Contact Image Sensor) technology, the scanner is much more slimmer compared to traditional scanner with CCD design.

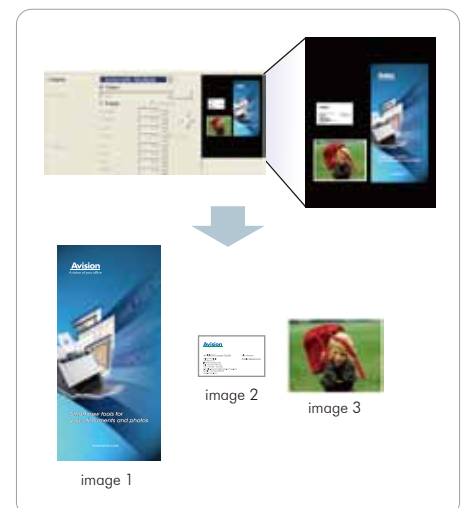
Capable of scanning up to A3 size, the slim FB5000 is perfectly suited to scan complete book spreads, two letter-sized pages (simultaneously), large-format magazines, legal-sized documents, photographs and more, all in brilliant color.

In addition, the scanner comes with the convenient feature of multiple images cropping. With this feature, various sizes of documents such as photos, ID Cards, or business cards can be placed on the flatbed and the scanner is able to crop and create multiple images according to the original sizes of the documents in one single scan.

To increase ease of use, a convenient, programmable button feature permits users to pre-set nine customized functions for different scanning needs. For example, you can send your image to nine preset destinations such as printer, e-mail, folder, or photo editing software application in PDF, TIFF, JPEG, GIF, or BMP file format by simply pressing a button.

### Multiple Cropping

With this feature, various sizes of documents such as photos, ID Cards, or business cards can be placed on the flatbed and the scanner is able to crop and create multiple images according to the original sizes of the documents in one single scan.



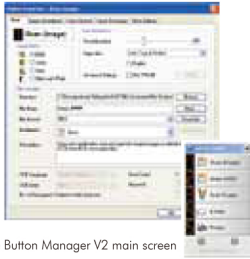
### What we have bundled

The Avision FB5000 scanner comes with TWAIN and ISIS drivers, and is bundled with Avision Button Manager V2, Avision AvScan 5.0, and ScanSoft PaperPort SE 14 software application.

# Avision FB5000 A3 Slim Flatbed Scanner

## Avision's Button Manager V2

-Completes your scan with a single step

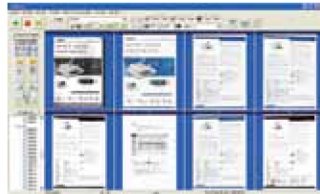


The Button Manager V2 main screen

Button Manager V2 makes it easy for you to scan and send your image to your favorite destinations with a press one button. Now the new version comes with an innovative feature to let you scan and automatically upload the scanned document to popular cloud repositories such as Google Docs, Microsoft SharePoint, or FTP. In addition, the iScan feature allows you to insert the scanned image or recognized text after optional OCR (Optical Character Recognition) process to your text editor such as Microsoft Word to get your job done easily and quickly.

## AvScan 5.0

-The Intelligent Document Management Tool

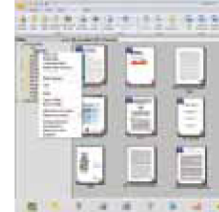


The AvScan 5.0 main screen

Document Imaging is the very first step of Document Management. However, poor quality images can cause serious problems to later indexing or storing processes. It may increase scanning labour costs and lowers the OCR accuracy. AvScan 5.0 ensures all documents are checked and polished at the time they are scanned such that the image quality is guaranteed before they are ready to use for other purposes. AvScan 5.0 is an intelligent scanning and electronic filing solution. AvScan 5.0 possesses distinct features that convert and index scanned information into electronic documents for easy storage and fast retrieval.

## PaperPort SE14

- The Professional Choice to Organize and Share Your Documents



The PaperPort SE14 main screen

PaperPort SE 14 is Nuance's most popular scanning and document management solution, carefully designed specifically for home office use. Part traditional file cabinet, part digital-document desktop, PaperPort SE 14 is the fastest and easiest way to scan, share, search, and organize your documents. Additionally, PaperPort SE 14 now delivers anytime-anywhere access to your most important files however it's convenient for you – using a PC, Mac, iPhone, iPad, or Android device.

## Avision FB5000 Product Specifications

Paper Feeding:	Flatbed
Scanning Technology:	Contact Image Sensor ( CIS )
Document Size :	297 mm x 420 mm ( 11.7 in x 16.5 in )
Scanning Speed	6 sec. ( Including backhome: 10 sec. )
(Color@300dpi, A3) :	
Optical Resolution:	600 dpi
Output Resolution:	75, 100, 150, 200, 300, 400 and 600 dpi
Output Formats:	B/W, greyscale, 24-bit, color
Bundled Software:	Avision Button Manager V2, Avision AvScan 5.0 , PaperPort SE 14
Interface/Drivers:	USB 2.0 / TWAIN,ISIS
Power Supply:	Input: 100–240 VAC, 50/60 Hz Output: 24V, 2.0A
Power Consumption:	<22W
Environmental Factors:	Operating temperature: 10°C to 35°C (50°F to 95°F) Operating humidity: 10% to 85%
Acoustical Noise:	Standby: <32 dB Operating: <50 dB
Dimensions	585 mm x 485 mm x 96 mm
( W x D x H ):	( 23 in x 19.1 in x 3.8 in )
Weight:	7 kg ( 15.4 lbs )
Recommended	Up to 2,500 sheets
Daily Scanning Volume:	

## System Requirements

- Pentium III or higher
- Windows®XP/2000/Vista/7
- 512MB RAM (256MB RAM for Windows XP)
- CD-ROM drive
- USB port

## Contents

- FB5000 Scanner
- Power Supply
- Quick Guide
- USB 2.0 Cable
- CD-ROM includes:
  - Scanner Driver (TWAIN/ISIS Driver)
  - Avision Button Manager V2
  - Avision AvScan 5.0
  - ScanSoft PaperPortSE 14



Authorized Reseller

**CROWLEY**

240.215.0224 U.S.

[www.thecrowleycompany.com](http://www.thecrowleycompany.com)



The Avision scanners come with TWAIN and ISIS-compatible drivers. Avision Button Manager scans your documents directly to Adobe certified searchable PDF file!  
The registered brand names and product names mentioned in this document belong to each respective holder.  
Energy Star name and marks, registered marks owned by the U.S. government  
The information contained in this document(s) is subject to change without notice.