

PORTION CONTROL COLORANT™

PALOMINO

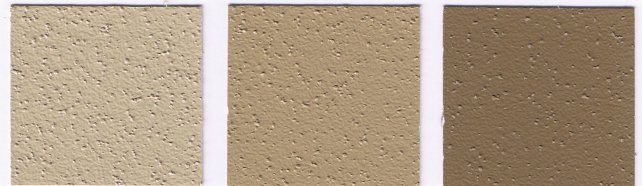


1 oz. = Limestone

3 oz. = Sandstone

8 oz. = Palomino

DESERT BEIGE



1 oz. = Dark Sandstone

3 oz. = Light Tan

8 oz. = Desert Beige

CHOCOLATE

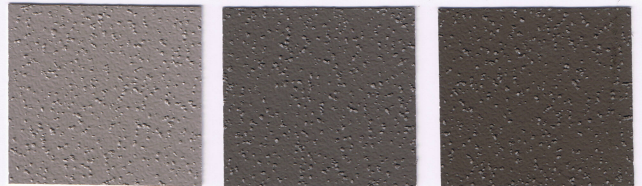


1 oz. = Buff

3 oz. = Brown

8 oz. = Chocolate

CHARCOAL

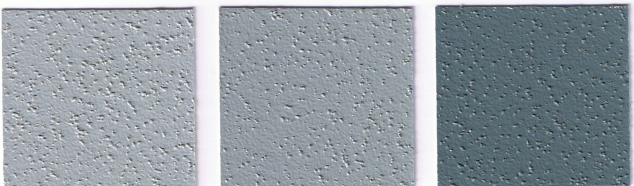


1 oz. = Oxford Gray

4 oz. = Dark Gray

8 oz. = Charcoal

DARK PLATINUM

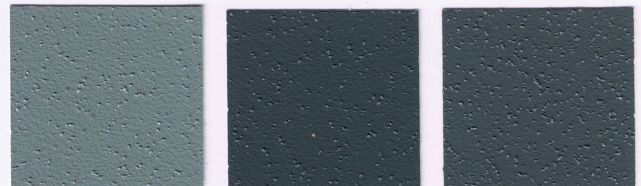


1 oz. = Light Gray

2 oz. = Platinum

8 oz. = Dark Platinum

GRAPHITE

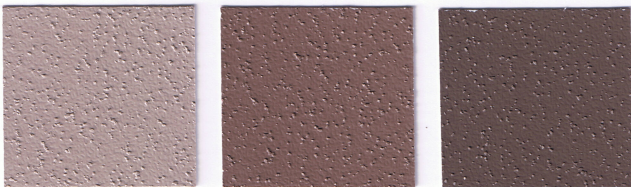


1 oz. = Gray Sky

5 oz. = Blue Slate

8 oz. = Graphite

SANGRIA

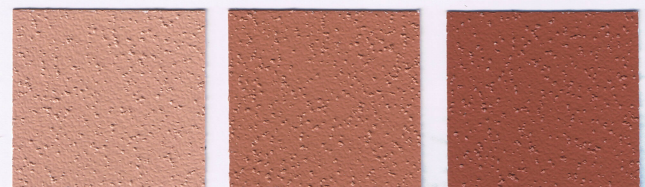


1 oz. = Coral

4 oz. = Sunset Rose

8 oz. = Sangria

TERRA COTTA

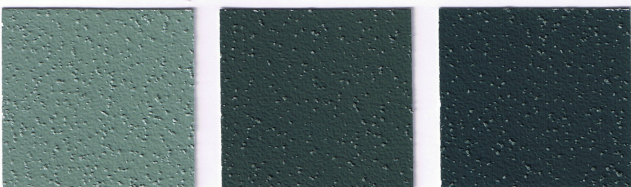


1 oz. = New Skin

3 oz. = Blush

8 oz. = Terra Cotta

FOREST GREEN

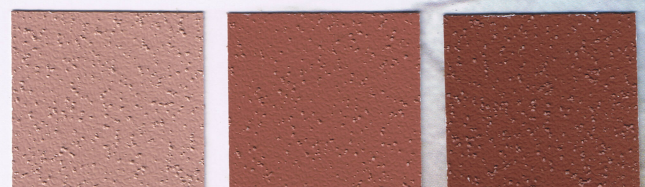


1 oz. = Green Slate

5 oz. = Green

8 oz. = Forest Green

BRICK



1 oz. = Salmon

4 oz. = Ruby

8 oz. = Brick

elite crete systems

www.EliteCrete.com

Designed for use with THIN-FINISH™, TEXTURE-PAVE™ and MICRO-FINISH™ Overlay Systems. Also used to color ULTRA-STONE™ Antiquing Stain.

Note: color samples on this chart represent the color of the sealed finish as closely as possible. Variations can be expected due to different environments, sealers used, additional stains used, various textures and methods of application. For additional information see PI.377 Product Information Portion Control Colorant. Custom colors available as special order.