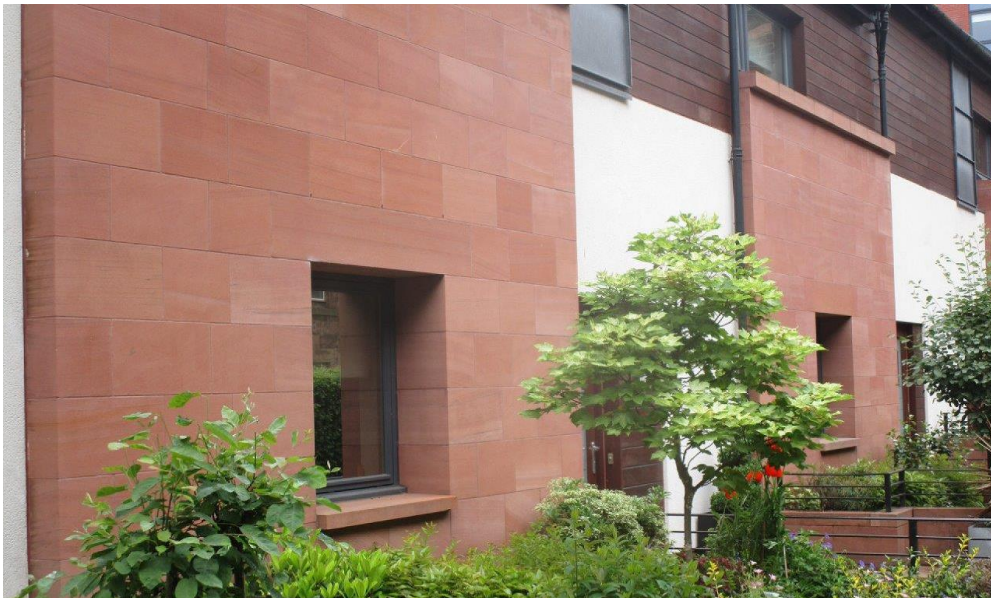


# Locharbriggs Sandstone

**Locharbriggs Sandstone** is a medium grained Permian sandstone with subtle bedding plains throughout. It is a rich red colour with linear black banding. This gives Locharbriggs its distinctive appearance, making it a popular choice for projects all over the UK.

## Quarry Location

Locharbriggs quarry is located on the outskirts of Dumfries in South West Scotland. The quarry has been in operation since 1890, and Locharbriggs sandstone can be found on projects up and down the UK. Locharbriggs sandstone features heavily in southern Scotland, and its versatile nature has made it a popular choice for both new build and restoration projects.

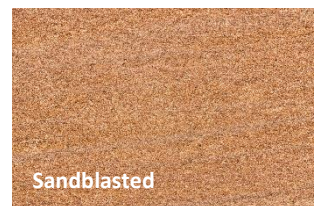


Locharbriggs sandstone cladding to a residential development.

### Suitable for:

- Walling
- Paving
- Window/Door Surrounds
- Carved Feature Stones
- Cladding Panels
- Steps/Staircases
- Coping Stones
- String Courses
- Cornice Stones
- Balustrade
- Columns
- Portico/Feature Entrances

## Natural Variations



Please note that printed colours may vary from printer to printer therefore the images contained within this datasheet are for reference purposes only. We would always recommend obtaining a sample of the stone for colour matching purposes. We are happy to supply a sample of any of our stones on request at the point of order.

These natural variations are indicative of the features that can be found within this sandstone. It is not possible to guarantee that any of the features shown will be present in any given stone, nor is it possible to guarantee the exclusion of any of these features.



# Locharbriggs Sandstone

## Technical Data

Cumbrian Stone's Locharbriggs Sandstone has been independently tested in line with British and European Standards\*. The results of these tests are as follows:

<b>Density</b>	2000kg/m3	<b>Breaking Load @ Dowel</b>	NPD
<b>Compressive Strength</b>	67.5 MPA	<b>Slip Resistance (Dry)</b>	109
<b>Water Absorption</b>	131g/m2/sec2	<b>Slip Resistance (Wet)</b>	94
<b>Porosity</b>	24.30%	<b>Abrasion Resistance</b>	NPD
<b>Durability (Freeze Thaw)</b>	Pass	<b>Vapour Permeability</b>	40 (Dry) 30 (Wet)
<b>Flexural Strength</b>	5.0 MPA	<b>Reaction to Fire</b>	Euroclass A1



From initial advice and guidance through to the manufacture and supply of bespoke natural stone products, our team of natural stone experts are on hand to assist with all of your natural stone requirements on projects of all sizes.

Give us a call, send us an email or drop in and visit our showroom today to find out how Cumbrian Stone can help with your next natural stone project.

\*Please note that as natural stone is a natural product there can be variations in the composition of the stone that would result in these test results varying across the raw material. These results are an average taken from the testing of multiple samples taken from several quarried blocks. Cumbrian Stone would always recommend consulting a structural engineer to establish the minimum required properties where natural stone is being used for structural purposes, and the results contained on this sheet are not to be taken as a structural recommendation in any case.

