

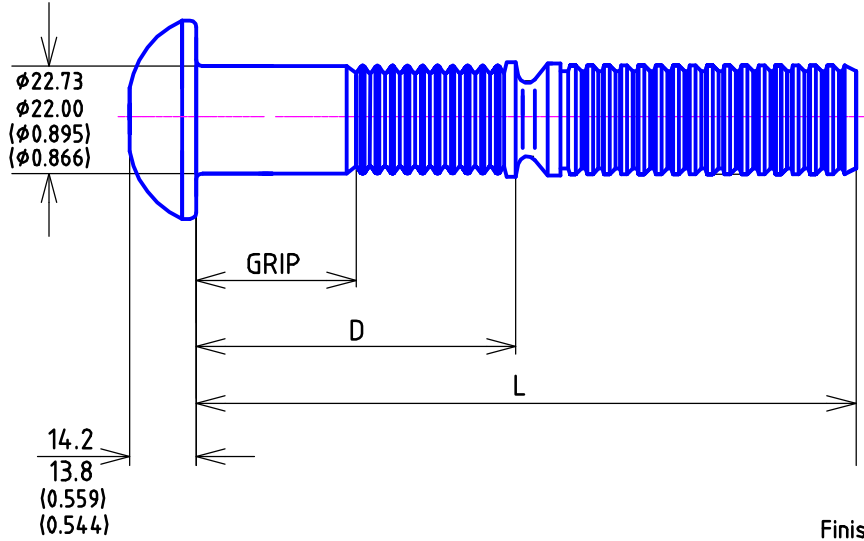
Lockbolt (ERS) Ltd

7/8" Round Head Lock Pins
Description:

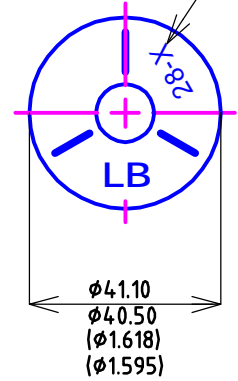
ERSB 28-X
Prod. Code:

LP-R-S28-X
STD. OR DRWG' NO.

Unit:mm/(inch)



Letter Showing:
Min-Max Grip Range



Finish:
Plain (Black & Oiled)

MECHANICAL PROPERTIES:

- Min Ultimate Tensile: 247 (KN)
- Clamping Load: 175 (KN)
- Min Shear Strength: 193 (KN)
- Max Hole Diameter: 23.7 (mm)
- Max Pin Protrusion: 9.5 (mm)
- Max Pin Intrusion: 1.6 (mm)

APPROVED BY CUSTOMER For Manufacture	
Name: _____	Date: _____
Signature: _____	

Raw Material Specification: ALLOY STEEL

7/8"	Part Number	Grip(mm)		Grip(inch)		D(mm)		D(inch)		L(mm)		L(inch)		Head Marking
		Min	Max	Min	Max	Min	Max	Min	Max	Min	Max	Min	Max	
28-08	ERSB28-08	12.70	19.05	0.50	0.75	48.20	49.40	1.90	1.94	117.60	122.10	4.63	4.80	28-8
28-12	ERSB28-12	19.05	25.40	0.75	1.00	54.50	55.70	2.15	2.19	123.90	128.40	4.88	5.05	28-12
28-16	ERSB28-16	25.40	31.75	1.00	1.25	60.90	62.10	2.40	2.44	130.30	134.80	5.13	5.30	28-16
28-20	ERSB28-20	31.75	38.10	1.25	1.50	67.20	68.40	2.65	2.69	136.60	141.10	5.38	5.55	28-20
28-24	ERSB28-24	38.10	44.45	1.50	1.75	73.60	74.80	2.90	2.94	143.00	147.50	5.63	5.80	28-24
28-28	ERSB28-28	44.45	50.80	1.75	2.00	79.90	81.10	3.15	3.19	149.30	153.80	5.88	6.05	28-28
28-32	ERSB28-32	50.80	57.15	2.00	2.25	86.30	87.50	3.40	3.44	155.70	160.20	6.13	6.30	28-32
28-36	ERSB28-36	57.15	63.50	2.25	2.50	92.60	93.80	3.65	3.69	162.00	166.50	6.38	6.55	28-36
28-40	ERSB28-40	63.50	69.85	2.50	2.75	99.00	100.20	3.90	3.94	168.40	172.90	6.63	6.80	28-40
28-44	ERSB28-44	69.85	76.20	2.75	3.00	105.30	106.50	4.15	4.19	174.70	179.20	6.88	7.05	28-44
28-48	ERSB28-48	76.20	82.55	3.00	3.25	111.70	112.90	4.40	4.44	181.10	185.60	7.13	7.30	28-48
28-52	ERSB28-52	82.55	88.90	3.25	3.50	118.00	119.20	4.65	4.69	187.40	191.90	7.38	7.56	28-52
28-56	ERSB28-56	88.90	95.25	3.50	3.75	124.40	125.60	4.90	4.94	193.80	198.30	7.63	7.81	28-56
28-60	ERSB28-60	95.25	101.60	3.75	4.00	130.70	131.90	5.15	5.19	200.10	204.60	7.88	8.06	28-60
28-64	ERSB28-64	101.60	107.95	4.00	4.25	137.10	138.30	5.40	5.44	206.50	211.00	8.13	8.31	28-64
28-68	ERSB28-68	107.95	114.30	4.25	4.50	143.40	144.60	5.65	5.69	212.80	217.30	8.38	8.56	28-68
28-72	ERSB28-72	114.30	120.65	4.50	4.75	149.80	151.00	5.90	5.94	219.20	223.70	8.63	8.81	28-72
28-76	ERSB28-76	120.65	127.00	4.75	5.00	156.15	157.35	6.15	6.19	225.55	230.05	8.88	9.06	28-76

No,	Alternation:	Date: 2013.6.20	Check:	Approved:
-----	--------------	-----------------	--------	-----------

Customer:	7/8" Round Head Lock Pins	Customer's P/No.:
		Customer's Drawing: