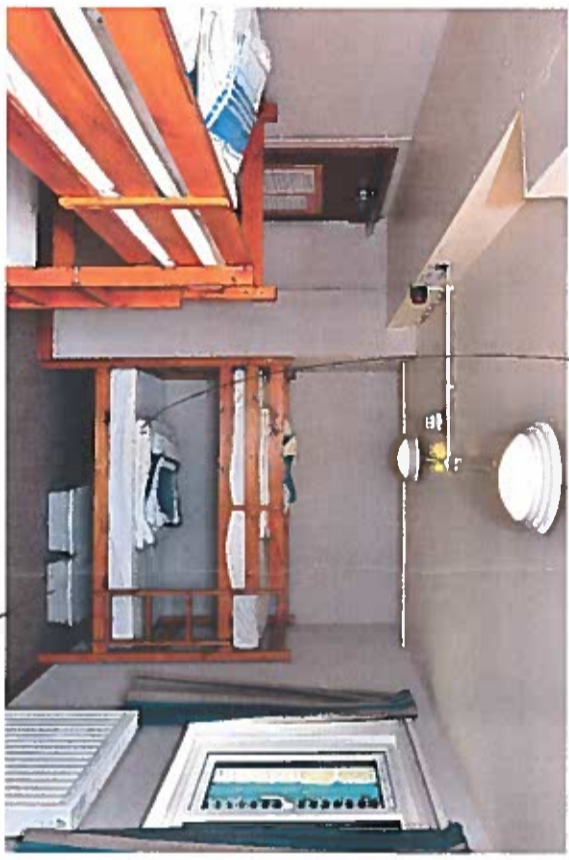


More  
Camping



Accommodation

Improve insulation  
interiors + exterior

non plastic storage  
recycled wood  
doors

bedding  
chemical  
wash  
How much  
is required  
industrially?

work in house  
transport also footprint  
to reduce

Laundry?

- Turn of light sensors?
- PIR's
- LED

Turn radiators down  
more windows  
TRV's

Shampoo /  
Soap dispensers  
on the wall so  
the guests don't need to  
bring bottles

Paper towels  
not  
electric dries

Use rain  
water  
collection  
system?

Design - easy cleaning  
Bathroom areas  
less water + cleaning materials.

Matte these →  
Flak free

Use less water  
bleach.

## Bathrooms



Timed switches  
Showers + lights

less water in cisterns -

Grey water?

Pink button showers

lights on sensors

create activities

habitat improvements - woods/bogs

Woodlands Trust - funding  
Planting Trees  
Midflamer seeds provided for  
free by some organisations  
Feed the birds?

# Grounds



→ Create wild areas (meadows)

→ regular maintenance - play like a bench -

# Rebuilding

- to what degree

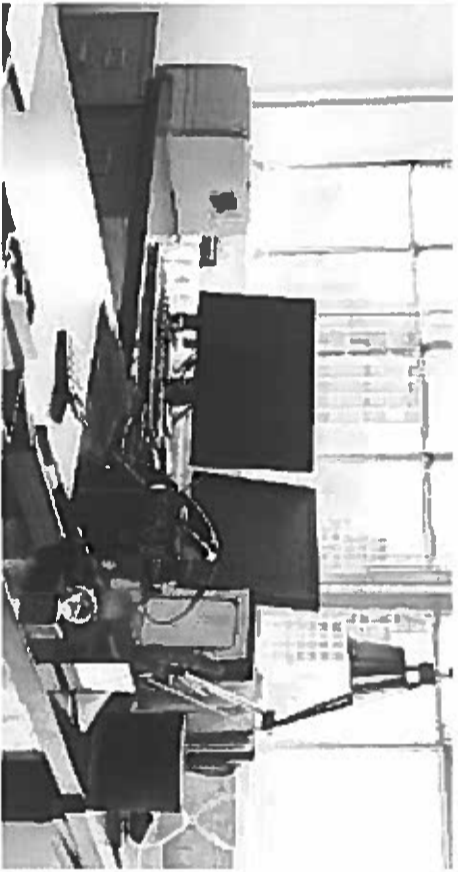


Double glazed windows?

Practical  
Bones  
Think about it

1/1/11?

### Reception/Office



Lighting -  
clear windows  
(or roman shades)  
Energy efficient light bulbs.

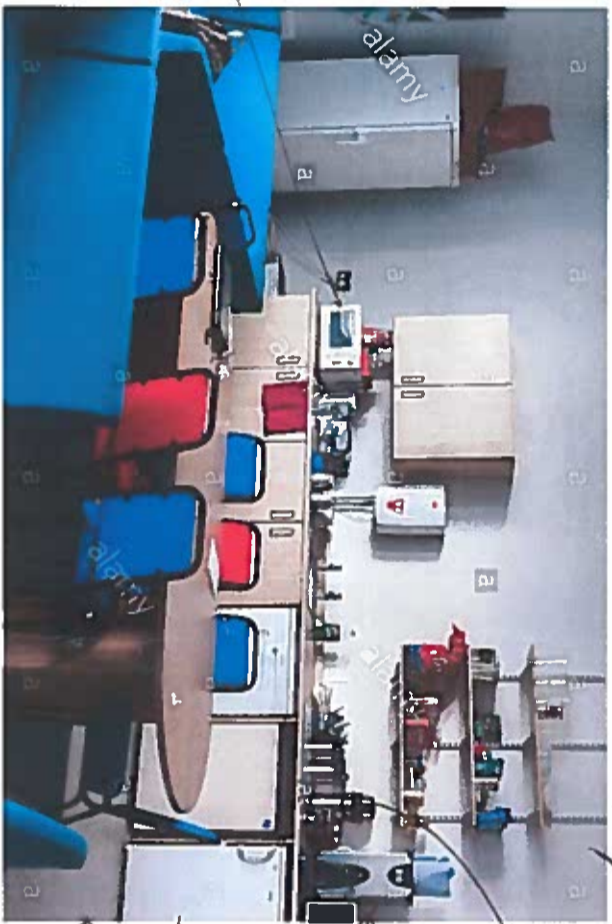
Switch off when not in use! incl. lights.

less paper.

less heating?  
Wear a jumper!  
+ a vest!

Aim for paper free - balance  
against extra cost &  
technology + data  
storage.

# Staffroom



Don't leave on standby

lights automatic switch off if no one inside

different bins for recycling

← how many fridges?

← leave on / switcher off

when centre 2 week shut down?

← dishwasher? — only use when full

← one cup boiler?

← kettle on/off — or "boiler" continually on?

Best practice?  
Flasks only need boils once.

Bulk buy —  
Teabags (Fair trade)  
+ coffee

teapig

plastic free!  
tea bags!

less jars/  
packaging

Don't you can not find  
drive to activity  
or walk!

## Activities



recycled plastic  
kayaks - Park

Dagor

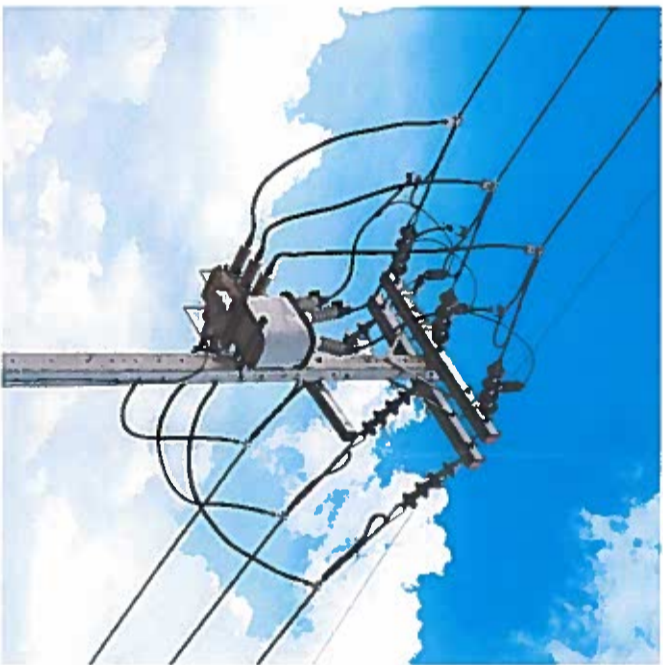
Water based  
Wind based

Utilise on site activities to the  
maximum - avoid driving to activities  
or incorporate activity into a  
Journey eg. walk to it & back again  
or minibuss share?

Clubs!  
Can we  
re-cycle these - or just land fill

Activities?  
environmental impact  
"understanding/opportunity to learn on activity...  
"care" about it...  
an educational opportunity

# Utilities



Spain Panels mandatory

Not allowed in NP due to planning req's. Same for turbines

small ones!

Install Renewables

Bio mass

Ground source heating

water turbines

Not as efficient as Fuel oil for heating. Geology needs to be right.

Packed lunches?  
 Plastic bags?  
 Lunch boxes?  
 Wrapped cake/sandwich?  
 Water bottles

Use less  
 bleach

Natural  
 cleaning  
 products

lids not  
 aligning

No

Sachets  
 Lids

local food sourcing  
 enviro friendly cleaning products

## Kitchen & Catering



- Recycle Cans
- Reduce food miles
- Compost
- No food wrap/lunch boxes
- Veggie food

### Terracycle

- govt for recycling schemes
- Regional collections etc.
- Charity donations.

Packaging for suppliers - remove  
 + request removal in contracts



Revisit/Question  
locations + sites  
used - currently  
closer? is here somewhere

~~Car~~  
shared  
spaces  
| cars  
over  
walls



# Transport

Walk/bike

More water journeys

HVO

Keep water craft at

Best place

is up wind etc

Don't drive if  
you can walk!

No breach

Measured also nice

Environmentally friendly

Waste

use old towels/rags, old clothing  
Full load, lower temperature  
More water

Products

ECOVER

### Cleaning Cupboard



recycle cardboard / return to suppliers

Use refills?

Plastic bin bags?  
Are they all needed?