



# PLANCHA RANGE



JTRH-36IP

| MODEL NO.                              | DESCRIPTION                   |
|----------------------------------------|-------------------------------|
| <input type="checkbox"/> JTRH-36IP-36  | PLANCHA, STANDARD OVEN, 36"   |
| <input type="checkbox"/> JTRH-36IP-36C | PLANCHA, CONVECTION OVEN, 36" |

### STANDARD FEATURES

- Polished 5/8" thick steel plancha plate
- 14 gauge stainless steel grease trough
- 14 gauge stainless steel side and rear splash guards
- Variable size multi-point gas connection—see utility information for details
- Stainless steel oven interior (bottom and sides removable without tools on standard oven)
- Two chrome plated oven racks (wires curled and welded around main frame with no sharp ends)
- Oven control located in cool zone
- Stainless steel gas tubing throughout
- Stainless steel front, sides and stub back
- Stainless steel 6" plate shelf
- Stainless steel adjustable 6" legs
- 3/4" gas regulator (shipped loose, must be installed for proper operation)

### AVAILABLE OPTIONS

- Stainless steel high riser
- Stainless steel double high riser
- Stainless steel high shelf
- Stainless steel double high shelf
- Stainless steel tubular high shelf
- Stainless steel tubular double high shelf
- Common plate shelf with Item(s) Model(s) \_\_\_\_\_
- Cap and cover manifold. Left  Right

### ACCESSORIES

- 6" casters, front two locking (5" diameter wheel)
- 36" flex hose with quick disconnect (3/4" connection)
- 48" flex hose with quick disconnect (3/4" connection)
- 1" gas pressure regulator (specify gas type)
- 1-1/4" gas pressure regulator (specify gas type)



For cooking

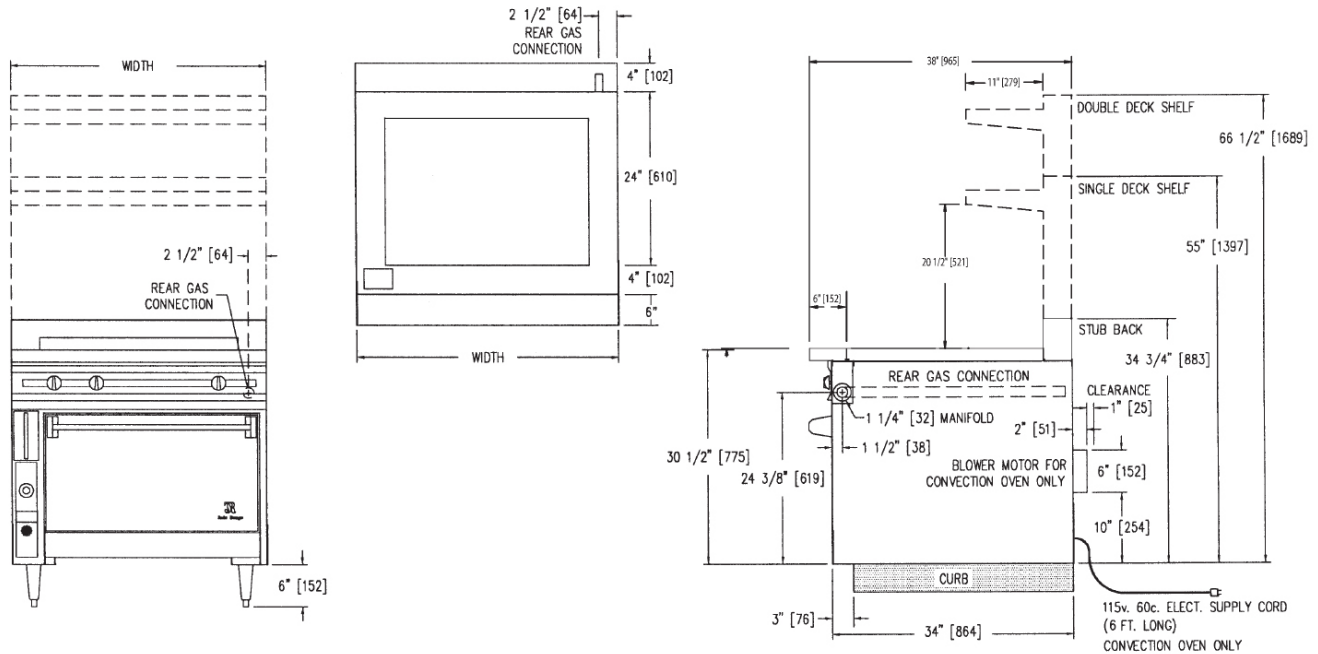
WWW.JADERANGE.COM

JADE RANGE, LLC., A MIDDLEBY COMPANY • 2650 Orbiter Street • Brea, CA 92821 • PHONE: 800-884-5233 FAX: 714-961-2550  
 Note: In line with their policy to continually improve products, Jade reserves the right to change materials and specifications without notice. PRINTED IN USA



# PLANCHA RANGE

## OVEN BASE DIMENSIONS



| MODEL         | BTUS   | WIDTH | DEPTH | HEIGHT  | APPX. SHP. WT. |
|---------------|--------|-------|-------|---------|----------------|
| 36" OVEN BASE |        |       |       |         |                |
| JTRH-36IP-36  | 70,000 | 36"   | 38"   | 36-1/2" | 790 LBS.       |
| JTRH-36IP-36C | 65,000 | 36"   | 38"   | 36-1/2" | 840 LBS.       |

### DESCRIPTION:

Heavy Duty plancha range, with oven below. To be model #JTRH-\_\_\_\_\_ manufactured by Jade Range LLC. Furnished with polished 5/8" thick steel plancha plate, variable size multi-point gas connection, 14 gauge stainless steel grease trough, stainless steel oven interior, two chrome plated oven racks, oven control located in cool zone, stainless steel gas tubing throughout, stainless steel front, sides and stub back, stainless steel 6" plate shelf, stainless steel adjustable 6" legs

### SPECIFY TYPE OF GAS WHEN ORDERING.

### SPECIFY ALTITUDE WHEN ABOVE 2,000 ft.

NOTE: The company reserves the right to make substitutions of components without prior notice.

### UTILITY INFORMATION - GAS:

- Ranges are supplied with 1-1/4" front manifold connection and a 1" or 3/4" capped rear manifold connection. For rear manifold connection, remove cap. Ranges are supplied with 3/4" gas pressure regulator. For 1-1/4" or 1" gas pressure regulator, see accessories. (Specify required front manifold cap and cover when ordering.)
- Required operating pressure:  
 Natural Gas 5" W.C. minimum  
 Propane Gas 10" W.C. minimum  
 14" W.C. maximum

**Note:** This unit must be connected with the gas appliance regulator supplied.

### UTILITY INFORMATION - ELECTRICAL:

- Standard: 115v/60/1 (for other electrical requirements consult factory)



WWW.JADERANGE.COM

JADE RANGE, LLC., A MIDDLEBY COMPANY • 2650 Orbiter Street • Brea, CA 92821 • PHONE: 800-884-5233 FAX: 714-961-2550  
 Note: In line with their policy to continually improve products, Jade reserves the right to change materials and specifications without notice. PRINTED IN USA