



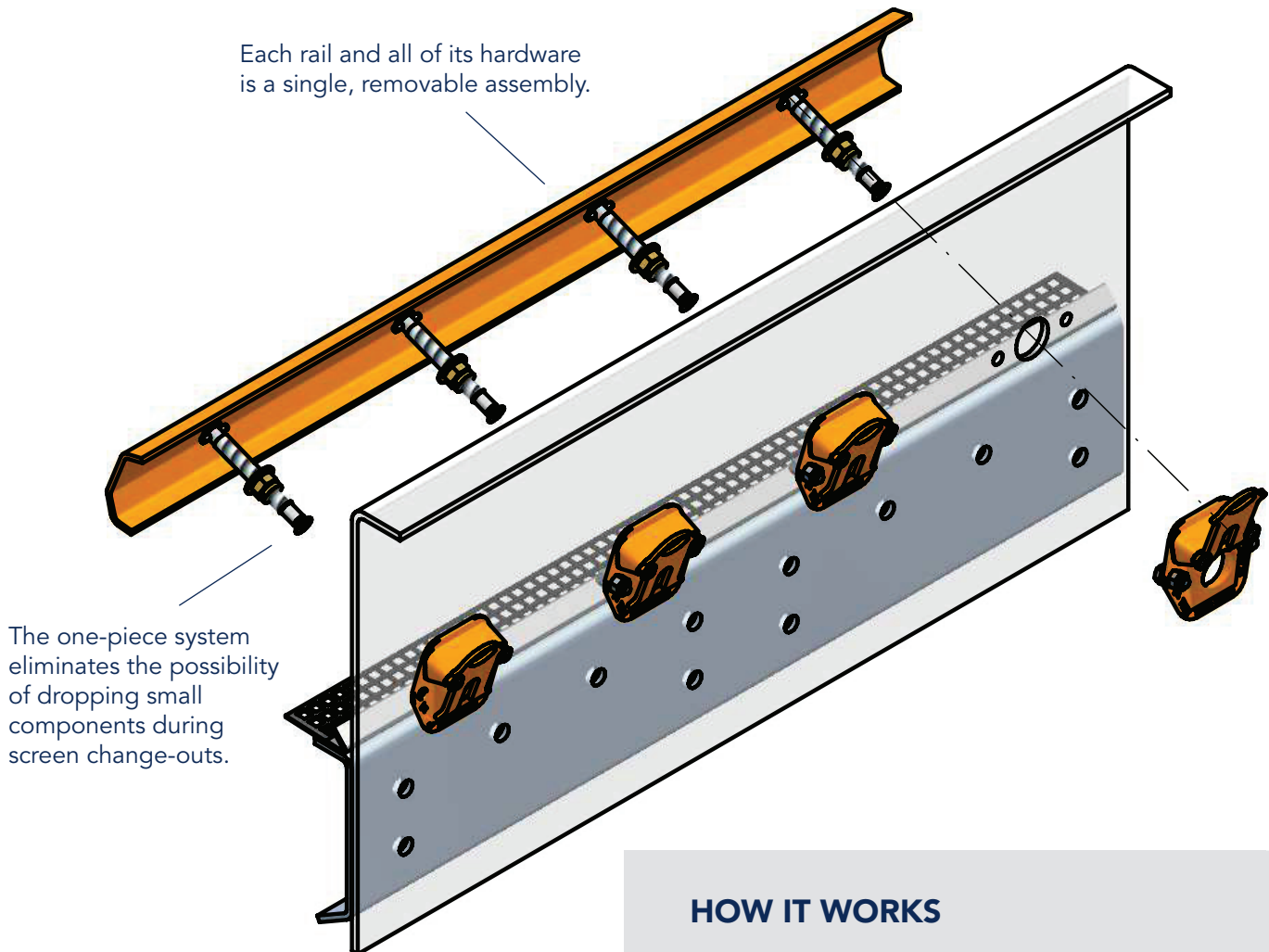
TY-RAIL™ QUICK-TENSIONING SYSTEM



TY-RAIL™ QUICK-TENSIONING SYSTEM

The patented Ty-Rail™ quick-tensioning system **cuts screen change-out time in half**, drastically reducing costly downtime and improving productivity and profit for a fast return on investment.

Ty-Rail is designed to fit Tyler side-tensioned vibrating screens and is standard on each machine. Ty-Rail can also be installed when refurbishing older Tyler machines that have 3-bend tension rails.



HOW IT WORKS

1. Loosen tension bolts and shift locking plates up
2. Lift tension rail out
3. Change screen media
4. Move tension rail back into place
5. Shift locking plates down and tighten tension bolts

Watch the Ty-Rail video demo at:

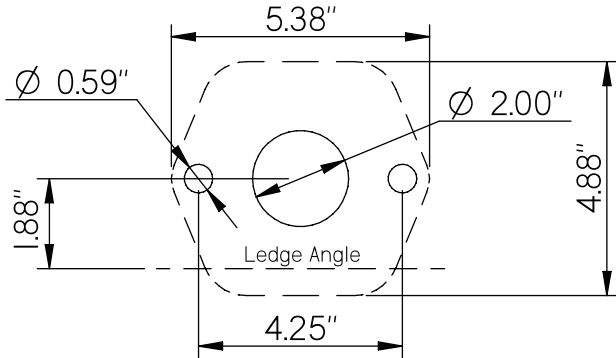
www.havercanada.com/ty-rail

TY-RAIL™ QUICK-TENSIONING SYSTEM

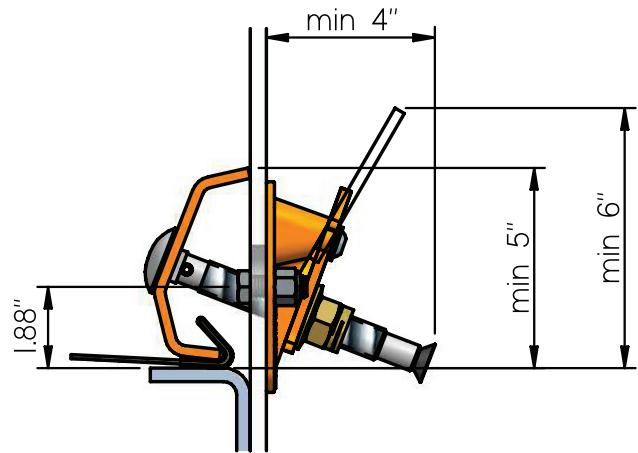
MEASUREMENT GUIDE

To determine if Ty-Rail can be installed on a non-Tyler brand vibrating screen, please consult the measurement guide below.

BOLT PATTERN ON SIDE-PLATE

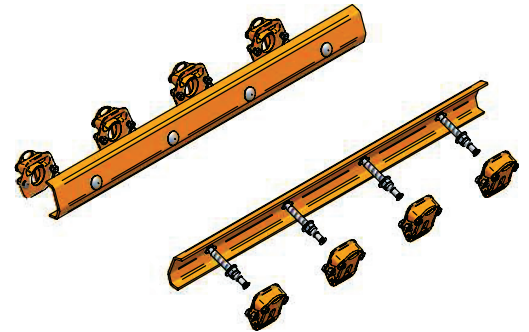
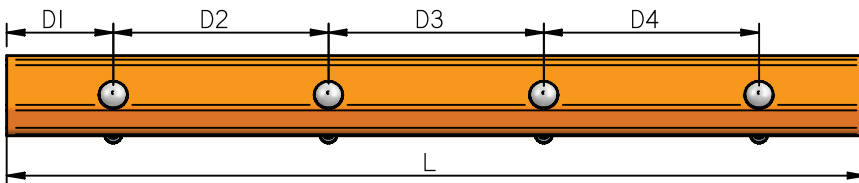


INSTALLATION AND OPERATION CLEARANCE



TY-RAIL ORDERING INFORMATION

Each Ty-Rail kit contains two tensions rails along with all of the bolts and angle boxes required to tension one 4-foot or 5-foot section.



	TENSION RAIL DIMENSIONS						
	L	D1	D2	D3	D4	D5	D6
SCREEN POSITION 1							
SCREEN POSITION 2							
SCREEN POSITION 3							
SCREEN POSITION 4							
SCREEN POSITION 5							
SCREEN POSITION 6							

Standard tension rails are available in 48" and 60" length with 12" spacing.

TY-RAIL™ QUICK-TENSIONING SYSTEM



CALCULATE ROI WITH TY-RAIL

CALCULATE ADDITIONAL TONS PER YEAR WITH TY-RAIL

$$\frac{\text{HOW MANY SCREEN SECTIONS DO YOU CHANGE OUT PER YEAR?}}{\text{DO YOU CHANGE OUT PER YEAR?}} \times 30 = \frac{\text{MULTIPLY BY 30 TO DETERMINE MINUTES SAVED}}{\text{MINUTES SAVED}} \div 60 = \frac{\text{DIVIDE BY 60 TO DETERMINE HOURS SAVED}}{\text{HOURS SAVED}} \times \frac{\text{HOW MANY TONS PER HOUR DOES YOUR OPERATION PRODUCE?}}{\text{DOES YOUR OPERATION PRODUCE?}} \text{TPH} = \frac{\text{ADDITIONAL TONS PER YEAR WITH TY-RAIL}}{\text{PER YEAR WITH TY-RAIL}}$$

CALCULATE ADDITIONAL SALES PER YEAR WITH TY-RAIL

$$\frac{\text{ENTER YOUR ADDITIONAL TONS PER YEAR FROM THE CALCULATION ABOVE}}{\text{CALCULATION ABOVE}} \times \frac{\text{WHAT IS YOUR SELLING PRICE PER TON?}}{\text{PRICE PER TON?}} = \frac{\text{THE TOTAL EQUALS THE ADDITIONAL SALES PER YEAR YOU CAN ACHIEVE WITH TY-RAIL}}{\text{PER YEAR YOU CAN ACHIEVE WITH TY-RAIL}}$$

Calculation assumes one screen change-out takes one hour.

AUSTRALIA

+61 8 6240 6900
info@haveraustralia.com.au
www.haveraustralia.com.au

BRAZIL

Equipment: +55 (19) 3879-9100
 Screen Media: +55 (31) 3661-1371
 Service: +55 (31) 3661-3508
info@haverbrasil.com.br
www.haverbrasil.com.br

CANADA

Alberta: +1 780-447-1528
 British Columbia: +1 778-775-1515
 Ontario: +1 800-325-5993
info@havercanada.com
www.havercanada.com

CHILE

+56 (2) 2307-0440
haverandina@haverandina.cl
www.haverandina.cl

GERMANY

+49 (0) 251 9793-0
info@haverniagara.com
www.haverniagara.com

MEXICO

+52 (55) 5566-9964
haverhbm@havermexicana.com.mx
www.havermexicana.com.mx

SOUTH AFRICA

+27 (0) 11 794 3841
info@haversouthernafrica.co.za
www.haversouthernafrica.co.za

USA

+1 770-760-1130
info@haverusa.com
www.haverusa.com