

PETAL

Cubicle + Washroom Systems

Uniclass
L2226

Cl /SfB

(22.3) X

September 2011

Design that lasts



FOR
EDUCATION

PETAL

Cubicle + Washroom Systems

About Petal	01/10
Colour Range	11/12
Cubicle Systems	13/22
Lockers & Benches	23/24
Washroom Areas for Non-pupils	25/26
Duct and Access Panel Systems	27/30
Vanity Systems	31/34
Technical	35/42

With more than 30 years of service in the education washroom sector we think that few companies are as well qualified as Petal to deliver the sort of product and service that is required for nurseries, schools and colleges. We understand the demands created by the school environment and its users and that is why we know from experience that our products will stay working, month in, year out.

The fact that architects and authorities continue to specify Petal products for education sector washrooms time and time again is testament to our attention to detail, uncompromising quality standards and ability to deliver consistent results on every project.

As always, we remain open to new washroom challenges and our team is ready and willing to go the extra mile to make it happen within your budget and timescale.

Thank you for considering Petal as your partner for washrooms.



Patrick Monaghan
Managing Director



Responding to your washroom needs

To speak to a member of our sales team - call 00800 1981 1981 or email support@petal.co.uk.

www.petal.co.uk

From the outset we will respond to your exact needs -

Service

Our service begins when you refer to our comprehensive website resource or contact one of our Area Managers who each have many years of experience delivering effective washroom solutions for education.

From the outset we will respond to your exact needs from our extensive range of cubicle, wall panelling and vanity systems. Important factors such as budget, privacy options, pupil/student age will be discussed at this stage.

When we understand your unique needs we will make recommendations based on system type best suited to the application. You will then be able to choose colours from the extensive Petal colour selector.

Choice

While cubicles, panelling and vanities are all available in a standard range of formats and finishes, we will not let this be a barrier to supplying any non standard or bespoke requirements which would enhance your project.

Our kids' prints and extensive laminate range offers a wide choice of visual effects. Special digital print images can also be supplied.

Prior to submitting your scheme to our estimating department, our Area Manager will explain the procurement options available, either supply only or our supply and fit package, where expert and fully trained Petal installation teams are on hand to fit your washroom to perfection.

Commitment

Our commitment is to transparent quotations and our estimating department will provide you with prices for each element of the work in your project. Upon receipt of your order, our CAD department will prepare detailed working drawings for the scheme based upon the elements you have chosen.

At every stage of the process, we want you to be delighted with the level of service provided. You will be given a single point of contact who will liaise with you throughout the entire project, starting with the initial site survey right up to final completion.

Supply & Fit

At Petal we always focus on getting the detail right. Having designed and manufactured first class products, we want to ensure that they are installed in a way which will ensure they perform to their full potential.

The Petal supply and fit service is the ideal route to trouble-free washroom installations. Our expert fitting teams are thoroughly trained on Petal systems and are experienced working in all types of potential applications from five star spas to year five schools.

Work starts when our team takes accurate measurements of the site and looks for early signs of any unusual features which might cause unnecessary challenges later in the project.

Each scheme is carefully drawn and documented, continuing as a bespoke project through our design and manufacturing departments before co-ordination of components ready for dispatch to the specific fitting team allocated to the job.

Health and safety is a top priority while on-site to ensure that the project progresses quickly and safely with the minimum impact on other teams within the building.

Through our management of the project through to final hand over we remove risk and save time for the client.

Sales & Support

Whether you are choosing product, specifying performance, installing the washroom or are responsible for all of these, we are here to help.

Contact us by phone or email to send us details of your project or arrange a personal visit from one of our customer service team.

We will quickly respond to your enquiry and if necessary, visit you to discuss your requirements and make recommendations from our comprehensive range of washroom systems.

Our internal technical and estimating team will create an estimate and specification for your project including clear lead times based on your material selections.

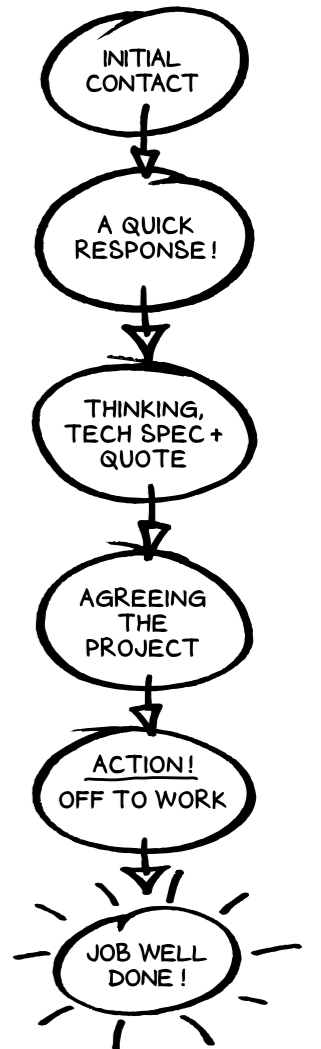
If necessary we will return to discuss our proposals in detail and take note of any additions or revisions that you wish to make to ensure you can achieve your objectives on both performance and project budget.

On agreement of the quotations we will instruct you on delivery and schedule either installation with Petal's expert team or delivery to your chosen contractor.

Where Petal is chosen to supply and install, we will closely manage the project through to completion and sign off.

Nationwide Coverage

Petal works with a network of fabricators throughout the UK and Ireland who specialise in all market sectors. This ensures geographical continuity and capacity and allows Petal to offer a nationwide supply and installation service.



Total Washroom Solutions for Nurseries, Schools and Colleges

Delivering well planned and hard working education washroom projects requires a co-ordinated approach which is something we excel at. Our approach, backed up by our extensive range of products, ensures we can offer clients options at each stage of the specification process.



Cubicles
Choose from our selection of cubicle ranges which cover all design, function and budget requirements for Education applications, backed by our 10 year warranty. See Page 13.



Duct and Access Panel Systems
Our range of wall duct and access panel systems, can be specified according to material and colour choice based on aesthetic preferences and performance requirements. See Page 27.



Vanity Systems
Practical hard wearing vanities are required in an education environment. Petal provide a range of options. See Page 31.



Lockers
Our Action range of lockers are suitable for the extreme conditions found in sports changing and shower and pool areas in schools and universities. See Page 24.



Benches
A range of changing bench options are available with a choice of slat materials. See Page 23.



✓ PRIVACY
✓ DURABILITY
✓ STRENGTH



Experience

With over 30 years of designing, manufacturing and installing these products, we think we have learnt a lot about what works and what does not in a busy modern washroom.

This has led us to adopt a rigorous testing regime, structured to create some of the most extreme conditions that our products are likely to encounter.

This provides the specifier with an extra degree of confidence, safe in the knowledge that by choosing a Petal product, every aspect of the design has been checked and tested to ensure that the client will experience faultless performance.

Rigorous Testing

Here at Petal, nothing is left to chance! We test continuously to ensure that all our components will perform to the highest standards. Hinges, indicators and fixings are all tested to ensure that they will work year after year.

With the collaboration of a local university, which also certifies our results, we have devised an impact testing procedure for our cubicle systems.

This test replicates the most extreme impacts likely to be inflicted by washroom users and which can seriously challenge the structural stability of the cubicle system.

A programme of independent testing of Petal cubicles has been established to validate the ability of the product to withstand even extreme personal attack. These tests simulate large soft body impacts of up to 134Nm impact energy. Tests employing a 50kg impactor are carried out at a variety of likely impact points - kick height, shoulder charge etc. The Petal product is found to withstand tests without failure and when measured against British Standard BS5234-2:1992 it is classified as suitable for Severe Duty Applications.

Highest Standards

At Petal we do not make compromises, so you may notice that we do not offer rock bottom prices.

The reason for this is simple!

From our long market experience, we frequently see evidence of rock bottom performance from others' failed washroom products which were supplied to a price but neither designed nor built to last.

Since we take care with the hidden details of our washroom systems, the final results are impressive. Wherever possible, we use full length channels instead of patch fittings as these provide additional stability, protect panel edges and leave the washroom system easier to clean.

We use only the best materials available and we never compromise on ideas or solutions which we know will not survive the test of time.

Our tests go further, because we understand how things are in the real world, in the nursery, school or college. We have created tests to push our products further than other manufacturers.

That's why we can say with confidence -

DESIGN THAT LASTS

Our commitment to quality is confirmed by our ISO 9001:2008 certification.



Outstanding Performance as Standard

10 Year Warranty



Design that lasts

Because we understand that education is one of the worlds' most demanding applications for washrooms we design products specifically for this market, rather than just repackage our existing ranges.

Trends change and research reveals new ideas but one thing that doesn't change is the value of our experience in this sector.



We think we are top of the class when it comes to providing smart washroom solutions for projects in the education sector. But then we have been completing installations in schools for 30 years so we should know a thing or two about it by now. **That's why our ranges carry a 10 year warranty.**

Detailing

The detailing of hardware is child friendly, so our fittings and profiles are rounded, reflecting the needs of the users in the education sector. It is our priority that cubicles should deliver maximum service with minimum requirement for repair or maintenance. To ensure longevity we use three, not two hinges, which have been proven as being 100% reliable during testing.



Panels

We use only Compact Grade Laminate (CGL) panels in our Education ranges because we know they will cope with all the water, heat and impact that they are likely to encounter in a busy education washroom. The polished edges of the panels are self sealed and so offer no opportunity for degradation through wear and tear.

Construction

Every Petal cubicle for the education sector has practicality at its core. Our aluminium profiles are both safe and practical in use with full length engagement at both panels and walls. In our semi framed ranges, strength is provided through the use of a continuous structural headrail which interlocks with the pilaster panel to give added integrity to the system.

Further strength is provided through the full length leg channels with integral foot design ensuring the most secure floor anchorage. All these features deliver considerable long lasting benefits in use. Experience tells us that an extremely stable cubicle is more resistant overall to damage.

Colour Range

The Petal Colour Collection - more than 50 standard options including colours, prints and wood effects.

Go stylish, soft, natural, contemporary or upbeat.
Where will you take your washroom design?

CGL

Compact Grade Laminate is an extremely high performing waterproof material suitable for use in the most demanding washroom environments.

The CGL panels are finished with soft radiused edges and panel corners are also radius curved for user comfort.



All colours are approximations only. Please contact Petal for actual samples.
All laminates have a Matte 58™ surface finish.



Cubicle Systems

Selecting the right cubicle system

Price Level
Price levels are an indication based on standard size cubicles in standard materials.

Privacy
Floor to ceiling (FTC) options offer enhanced privacy.

Usage
HPL and Veneer cubicles are suitable for dry environments only. Choose CGL and Glass for use in wet environments.

Using this product guide, please follow the selection guidelines within each of the product sections.

Nursery	Wet/Dry Environment	Price Level	Material	Cubicle	Shower	Privacy
	Child Friendly with Headrail	2	CGL	Chico	-	Std
	Infant Friendly - Freestanding	2	CGL	Beep	-	Std
Primary & Secondary School	Wet/Dry Environment	Price Level	Material	Cubicle	Shower	Privacy
	Child Friendly with Headrail	2	CGL	Chico	-	Std
	Standard Cubicle	2	CGL	Thor	Yes	Std
	Full Height Cubicle	3	CGL	Apex	Yes	FTC
University	Wet/Dry Environment	Price Level	Material	Cubicle	Shower	Privacy
	Full Height Cubicle	3	CGL	Apex	Yes	FTC
	Standard Cubicle	2	CGL	Thor	Yes	Std
		3	CGL	Fin	-	Std / FTC
Staff	Wet/Dry Environment	Price Level	Material	Cubicle	Shower	Privacy
		2	CGL	Duo	Yes	Std
		3	CGL	Fin	Yes	Std / FTC
		3	CGL	Arc	Yes	Std
		4	CGL	Line	Yes	Std
Sports	Wet/Dry Environment	Price Level	Material	Cubicle	Shower	Privacy
	Public Pools	4	CGL	Action	Yes	Std



SUITABLE FOR NURSERIES

A fun, bright approach to the provision of a welcoming infant washroom environment featuring low level panels scaled to allow both child privacy and supervision of users by carers. Child friendly finishes include radiused edges and rounded corners on compact laminate panels while striking graphic options complete this ideal nursery solution. Beep is designed to last with a secure floor fixing and continuous wall channel making this a practical freestanding system.

Beep

10 Year Warranty



Pictured above - Beep profile detail

Suitability
Nursery use, wet environments including showers

Price Level
2

Material Option
12mm CGL

Pilasters
Radiused edge 12mm CGL

Colour
Full Petal CGL range, including graphic prints

Head Clearance Height
Fully clear

Overall Cubicle Height
Fully clear

Privacy Design
150mm floor clearance

Doc M Compliance Options
Inline inward and outward openings
Enlarged and ambulant
Emergency release indicator

Choice and Compliance

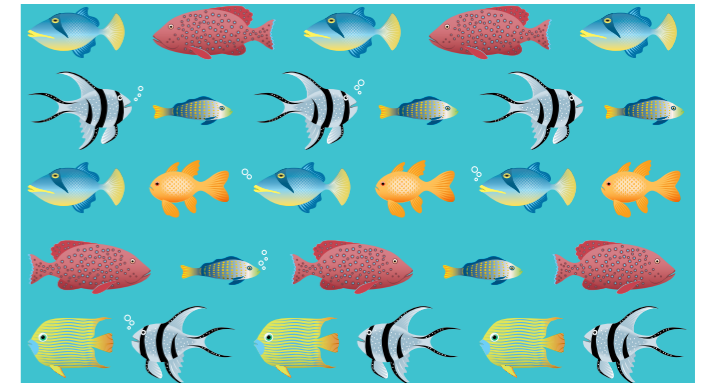
Petal offers a wide colour choice including fresh and bright Compact Grade Laminates with the additional option of fun, colourful graphics that can be specified on any of the education ranges.

In addition, cubicles can be specified to meet all relevant standards including LRV index and special access requirements.

Fun, child friendly finishes.



Daisy



Aqua



Stars



Numbers



Jungle



Doodles

SUITABLE FOR NURSERIES, PRIMARIES + SECONDARIES

Child friendly, attractive and practical for supervisory teachers and carers, Chico can be configured in 4 sizes accommodating children from the under 5's up to 11years old in four transitions. Chico features an integral headrail for exceptional stability and is manufactured throughout to withstand constant daily use. The system is suitable for all wet and dry nursery and school applications. A full range of compact grade laminates is available together with our colourful graphic options which can be combined in cubicle and wall panels for maximum fun.

Chico

10 Year Warranty



Pictured above - Chico profile detail

Suitability
Nursery, primary and secondary use, wet environments including showers

Price Level
2

Material Option
12mm CGL

Pilasters
Radiused edge 12mm CGL

Colour
Full Petal CGL range, including graphic prints

Head Clearance Height
1950mm

Overall Cubicle Height
2000mm

Privacy Design
150mm floor clearance

Doc M Compliance Options
Inline inward and outward openings
Enlarged and ambulant
Emergency release indicator

SUITABLE FOR PRIMARIES, SECONDARIES + UNIVERSITIES

A full height cubicle with stylish inline aluminium pilasters which offers a full privacy washroom option ideal for all educational applications. Apex is an extremely robust system featuring full channel fixings at walls and floor, compact grade laminate and fully tested fittings designed to last in a challenging wet or dry environment. Equally appropriate in a staff room or sixth form centre the aesthetics of the system can be substantially altered through choice of laminate specified.

Apex

10 Year Warranty



Pictured above - Apex profile detail

Suitability
Nursery, primary, secondary and university use, wet environments including showers

Price Level
3

Material Option
12mm CGL

Pilasters
Radiused edge 12mm CGL

Colour
Full Petal CGL range, including graphic prints

Head Clearance Height
1950mm

Overall Cubicle Height
Height optional - max. floor to ceiling

Privacy Design
50mm floor clearance

Doc M Compliance Options
Inline inward and outward openings
Enlarged and ambulant
Emergency release indicator

SUITABLE
FOR PRIMARIES,
SECONDARIES +
UNIVERSITIES

Built to withstand the rough and tumble of the school environment Thor is a proven semi framed cubicle system guaranteed to meet the grade in any challenging environment. Strong aluminium profiles are matched with durable compact grade laminates and tamper resistant fixings with three hinges per door to ensure the maximum resistance against either wear and tear or vandalism. Thor has been designed and engineered to last. Specify index compliant colour schemes from our range of child friendly fresh and bright solid grade laminates. Thor is also available in a shower cubicle configuration.

Thor

10 Year
Warranty



Pictured above - Thor profile detail

Suitability
Primary, secondary and university high use location, wet environments including showers

Price Level
2

Material Option
12mm CGL

Pilasters
Radiused edge 12mm CGL

Colour
Full Petal CGL range, including graphic prints

Head Clearance Height
1950mm

Overall Cubicle Height
2000mm

Privacy Design
150mm floor clearance

Doc M Compliance Options
Inline inward and outward openings
Enlarged and ambulant
Emergency release indicator

Thor Changing Configuration



Thor Showering Configuration



SUITABLE FOR UNIVERSITIES

Fin's profiled aluminium pilasters make a strong architectural statement, guaranteed to bring a sense of quality to any washroom. This highly adaptable inline system accommodates almost every possible configuration with style including floor to ceiling installations, inward and outward openings plus selectable performance for wet or dry applications.

Fin complements a range of finishes making it a popular choice for all types of public applications. While full of features, Fin's simple design principle has been engineered as a mid price range option making it a realistic specification for a wide range of projects.

Fin

10 Year Warranty



Pictured above - Fin profile detail

Suitability
Universities and staff
HPL - General use, dry environments
CGL - General use, wet or dry environments

Price Level
3

Material Option
20mm HPL
12mm CGL

Pilasters
Elliptical anodised aluminium / HPL or CGL

Colour
Full Petal HPL & CGL range

Head Clearance Height
1955mm

Overall Cubicle Height
Option 1 - 2075mm
Option 2 - floor to ceiling

Privacy Design
150mm floor clearance
Full privacy floor to ceiling

Doc M Compliance Options
Inline inward and outward openings
Enlarged and ambulant
Emergency release indicator

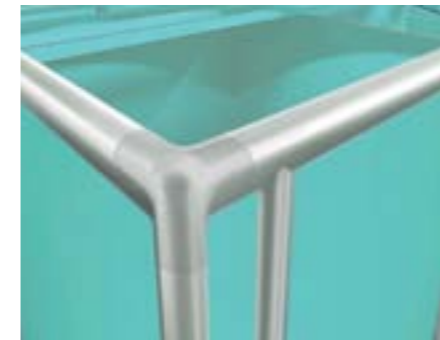
HIGH PERFORMANCE SPORTS CHANGING

Built for all day service in the most demanding pool and sports and changing applications. Action is a fully framed self supporting system which will perform in linear and island configurations while withstanding the extremes of use and atmosphere experienced in education and sports facilities. The fully integrated frame and headrail system with co-ordinated cappings and fittings have been designed with all installation practicalities and user comfort in mind.

The Action range is ideal for all high traffic areas including public, educational and sports club facilities. Petal also offers lockers for use in changing facilities. Action is a fully versatile system with possible uses as changing, showering or WC cubicles. The fully framed structure will accommodate all the applications found in a modern sports facility including walk through cubicles and family changing layouts.

Action

Action's CGL panels are more than capable of withstanding the constant wet environments and daily cleaning schedule



Pictured above - Action profile detail

Suitability
CGL - Demanding, harsh use, wet or dry

Price Level
4

Material Option
12mm CGL

Pilasters
50mm circular satin aluminium posts/ CGL

Colour
Full Petal CGL range

Head Clearance Height
1956mm

Overall Cubicle Height
2006mm

Privacy Design
150mm floor clearance

Doc M Compliance Options
Inline inward and outward openings
Enlarged and ambulant
Emergency release indicator



Action lockers & benches



Benches

Action bench solutions comprises a range of sturdy frame options which can be cleverly configured in different ways to maximise the space available.

Options include -

- Self supporting wall mounted
- Leg supported wall mounted
- Freestanding
- Back to Back
- Coat rails may be stand alone or integrated

Each standard frame is fabricated in strong mild steel section and painted in a light grey powder coated finish making them suitable for use in wet or dry changing rooms.

Action benches are manufactured with waterproof Compact Grade Laminate in plank or slat formats, each with smooth edges and available in a wide range of sporting colours. Wooden slats in selected hardwoods are available.



Lockers

Action lockers are manufactured with 10mm CGL doors, full height aluminium bodies, and high impact polystyrene plastic tops, shelves and bases for lifelong service and are available in a comprehensive range of sizes and layouts. Also, locker doors are available in 10mm toughened glass at an additional cost.

Particular care has been taken with the specification and selection of the hinge mechanism which operates perfectly with the CGL door. All door edges are radiused and polished. There is a wide range of lock options available, including cam locks, coin / token return or retention, hasp locks, card, digital etc. The Petal technical department will guide you through all the different options before you make your final selection.



Washroom systems for Non-Pupil areas



Every educational establishment will have facilities dedicated to both teaching and administration staff. Petal offer a range of systems which will create quality working staff environments and are suitable for these non pupil areas. These additional ranges offer differing levels of privacy and with a choice of fifty colours and effects it is possible to differentiate staff areas from pupil and student washrooms.

Please refer to the Petal website for full details of these and other ranges. www.petal.co.uk



Duct and Access Panel Systems

Petal offer a fully bespoke duct panelling service including pre-plumbed options that go beyond just matching our cubicle systems. Our flexible manufacturing processes and material options allow us to produce practical solutions that deliver the performance you need in your washroom.

The demands of an each washroom will be different. At Petal we focus on design and performance, matching the materials and panel configurations that will best meet the special needs of each project.



For panelling in all pupil areas and wet environments we recommend only the use of the Petal P300 system with panels manufactured from Compact Grade Laminate (CGL).

For installations in dry, non pupil areas such as staff or administration washrooms we also recommend P100 or P200 systems with High Pressure Laminate (HPL).

Panel Options



P100 High Pressure Laminate (HPL)

20mm thick panels finished with a straight edge finished in matching laminate giving a sharp clean appearance.

Suitable for most dry areas.

Veneers may also be specified.



P200 High Pressure Laminate (HPL)

20mm thick panels finished with post formed edges on the vertical for a softer aesthetic feel.

Suitable for most dry areas.



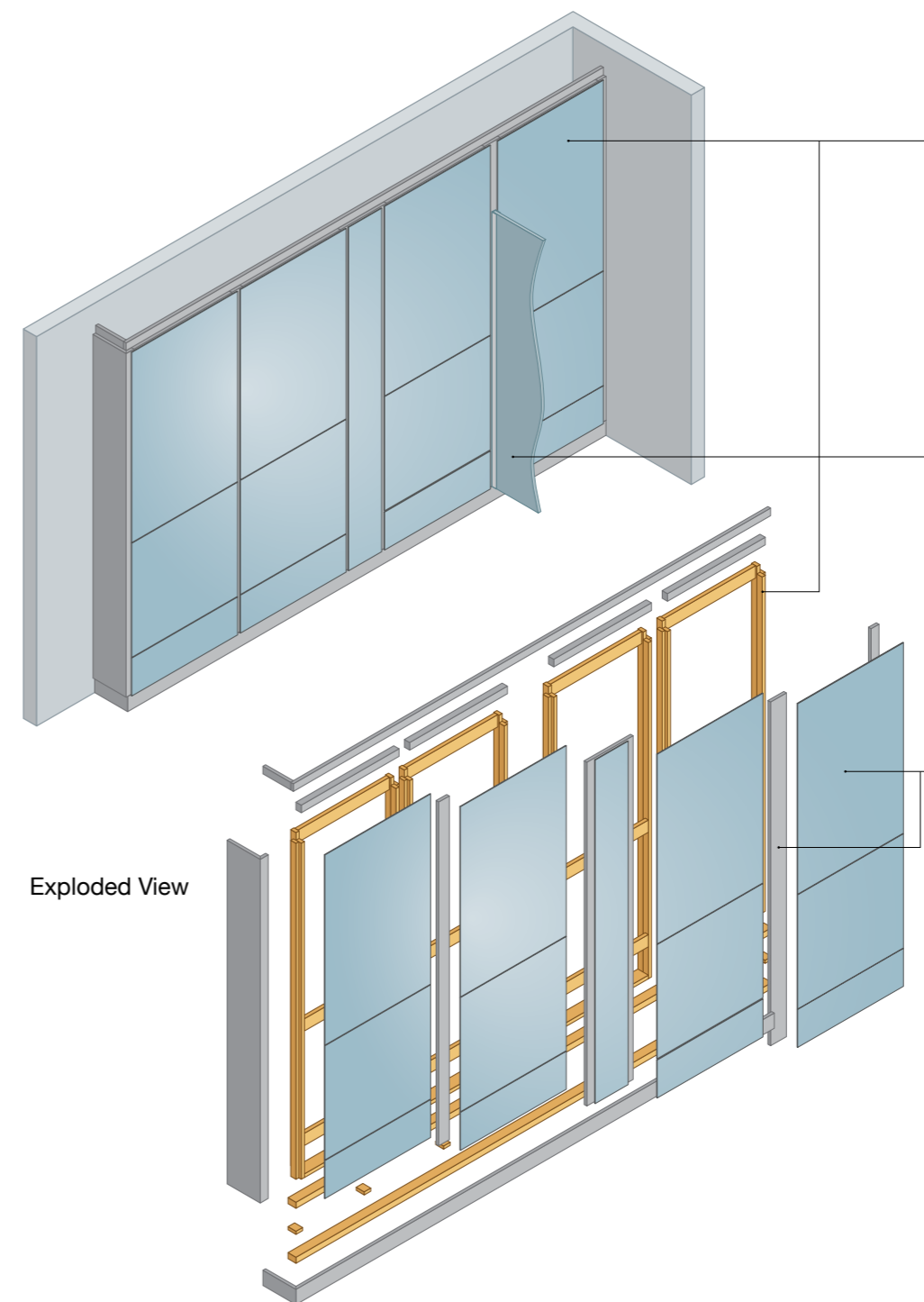
P300 Compact Grade Laminate (CGL)

12mm thick high performance panelling with soft radiused edges for use in wet environments, high wear areas or those requiring high levels of hygiene and robust cleaning regimes.

The Petal duct panel system is highly versatile and can accommodate all wall and ceiling configurations. Our technical department will translate your washroom plans into a detailed duct panel system which will enhance any washroom environment.

Petal offer a fully bespoke service for duct panels so every system is produced in our workshops for efficient trouble-free installation on-site by our expert fitting teams.

Panel Overview



Robust factory assembled plywood sub-frames form the support for the specified flash gap and face panel materials. This results in an extremely versatile solution which can accommodate the specific plumbing layout of each project.

A variety of practical panel fixing methods are available and will be discussed when the sanitary ware and plumbing choices are confirmed with details of any special requirements such as hinged or locked access etc.

Aesthetically, a wide range of panel materials, laminate finishes, panel and flash gap combinations are available and particular suitability can be discussed with our technical team.

Exploded View

Vanity Systems

Advances in materials and choice of sanitary ware means that the options for vanities have never been greater. With Petal's advice and guidance you can choose carefully to ensure that both the aesthetic appeal and the functionality of your washroom will be achieved.

Surface Finishes



High Pressure Laminate (HPL) is the entry level material for vanities. Suited only for surface mounted washbasins it can be produced with post formed down-stands and up-stands for a practical and serviceable solution.



Compact Grade Laminate (CGL) is a tough and totally waterproof alternative to HPL. Suitable for areas of hard use or vandal exposed washrooms.



Solid Surfacing is a unique hard-wearing material which can be produced in many different formats including integral basins and troughs all with seamless joints. Ideal for washrooms where style is an important factor, solid surfacing is available in many colours and finishes including stone effects.



Stainless Steel provides an interesting option in schools with outstanding damage resistance and long term value. It provides high levels of hygiene in a cleaning regime and resists staining while the bright surface maintains a modern and attractive appearance. The vandal resistance may be an important feature in remote washrooms or sports changing.

As a bespoke washroom provider Petal can produce vanities to our client's own designs from any of the wide range of materials available. For many projects however, our range of Petal Vanity designs will meet and exceed our client's requirements. Vanities may be ordered in conjunction and co-ordinated with the complete washroom.

Petal washroom solutions include cubicles, ducting and pelmets. In applications such as nursery or schools the vanities are sized appropriately. For sizing details see pages 41/42.

Vanity Types



Inset Basin

Inset basins can be set down into any material including HPL for practical and cost effective applications.



Semi Recessed

Inset surface mounted basins may be semi recessed exposing the front of the basin for an alternative style. Any of the material options may potentially be used in this format.



Under Counter

Basins may be fitted under counter creating a clean counter top finish. This option is best suited to solid surfacing or CGL materials. Not available with HPL vanity tops.



Trough

Trough design wash basins are available in both solid surfacing and stainless steel. Options include top mounted or wall mounted taps with either single or multiple outlets to reduce flood risks.

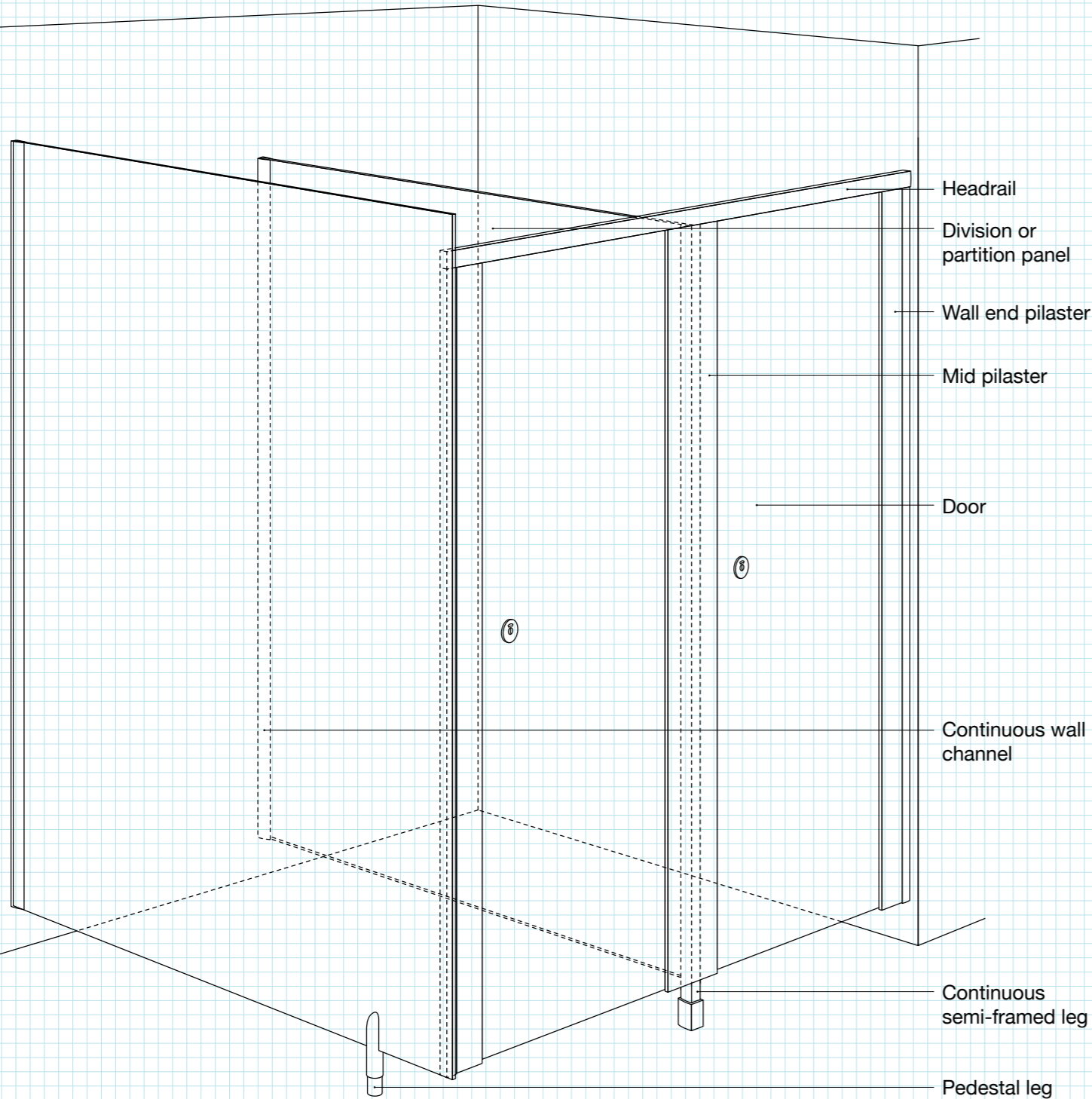


Technical

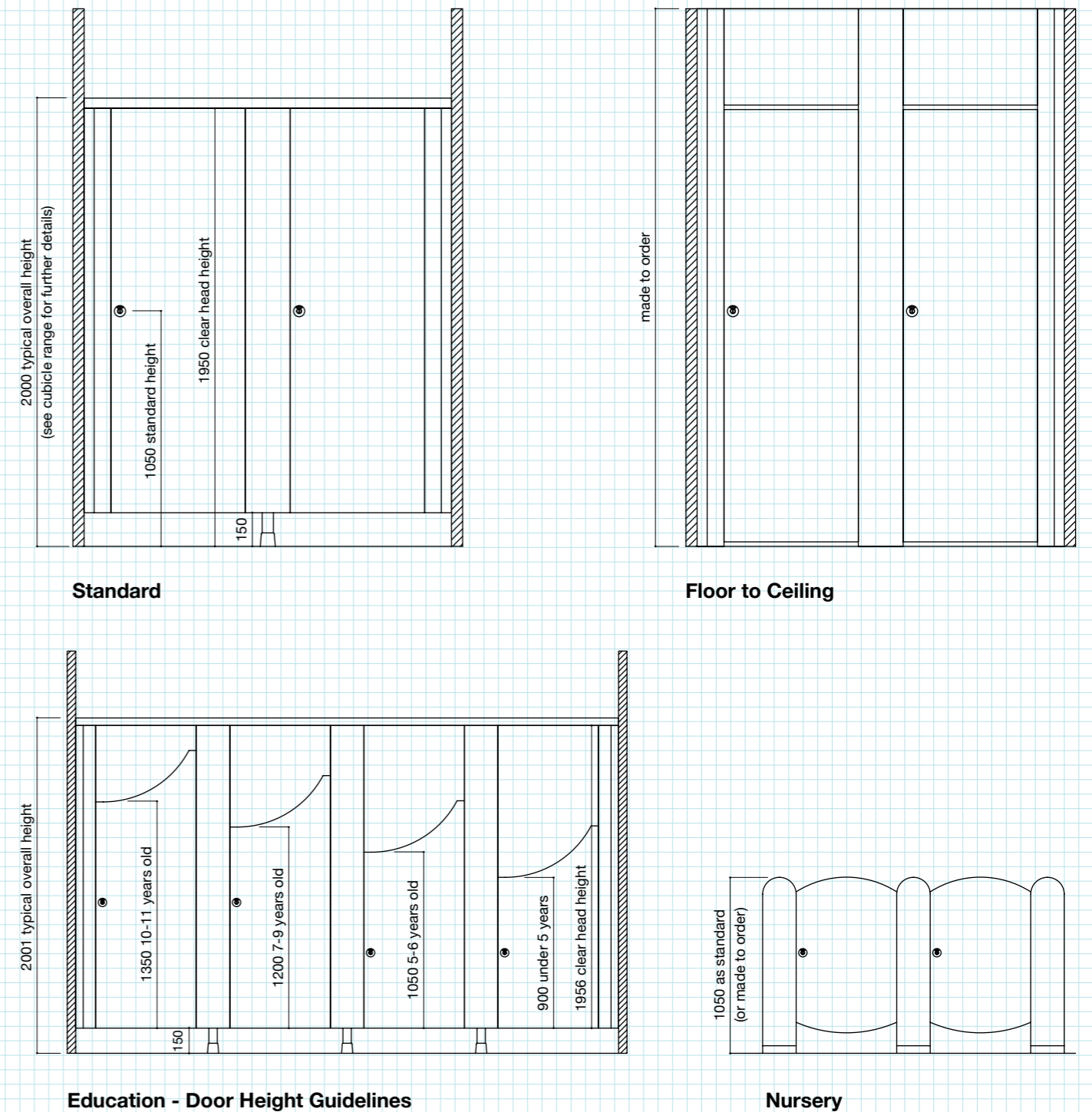
The Petal sales team and technical advisors are available to offer helpful advice at every stage of your project. To help you plan and discuss your project with us we have illustrated some typical cubicle layouts with details on components and sizing.

You can also download these drawings from our website www.petal.co.uk

Cubicle Elements



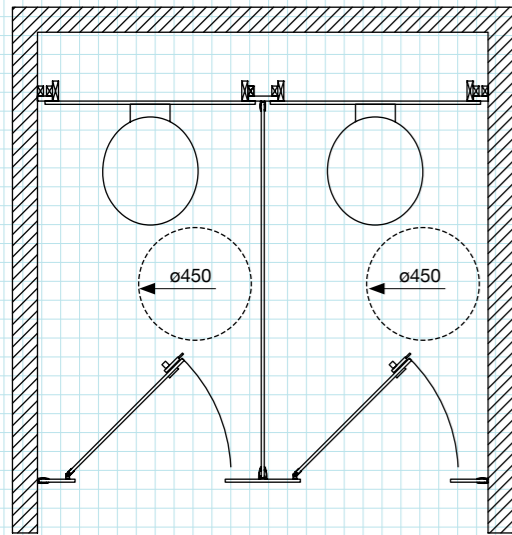
Cubicle Heights



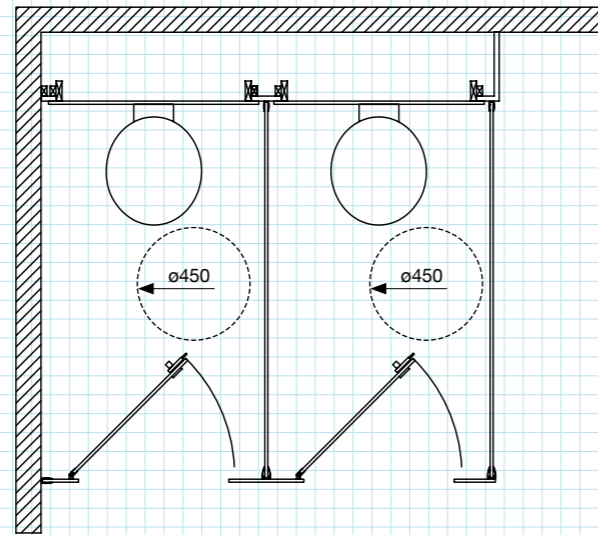
The cubicle layout in your project will be dictated by the available space and the conditions required for Disability Discrimination Act (DDA) compliance. Please discuss these options with our team of advisors who will offer practical advice to help you design the optimal washroom layout.

You can also download these drawings from our website www.petal.co.uk

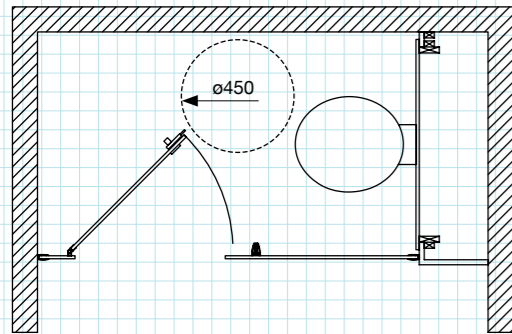
Cubicle Layouts



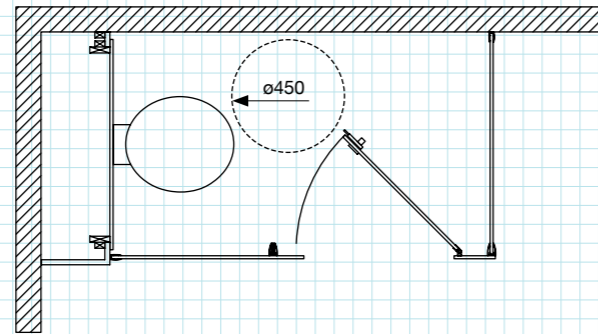
Between walls



Against walls



Panel and door inline between walls

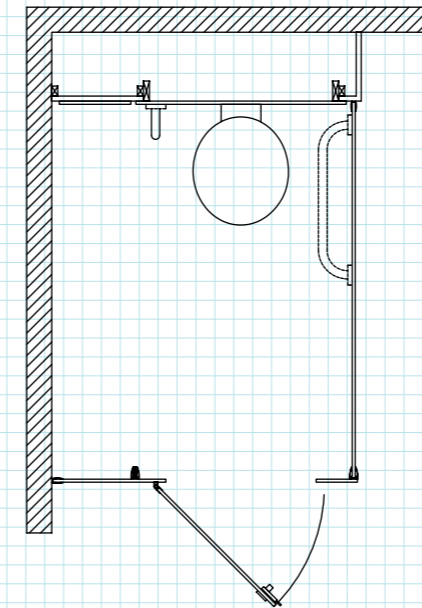


Panel and door inline against walls

Compliance with the DDA is an important factor in any washroom design. The following guidelines are provided to highlight the basic requirements of the legislation which should be addressed by your design professionals engaged on each project. Designers should also refer to DDA requirements for 30 point LRV difference in materials selected for use in cubicle systems.

In each case, a properly specified Petal cubicle system will comply with the DDA requirements.

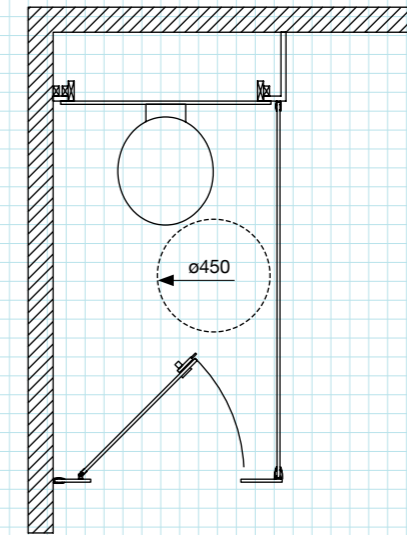
DDA



Enlarged

Washrooms containing four or more cubicles must contain at least one enlarged cubicle.

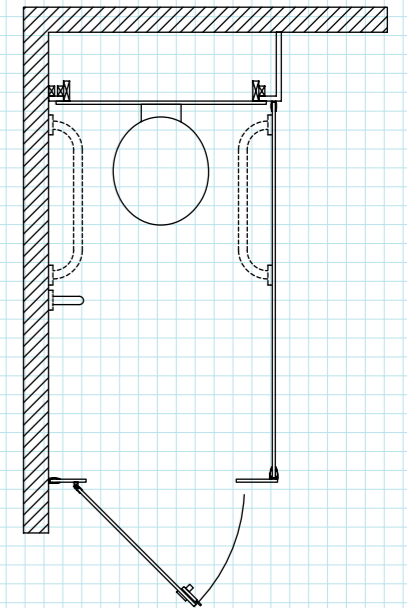
Enlarged cubicles must be a minimum of 1200mm wide and must have an outward opening door. Internal details must include both vertical and horizontal grab rails.



Standard

Each standard cubicle must accommodate a 450mm diameter manoeuvring space between the arc of the inward opening door, WC pan and the internal side wall or division panel.

Petal recommends a minimum cubicle depth of 1500mm to facilitate this minimum manoeuvring space requirement. The use of outward opening doors may enable compliance in projects where cubicle depth is restricted.



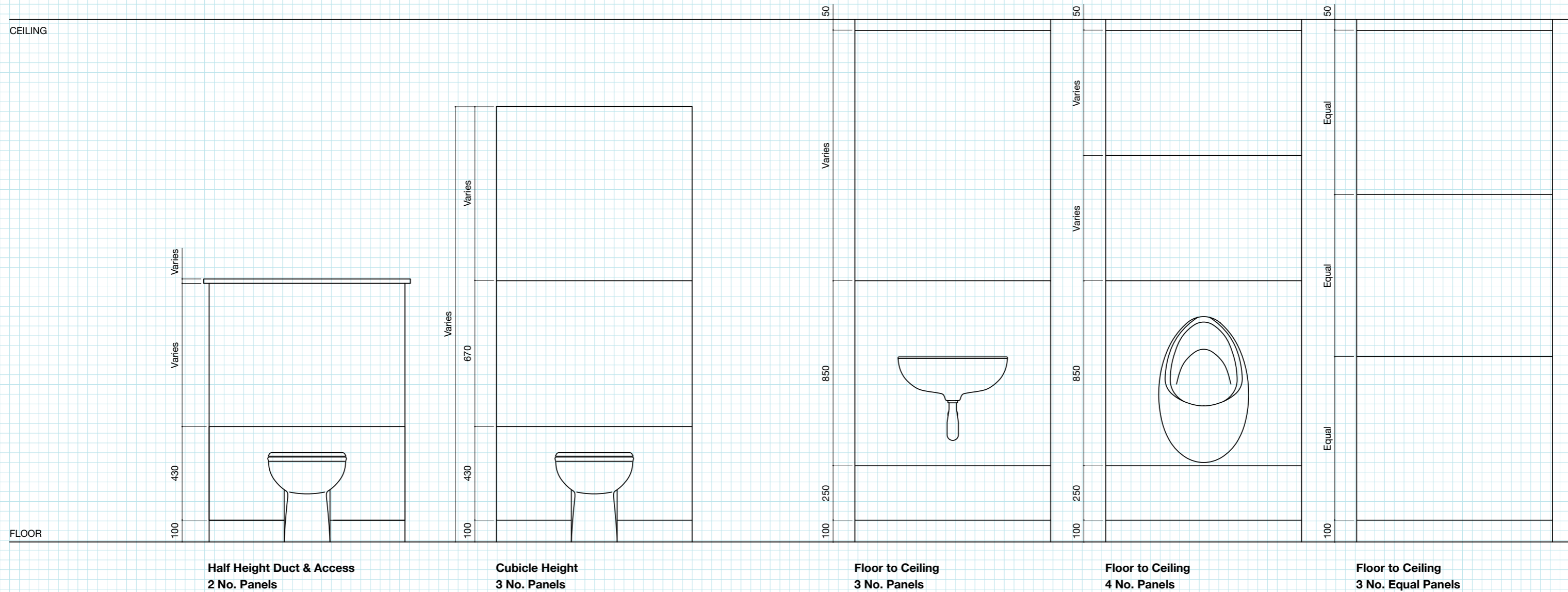
Ambulant

In each same sex washroom there must be at least one cubicle to meet ambulant disabled needs. In the case of only a single cubicle in the washroom then it must be ambulant. The ambulant cubicle must include an outward opening door and be equipped with the DDA required internal grab rails.

A wide range of material and performance options are available and we are able to advise which combination will be best suited to your project. The Petal technical team will provide detailed drawings of each panel system project ensuring trouble-free installation on-site.

You can also download these drawings from our website www.petal.co.uk

Duct and Access Panel Systems



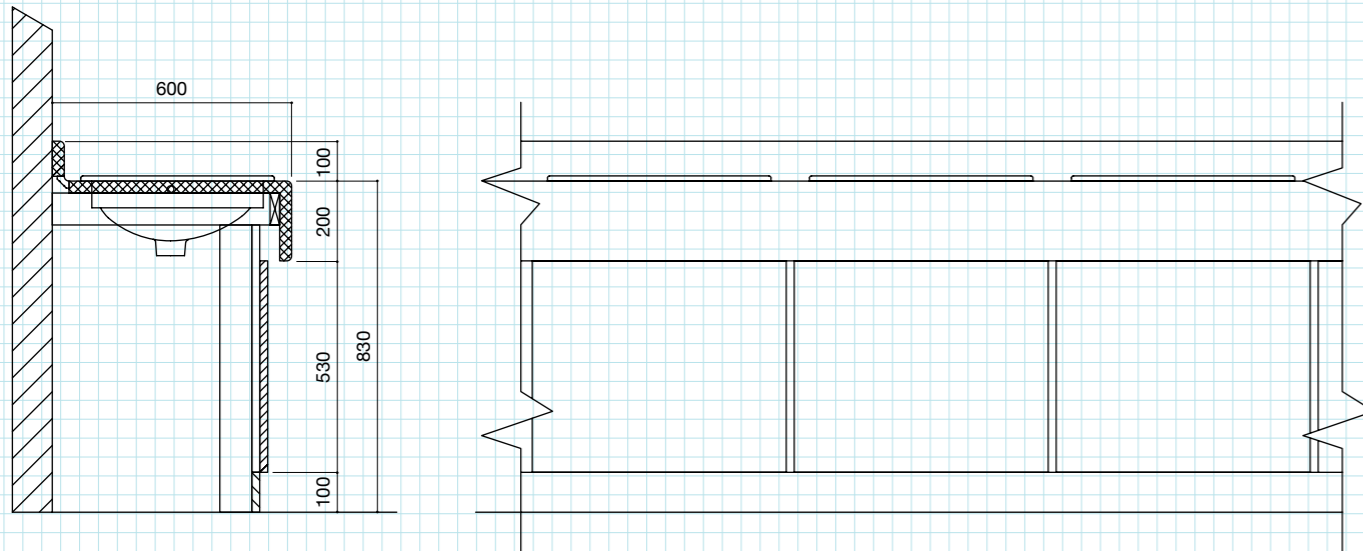
Petal has developed a robust technical solution to accommodate the diverse range of vanities which can be specified in each washroom. Our technical team will provide a bespoke solution which ensures appropriate fixing details are provided in each washroom design.

Please refer to our sales team to discuss your exact requirements.

Vanity Systems

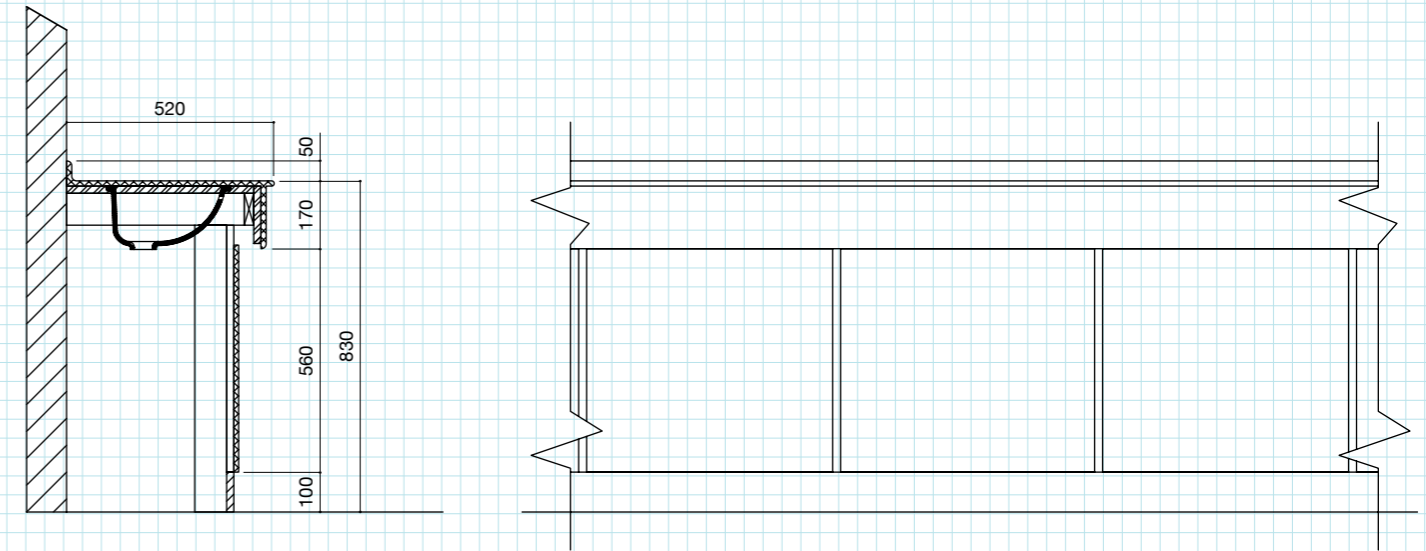
Bespoke Vanities

In addition to the standard vanity layouts shown below we can accommodate bespoke designs including troughs, wall-hung glass etc.



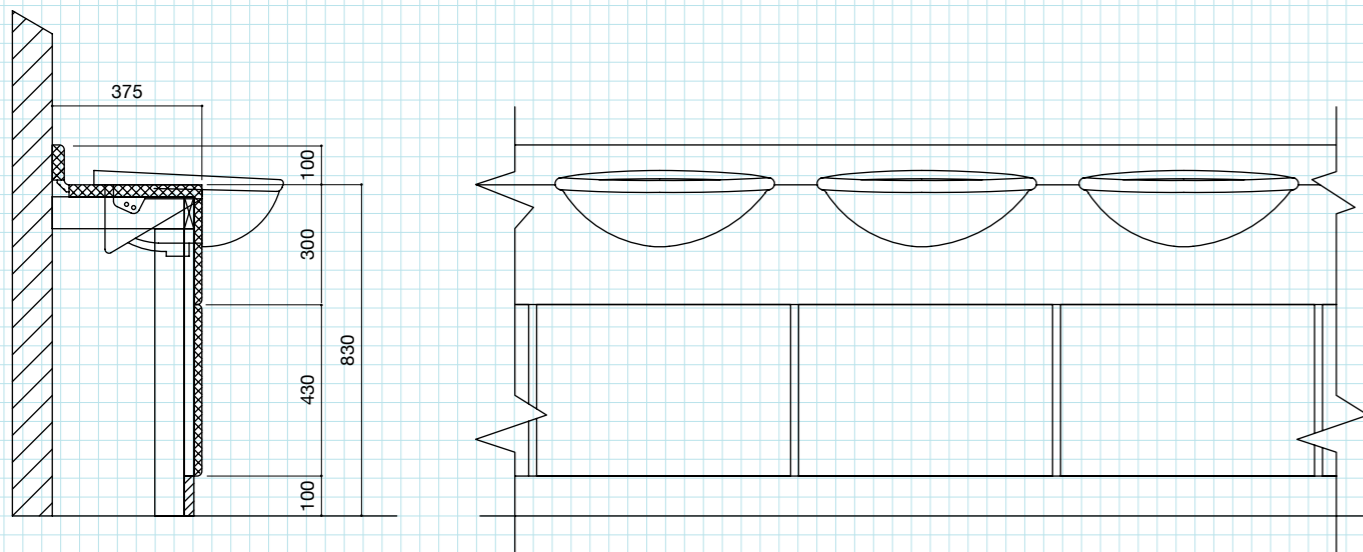
Postformed Vanity to Suit Inset WHB

Standard height - 830mm FFL
 Education option - 720mm FFL
 Nursery option - 600mm FFL



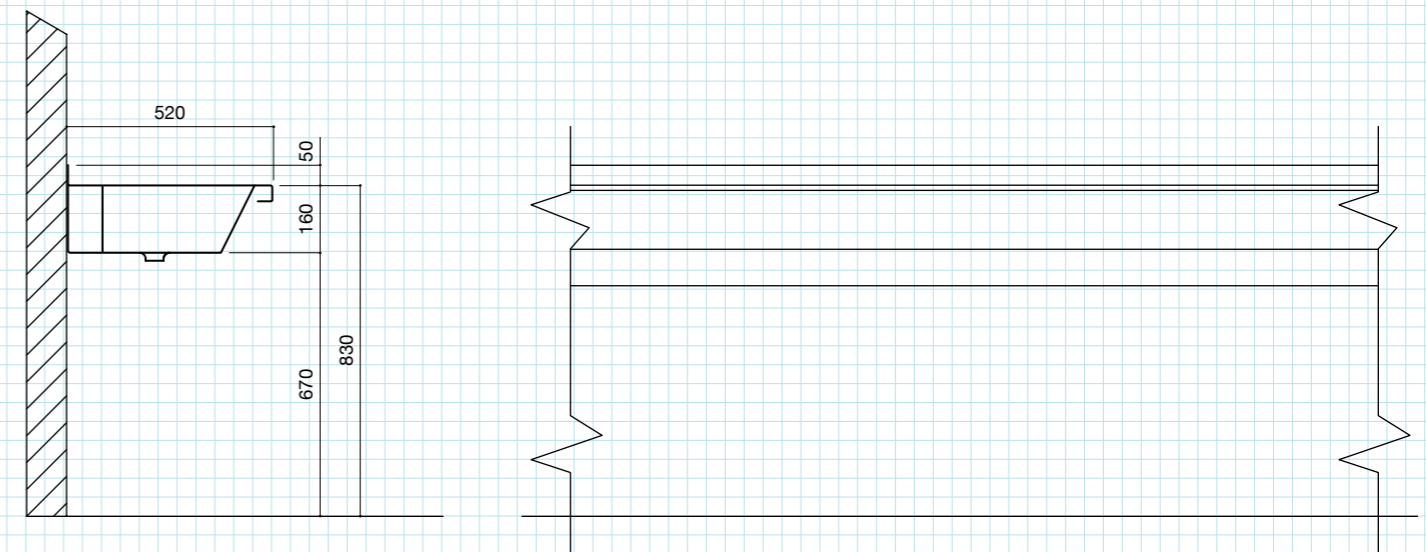
Solid Surfacing Vanity to Suit Inset & Under Mounted WHBs

Standard height - 830mm FFL



Postformed Vanity to Suit Semi-recessed WHB

Standard height - 830mm FFL
 Education option - 720mm FFL
 Nursery option - 600mm FFL



Troughs

Standard height - 830mm FFL



Cubicle + Washroom Systems

Uniclass L2226
CI /SfB
(22.3) X

September 2011

Head Office

Petal Postforming Limited
Dromore Road
Irvinestown
Co. Fermanagh
N. Ireland BT94 1ET
Tel +44 (0) 28 6862 1766
Fax +44 (0) 28 6862 1004
Email sales@petal.co.uk

Dublin Office

Petal Postforming Limited
Unit 62 Western Parkway Business Park
Ballymount Road Lower
Dublin 12
Ireland
Tel +353(1) 4600 877
Fax +353(1) 4600 881
Email sales@petal.co.uk

London Office

Petal Postforming Limited
Gibbs House Kennel Ride
Ascot
Berkshire
England SL5 7NT
Tel +44 (0) 1344 893 990
Fax +44 (0) 1344 893 930
Email sales@petal.co.uk