

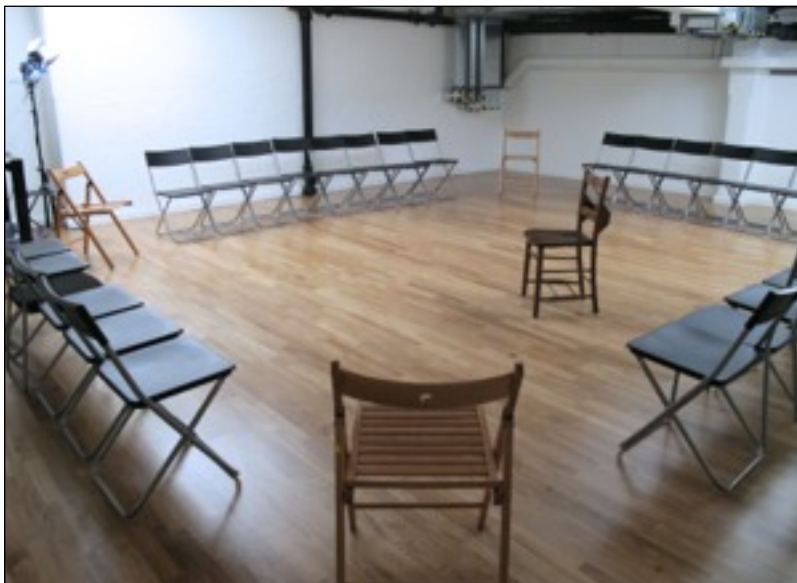
STUDIO SOHO: 2a ROYALTY MEWS 22-25 DEAN ST W1D 3AR – Call 020 7437 3175

CENTRE RESOURCES: Reception-area, hallway-seating for up to 10, 2 fully wheelchair-accessible studios*. Free Wifi. Both studios are air-conditioned. (Other facilities are available: including serviced-hire and staffing, HD still/video Camera and operator, portable blue-screen background, DV projector, etc – each, by arrangement).



MAIN ENTRANCE & FOYER

Stairlift for step-free access from street-level



STUDIO 1
70 sq m

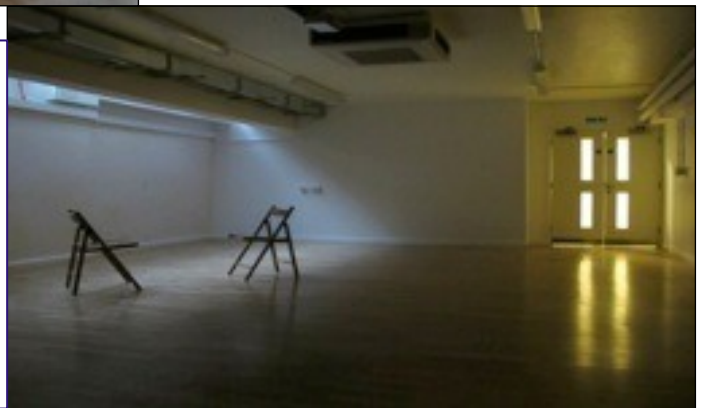
Approximately 9.25 x 8 metres.
Ceiling height 2.40 / 2.04 m under beam. Air-conditioning.
Here shown in 4-side set-up.
Including:

- Flexible seating for up to 50
- Power sound-system inc CD player, MP3 Dock
- Movement-space for 14
- Transposing keyboard

STUDIO 2
57 sq m

Approximately 9 x 6.4 metres.
Ceiling height 2.40 m. Air-conditioning.
(shown without furniture) Including:

- Lirika upright piano
- Flexible seating for up to 40
- 3-seat Ikea sofa
- Portable soundbox / MP3 Dock



For fully-staffed reception facilities – including processing of clients, hospitality, ident – photography and DV-camera operation, photocopying, uploading etc – please enquire.

STUDIO SOHO/GILES FOREMAN CENTRE FOR ACTING [Caravanserai Productions Ltd t/a]
www.gilesforeman.com info@gilesforeman.com Tel: 020 7437 3175
Main entrance: 2a Royalty Mews, Dean Street W1D 3AR

STUDIO SOHO

Based in a quiet mews in **Dean Street** – 2 doors down from the Soho Theatre, between Soho Joe and Quo Vadis restaurants, in the heart of the Theatre and Media industries.

We have 2 bright, modern air-conditioned studios available for rehearsals, 1-1 coaching, castings, workshops, training sessions and meetings etc.

The CENTRE offers:

- 11 steps to access main foyer, then step-free
- PLUS – totally step-free access via stairlift
- Pleasant foyer and Reception area
- 10 minutes get-in / get out time per booking
- Serviced hire available
- Free wi-fi
- A fully-accessible toilet/wet-room
- Waiting-space for up to 10 people
- 2 air-conditioned studios
- Oak-laminate wood flooring

Other bookable facilities, by prior arrangement:

- Use of Kitchen for beverages, Microwave etc
- Catering facilities for up to 40 people
- Use of chill-out table area
- Use of Changing Room with 2 showers
- 20 yoga mats
- HD Camera, tripod, Blue-screen backdrop
- Power/stage lighting, black curtain tabs
- 22" TV, Epson DV projection
- Full-length mirror, use of items of furniture
- Use of Whiteboard / Flipchart
- Photocopying, Uploads

STUDIO 1: 70 sq m*

Approx 9.25 x 8 m, height 2.4 / 2.04 m

- Power sound-system inc CD player, MP3 dock
- Flexible seating for up to 50
- Movement-space for 14
- Transposing keyboard

STUDIO 2: 57 sq m*

Approx 9 x 6 m, height 2.4 m

- Upright piano plus transposing keyboard
- 3-seater sofa
- MP3 Dock
- Flexible seating for up to 40

