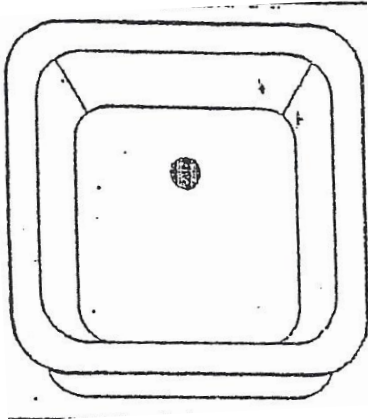


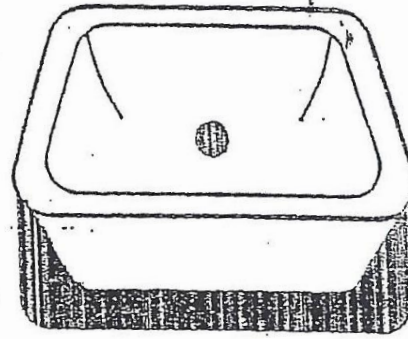
1. Important—First check fit of frame to polyethylene sink.



Double check for correct size by placing the frame over the bowl to make sure it fits perfectly.

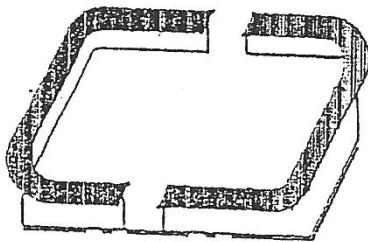
DO NOT cut hole in counter yet.

5. Set bowl (Frame attached) into countertop.

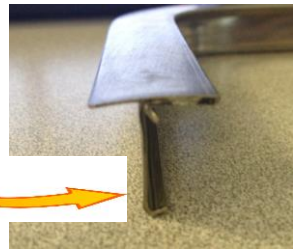


Position frame and bowl into opening. Outside of rim will hold sink in hole. NOTE: Sink will still be loose in rim at this point but held in place by tabs pushed out in step #4.

2. Scribe around the J Hook of the FRAME. (DO NOT USE BOWL.)



Position frame only on countertop as it will be installed with sink.

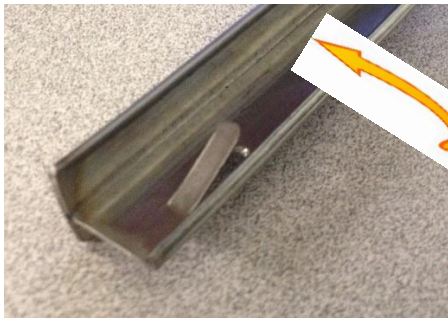


Scribe around the bottom of the frame's "J" hook.

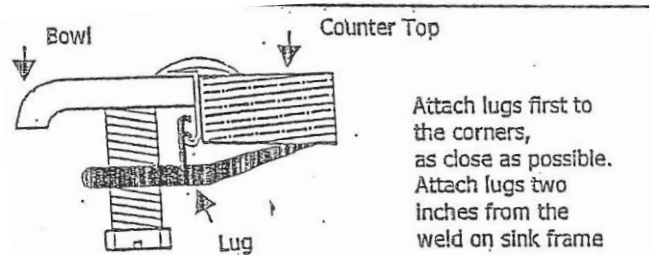
6. Attach lugs and tighten



3. Caulk with high quality silicone.



Caulk the rim where the top of sink flange contacts the bottom of the rim.



Attach lugs first to the corners, as close as possible. Attach lugs two inches from the weld on sink frame

4. Install sink into rim.

Fit sink into rim. AFTER fitting sink into rim push out stamped tabs to hold sink in rim while finishing installation.



7. Finish installation.



Inspect sink for secure fit and clean up any excess caulk that may have pushed out between the rim and sink.

WARRANTY: Manufacturer will replace any defective frame within one year of purchase. Liability extends to frame only. Damage from improper installation is not covered.