



+91 97440 11100

noel

GET MESMERIZED...

The Earth is a one of the latest offerings from the trusted builder- Noel. It is centrally located in Kadavanthara, Kochi. Enjoy fine living in grandeur at the Earth. The magnificent project comes with all amenities in the heart of the city. The Earth combines the best of two worlds Nature and city. Built for people who demand the best, the Earth showcases some of the best talents in the country in modern home architecture, creating outstanding spaces for a healthy community to prosper in.

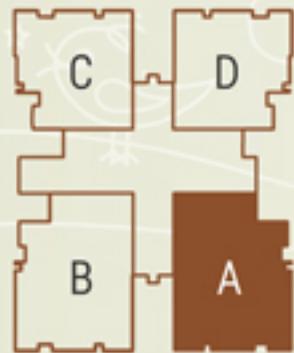
DAY VIEW



NIGHT VIEW



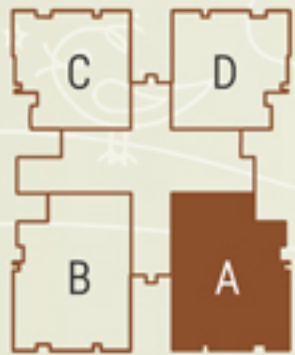
Permit No : KRPI.413/14/COC/KRP/1192/14



TYPE - A

Area : 2117 Sq.Ft





TYPE - A
Perspective View
Area : 2117 Sq.Ft





TYPE - B

Area : 2117 Sq.Ft





TYPE - B

Perspective View

Area : 2117 Sq.Ft





TYPE - C

Area : 1875 Sq.Ft





TYPE - C

Perspective View

Area : 1875 Sq.Ft

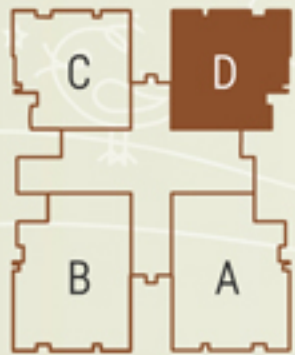




TYPE - D

Area : 1875 Sq.Ft





TYPE - D
Perspective View
Area : 1875 Sq.Ft





TYPICAL FLOOR





GROUND FLOOR LAYOUT





PODIUM LAYOUT



Specifications



STRUCTURE	: RCC framed structure. Structure designed as Earthquake resistant structure as per IS-1893. Wall partitions with cement concrete solid blocks or equivalent.
FLOORING	: Laminate wooden flooring for living/dining area. 80 x 80 double charged vitrified tiles for other rooms except toilets and balconies. Ceramic tiles of premium quality for toilets and balconies. Vitrified/Granite tiles for lobby, staircase and common areas.
PAINTING	: Putty and two coats acrylic emulsion with low VOC content for internal walls and ceilings. Cornice in living/dining rooms. Exterior emulsion for external walls.
JOINERY	: Polished teak veneered pre-hung door with engineered door frame/equivalent for main door. Polished veneered pre-hung flush door with engineered door frame for internal doors. Both side laminate flush doors with PVC wrapped door frame for toilet doors. French windows, windows and ventilators with powder coated aluminium section.
ELECTRICAL	: Three phase power supply with concealed conduit wiring of superior quality PVC insulated copper cables, adequate light and fan points, 6A/16A plug points controlled by ECLB and MCB's with independent energy meter. Elegant modular switches of premium make. Concealed cable TV point in living/dining room and all bedrooms. Concealed conduit wiring for telephone in living/dining room and all bedrooms. Provision for AC in all Bedrooms. Video Door Phone/ Intercom in Living/dining room.
TOILETS	: Ceramic tiles upto false ceiling height in all toilets. Sanitary ware shall be of premium quality snow white colour. Water efficient wall hung EWC with concealed cistern of premium make in all toilets except servant's toilet. Chrome plated water efficient plumbing fixtures. Diverter with overhead shower and piping for geyser in all toilets except servant's toilet. Provision for exhaust fan in all toilets.
KITCHEN	: Bare kitchen with one inlet point for sink cock, water purifier. Single Bowl Single Drain Board sink and sink cock shall be supplied. Provision for exhaust fan. Provision for washing machine in drying balcony.
RETICULATED LPG	: Provision for reticulated gas supply with individual meter subject to government rules prevailing.
GENERATOR	: For lifts, common lights, water pumps etc. 1000 W power for each apartment on lighting points.
LIFTS	: Three lifts stopping on all floors. Two passenger lifts and one service/Stretcher lift.
WATER SUPPLY	: Water supply through UG sump tank and OH water tank with adequate storage capacity and individual water metering system for each apartment.
FIRE FIGHTING	: Fire fighting arrangements as per KMBR requirements. Every floor provided with hose reel box and hose.
ADDL FACILITY	: All round compound wall with guard room for 24 hours security. Rest rooms for Drivers, caretakers and maids.



Permit No : KRPI/3/15

Relaxation,
Rejuvenation
and Recreation...



AMENITIES

- 3 climate controlled guest suites
- Climate controlled gymnasium
- Indoor recreation area
- Indoor badminton court
- Indoor swimming pool with children's wading pool
- Spacious Attic Party Hall
- Well Equipped Kitchen
- Barbecue Station
- Terrace Garden
- Pool Table
- Table Tennis
- Office Space

PROJECT HIGHLIGHTS

- Walkable distance From Kadavanthra Jn.
- Near To Metro Station
- Ample Open Landscaped Area
- Close To Rajiv Gandhi Indoor Stadium, Hospitals, Schools & Places For Worship
- Open Children's Play Area
- Individual Water Meter For Apartments
- Reticulated Cooking Gas System
- Premium Quality Finishes And Fittings
- RO Plant For Water Purification
- 24 Hrs Security Service
- Surveillance Camera
- Generator For Backup Power

noel

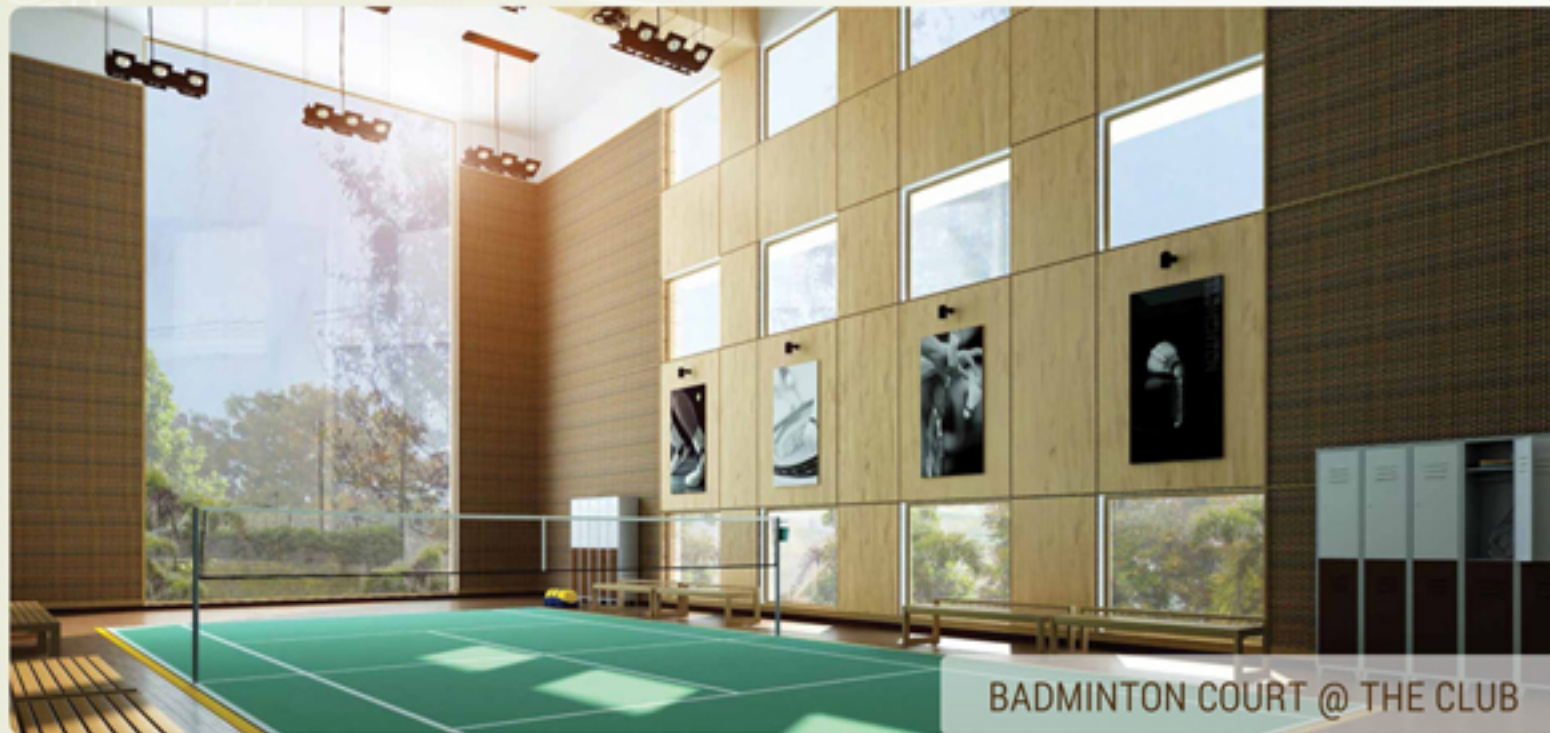
+91 97440 11100

www.noelprojects.com

🎵 Amenities



PARTY AREA @ THE CLUB



BADMINTON COURT @ THE CLUB

🎵 Amenities

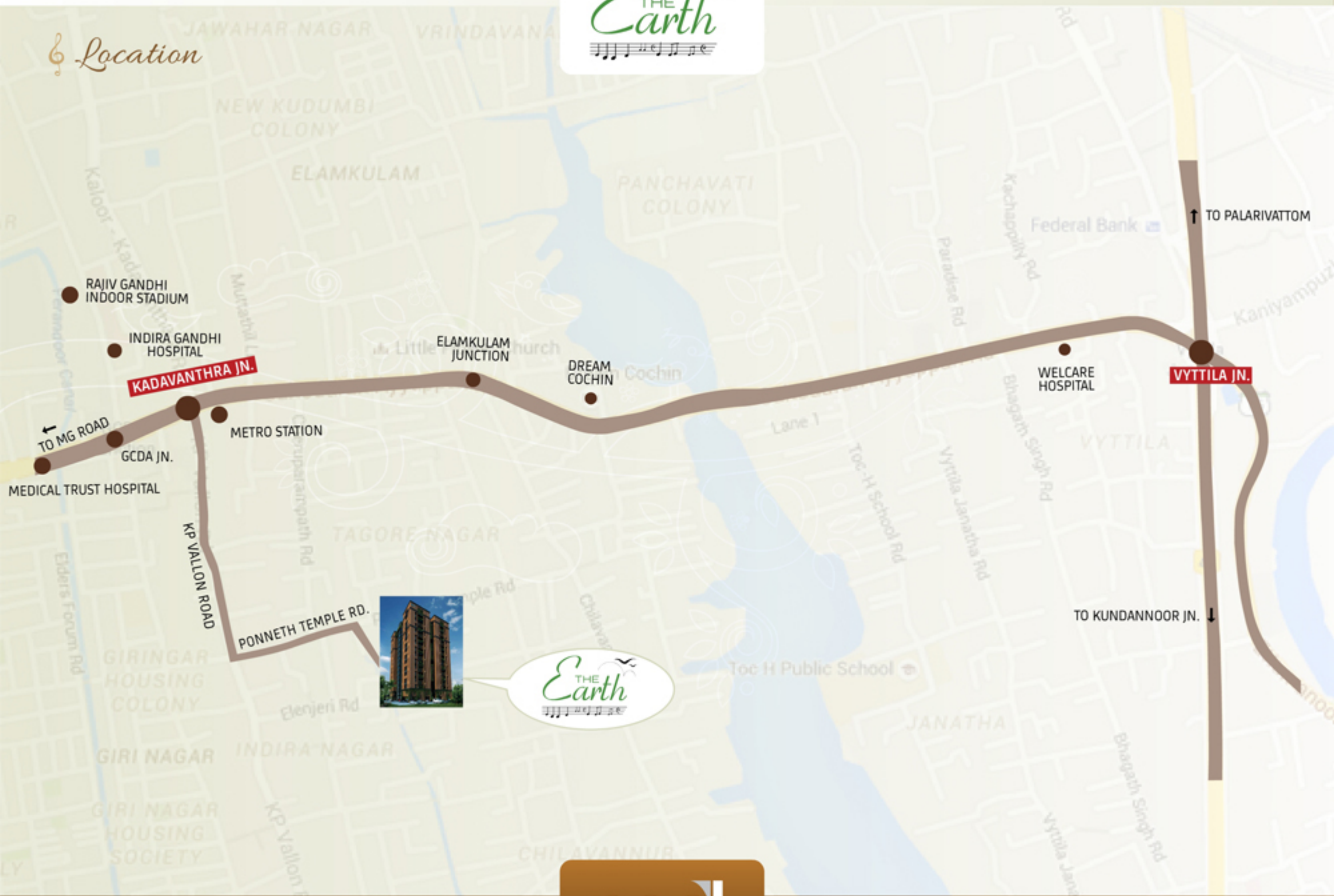


SWIMMING POOL @ THE CLUB



CLIMATE CONTROLLED GYMNASIUM

Location



CORPORATE OFFICE

Noel Villas and Apartments
Noel House, Kakkanad
Kochi - 682 021.

Tel: +91 484 2870800

CALL

+91 974 4022200
+91 974 4011100

noel
passion for premium

BRANCH OFFICES

KOTTAYAM

Matteethra Heights
Baker Junction, Kottayam.

Tel: +91 481 2564312

THIRUVALLA

Nelluvelil Compound
Near Chilanka Theatre.

Tel: +91 469 2620933

E-mail : sales@noelprojects.com

Web : www.noelprojects.com