

SMOKY HILL EXPRESS

Elbert County Historical Society & Museum Newsletter

SPRING 2019

IN THIS ISSUE

Echoes of the Past	5
History of the Camera	4
Memberships/Sponsorships	2
Museum Sponsors	6
Pioneer Fourth Celebration	3
Recurring Gift Made Easy	2
Website Redesign	3

**THE MUSEUM IS OPEN
THURSDAY THRU SUNDAY
1:00 TO 4:00 PM EVERY WEEK
DURING THE SUMMER!**

**2019 Encore Feature:
RAMBLER RANCH
AUTO COLLECTION!**

UPCOMING EVENTS

**Elbert County Museum
2019 Opening Day**
Sunday, May 26, 1:00 - 4:00 pm

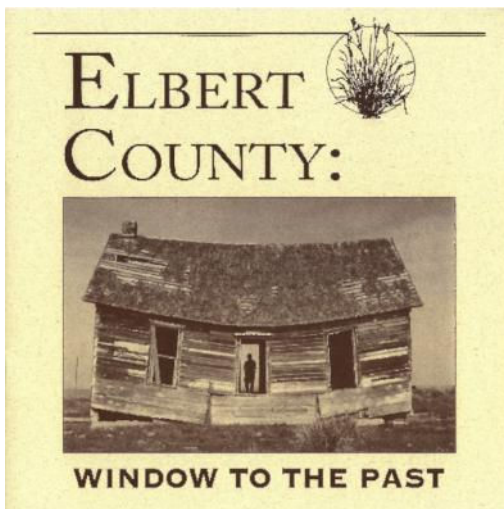
Pioneer Fourth Celebration
Thursday, July 4, 10:00 am - 3:00 pm
Elbert County Museum Grounds

Annual Membership Meeting
Saturday, September 7, 10:00 am
Elbert County Museum Assembly Room

**DONATE NOW
THROUGH
COLORADOGIVES.ORG**

ELBERT COUNTY: WINDOW TO THE PAST -25 YEARS LATER

It's hard to believe that over twenty five years have passed since the Elbert County Museum first opened. A lot has changed since then and the facilities have undergone a total transformation both in the quality of exhibits, as well as the building itself. The first permanent exhibit, *Elbert County: Window to the Past*, set the bar high for all the displays that have followed; and was the result of a research and development grant funded by the Colorado Endowment for the Humanities.



BOOKLET COVER

That project spanned 18 months and was the culmination of many talented people, voracious research, and numerous photo days, oral interviews and field trips. The end result was an impressive and thorough interpretive history of Elbert County and it quickly became one of the main staples of the museum. The beautiful free-standing arched panels, upon which the text, photos and maps were mounted, made the exhibit incredibly versatile and mobile, and a companion booklet was even printed.

After the museum re-opened following major renovations in 2008, a portion of the exhibit was relocated to the main hallway and incorporated into the Main Street display.

This spring the *Windows to the Past* exhibit was restored and reinstalled in its entirety in the main hallway. Mounted on newly fabricated panels, the exhibit has returned to welcome, entice and draw visitors into Elbert County's rich and colorful history.





ELBERT COUNTY HISTORICAL SOCIETY & MUSEUM

JOE MARTELL
President

HANK SMITH
Vice President

LUCY HOFFHINES
Secretary

DONNA SMITH
Treasurer

PATSY NORTH
Board Member at Large

MONTY ASHLIMAN
Board Member at Large

CARLA MARTELL
Past President

ELBERT COUNTY HISTORICAL SOCIETY
515 Comanche Street • PO Box 43
Kiowa, Colorado 80117

ElbertCountyMuseum.org

The Elbert County Museum is owned and operated by the Elbert County Historical Society, a 501 (c)(3) non-profit organization.

MISSION STATEMENT

To record and maintain the history of Elbert County, Colorado from the earliest settlement.

To work for the establishment of appropriate vaults and archives for the preservation of original manuscripts, documents, photographs and artifacts which may come into the possession of the Society.

To maintain, preserve and house the above stated articles in the Elbert County Museum.

RECURRING DONATIONS: GIFTS WE CAN COUNT ON!

Your recurring donation to **Elbert County Historical Society and Museum** is support we can count on!

When you use this option, you are making a commitment to donate a particular amount over a specific period of time. You can give as little as \$10 per week, month, quarter or year. Simply set up your donation schedule and your deductions will happen automatically, straight from your credit card, debit card or bank account.

To learn more about recurring donations, contact ECHS Treasurer Donna Smith at info@elbertcountymuseum.org, or visit www.ColoradoGives.org FAQs.

Would you like to be a 2019 Season Sponsor? Please contact Carla Martell at 303.621.2229 or email us at info@elbertcountymuseum.org.

MEMBERSHIP LEVELS

Individual -\$15

Student/Senior -\$8

Family -\$20

Volunteer -Donation of six (6) hours of volunteer time or participate in two (2) functions and/or events.



SEASON SPONSORSHIPS

Museum Season Sponsorships are collected annually and expire at the end of each calendar year. Sponsorships support the general operating fund, new and permanent exhibits, development of educational initiatives and public programs, and the historic museum building and its infrastructure.

Season sponsorships are available at four different levels and are identified by icons of early Elbert County industry

LOCOMOTIVE-

Contributions of \$200 cash/merchandise or more will receive:

- acknowledgment as a Season Sponsor on all exhibit and event flyers (including Pioneer Fourth)
- recognition on signage inside the museum and at the Pioneer Fourth
- inclusion in the newsletter(s) and
- on our website



PONDEROSA PINE-

Contributions of \$100 cash/merchandise or more will receive:

- recognition on signage inside the museum
- inclusion in the newsletter(s) and
- on our website



WINDMILL-

Contributions over \$25 cash/merchandise will receive:

- recognition on signage inside the museum
- inclusion in the newsletter(s)



CULTIVATOR-

Contributions of \$250 cash or more through the **East Central Enterprise Zone**** will receive:

- acknowledgment as a Season Sponsor on all exhibit and event flyers (including Pioneer Fourth)
- recognition on signage inside the museum and at the Pioneer Fourth
- inclusion in the newsletter(s) and
- on our website



**East Central Enterprise Zone

By making a \$250 or more cash donation, **contributors receive 25% of that amount as a credit against their state tax liability (i.e.: \$250 donation = \$62.50 credit).** The contribution also may be itemized on their federal tax return.

For additional details on the different levels of **membership** or **sponsorship**, forms can be picked up at the museum's visitors desk or printed off our website at ElbertCountyMuseum.org.

PIONEER FOURTH CELEBRATION

Thursday, July 4 from 10:00 am to 3:00 pm
Elbert County Museum Grounds

Mark your calendars so you can plan on spending a fun-filled time celebrating Independence Day with new and old acquaintances, neighbors, and visitors. Enjoy live music, games, silent auction and viewing the exhibits inside the Museum. Don't miss out on the traditional BBQ lunch prepared fresh during mid day. The cakewalk and a pie auction will provide attendees the opportunity to take a delicious homemade pie or cake with them. Local artisans will be demonstrating their talents again this year in various locations throughout the grounds.



SHARE THE MUSEUM WITH VISITORS

Planning a family reunion, birthday party, alumni reunion, church event, homeowner's association meeting or other special occasion this summer? Please keep the museum in mind. Doors are open four days a week- **Thursday through Sunday from 1:00 to 4:00 pm**. This would be an excellent opportunity to share with visitors the rich history of Elbert County.

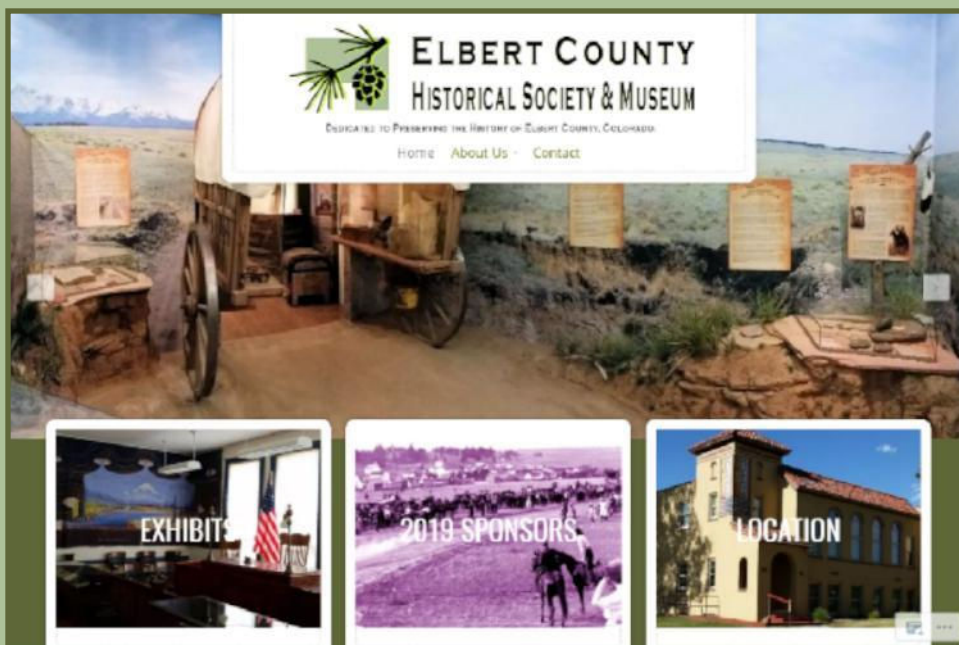
WEBSITE REDESIGN

Over the winter the museum website experienced a complete renovation. Inspired to create a more mobile-friendly online presence; the new design incorporates a clean, minimalistic look that includes easier navigation, simple menus, and beautiful new photographs of the building and exhibits.

In addition to the new features, friends and visitors will still find familiar features including: Season Sponsor acknowledgments, the Smoky Hill Express newsletter, artifact donation, annual membership and sponsorship resources.

Check it out today!

ElbertCountyMuseum.org



NEW HOME PAGE

A BRIEF HISTORY OF THE CAMERA

The pinhole camera, known as the Camera Obscura, was invented by a man named Ibn Al-Haytham, familiarly called Alhazen. He was born in Basra, now in Iraq around 965 AD. His interests included astronomy, chemistry, mathematics, medicine, music, optics, physics and poetry. Because of his vast knowledge and experimentation, he has been described as one of the most important and influential figures in the history of science.

Alhazen's work with lenses led to the development and production of early eyeglasses, microscopes and telescopes. He identified the principles that underpin photography when he built what is considered to be the first Camera Obscura (literally "Dark Room") on record. This was an enclosed space, dark except from one small point through which light may enter. The result is an image rotated 180 degrees on the wall opposite the entering light. This principle is still in use today, often during a solar eclipse. The Greek philosopher and scientist Aristotle had conceived of this idea, but historians believe that Alhazen was the first person to actually build the device.

The next major advance in the history of the camera did not come until about 1816, when French inventor Nicéphore Niépce built a small camera, into which he inserted paper covered with silver chloride, which darkens when exposed to light. This device captured the first photograph, but was not really successful because there was no means of removing the remaining silver chloride or preserving the image, which eventually became completely dark. However in 1826, Niépce, using a wooden box camera made by opticians Charles and Vincent Chevalier, replaced the silver chloride with bitumen, which hardened when exposed to light, allowing the remaining material to be dissolved to produce a photograph similar to those of today.

Niépce partnered with Louis Daguerre, who after Niépce's untimely death in 1833, continued to experiment with various chemicals until 1837, when he created the first practical photographic process, which he named the daguerreotype.

In 1840, Henry Fox Talbot perfected a different process, using silver iodide coating to create a negative image on paper. He called this the calotype.

In the second half of the 19th century, photographic technology progressed quickly. The process and materials were continually improved and with innovations such as the collodion process, wet plates and gelatin plates, cameras came down in size until they could easily be carried and even hidden, disguised as items like hats or pocket watches.

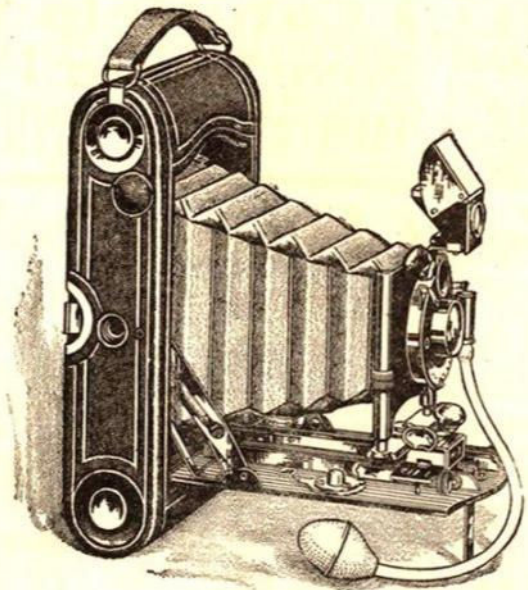
Photographers experimented with single-lens reflex (SLR) and twin-lens reflex. Much development focused on reducing exposure time. Previously, exposure times were so long that plates could simply be exposed and removed by hand. Short exposure times required shutters, which were initially sold separately as accessories to the camera.

The end of the 19th century saw more developments, including built-in shutters and the advent of film. The use of photographic film was pioneered by George Eastman. His first camera, which he called the "Kodak," was a very simple

box camera with a fixed-focus lens and single shutter speed. It was first offered for sale in 1888. At this time, relatively low-cost cameras became accessible to the general public.

Many of these early features are still present in modern cameras. While much of the technology from the 1800s has disappeared - replaced by better designs, we owe a large portion of modern photography to the inventors of earlier eras and their countless experiments with new materials and processes.

VISIT THE PHOTOGRAPHER'S STUDIO -the latest business to move into the Main Street exhibit! View items used by photographers of the past.



There's a profit side as well as a pleasure side in *the use of a*

KODAK

ON THE FARM.

Pictures of stock that you have to sell, pictures showing the development of animals at a certain age, of crops at a certain stage of growth, of buildings, and of ditches and fences and roads—all these can be used to advantage in systematizing and making your farm profitable.

Pictures of your family and friends, pictures of the places you visit and the things you and your family are interested in—these will add to the pleasure of home life for all the household.

And *you* can make such pictures.

The operation of a Kodak requires no technical knowledge. The little book that accompanies each camera tells how to take the pictures, how to develop the negatives and how to make the prints, all in a simple way that the beginner can easily understand. And by the Kodak system there's *no dark-room* for any part of the work.

Ask your dealer or write us for illustrated Kodak catalogue—free by mail.

EASTMAN KODAK CO., 432 State St., ROCHESTER, N. Y.

VINTAGE KODAK AD, 1912

ECHOES OF THE PAST -THE HUNGATE MASSACRE

This summer marks the 155th Anniversary of a tragedy which occurred twenty five miles southeast of Denver on a ranch in what would become Elbert County. Nathan Hungate (29) was employed by Isaac Van Wormer as the ranch manager for Van Wormer's ranch located on the banks of Running Creek in northern Elbert County. Nathan and his wife Ellen (25), and their two small children, Laura (2 1/2), and Florence (6 mos.), lived in the ranch house on the property.

For several days prior to the assault of the Hungates at the Van Wormer ranch, Cheyenne and Arapahoe warriors had been raiding various ranches and farms in the area. The skirmishes prior to the attack on the Hungates were pretty much limited to driving off and stealing livestock. The marauding warriors did not physically harm any of the affected settlers.

Around noon on June 11, 1864, the series of charges against the settlers took a deadly turn. The Hungates were attacked and their ranch house burned to the ground. Mrs. Hungate and the children were found murdered about 100 yards from the burned out house. Nathan Hungate was found about a half mile from the house. All four casualties had been shot numerous times and their bodies mutilated.

Philip Gomer who was logging near the ranch saw the smoke and went to investigate. When he reached the site of the ranch house, he was met with the horrible tragedy. The bodies were taken to Denver where they were placed on display for all to see. This sad incident certainly fueled the anger of the settlers and the government against the Native Americans still clinging to their ancestral hunting grounds in Colorado.

This anger would add to the growing hostilities between the whites and the Native Americans, which in a short five months would see another massacre. This time it would be the U.S. Army and Colorado volunteers attacking a band of Cheyenne and Arapahos camped in southern Colorado on the banks of Sand Creek.

The mystery of who was to blame for the savage murders of the Hungate family was never conclusively resolved.

To commemorate the 75th Anniversary of the Hungate Massacre, the Pioneer Women of Colorado erected a monument in 1939. The monument still stands in front of the old courthouse in Kiowa.



PIONEER MONUMENT,
ELBERT COUNTY COURTHOUSE GROUNDS



HUNGATE GRAVESITE,
FAIRMOUNT CEMETERY



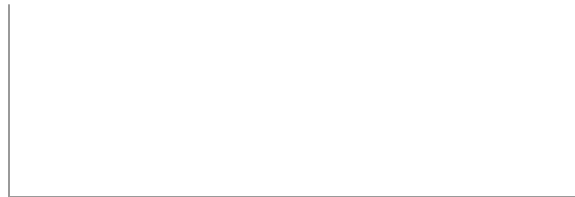
NEW SIGNS!

This spring six new Elbert County Museum signs were installed across the county. Can you find all of them?



ELBERT COUNTY HISTORICAL SOCIETY & MUSEUM

PO BOX 43 • KIOWA, COLORADO 80117



ELBERT COUNTY MUSEUM SPONSORS

While the museum receives funds through monetary donations given at the museum and with annual historical society memberships; Season Sponsorships and the Pioneer Fourth celebration are the main areas of income which allow the Elbert County Historical Society to develop exhibits and educational opportunities and to improve and maintain the museum building.

Thank you for your commitment to the educational and historical importance of the Elbert County Museum!

LOCOMOTIVE

Alan Lasater Foundation
Anonymous Donor
Bender Menders, LLC.
Ben & Laurie Duke
Elbert County
Abstract & Title Co.
Elizabeth Auto Repair Inc.
Front Range Kubota
Gordon Insurance
Agency, Inc.
High Plains Food Store
High Prairie Survey Co.
Lucy Hoffhines
Intermountain Rural
Electric Assn (IREA)
JR's Village Repair
Katee & Rick Kolm
Legacy Plow & Trailer

(LOCOMOTIVE CONT.)

Jim & Carla Martell
Mountain View
Electric Assn (MVEA)
Sawmill Bar & Grill
Spring Valley Golf Club
Sun Valley Electric Inc.
True Value -Elizabeth
360 Diesel & Auto Repair

PONDEROSA PINE

Angie's Cuttin Corner
Monty & Phyllis Ashliman
Banner Mortgage
-Lisa Lessard
Big O Tires -Elizabeth
Laurel Brown

(PONDEROSA PINE CONT.)

Elizabeth Locker Plant
Hamacher Well Works Inc.
Jill's Feed & Country Supply
Kiowa Alumni Association
Napa -Elizabeth
Royal B Threads, LLC
Jeanne Thompson

(WINDMILL CONT.)

Safeway -Elizabeth
Sizzor Magic
Skadoodles Ladies Boutique
Sonic -Elizabeth
Sprouts -Parker
Straight Line Installation, Inc.
Sweet Alfas

WINDMILL

Allstate Insurance -Elizabeth
Bernie's Kitchen
Burger King -Parker
Bob & Sandy Claeys
Todd Collins
-Attorney at Law
Dusty Plains
Veterinary Service
Edward Jones -Elizabeth
El Rinconcito LLC -Elizabeth
Elizabeth Floral
Forty Mile Feed
Dulcie Jones
Kiowa Auto Repair
Laura Lempe
MK Liquors
Mountain Man
Nut & Fruit Co. -Elizabeth
Murdoch's -Parker
Parker Port-A-Potty

CULTIVATOR

Glaser Gas &
Equipment Co. -Kiowa
Harold Heckman
HOO Motors
JC Martell
Smith Ranches