



Monkey Puzzle Ware

Newsletter edition 39

9.11.18

Dates for your diary

Thursday 15th November

Christmas card orders back

Friday 16th November

Wearing spots for children in need

Saturday 17th November

Baby Massage

10.00-11.00

Wednesday 21st November

Photo order form return

Dear Parents,

Apologies again for the cancellation of the curriculum evening, we will be in touch soon to reschedule.

If your child is due to move into the pre-school room and you would like to increase their sessions to utilise funding, please be advised that the pre-school room is at capacity. If you would like to be added to a waiting list, please call the office.

The Toddler and Pre-School room are collecting milk cartons so that they can make an igloo, if you have any at home please don't throw them away, please give them to your room staff.

Kind Regards,

The Management Team

Our weekly Parent Challenge winner is...

Jemina

Dr's on Board



Dr Rachakonda
Consultant
Paediatrician



Dr Burugapalli
Gynaecologist



Dr Gali
Dentist

Whooping Cough...

Symptoms appear 6 to 21 days after being infected.

Infectious period: From the first signs of the illness until about 3 weeks after coughing starts. If an antibiotic is given, the infectious period will continue for up to 5 days after starting treatment.

Antibiotics need to be given early in the course of the illness to improve symptoms.

The symptoms are similar to a cold and cough, with the cough gradually getting worse.

After about 2 weeks, coughing fits start. These are exhausting and make it difficult to breathe.

Younger children (babies under 6 months) are much more seriously affected and can have breath-holding or blue attacks, even before they develop a cough.

Your child may choke and vomit.

Sometimes, but not always, there will be a whooping noise as the child draws in breath after coughing.

The coughing fits may continue for several weeks and can go on for up to 3 months.

Whooping cough is best prevented through vaccination.

If your child has a cough that gets worse rather than better, and starts to have longer fits of coughing more often, see your GP.

Whooping cough can be prevented by childhood vaccinations.

It's important for the sake of other children to know whether or not your child has whooping cough. Avoid contact with babies, who are most at risk from serious complications.

Mel's kitchen...



Hello lovely parents,

I am Mel, and I enjoy making scrumptious meals for your little monkeys... I hope you like my menu for next week, but if you do have some suggestions or recipes you would like to add do let me know 😊

Week 2	Monday	Tuesday	Wednesday	Thursday	Friday
Breakfast	Cereal + Toast Fruit selection Gluten, Dairy	Cereal + Toast Fruit selection Gluten, Dairy	Cereal + Toast Fruit selection Gluten, Dairy	Cereal + Toast Fruit selection Gluten, Dairy	Cereal + Toast Fruit selection Gluten, Dairy
AM Snack	Scotch Pancakes Gluten, Dairy	Bread Muffins + Better Gluten, Dairy	Cheese Straws + Salad Gluten, Dairy	Rice Cakes + Cheese Spread Gluten, Dairy	Vegetable Sticks + Dip Gluten, Dairy
Lunch	Lamb Tagine + Cous Cous Yoghurt Gluten, Dairy	Spaghetti Bolognese Chocolate + Beetroot Cake Gluten, Dairy	Sweet Potato + Vegetable Curry with Rice Yoghurt Dairy	Grilled Salmon + Noodles Melon Fingers Gluten, Fish	Cheese + Tomato Pizza with Salad Shortbread + Strawberries Gluten, Dairy
PM Snack	Fruit selection	Fruit selection	Fruit selection	Fruit selection	Fruit selection
Tea	Mixed Sandwiches + Salad Oat Cookies Gluten, Dairy	Beans on Toast Fruit Salad Gluten, Dairy	Ham + Mayo Wraps Carrot Cake Gluten, Dairy	Bagels with Cream Cheese + Salad Orange Sponge Gluten, Dairy	Tuna Parcels Yoghurt Gluten, Dairy

What's on in Baby Room...

This week...

The babies have been celebrating Diwali and exploring colour, they have had lots of fun splatter painting and exploring coloured water. The older babies have been practising drinking from a cup and the younger babies have enjoyed tummy time.



Next week...

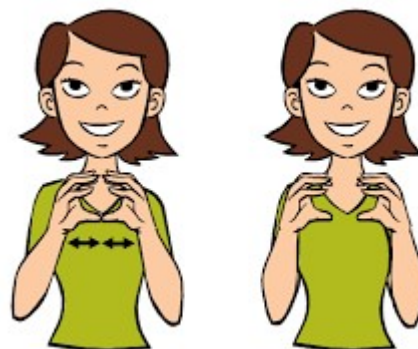
Next week the babies will be mark-making with natural resources like sticks, this works on their fine motor skills and is a fun sensory experience.

The babies will also be playing roll the ball in the garden to one another, this forms friendships and promotes collaborative play. It also encourages the babies to listen to instructions.

Our song of the week...

Wheels on the Bus

Baby sign of the week...



Ball

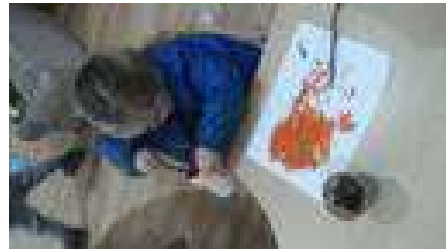
Things you can do with me at home to extend my learning...

- Play roll the ball with me at home, with older babies you could practise kicking or throwing balls, this works on my co-ordination and gross motor skills
- Encourage me at meal times to use my spoon
- Read stories with me about the potty/toilet to promote my awareness of what it's used for

What's on in Toddler Room...

This week...

The children in the toddler room have been celebrating Diwali, they have been learning about light and colours. They have also enjoyed splatter painting! The Toddler children are looking forward to Christmas and they have begun learning Christmas songs, this week has been 'Jingle Bells'.



Next week...

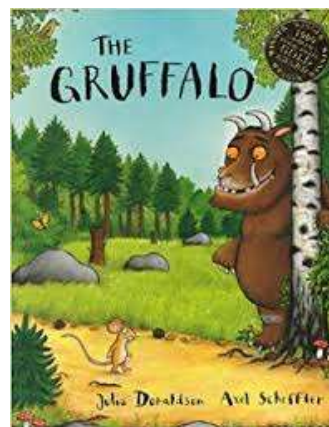
Next week the Toddlers will be learning about animals which hibernate for winter, we will be mark-making animal tracks and making our own dens, this encourages us to play in a group and works on our making relationship skills.

The children will also be acting The Gruffalo story out, this encourages us to retell stories and use our language skills.

Our song of the week...

Sleeping Foxes

Our story of the week...



Things you can do with me at home to extend my learning...

- Make dens with me at home, ask me about the animals that live in dens and how they keep warm in the winter
- Practise singing Christmas songs with me to encourage my language, use musical instruments and see if I can tap out the rhythm
- Take me on a walk and see if we can find any animal tracks, or you could make your own tracks with me at home using small world animals

What's on in the Pre-School Room...

This week...

This week in pre-school we have been learning about Diwali, we made our own henna patterns and worked on our pencil control. One of the children brought in a poppy so we also spoke about this during circle time.



Next week...

Next week the pre-school children are looking at weather, we will be exploring how ice is made, we will make our own and use it for our mark-making.

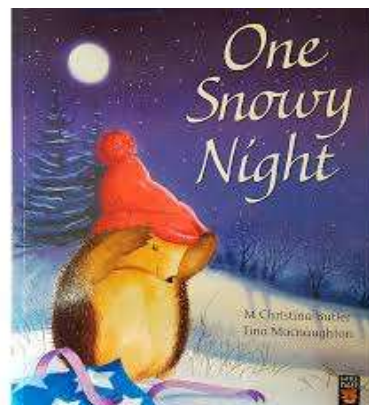
We will also be making snowmen and counting how many cotton wool balls it takes to make him.

We will be talking about the sun and the moon and learning about light and dark.

Our song of the week...

What is the Weather Today?

Our story of the week...



Things you can do with me at home to extend my learning...

- Take me to jump in muddy puddles, talk to me about the rain and where it comes from
- Extend my learning and talk to me about animals that hibernate
- Get rid of your old pumpkins and let the squirrels explore them in the garden

Meet the Team...



Swati Naidu
Managing Director



Amy Smith
Manager



Lucy Eaton
Deputy Manager



Becky Lee
Third in Charge



Heather Endsor
Third in Charge

Management



Emma Maslanka
Support Staff



Chloe Cockman
Support Staff



Amanda Lewis
Support Staff



Mel Cockman
Chef

Support Staff



Heather Endsor
Pre-School Room
Leader



Lewis Hill
Pre-School Practitioner



Stacey Cockman
Pre-School Practitioner



Marisa Skrjanec
Pre-School Support Staff

Pre-School Staff



Heather Endsor
Toddlers Room
Leader



Eloise Ambler
Toddlers Practitioner



Helen Markwick
Senior Toddlers
Practitioner



Tina Pullen
Toddlers Support Staff

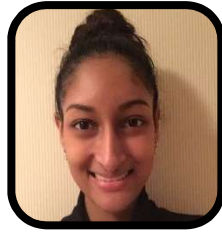


Matthew Lee
Toddlers
Practitioner

Toddlers Staff



Claire Waters
Baby Room Leader



Ash Rivet-Vitry
Baby Room Practitioner



Charli Leonard
Baby Room Practitioner



Elaine Lee
Baby Room Practitioner



Krissy D'Adamo
Baby Room Practitioner



Mary Hardy
Baby Room Practitioner



Amanda Harvey
Baby Room Support Staff

Baby Room Staff

Please note sometimes to meet our ratio requirements, you might find that some of our support staff are deployed in rooms other than they are generally been appointed for. This happens under circumstances such as covering sickness or holidays. The nursery always is legally required to be in ratio and we would prefer staff known to children covering the ratio, rather than having to always depend on external agencies. Our support staff and our lunch covers play a vital role in achieving this degree of continuity of care for our children. Room Ratio's: Under 2's – For every 3 babies, there is one member of staff team (1:3). 2's to Under 3's – For every 4 toddlers, there is one member of staff team (1:4). Over 3's – For every 8 Pre-schoolers, there is one member of staff team

(1:8). If ever you have any doubt or any aspect relating to our staffing matters, please feel free to contact Swati on 07859919519.

Parent's Challenge...

We will be challenging our parents each week to answer a few questions that relate to children, development or our policies and procedures. The weekly winner will then qualify for our end of month lucky dip and whoever gets picked in the lucky dip will get 10% off their next invoice.

Please note for the challenge to be complete you MUST answer all questions and in case of a tie, the last question will be deciding factor. Best answer will also be published in next week's bulletin.

Please send your answers to harsha@monkeypuzzleware.co.uk

This Weeks Quiz

1. What documents are parents required to bring on their child's first settle?
2. How many funded spaces are the nursery required to provide?
3. How has this quiz benefitted you?

Last Week's Answers

If high snow fall is threatened during a nursery day, then the nursery Manager will take the decision as to whether to close the nursery.

In the event of staff shortages due to snow we will contact all available off duty staff and/or agency staff and group the children differently until they can arrive

Parent Testimonials

The quiz provided reassurance that my daughter is on track with her language for her age and useful to know what to look out for.

It is informative to know what policies are in place for adverse weather. It is particularly useful as the cold weather will soon be upon us. I feel better prepared for a snow day as I will be warned and aware of it by you. I have to say I admired the way the nursery has stayed opened in the past due to snow.



ADMISSIONS POLICY

Monkey Puzzle Day Nursery is registered for **60** children between the ages of 3 months and 5 years.

The above statement is taken from the registration document and is the overriding policy in respect of admissions.

Other matters taken into account in deciding which child can be offered a place in the nursery are:

- Availability of places, taking into account the staff/child ratios, the age of the child and the registration requirements
- Children who have siblings who are already with us
- When the application is received (extra weight is given to those who have been on the waiting list the longest)
- The nursery's ability to provide the facilities for the welfare of the child, including appropriate staffing arrangements
- A child requiring a full-time place may have preference over one requiring a part-time place. This is dependent upon work commitments, occupancy and room availability
- Extenuating circumstances affecting the child's welfare or the welfare of his/her family.

We at Monkey Puzzle Day Nursery operate an inclusion and equality policy and ensure that all children have access to nursery places and services irrespective of their gender, race, disability, religion or belief or sexual orientation of parents.

Prior to a child attending nursery, parents must complete and sign a contract and registration form. These forms provide the nursery with personal details relating to the child. For example, name, date of birth, address, emergency contact details, parental responsibilities, dietary requirements, collection arrangements, fees and sessions, contact details for parents, doctor's contact details, health visitor contact details, allergies, parental consent and vaccinations etc.

Please note post registration settling in process will involve only after parent has paid the first month fees along with registration fee of £50. For settles to proceed parent will be required to bring along with them on the first day following documents:

- Collection photos
- Birth certificates
- NHS number for the child

All settings registered to accept government funding (detailed in the code of practice) must offer free places for two/three for the sessions specified by the local authority. At Monkey Puzzle Day Nursery we are currently required to only provide **10** free funded places available for children subject to availability. These places will be allocated on a first-come, first-served basis and can be booked a term in advance. Please note for admissions for the free nursery education we have a termly intake, beginning the term following your child's Second / Third birthday.

All funded sessions are now in line with the flexible arrangement as specified by the Government. When you register your child for their funded place we will discuss your needs, and as far as possible with availability and staffing arrangements we will accommodate your wishes.