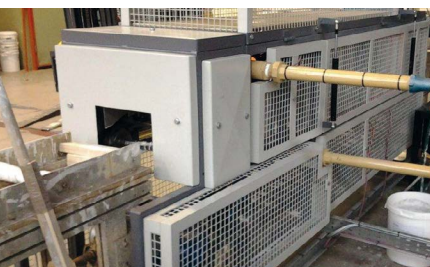


The TIMBERTIMES

Spring 2015



ILLINGWORTH INGHAM
M/CR LTD



NEW Fast Drying Timber Priming and Lacquering Facility

Investment has again continued at our Trafford Park Sawmills with the addition of a new mini gas dryer in December 2014. This universal vacuum coating line has an inbuilt gas infra-red dryer which enables us to dry painted materials very quickly. This means that primed and lacquered items no longer run the risk of stick marks from stacking as the items are now completely dry when they are stacked.

Our onsite priming and lacquering facility provides our customers with a cost effective way to have primed or lacquered timbers delivered to site - which is quicker, more cost effective and has a superior quality finish compared to hand finishing on site.

Timbers can have one or two coats of primer or lacquer and can be de-nibbed if required.

For more information call our sales line on 0161 872 1841.



Our Investment Programme Continues

As part of our upgrading programme we have recently invested in two new Baumann sideloaders. These 5.5 tonne capacity loaders are turbo charged giving improved performance and efficiency.

We have also invested in a new yard sweeper which will enable us to save time and keep our housekeeping in order. This should increase our efficiency in this area by up to 90%.



Green Energy Gets the Green Light

Our commitment to the environment continues. Following on from our major investment in green energy production earlier in the year we have now invested in replacing around 200 lightbulbs on site with LED lights. This will not only reduce our electricity consumption, but will also decrease our carbon footprint.

We have replaced our existing 400 watt bulbs with 100 watt. Our new LED lights are guaranteed for 50,000 hours and will substantially reduce our energy costs and usage.



Shaun Cowdy Retires

In December we said farewell to Shaun Cowdy as he took retirement from our Roger Haydock division. Shaun joined Roger Haydock in 2002 and moved to Trafford Park in 2011 when Illingworth Ingham (M/cr) Ltd acquired Roger Haydock.

We wish Shaun every happiness in his retirement and no doubt he will spend much of his time pursuing his love of golf.

We are pleased to announce that Andrew Haydock has joined us to take over Shaun's Shropshire and Stoke areas. Tony Owens has taken over Shaun's accounts in Wales and Liverpool, Wendy McGarrigle Manchester and Macclesfield accounts and Mark Wilkinson Lancashire.

The office contacts for Roger Haydock will continue to be Mark Carter and John Parry.

Call our sales line on **0161 872 1841** or email: **office@iitimber.co.uk**
www.iitimber.com.

A man wearing an orange high-visibility safety vest and glasses is operating a large industrial machine, likely a planer or jointer, in a wood processing facility. He is carefully guiding a long piece of wood through the machine. The background shows a large industrial space with various wooden materials and equipment.

As part of their environmentally sound sourcing policy Meifod have chosen Illingworth Ingham (M/cr) Ltd to supply their FSC and PEFC certified timber. We have been supplying Meifod for over 10 years, providing them with PAR/ Chamfered machined Vth quality redwood.



The Harbour

At Illingworth Ingham (M/cr) Ltd have been supplying high quality hardwood and softwood sawn and machined timbers for over 80 years, offering one of the best equipped timber profiling sites in the UK.



It was Illingworth Ingham (M/cr) Ltd that JDM Joinery Ltd in Skelmersdale chose to provide the CND Beech required for The Harbour, a prestigious new mental health unit in Blackpool.

JDM Joinery Ltd's joinery workshop manager John Abbott said "We were nominated earlier this year to supply all doorsets and screens to the £40 million project 'The Harbour', a state of the art NHS health unit in Blackpool."

"Illingworth Ingham (M/cr) Ltd supplied over 50m³ of machined and sawn CND Beech for this project. We were very pleased with the quality of all the machined sections supplied and the quick delivery of sawn materials."

"The excellent service enabled us to complete on time."

*50m³ of machined and sawn
CND Beech*



Inspired Garden Room

Inspired Garden Rooms provide their customers with a cost effective, inspirational, elegant garden room which will add value to a property and is built to last. Not only are the garden rooms a great option for those who need more space but don't want to extend or move; they are also an extremely attractive garden feature.

At the centre of each garden room's attractiveness is the timber cladding finish, which has the added benefit of providing additional insulation. Inspired Garden Rooms have been regularly sourcing the Western Red Cedar that they require from Illingworth Ingham (M/cr) Ltd.



ILLINGWORTH INGHAM
M/CR LTD

Call our sales line on **0161 872 1841** or email: **office@iitimber.co.uk**
www.iitimber.com.



Architectural Cladding



ILLINGWORTH INGHAM
M/CR LTD

Using timber cladding has long been a popular way to finish a building, and has become a particular favourite on contemporary design projects. It can be an attractive, economical and eco-friendly way to finish a property. It is becoming increasingly popular on both commercial and domestic buildings.

Importantly, it also provides a hardwearing, protective layer against the elements, and it is an excellent insulator.

When selecting a cladding timber it's important to choose one that is naturally resistant to decay so Western Red Cedar, Siberian Larch and Thermowood are all popular choices. They offer a great deal of protection if installed correctly and are well maintained, lasting a lifetime and more. Vertical Grain Hemlock, Clear Douglas Fir, Redwood and Whitewood can also be used for cladding but will require proper adequate treatment.

At Illingworth Ingham (M/cr) Ltd we provide natural timber cladding systems, offering advanced design and precision machined profiles.

Siberian Larch gives a contemporary feel and is ideal for exposed elevations.

Western Red Cedar is a popular choice for architectural cladding. It has a relatively knot-free, 'clean' appearance and a natural resistance to decay and moisture absorption, meaning it can typically be installed without treatment.

Clear Douglas Fir is appreciated by designers and architects alike. It has a rich visual quality that responds to fine craftsmanship and finishing. It is best known for its tough fibre, dense grain structure and strength. Douglas Fir machines to an exceptionally smooth, glossy finish and when dry it retains its shape and size.

THERMOWOOD is another ideal choice for cladding. As a result of the ThermoWood process the typical characteristics of softwoods are improved to levels often found in tropical hardwoods; i.e. high durability and excellent stability. These properties are consistent throughout the entire cross section

Shakes and Shingles

Shakes and shingles are made from split logs and have an appearance more like timber tiles than boards. Shingles tend to look neater and more precise than shakes, which give a more rustic appearance. As a cladding material they look fantastic on both contemporary and traditional homes. Shakes are usually made from Western Red Cedar, giving them good durability, and can also be supplied pressure treated with preservative for enhanced protection.

ILLINGWORTH INGHAM (M/CR) LTD STOCK - Western Red Cedar Air Dried (Green) No. 2 clear & better.



For more information about cladding timbers or profiles - both stock and bespoke simply call 0161 872 1841.

Illingworth Ingham (M/cr) Ltd.

Village Way, Trafford Park,
Manchester, M17 1AD

Tel: 0161 872 1841
Fax: 0161 872 2501
Email: office@iitimber.co.uk

Branches:

Macclesfield | Hyde |
Stretford | Stockport