



Annual Report 2018-19

**GWINEAR-GWITHIAN
PARISH COUNCIL**

YOUR COUNCILLORS

Gwinear Ward

Cllr S Negus
22 Reawla Lane, Reawla, TR27
5HQ shirley.negus@ggpc.org.uk
01736 850832

Cllr R Norman
Parbola Holiday Park, Wall,
TR27 5LE [rosemarie.
norman@ggpc.org.uk](mailto:rosemarie.norman@ggpc.org.uk)
01209 831503

Cllr L Pascoe
19a Hayle Rd, Fraddam
lionel.pascoe@ggpc.org.uk
01736 850708

Cllr M Pryor
30 Willoughby Way, Connor
Downs, TR27 5FG
mark.pryor@ggpc.org.uk
01736 755146

Cllr S Rowe (Chairman)
36 Reawla Lane, Reawla TR27
5HH steve.rowe@ggpc.org.uk
01736 850181

Cllr J Tovey
17 Cober Crescent, Wall TR27
5HB jenny.tovey@ggpc.org.uk
01736 850513

Gwithian Ward

Cllr N Bawden
Gwlaskor, Penhale Rd, Carnhell
Green TR14 0LT
nigel.bawden@ggpc.org.uk
01209 832125

Cllr A Burt
8 St Nicholas Close, Upton
Towans TR27 5BZ [ann.burt@
ggpc.org.uk](mailto:ann.burt@ggpc.org.uk) 01736 602731

Cllr D Cupples
6 Horsepool Rd, Connor Downs
TR27 5DZ [dave.cupples@ggpc.
org.uk](mailto:dave.cupples@ggpc.org.uk) 01736 759283

Cllr T Homes
53 Churchtown, Gwinear TR27
5JL tyrone.homes@ggpc.org.uk
01736 850698

Cllr M Smith (Vice-Chair)
1 Treeve Court Connor Downs
TR27 5DQ
[mike.treeve_court@btinternet.
com](mailto:mike.treeve_court@btinternet.com) 01736 753887

One vacancy

Gwinear-Gwithian Parish - The Parish of Gwinear-Gwithian lies in the west of Cornwall, in the former Penwith District. The Parish covers 2,977 hectares, and stretches from the coastline at Godrevy Point down to Fraddam, incorporating the villages of Gwithian, Gwinear, Connor Downs, Carnhell Green, and the hamlets of Fraddam, Wall, Reawla, Roseworthy, and Upton Towans. The Parish is bordered by Camborne Parish to the north-east, by Hayle Parish to the west, St Erth Parish to the south-west, and Crowan Parish to the south. The civil parishes of Gwinear and Gwithian were combined to form the parish of Gwinear-Gwithian in 1934.

Chairman's Report

Much has been achieved by the Parish Council in the last 12 months.

The Neighbourhood Plan has been received well by developers and planners alike. We have seen small scale growth across villages in line with the wishes of the community. The plan continues to ensure development is of a scale and design as needed. We are mindful that there is a need for affordable housing in our Parish and work with developers and planners to ensure any provided meets our requirements.

The Parish Council put forward very strong views regarding the Electoral Review which was undertaken for the whole of Cornwall by the Boundary Commission. This Review will shape how our Parishes look in the future and we recognized its importance. We put forward good arguments as to why our Parish should not be split between electoral wards and our argument was recognized by the Boundary Commission. We are therefore in a very strong position now that the Community Governance Review (CGR) is about to take place across Cornwall, whereby Cornwall Council will decide how Parishes will look in the future.

We continue to maintain and monitor the six defibrillators around the Parish and have donated £1000 to each of our Primary Schools to purchase their own. Connor Downs Academy has already purchased theirs and Gwinear

Primary School should follow suit shortly.

One of the major objectives in our Parish Plan was to secure a long term base for the Parish Council, with good access for members of the community, I am delighted to say that we have achieved that. The Parish now has a community facility (as of March 2019) We will now embark on making the facility safe for all to use, with high quality flooring and equipment and I hope that next year we will be able to report how well it is being used, watch this space.

We are also committed to securing financial help for Highways projects across the Parish and continue to lobby Cornwall Council at the Community Network Partnerships regarding this.

Towards the end of last year the first phase of the refurbishment of Reawla Play Park was completed. We are delighted with the results and it is now an imaginative and inviting space for all age groups, particular thanks to all the volunteers we had help from.

I would also like to thank our Clerk and Admin Assistant for their constant hard work.

Thanks to all our Parish Councillors for their continued commitment and for the support we get from our Local Member for Cornwall Council, Lionel Pascoe.

Cllr Steve Rowe
(Chairman)



How the year shaped up

Annual Meeting of Gwinear-Gwithian Parish Council held on 14th May 2018

Cllr Steve Rowe was elected Chairman and Cllr Mike Smith Vice Chairman.

Membership of the Council

The council consists of twelve councillors, with six members representing each of the wards of Gwinear and Gwithian. Mark Pryor co-opted from 8/10/18.

The Council met 22 times in 4 differing venues in the Parish; of these there were:

- 20 Ordinary meeting
 - I Annual Parish Meeting
 - I Annual Parish Council Meeting
- Considered/observed 83 planning applications
- Received notification of 2 planning appeals; submitting additional representation when necessary
- Received 2 planning appeal decisions

The Council received presentations from :
Joe Taylor, The Wave Project – Gwithian Towans

Have representatives on 10 outside bodies & community groups

- i. Gwithian Green Advisory Group: Cllr Burt
- ii. Connor Downs Residents Association: Cllr Lawrence
- iii. Gwinear Hall Committee: Cllr Homes
- iv. Gwithian Residents Association: Cllr Homes
- v. Towans Partnership: Cllr Burt & Cllr Smith
- vi. Hayle Day Care Centre Trust: Cllr Cupples
- vii. Wall Hall Committee: Cllr Negus
- viii. Cornwall Council Beach Management Advisory Group: Cllr Burt
- ix. Community Network Panel: Cllr Homes, Lawrence & Bawden
- x. Speedwatch: Cllr Cupples

with members also attending:

- Gwithian Church remembrance service
- Gwinear Church remembrance service
- GGSCF – 2 members represent & attend meetings
- Reawla Park Working Group meetings
- Cornwall Council Electoral Boundary Review meetings
- Community Network Panel meetings
- Community Network Panel – Highways Projects meetings
- CALC 2019 Conference
- Cornwall Governance Review Working Group meetings
- Cornwall Council – Area Team Planning Update.
- Police Liaison Committee meetings
- Towans Partnership Sub-Committee meetings
- Cornwall Pension Fund Employers meeting
- Loggans Moor planning event
- Reawla Park opening event

with staff attending:

- Institute of Cemetery & Crematorium Management - Exclusive Rights of Burial Course
- Cornwall Rural Community Charity – Community Buildings Conference
- CALC Conference
- Community Network Partnership meetings
- Reawla Park opening event

2018 Events

- Electoral Boundary Review
- New CPO and Playground Management & Maintenance Contracts
- New LMP contract
- Community Planting Days - Reawla Park – 26th & 27th September 2018
- Reawla Park Project – opening day 9/11/18
- New Community Facility Transfer completed - March 2019

The Parish Council has supported

- Connor Downs Academy School – defib project £1000
- Gwinear Primary School – defib project £1000
- Our allotment holders and welcomed new tenants
- Gwinear and Connor Downs Primary Schools supplying Christmas Trees



- Reawla village, & CDRA supplying Christmas Trees
- PAROW & GDFBA
- GVA – Newsletter for the Gwinear Ward

- CDRA – Newsletter for the Gwithian Ward
- The Towans Partnership with funding for the Ranger Project
- Defibrillator Project – installing defibrillators across the Parish
- Gwithian Green Advisory Group (GGAG) supporting projects and grant aid



Reawla Park project

How the park looked before



Clearing and creating




Community Planting





The finished project



Project Updates - Bitesize

PROJECT NAME	INFORMATION	PROGRESS REQUIRED/NOTES
Cemetery extension	The PC owned Connor Downs Cemetery will only cater for another 20 odd plots. Going on current interment rates at this cemetery, could last up to 5 years. PC approved a strategy in Dec 2016 to look at possibility of extending the cemetery into the allotment. Parish Cllrs to consider allotment space being included in planning applications	Vacant plots cleared (Aug 18) CPO to keep area clear Secretary of State contacted (Sept 18) Evidence report approved (Dec 18) Confirmation that Secretary of State permission not required (Feb 19) PC to build up budget to create extension to include hedging, gates and lawned area
Defibrillators Funded with grants from:- 	Cllr Tovey & Bawden are the project leaders. PC given £10k grant from Big Lottery towards project. Cllrs will be responsible for maintaining & reporting on the defibs. Defibrillators installed in all Villages to include Connor Downs (bought and maintained by CDRA) Reawla, Carnhell Green, Gwinear, Gwithian, Gwithian Towans & Upton Towans (all bought and maintained by the PC)	Roseworthy & Fraddam BT kiosks adopted by Community Heartbeat Trust (Feb 18) PC to apply for grant funding for defibs in Roseworthy & Fraddam PC awarded £1000 to each primary school to get defibs. (June 18) Connor Downs School bought defib and received training on use. (Nov 18) Connor Downs School defib presentation. (Jan 19) Gwinear School defib-school considering project
Elizabeth Sampson Playing Field Connor Downs equipment	Look at replacing the diminishing wooden teen equipment. Consider type of equipment to replace:- Wood replacement Something completely different like workout equipment CDRA would be keen to work with PC Cllr Cupples, Smith, Lawrence and Homes agreed to form Working Group	Cllr Lawrence has joined group replacing Cllr Wilkins, group met and put together a questionnaire for village. 20 replies were received and the working group has been sent the results. Working Group recommendations agreed, WG to report back once further progress made.
New Parish Hall 	A new Parish Hall which will include 2 offices has been built as part of the development behind Pen Tye in Reawla (off Relistian Lane) The hall will be transferred to the PC. WG to report back to the PC – current members Cllrs Norman, Rowe & Negus.	(Aug 18) Solicitors instructed, awaiting report. (Oct 18) PC looking to sort various issues in the transfer document (Nov 18) WG applied for £10k grant for new flooring and other items, grant approved Jan 19 Transfer approved Jan 19, exchange date set for end of March 2019 Transfer completed end of March 19 PC to arrange flooring fitting, services such as phone, internet etc. PC to move in to office May/June 2019
Local Council Award Scheme (formerly Quality Council)	Criteria - At accreditation, at least two-thirds of the members of the council must have been elected. The clerk must hold The Certificate in Local Council Administration (CiLCA). Test 3 - Council Meetings (Mandatory) A council which is in touch with its community is expected to hold regular meetings.	PC has set up a working group of Councillors to review all the criteria and report back to the PC regarding the requirements needed to meet the award. PC working towards the second award-The Quality Award.

Project Updates - Bitesize continued.....

PROJECT NAME	INFORMATION	PROGRESS REQUIRED/NOTES
<p>Reawla Park</p> <p>Funded with grants from GGSCF & SITA</p>	<p>Parish Council successful in park being devolved to Parish level from Cornwall Council. (Aug 2016)</p> <p>Parish Council successful with grants from CC, SITA & GGSCF for refurbishment of half of the park (Jan 18)</p> 	<p>Park officially opened by reps from GGSCF & SITA (Nov 18)</p> <p>PC to set up 'Friends of Reawla Park' 2 members already found (Nov 18)</p> <p>Park Management contract started Jan 19</p> 
<p>Highways Projects</p>	<p>PC to consider projects from the Infrastructure Needs Assessment for possible funding from Cornwall Council which can be spent across the Community Network Area (CNA).</p> <p>CNA consists of Hayle, St Ives, St Erth, Towednack and Gwinear-Gwithian Parishes. Projects across these areas will be considered by Cornwall Council (CC) over a 4 year period.</p> <p>Projects put forward by Gwinear-Gwithian Parish Council (GGPC)</p> <p>Not in any particular order:-</p> <ol style="list-style-type: none"> 1. Dragons Teeth Roseworthy (outbound from Connor Downs) 2. Footway Connor Downs-eastbound between Greenbank & Gwithian Road on Horsepool Road 3. Parking issues around Connor Downs School 4. Parking issues around Gwinear School 5. General speeding Parish Wide – Mobile Speed Visor Scheme 6. Parking issues adj. to build out on Wall Road, Reawla 7. Speeding Issues Relistian Lane 8. Lighting Connor Downs 9. Lack of parking Connor Downs 	<p>Progress to date:-</p> <ol style="list-style-type: none"> 1. Agreed in principle by the CNA (community consultation required) 2. Project could be very costly, CNA agreed to breakdown the project and look at further 3. Agreed in principle by the CNA (community consultation required) 4. Different suggestions discussed but none came forward that were permitted under the remit given to CNA by CC for this highway project 5. Agreed in principle by the CNA, will be a cost to GGPC further consideration of this is required by GGPC as cost will be to community 6. Agreed in principle by the CNA (community consultation required) 7. Speed Radar results not showing an issue with speeding in this location 8. Cost deemed too prohibitive by the CNA and possibly not within remit, issues raised passed to lighting department of CC 9. CC/CNA consider no easy answer to lack of parking and no duty on Highway Authority to provide it <p>Any projects raised by GGPC will be considered against those brought forward from the rest of the CNA.</p>
<p>Community Governance Review</p>	<p>Following on from the Electoral Boundary Review, Cornwall Council (CC) will now start the Community Governance Review (CGR). The CGR is a review of the governance arrangements of all of the parishes in the CC area.</p> <p>Cornwall Council will embark on the first round of consultation regarding the CGR with Parish Councils in March 2019 with the community consultation taking place between Nov 2019 and March 2020 with the final recommendations being presented in Sept 2020.</p>	<p>GGPC set up a working group to consider the CGR and agreed a timetable as follows:-</p> <p>March 2019 - GGPC CGR-Working Group to agree timetable and scope</p> <p>April 2019 – Working Group to bring forward recommendations to GGPC</p> <p>May 2019 – GGPC Working Group to consult with other P&TC on plans</p> <p>June 2019 – GGPC to undertake public consultation</p> <p>July 2019 – GGPC to approve plans for stage 1 and submit to CC</p>

GWINEAR-GWITHIAN PARISH COUNCIL - Income & Expenditure Account for Year Ended 31st March 2019

<u>Previous Year</u>		<u>Current Year</u>
£	<u>INCOME</u>	£
80583.00	Precept	82511.00
4443.53	Council Tax Relief Grant	3652.53
247.70	Bank Account Interest	470.18
3087.19	VAT	788.61
333.81	Allotment Rent/Costs	337.36
3134.00	Cemetery	2788.00
4303.00	Local Maintenance Partnership (LMP)	4035.77
2455.95	Gwithian Green Local Nature Reserve	1403.40
109.27	Neighbourhood Planning	0
48.34	Administration	91.00
97.00	Reawla Park Project	35000.00
604.15	Petty cash in	0
800.00	Community Facility	10556.61
14.40	Election mileage	0
197.00	Grants/donations s137	394.00
36.12	Awards & Ceremonies	0
1.62	Petty Cash	0
<u>100496.08</u>	INCOME	<u>142028.46</u>
	<u>EXPENDITURE</u>	
618.80	Petty cash out	0
3991.53	Hall Hire/Office Space	3732.73
41093.82	Staff Wages/PAYE & NI/Pensions	43847.35
6712.72	Administration	6620.46
15773.73	Recreation/Street Scene	13881.54
1486.49	Burials	5203.21
397.00	S 137 Grant Payments	597.00
400.00	Other grants	520.00
3945.00	Local Maintenance Partnership (LMP)	4320.00
1446.46	Service Delivery	1926.46
1530.10	Gwithian Green Local Nature Reserve	1649.36
0.00	Youth Projects	10.00
0.00	Towans Ranger Project	500.00
7571.33	Reawla Park Project	79852.29
7558.61	Defibrillator Project (S137)	1000.00
295.00	Christmas Trees (S137)	295.00
0.00	Community Facility	300.00
206.00	CDRA Horsepool Project	528.00
440.74	Election expenses	0
303.54	Awards & Ceremonies	0
63785.52	Section 106 Streetscape	0
1024.46	Neighbourhood Planning	0
<u>158580.85</u>	EXPENDITURE	<u>164783.40</u>
		<u>127128.95</u>
	Balances as at 1st April 2018:	142028.46
	ADD Total Income	164783.40
	DEDUCT Total Expenditure	<u>104374.01</u>
	Balances as at 31st March 2019:	

Community Network - Highways Projects

Cornwall Council (CC) is working with Community Networks (CN) to have a greater influence in local and major transport schemes. Since April 2018, CN's have been provided with an annual budget of £50,000 to deliver their priorities for local highway improvement schemes. This is part of the Local Transport Plan and will be a four year programme. Our CN covers the Parishes of Hayle, St Ives, Towednack, St Erth and Gwinear-Gwithian. Some of the schemes we put forward for consideration may be approved as follows:-

1. Mobile Speed Radar for the Parish
2. Dragons Teeth going out of Connor Downs towards Roseworthy
3. Congestion at Gwinear Primary School
4. No Waiting At Any Time markings at Wall Road, Reawla
5. Traffic calming, Relistian Lane, Gwinear
6. No Waiting At Any Time markings around Connor Downs Academy School
7. Extend pedestrian walkways on the east bound side of Connor Downs

All of these schemes are in our Infrastructure Needs Assessment and the PC is working to secure funds via the CN for them all. This money can be allocated anywhere in the CN area and public consultation will be required before CC make a final decision on which projects to approve.

The Parish Council continues to:-

- Manage the cemetery and 20 allotment plots
- Manage ESPF in partnership with CDRA
- Secure funding for maintenance and annual works at Gwithian Green LNR
- Manage Reawla Park in partnership with the GVA
- Keep clear certain Public Rights of Way and weeds on highway footpaths
- Uphold the policies within the Neighbourhood Plan
- Drive forward the aims and objectives of the Parish Plan

Defibrillator project

The Parish now has 8 Public Access Defibrillators. The Parish Council manages the ones at:-

1. Reawla Stores
2. Mole Valley, Carnhell Green
3. Gwithian Towans lifeguard hut
4. Gwithian Village opposite Red River Inn
5. Atlantic Coast Park, Upton Towans

6. Hall for Gwinear, Gwinear

Connor Downs Residents Association manages 2 in Connor Downs village at Turnpike Inn and 46 Tresdale Parc, TR27 5DX.

The Parish Council has donated £1000 to each of our Primary Schools to purchase their own school defibrillator, Connor Downs Academy has already purchased theirs and Gwinear

Primary School should follow suit shortly.

The Parish Council will now seek grant funding for the hamlets of Fraddam and Roseworthy where defibs could be located within the two community owned BT phone kiosks.



Grants Received

National Lottery Community Fund Grant-£9948 towards community facility, Reawla Community Chest Grant Cllr Lionel Pascoe-£608.61 towards community facility Sita Cornwall Trust Grant - £35000 towards the Reawla Park Project

From other organisations

Local Maintenance Partnership funding from Cornwall Council to keep certain Public Rights of Way clear

Environmental Stewardship Agreement with Rural Payments Agents for managing Local Nature Reserve known as Gwithian Green

Grant Awards from the Parish Council in 2018/19

- Connor Downs Sunday School-folding tables £100
- Connor Downs & Gwithian WI-Vacuum Cleaner £120
- Connor Downs Residents Association-Christmas lights £100
- Connor Downs Residents Association-Bench £200
- Wall Village Hall-name sign £150
- Wall Music Festival-adjudicator £250



Hetty and Sue Team 1 W.I.

Parish Community Facility

One of the main objectives within the Parish Plan was to secure a long-term base for the Parish Council, with good access for members of the community. We are delighted to advise that we have secured a newly built community facility in Reawla as part of a housing development project.

Supported by

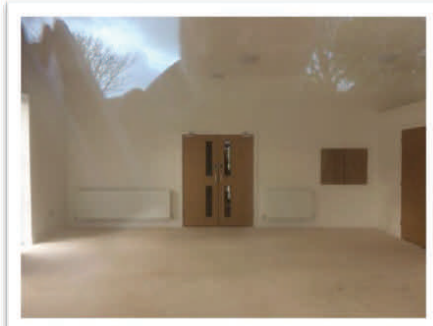
The facility was transferred to the Parish Council at the end of March 2019 and the Council have been successful with several grant applications for the facility totalling £11806 from the National Lottery Community Fund and the Cornwall Council Community Chest Fund. These grants will be used to kit out the facility with flooring, kitchen equipment, tables and chairs and lots of other essentials for the community to use the facility.



The facility will provide a permanent base for the Parish Council as well as a small separate office for community gatherings or corporate events. A hall with lots of storage, a serving hatch into the kitchen and two toilets, one with full disabled access and baby changing facilities.



The hall is off Relistian Lane, Gwinear, Reawla and we hope to have it ready for community use by June 2019.



Community Governance Review

Following on from the Electoral Boundary Review, Cornwall Council (CC) will now start the Community Governance Review (CGR). The CGR is a review of the governance arrangements of all of the parishes in the CC area.

The CGR will consider whether it is appropriate to make changes to parish areas and parish electoral arrangements; and potentially the alteration, merging, creation and abolition of parishes, the naming of parishes and the adoption of alternative styles for new parishes. It might also involve changes to the electoral arrangements for parishes (the ordinary year of election; the council size; the number of councillors to be elected to the council; and whether to divide the parishes into wards for the purposes of elections). In some cases it might be appropriate to group parishes under a common parish council.

There may also be a need to make changes that arise in consequence of the Review (termed “consequential matters”), and these might include provisions for the transfer of parish council staff, property and assets, or the

setting of precepts for any new parish councils that may be formed.

CC will be undertaking consultations with Parish Councils between March and July 2019 and with the community between Nov 2019 and March 2020 with the final recommendations being approved in Sept 2020.

We will be consulting with neighbouring Parish Councils over the next few months regarding the review and will consult with the community on any changes we propose should be made in June 2019 before submitting them to CC.

You can find further information on both the Electoral Boundary Review and the Community Governance Review via our website here - <https://ggpc.org.uk/governance-boundary-review-cornwall/>

and via Cornwall Council’s website here www.cornwall.gov.uk/council-and-democracy/elections/community-governance-reviews/

Contact - Gwinear-Gwithian Parish Council . Unit 3 Bosprowal Farm . Penhale Road . Carnhell Green . Camborne . Cornwall . TR14 0LU Tel: +44 (0)1209 614618 (Parish Office) . email: clerk@ggpc.org.uk . www.ggpc.org.uk Clerk - Mrs Vida Perrin

