



**HIWCF**

Hampshire and Isle of Wight Community Foundation  
Local giving for local needs

**Annual Review 2015**  
Local giving for local needs



*Nigel Atkinson,  
HM Lord-Lieutenant  
of Hampshire,  
President HIWCF*

## President's Welcome

I am delighted to welcome you to the Annual Review of the Hampshire and Isle of Wight Community Foundation (HIWCF) for 2015. Thank you for taking the time to read the report which shows our performance and achievements during the last financial year.

Helping vulnerable and disadvantaged people across Hampshire and the Isle of Wight is at the heart of the work of the Foundation. HIWCF has been able to continue its good work during 2015 with 494 grants made to charitable and voluntary organisations in the two counties. I hope you enjoy

reading about how this philanthropy is helping those on our own doorstep who need it most.

I would like to express my personal gratitude to our Chairman Tom Floyd, the Trustees of the Board and our Chief Executive, Toni Shaw. They have all helped to ensure that the Foundation continues to gain in strength and grow in reputation, through their dedication, resourcefulness and commitment.

A handwritten signature in blue ink, which appears to read 'Nigel Atkinson', with a long horizontal flourish extending to the right.

**Nigel Atkinson**  
HM Lord-Lieutenant of Hampshire,  
President HIWCF



Tom Floyd, Chairman HIWCF

“£10 million  
endowment”

## Chairman's Report

I have great pleasure in announcing that our endowment funds have now passed the £10m milestone, providing regular long term income to support our local charities and voluntary organisations. The Foundation provides a convenient and efficient service to donors who wish to support vulnerable and disadvantaged people; in particular we work with the smaller organisations who do so much good in our local communities. Our ambition is to raise endowment funds to £20m by 2020 and annual grant making to over £4m per annum.

During 2015 the Foundation focused on the three themes of 'Families in Crisis', 'Apprenticeships' and 'Small Grants, Small Items'; there is much more about each of these themes and the work we have supported in the pages ahead.

On behalf of all at HIWCF I would like to thank Carole Damper and Lena Samuels who stood down as Trustees, their hard work, knowledge and dedication have been invaluable. I am also delighted to welcome three new Trustees to the Board; Jane Sandars, Richard Prest and Virginia Lovell, each of whom brings different skills and strengths which will benefit the Foundation. My sincere thanks must also go to Nigel Atkinson for his continued support as our President.

A huge thank you to each and every one of our generous donors, without whom we could not continue our support for those in need in our community.

A handwritten signature in blue ink that reads "Tom Floyd". The signature is written in a cursive, slightly slanted style.

**Tom Floyd**  
Chairman HIWCF

# Highlights 2015



*Toni Shaw, CEO*

**“This year has seemed busier than ever, with donors setting up nearly £900k of new endowments creating even more funds to support our local voluntary and community groups. A substantial new fund was established by the Ford Motor Company providing support for employment**

**and community projects in Southampton. In addition a vital new fund from the Police Commissioner’s Office offered grants to small local projects that supported victims of crime and projects that addressed a reduction in re-offending. Through these initiatives, and others, our Foundation is growing stronger and building sustainable funds for the long term future of our communities”.**

**Toni Shaw**, Chief Executive Officer, HIWCF

## **This year we have...**

- Set up a new £500k Endowment Fund for Ford Motor Company
- Launched a £200k Small Grant programme for the Police Commissioner’s Office
- Enabled 77 local Fund Holders to support our communities
- Distributed £912k to 400 different groups supporting nearly 500 projects
- 102,399 people supported through our grants programmes
- Helped 464 vulnerable people struggling to survive winter or a family crisis
- Funded 12 apprenticeship placements within 12 different charities
- Supported 129 children in need with funds for school uniforms in Portsmouth
- Welcomed over 200 people to our HIWCF summer reception
- Published our Vital Signs covering ‘Housing and Homelessness’, and ‘Mental Health and Isolation’

**“This has been a challenging year for all charitable groups across the county and our Fund Holders grants have proved to be a vital source of income for these smaller organisations.”**

*Richard Hibbert, HIWCF Trustee*



*Guests at Summer Reception*

## **“Celebrating £5 million of Charitable Giving”**

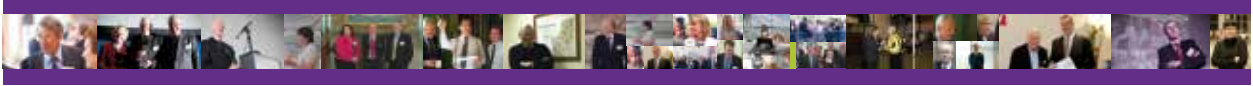
### **Annual Reception**

On the 15<sup>th</sup> July 2015 over 200 guests including our Fund Holders and voluntary and community groups from across the county helped us to celebrate £5 million of charitable giving. Since then further grants have seen our grant making reach an amazing £6 million.

**“This was a great opportunity to meet some of the trustees and staff and put faces to names.”**

*Annette Davis, Administration Manager,  
SCRATCH Charity*

# Real People Changing Lives



## What we do

We are an independent charitable foundation connecting local donors with the local causes and community projects that they care about. We play a leading role in the development of local philanthropy to support voluntary and community action across the county.

We are committed to strengthening the communities of Hampshire and the Isle of Wight by encouraging local giving for local needs:

- We manage charitable funds on behalf of individuals, businesses, Government agencies and other trusts.
- We make grants to charities and voluntary groups on behalf of our Fund Holders.
- We focus on smaller groups, where small amounts of money make a lasting difference.
- We promote the merits of charitable giving to the local community.

## How we work with Fund Holders

We are here to make it easy for you to donate money to local causes. We make sure your donations go where funds are really needed and will make a difference. We add value to your local giving by leveraging in other funds under our management and through understanding local issues.

**“HIWCF have now managed the Penton Trust Fund for four years and have done an incredible job ensuring money reaches those in need in our community.”**

*Sally Bashford, Penton Trust*

This year **our Fund Holders have supported 400 local groups** who have delivered some exceptional community projects for all ages and focusing on many different local issues.

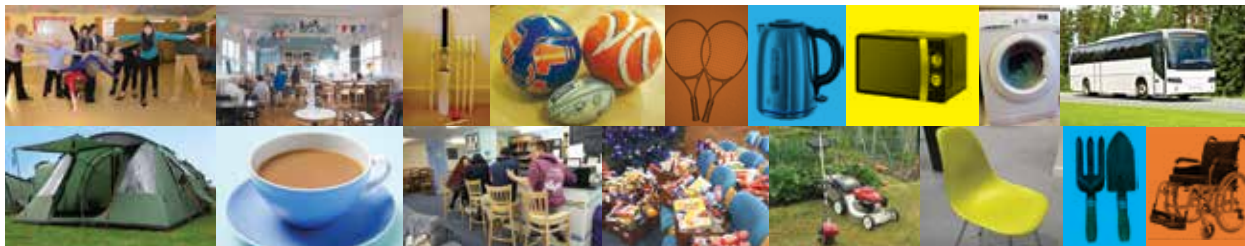
---

**Our Funds:** 3LS Community Fund, Alan Titchmarsh Fund, Alderman Joe Davidson Memorial Charity Trust, Basingstoke and Deane Community Fund, Basingstoke and Deane Community Leisure Trust Ltd, BAT Community & Legacy Funds, Binsted Trust, Blagrove Funds, Blue Lamp Trust, Bordon and Liphook Charity (Boltini), Brod-Lee Fund, Brian Gardener Fund, BSOP Funds, Charles Scott Fund, Civic Fund Portsmouth, Comic Relief Fund, Cowes Week Fund, De Zoete Fund, Destination Basingstoke, Doris Campbell Memorial Fund, Elvetham Estate Fund, First Wessex Funds, Floyd Family Funds, Ford Southampton Community Fund, Forever Hampshire Fund, Glenavon Fund, Gretel Funds, Hammerson Fund, Hampshire Hundred Fund, Hampshire Shrieval Fund, Hampshire County Council Older People's Fund, Hildon Water Support Funds, HIWCF Trustees Fund, Howard P Dyer Fund, Island Hundred Fund, IWCF Grassroots Fund, Jamie and Jenny Dundas Fund, Keep Warm Keep Well Fund, Larcomes Community Fund, Lee Grassroots Fund, Legge Family Fund, Lord Mayor of Portsmouth Charity Appeal, Mayor of Winchester 2013 Fund, Michael Shaw Memorial Fund, Montagu Neville Durnford & St Leo Cawthan Memorial Fund, New Forest Marathon Community Fund, New Forest Trust Visitors Gift Scheme, Nicholson Family Fund, North Hampshire CCG Wellbeing Fund, Oliver Crosthwaite-Eyre Fund, Orchid Environmental Trust, Paris Smith Fund, Penton Trust Funds, Police & Crime Commissioner Fund, Portsmouth City Community Funds, Robin Pilkington Fund, Rock Bottom Funds, Rotherfield Funds, Saints Foundation Fund, Scouting Assistance Fund, Simon Harrap Funds, Sir James Scott Memorial Fund, South Africa Lodge Fund, Red Funnel Funds, Southampton Chambers Fund, Sovereign Fund, Spectrum Fund, Spencer Family Fund, Three Parishes Community Fund, Watts Family Fund, Wightlink Funds.

## All Things Small and Beautiful

Our Fund Holders provided £20k to support 49 projects with a small grant of £500 or less. These small amounts of money have gone a long way to help our community groups buy those little things that make a big difference to their local activities. From sports equipment to comfy chairs, volunteer travel costs to hall hire, all of these small things are very much appreciated by local groups and charities and enable them to support vulnerable people.

**“It doesn’t always take a lot of money to fix things or at least some things.”** *Toni Shaw, CEO*



Travel to scouting camp heavy duty wheelchairs for disabled members during activities coffee machine for new charity cafe laptop for counselling bowling balls instructor for chair exercises dining tent for scouts PA system for village youth club gardening equipment for older people club travel for gymnasts cost of travel for walking group folding tables for village hall boiler for scouting hut tenor horn for town band fun-days for under-fives dance teacher for youth group sports equipment for youth group theatre trip for cancer support group tools for allotment association cognitive games to help recovery from brain injury.

**Supporting Funds:** Blagrove Trust, Hampshire Hundreds, BAT Community grants, Gretel Fund, Glenavon Fund, Forever Hampshire, Elvetham Estates Fund, Robin Pilkington Fund, 3LS Fund, Brod-Lee Fund, Scouting Assistance Fund and Paris Smith.



## Sophie's story

"A friend introduced us to Youth and Families Matter (YFM) back in early 2014 with the view of helping us through the minefield of applying for benefits. My husband was originally diagnosed with a grade three brain tumour in June 2009. He regained his 'health' quickly each time 'the dragon' as he called it returned but this time was different. YFM recognised we needed more help, support and guidance way before we did. I guess our denial and worry was masked by our very British 'keep calm and carry on' attitude. Practical advice and support from YFM's family worker has been invaluable; she has been on hand for every question and phone call and to help with all of the financial aid and advice needed. From arranging equipment loans for his disability, to enable us to be mobile as a young family. Hospital visits, benefit enquiries, shopping, care packages, meal deliveries and help with talking about illness and even dying to our three year old. These are just some of the ways this charity has helped us. It is difficult not to become emotionally involved with a family, but to gain the trust of an entire family unit during the most difficult and painful journey they have had to endure is special. Even towards the end of his life, YFM provided their time, expertise and practical support that we really couldn't have managed without. Even though our story doesn't have a happy ending, and my husband sadly lost his battle with his brain tumour at the beginning of this year, we are forever grateful for the support, love, care, advice, understanding, prayers and generosity. Thank you."\*

*\* These are the words from a family supported by YFM, names have been changed to protect the identity of those involved.*

**"They say charity starts at home and this one certainly does."**

*quote from Sophie's story*

### The YFM team has been there for the...

- ... child who can't go home after school
- ... family that has no food in the cupboards
- ... child who has to witness mum being beaten up by dad
- ... woman who is lonely, anxious and has no-one to talk to
- ... child who comes home from school to take a needle out of his mum's arm
- ... child who every day fights her suicidal thoughts
- ... man who has nowhere to live, no friends, no clothes, no anything
- ... child who has to eat cold food off the living room floor
- ... parents who are struggling to manage their children and have nowhere else to turn
- ... child who has just lost her dad

## Vital funds for Portsmouth Communities

**The Portsmouth City Community Funds have distributed £223k of grants to 79 organisations providing local community projects and support across the City.**



**“I am delighted that we have been able to help support some crucial projects being delivered by some amazing people working on the frontline in Portsmouth.”**

*Councillor Hugh Mason, Portsmouth Advisory Committee and HIWCF Trustee*

### Grants to Individuals

Working with our trusted partners Advice Portsmouth, Age UK, the Citizens Advice Bureau, The Salvation Army and the Roberts Centre, small grants were provided to help vulnerable individuals struggling to cope with fuel poverty, unemployment and family crisis. The grants were used for heating, food, transport, and even sleeping bags for homeless people. Further funds were provided through local primary schools to help with basic items of school uniform which some families struggled to provide. In addition, the Royal Naval Benevolent Fund was funded to provide financial support to local Portsmouth Veterans.

### Support for Twinning

This year the Caen Twinning Project Grant supported a school exchange between St Swithun’s Catholic Primary School in Portsmouth and its twin school in Caen. The opportunity provided the children with a wonderful experience to enrich their cultural appreciation and language studies.

## Hats Off To Bivol Trust

A grant of £1,560 enabled the Bivol Trust to set up a music group. Peter is one member of the group, aged 24 and he has cerebral palsy, some learning disabilities and is a wheelchair user. Peter is learning to play the keyboard and loves to play music with other people. He has practised new songs to develop his music skills and looks up new material for the group. This has all increased his sense of value and self-worth as he has become a central figure in the group. Usually a shy young man Peter has come “into his own” and relates much more easily to people; he has also just started a six week work experience programme looking at developing music activities within the Trust.

**“We provide local support for young people with learning and physical disabilities helping them to get out and about and get involved in a full social life in the city.”** *Dan Davies, Director, Bivol Trust*

Portsmouth City Community Fund comprises: The Burges Bequest, Edward Lawson Trust, Denis Connor Memorial Trust, Landport Educational Trust, Phylliss Loe/Sir William Dupree Trust, Scale Trust, Thomas King Trust, Whitcombe Trust, The Leon Emmanuel Watch Trust and the Zurich Trust.



*Bivol Trust Vintage Clothes Shop*

## Working Together

### Police and Crime Commissioner's Small Grant Programme



This innovative programme funded by the Police Commissioner saw 35 small groups from across the county receive grants to run local projects that help to reduce re-offending or provide support for victims of crime.

In the Aldershot area the Academy for Hard Knocks was given a grant of £3,000 to fund a martial arts course aimed at young offenders and those at risk of re-offending. The course helps the youngsters to move away from a life of crime, drugs, gang-related activities and anti-social behaviour.



**“Youngsters learn to negotiate solutions and solve problems as they arise and avoid trouble that they would normally walk right into.”** *Jo Emmett, CEO, The Source Young People's Charity*

Another group in Aldershot, the Source Young People's Charity, received a grant of £2,500 for their project to provide an experienced Counsellor for six months providing intensive mentoring to young people at risk of involvement in crime. The young people learnt how to manage stressful situations without resorting to aggressive or self-harming behaviour, resulting in more secure tenancies, a reduction in offending and improved family relationships.

# Working Together

## Comic Relief and Red Nose Community Cash

During 2015, we have supported both Comic Relief and the Red Nose Community Cash small grant programmes, distributing £159,675 in small grants to 69 separate local projects.

One of these projects is the Garage Youth Centre, a small youth group based in the New Forest receiving a large grant of £28,000 over two years. The project opened 13 years ago as a youth club running one night a week but has since grown in size and now offers services to the whole community and supports intergenerational activities - bridging gaps within their community. They aim to provide a safe space for young people who otherwise may not have anywhere else to go or anyone else to talk to. There is always a lot going on with regular open days and community events highlighting local issues from cyber bullying to self-worth and building confidence. They also run a Saturday Kitchen which looks at healthy snacks and healthy eating on a budget.



**“We support over 300 people living in our local community, giving them a chance to acquire new skills and knowledge to keep them safe and enhance their lives.”**

*Hayley Young, Youth Worker, Garage Youth Centre*

# Island Funds for Island Causes

**The Isle of Wight Community Fund (IWCF) has distributed £85,000 in grants across the Island. These funds have been targeted towards the most disadvantaged and vulnerable people on the Isle of Wight.**



*Freshwater Library*

## **Friends of Freshwater Library**

The Library received a grant of £1,430 to purchase new IT equipment to run presentations and courses in basic skills such as numeracy and literacy. The Citizens Advice Bureau and local credit unions have been able to use the equipment to help residents with personal finance issues, including budgeting, loans and promotions about loan sharks and how best to avoid them.

The free internet access that the library can now provide enables groups to work together on school projects, newsletters and blogs, while the

availability of ICT resources has enabled access for the whole community to fast broadband and life-changing information.

**“We wanted to help our older residents feel less isolated from the latest technology and with a little bit of training they can quickly email a friend or search for a new club to join.”**

*Margaret Sumner, Treasurer, Friends of Freshwater Library*

**Helping Hands:** Helping Hands is a small grants programme administered by Community Action Isle of Wight. Referring agents from housing associations and local charities can apply to the programme for a small grant to assist a client or individual who is in crisis or has an immediate need. The organisation received £2,000 during 2015.

**“Helping Hands supports some of the most vulnerable residents on the Island at a time of crisis or when things are changing in their lives and they need a little extra help.”**

*Philippa Daley, Development Officer, Community Action Isle of Wight*

**Carisbrooke Castle Trust:** Carisbrooke Castle Trust was given a grant of £1,000 for its project to capture and share memories of older people in residential care. The Trust recruited and trained staff and volunteers in the skills required to interact sympathetically with older people, particularly those suffering from dementia.

**“We were overwhelmed by the success of the project, and thank the IWCF for their faith in supporting it.”** *Judi Griffin, Chair of Trustees, Carisbrooke Castle Museum*

**Shanklin Youth Project:** The Shanklin Youth Project was awarded £2,000 to improve the provision of activities for all users at its centre, but in particular to help engage with young people and their families. The project enabled the younger members to gain new skills through dance and exercise, giving them access to quality facilities with good support and mentoring.

**“The increased confidence and self-esteem of the youngsters involved was lovely to see.”**

*Richard Priest, Voluntary Co-Leader, Shanklin Youth Project*

## GRANTS 2015 (values are shown in £)

1st Hordle Brownies	275	Andover Young Carers	3,187	Bold Balladiers Trust	975
1st Hordle Guides	275	Annuities PCCF	480	Bordon Charity	150
1st Lymington Guides	275	Apna Group	1,700	Breakout Youth	4,000
1st Milford on Sea Brownies	275	ARK Dickens Primary Academy	475	Breathtakers OB Trust	500
1st Milford on Sea Guide Unit	275	Arundel Court Nursery	700	Bridgemary Carnival Assoc.	1,000
1st Newport Boys' Brigade	900	Asian Welfare & Cultural Assoc.	500	Bridges Support Project	2,550
11th Andover Cub Scouts	350	Aspex Visual Arts Trust	2,995	Broadlaw Volunteers Group	2,860
11th Boys' Brigade	219	Aurora New Dawn	3,000	Brunel Monday Carers Group	500
2412 (Bordon & District) ATC	2,000	Barnardo's	1,272	BTC Rowing Club	2,855
2nd Bentley Scout Group	1,000	Barton Luncheon Club	1,000	Buckland Park Play Assoc.	6,062
2nd Chandlers Ford Scouts	500	Basingstoke Sea Cadets	1,067	Business South Ltd	2,000
2nd Lymington Guides	275	Basingstoke Food Bank	5,750	Busy Bees Pre-school	1,380
2nd Ryde Sea Scout Group	1,550	Basingstoke Ice Hockey Club	501	Butts Ash Community Assoc.	500
3rd Ventnor Scout Group	1,523	Basingstoke in Bloom	600	Caen Twinning	2,000
9th Lymington Sea Scouts	275	Basingstoke Mencap	474	Café Project	3,500
Abbotts Ann Green Action	500	Basingstoke NeighbourCare	2,000	Cage4All CIC	2,500
Academy of Hard Knocks	3,000	Basingstoke Parkrun	750	Carers Action Network	1,670
Advice Portsmouth	3,760	Basingstoke Voluntary Action	14,327	Carers Isle of Wight	500
Age UK Portsmouth	500	Basingstoke Young Carers	100	Carisbrooke Castle Trust	1,000
Age UK Southampton	13,620	Beneficial Foundation	14,726	Challenge and Adventure	4,000
Alamein Community Assoc.	3,000	Bentley Community Assoc.	1,500	Changing Tunes	3,000
Aldermoor Community Farm	4,922	Berkshire Comm. Foundation	14,300	Charlie Waller Memorial Trust	1,000
All Saints Parochial Church	318	BH Pegasus Badminton Club	996	Charter Academy	500
Allied Services Trust (AST)	1,196	Big Fish 117 Excellent Project	4,000	Chatterbox LGBT Club	500
Alton Community Association	500	Big World Impact	1,810	Children's University	2,500
Andover & District Mencap	3,500	Binsted CE Primary School	1,764	Chewter Close Residents Assoc.	955
Andover Child Contact Centre	2,395	Bishopstoke Street Pastors	750	Chrysalis	2,755
Andover Cricket Club	1,870	Bitterne Bowling Club	500	Church on the Roundabout	2,525
Andover Lipreaders	800	Bivol Trust - Comic Relief	14,833	CiSters	2,000
Andover Mind	3,500	Bivol Trust	1,560	CAB Basingstoke	13,500
Andover Town Band	500	Bobby Scheme	9,448	CAB Portsmouth	14,580
Andover Trees United	1,000	Bodster CIC	1,000	CAB Southampton	6,000



## £912,000 worth of grants

Citizens Advice Hampshire	4,501	First Wessex	1,000	Hampshire and IoW Wildlife	2,475
CLEAR	4,560	Fluid Motion Theatre	4,099	Hampshire Cricket Board	98
Community Action Isle of Wight	2,400	Flying Bull Academy	500	Hampshire Fire and Rescue	1,000
Community Court Pilot	1,000	FolkActive CIC	1,000	Hampshire Friends with M.E.	1,000
Community Fusion	2,415	Footprint Trust Ltd	2,730	Hampshire Playing Fields Assoc.	1,000
Community Playlink	1,000	Fortune Riding Therapy	275	Hampshire Police - Ryde	1,400
Compass Carers Support Group	1,000	Fredericks Foundation	5,000	Hampshire Riding for Disabled	4,000
Compass Counselling Service	250	Friendly Circle	500	Hampton Trust	3,000
Connors Toy Libraries	2,000	Friends of Basingbourne Park	5,000	Happy Bunch Over 70's Club	1,000
Cowes Baptist Church	7,839	Friends of Freshwater Library	1,430	Hart Food Bank	2,500
Cowes Sailability Club	1,000	Friends of In Touch Project	3,375	Hart Voluntary Action	3,000
Cowes Sailability Club	749	Friends of Jewish Refugees	596	Haslar Bosom Buddies	250
Crondall & Ewshot Village Group	750	Friends of Oakley Park	500	Hatch Warren Phoenix FC	1,850
Daisy Chains Isle of Wight	2,500	Friends of Polygon School Assoc.	500	Hatch Warren Runners	586
Deadwater Valley Trust	2,000	Friends of Surrey Court	2,000	Havant and East Hants Mind	1,450
Deaf & Determined	500	Friends of Family Winchester	2,500	Havant Youth Bowling Club	1,749
Depression Alliance Self Help	2,395	Frontline	6,000	Hazie Days	2,000
DofE Award in Hants	3,000	Frontline Debt Advice	560	Headway Portsmouth	445
Dorset Comm. Foundation	13,200	Furniture Helpline	2,500	Heart of Portsmouth Boxing	3,000
Duke of Edinburgh Centre	700	Garage Youth Centre	15,500	Hedge End Arts Club	500
Eastleigh & Romsey Mencap	4,000	Gift of Sight	5,933	Helping Hands	2,000
Eastleigh Fundays Group	500	Good Mental Health Co-Op	600	Helping Hands for the Blind	1,500
Eastleigh Men's Shed	500	Gosport Dis-Play Club	200	Helping Hooves UK Ltd	2,130
Eastleigh Street Pastors	1,000	Gosport Live at Home Scheme	1,500	Highcliffe Junior Choir	275
Eastleigh Youth and Community	3,000	Gosport Older Persons Forum	500	Hilsea Lido Pool for the People	2,000
Empshott Hut	1,000	Grateley Village Friends	500	Home-Start Andover & District	2,500
Enable Ability	3,000	Grayshott Cricket Club	1,700	Home-Start Butser	2,390
Endeavour Twirl Team	500	Groundlings Theatre	500	Home-Start Gosport/Fareham	2,500
Family Autistic Spectrum	4,000	Groundwork South	3,125	Home-Start Havant	1,508
Farnborough Grange Nursery	3,000	Guildhall School of Music	5,063	Home-Start Meon Valley	2,540
First Headley Scout Group	800	Hamble Monday Club	500	Home-Start New Forest	2,500
First Steps New Forest	5,000	Hambledon Village Hall	1,650	Home-Start North West Hants	4,000

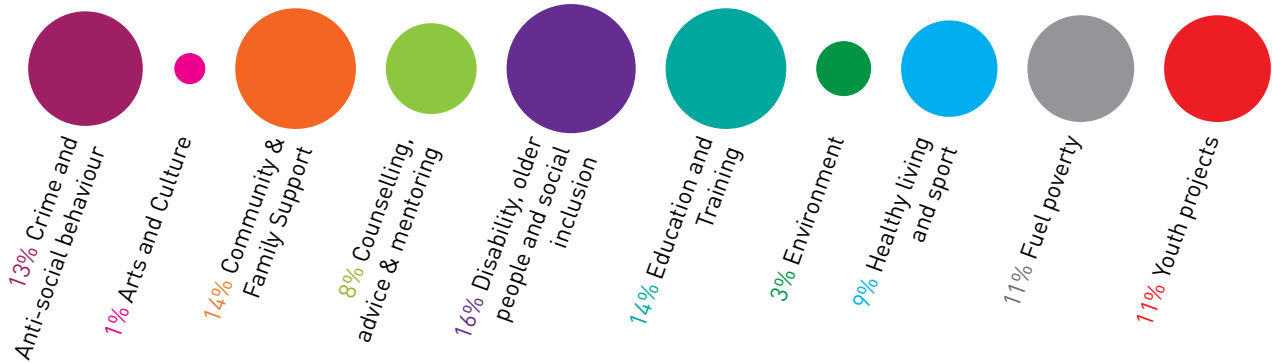
## 102,399 people directly benefited from our grants in 2015

Home-Start Rushmoor	2,500	Learning Links (Southern) Ltd	3,500	North End Playscheme	500
Home-Start Weywater	300	Lee ICANGO	1,131	North Lane Green Steps	327
Home-Start Winchester	3,500	Lily and Lime LD	1,000	Norwood Ravenswood	596
Hook Allotments Association	500	Lions Club Sandown/Shanklin	147	Ocean Youth Trust South	4,850
Hook New Age Kurling Club	1,500	Liphook Junior Federation	1,000	Odiham Voluntary Care Group	800
HOPE New Forest	2,500	Living Paintings	1,000	Off The Record	5,020
HOPE Portsmouth	3,000	Long Sutton Village Hall	500	Old Tauntonians Cricket U19s	194
Hospice Services At Home	1,000	Lord Wandsworth College	2,000	Olive Branch Counselling Centre	1,600
HWCA Warren Youth Club	1,000	Lordshill Youth Project	2,140	One Community	140
Inclusion Hampshire	2,600	Lost Butterflies Found	5,000	Oxfordshire Comm. Foundation	11,000
Independent Arts	3,000	Loud and Proud	100	Parent Link	2,500
Inspero	7,448	Lymington Sailability	500	PCC of St Philip Cosham	1,000
IoW Duke of Edinburgh's Forum	137	Lyndhurst Bowling Club	1,000	Peak Centre Trust	1,000
Island Separated Families	2,500	Maytree Respite Centre	1,000	Penton Trust Annuities	3,160
Isle of Wight Foodbank	1,000	MED3 Music Group	1,000	Pilands Wood Centre	500
Isle of Wight Street Pastors	2,395	Mencap Haylands Farm	159	Pink Place	1,500
It's Your Choice	7,500	Merryoak Computer Club	1,000	Polygon School	155
Jewish Care	596	Monday Lunch Club	200	Pompey Dial Ride	2,000
JNF Charitable Trust	232	Motiv8 South Ltd	4,724	Pompey in the Community	10,250
John Pounds Community Trust	2,000	Moving On Project	4,500	Pondhead Conservation Trust	2,500
John's Club Isle of Wight	134	Multicultural Forum	352	Portchester & Districts Assoc.	6,497
Junction 5 Money Advice	2,000	Music Fusion	2,408	Portchester Community Centre	500
Junior PCSOs Southsea	400	NASS Portsmouth	500	Portsdown U3A	500
KWKW 354 Winter Grants	22,019	New Forest Disability Information	2,500	Portsmouth Hebrew Congregation	5,516
KWKW Summer Grants	1,450	New Forest Land Advice Service	2,500	Portsmouth Assis, for the Blind	1,000
Kings Arms Youth Centre	1,890	New Forest Ninth Centenary	2,500	Portsmouth Carers Support	2,000
Kings Theatre Trust	1,200	New Forest Street Pastors	3,000	Portsmouth Cathedral	318
Kingsley Centre	1,340	New Forest Trust	2,500	Portsmouth Counselling	3,962
Kingsley Centre	660	New Milton Tangent Club	275	Portsmouth Deaf Association	1,318
Knightwood Youth Club	1,000	Newclose Cricket Ground	10,000	Portsmouth Family Welfare	318
Knowle Youth Project	1,767	Newport Minster Church Council	1,404	Portsmouth High School	3,000
Lady Sarah Cohen House	596	Niton Community Projects	2,300	Portsmouth Jewish Ladies	149
Langstone Sailability	2,000	No Limits Southampton	3,500	Portsmouth Mediation Service	2,985

Portsmouth Sail Training Trust	4,000	Source Young People's Charity	7,500	Ventnor Together	3,000
Portsmouth Scouts	2,000	South Wight Youth Theatre	829	Vine Day Centre Trust	500
Portsmouth Sings	500	Soton Children's Play Assoc.	2,923	Viva Carnival Club	1,000
Portsmouth Street Pastors	5,000	Southampton Hub	4,900	Volunteer Police Cadets	1,000
Portsmouth Stroke Club	1,000	Southampton Mencap	3,500	Warsash Over 60s Fellowship	625
Portsmouth Voices	2,000	Soton Sunday Lunch Project	1,000	Waterfall Trust	3,500
Portsmouth Young Carers	2,567	Southampton Vol. Services	4,500	Waterlooville Friendly Club	1,000
Princess Royal Trust for Carers	500	Southampton Women's Aid	2,445	Waterside Foodbank	2,645
Prospect Estate	3,500	Southern Domestic Abuse Service	4,818	Wednesday Junior Sailing	2,500
Radian Lifelink	960	Spirit Twirlers	1,000	Wellspring Charity	1,000
Read Easy Winchester	2,910	Spring Arts & Heritage Centre	3,166	Westside Community Assoc.	2,696
Relate Hampshire & IoW	2,500	St Cross Symondians Cricket	160	Wheatsheaf Trust	5,000
Ringwood Youth Club	500	St Edmund's Catholic School	768	Whitcombe Trust Annuities	640
Roberts Centre	6,114	St James Psychiatric Hospital	100	Whitehill & Bordon Partners	2,000
Romsey & District Young Carers	2,500	St James West End Lunch Club	500	Whitehill Village Hall	4,200
Royal Naval Benevolent Trust	5,000	St John's Primary School (PTA)	1,062	Whitehill WRVS Lunch Club	600
Royal Navy/Marines Charity	6,062	St John's Cathedral & All Saints	500	Wildern Opportunity Group	1,202
RSPB	1,500	St John's Primary School	275	Winchester 7th Scouts	1,500
Ryde Extreme Performers	2,000	St Johns Comeback Lunch Club	1,679	Winchester Art Club	593
Sail4Cancer	1,800	St Mark's Church Bordon	2,000	Winchester Go LD	1,000
SAFE	4,500	Step by Step	3,000	Winchester Hub	1,000
Saints Foundation	142	Storeroom2010	3,000	Winch. Live at Home Scheme	5,000
Salvation Army's Haven	6,482	Street Reach	5,199	Winch. Youth Counselling	4,000
Samaritans of Portsmouth	1,000	Streets Ahead	500	Witness Support Service	1,000
Sea Explorers	2,084	Stubbington Youth FC	500	Wolverines Cheer Squad	650
Seagarth Gardeners	500	Sudanese Comm. Portsmouth	1,350	Woolmer Forest Lions Club	500
SE Hants Community Outlook	2,242	Suki Aerobics Gymnastics	500	Wymering Kurling Club	674
Selborne Lunch Club	500	Tadley Community Assoc.	1,750	Y Services for Young People	5,000
Shanklin Voluntary Youth	2,000	Tall Ships Youth Trust (TSYT)	1,500	Yellow Brick Road Projects	3,205
Sherfield Park Runners	1,000	TAMBA	1,000	YMCA Fairthorne	2,368
Sholing Valleys Study Centre	500	Team Wiseman Boxing	1,000	Youth and Families Matter	7,186
Skye Close	1,272	Technion UK	149	Youth in Romsey	1,858
SEWSS	500	Teenage Drop In Centre	2,391	Youth Options	5,000
Society of St James	4,711	Thomas Morley Trust	2,000	Youth Project (Bishops Green)	2,090
SoCo Music Project	4,960	Transition Town Andover	480	YPI Counselling	1,600
Solent Youth Action	2,860	UKSA	3,532		

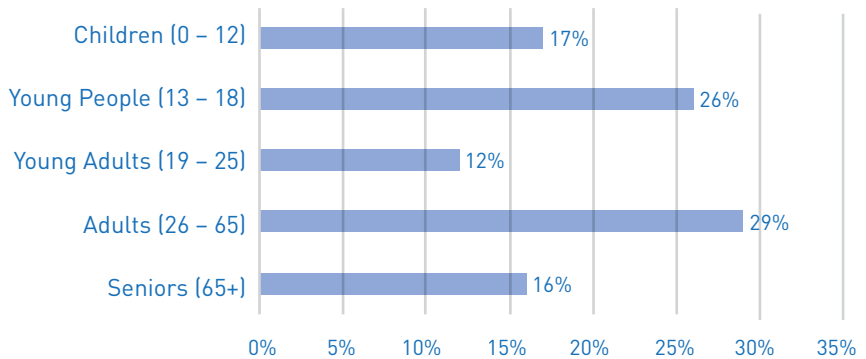
# Facts and Figures

## Types of projects funded



## Age groups supported

Over 50% of grants helped younger people under age 25



# Summary Financial Information

	Unrestricted Funds £	Restricted Funds £	Endowment Funds £	2015 £
<b>Income and endowments from:</b>				
Donations and legacies	80,563	650,256	892,764	1,623,583
Investment Income	10,198	-	368,180	378,378
<b>Total income and endowments</b>	<b>90,761</b>	<b>650,256</b>	<b>1,260,944</b>	<b>2,001,961</b>
<i>Expenditure on:</i>				
Charitable activities	143,372	912,237	-	1,055,609
Raising Funds	117,805	-	-	117,805
Other	17,034	-	-	17,034
Investment Management costs	2,042		33,591	35,633
<b>Total Expenditure</b>	<b>280,253</b>	<b>912,237</b>	<b>33,591</b>	<b>1,226,081</b>
Net income/(expenditure)	(189,492)	(261,981)	1,227,353	775,880
Transfers between funds	177,771	396,634	(574,405)	-
<i>Other recognised gains and losses:</i>				
Gains/(Losses) on Investment Assets	7,669	-	88,260	95,929
<b>Net movement in funds for the year</b>	<b>(4,052)</b>	<b>134,653</b>	<b>741,208</b>	<b>871,809</b>
Fund Balances brought forward at 1 <sup>st</sup> January 2015	241,331	138,067	9,507,271	9,886,669
<b>Fund Balances carried forward at 31<sup>st</sup> December 2015</b>	<b>237,279</b>	<b>272,720</b>	<b>10,248,479</b>	<b>10,758,478</b>

The full audited accounts are available from [www.gov.uk/government/organisations/charity-commission](http://www.gov.uk/government/organisations/charity-commission)

# Our People

## Hampshire and Isle of Wight Community Foundation People

### President

Nigel Atkinson, Her Majesty's  
Lord-Lieutenant of Hampshire

### Founder Patrons

British American Tobacco  
Hampshire County Council  
The Bulldog Trust  
The Ellis Campbell Charitable  
Foundation  
The Herbert & Peter Blagrave  
Charitable Trust

### Ambassadors

Dame Mary Fagan DCVO JP  
Alan Titchmarsh MBE, VMH, DL  
The Lord Chidgey  
The Rt Hon Earl of Portsmouth DL

### Chief Executive Officer

Toni Shaw

### Company Secretary

Georgina Grace

### Trustees

Tom Floyd (Chairman)  
William Cuthbert (Treasurer)  
Miles Brown  
Jonathan Cheshire OBE  
Carole Damper MBE (retired)  
Richard Hibbert CBE  
Rebecca Kennelly  
Cllr Hugh Mason  
Jonathan Moseley  
Lena Samuels (retired)  
Alistair Stokes  
Michael Woodhall

### New Trustees

Virginia Lovell JP DL  
Richard Prest  
Jane Sandars



*Jane Sandars*



*Richard Prest*



*Virginia Lovell JP DL*

# Thank You

We would like to say thank you to each of our Fund Holders and supporters for their continued commitment to the Foundation. Through their generosity we have been able to reach thousands of disadvantaged and vulnerable individuals across Hampshire and the Isle of Wight.

Special thanks go to our President Nigel Atkinson, Her Majesty's Lord-Lieutenant of Hampshire for his unstinting support. Our thanks also go to Hampshire County Council, Coffin Mew, Peter Dack at Dack Property Management, Hildon Water and Will Yates of Wise & Co for their ongoing support.

During 2015 our volunteers Moses and Alfie have very kindly donated their time and skills in the HIWCF office. They have been involved in a variety of work including grants, monitoring and finance. A huge thank you to Alfie and Moses, their efforts have been much appreciated by all of the HIWCF team.

Our final thanks go to our staff and UKCF for their dedication and commitment to the Foundation, enabling us to work towards a vision of a society in Hampshire and the Isle of Wight where local people actively seek to help those in need in our most deprived areas.

Thank You, **The Trustees**



*Alfie Selby, Research Volunteer*

"I really enjoyed my time at HIWCF, gaining an opportunity to build my research skills and independently producing a report for the Foundation."

*Alfie Selby, HIWCF Volunteer*



*Moses Murungi, Finance Volunteer*



**“We have chosen to work with HIWCF for their local knowledge and their expertise in the areas where our funds are targeted. The Community Foundation has strong working partnerships in the community, enabling us to provide technical, behavioural and life skills training for disadvantaged young people. This ensures that those most in need are able to overcome the barriers limiting their access to work.”**

*Alessandro Attansio, Human Resources Manager, Ford Motor Company ‘Ford Southampton Community Fund’*

**[www.hantscf.org.uk](http://www.hantscf.org.uk)**

**Hampshire & Isle of Wight Community Foundation**

Dame Mary Fagan House, Chineham Court, Lutyens Close, Basingstoke, Hampshire RG24 8AG

T: 01256 776101 E: [marketing@hantscf.org.uk](mailto:marketing@hantscf.org.uk)

Registered Charity Number 1100417 Registered Company Number 4534462

 [www.facebook.com/HampshireandIsleofWightCommunityFoundation](https://www.facebook.com/HampshireandIsleofWightCommunityFoundation)

 @ HIWCF

Quality accredited by  
UK Community Foundations  
to standards endorsed by  
the Charity Commission

