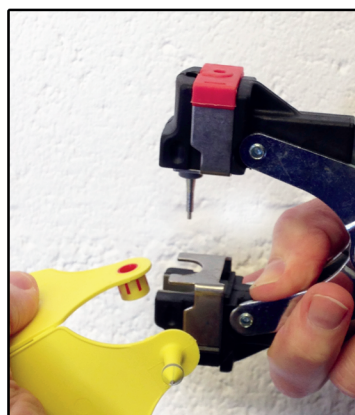
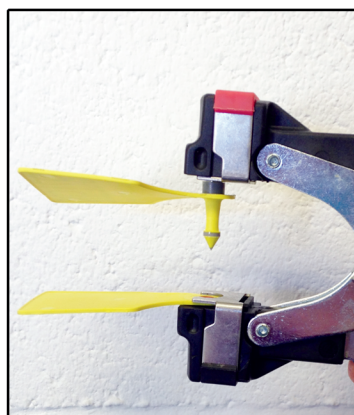


Visual & Electronic Tags Handling & Tagging Instructions



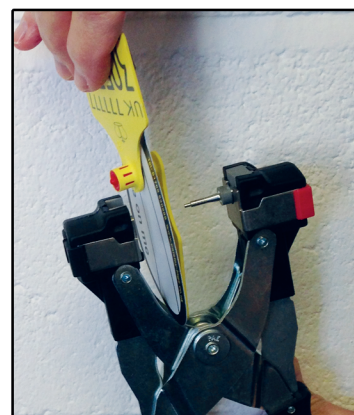
1 Load female first
Secure tag below clip



2 Load male second
Push onto pin firmly



3 Insert tag between two cartilage ribs
Close applicator fully
Audible click is heard!



4 Open applicator fully to release tag

Important tagging information

Always ensure that the female part of the tag is inside the ear

- ✓ Reduces the chance of the tag snagging or catching



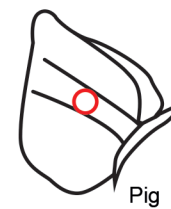
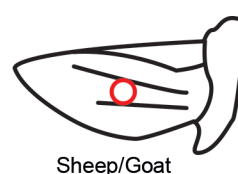
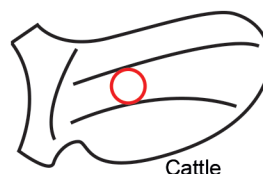
When tagging animal from the front use the hole in female jaw of applicator as a target

- ✓ Straight-line applicator action drives male & female precisely together
- ✓ Eliminates using male point to locate tag correctly in ear



Insert the tag between the two cartilage ribs.

- ✓ Recommended position



Apply tags under hygienic conditions

- ✓ Operator hands, the ear, the tag and the applicator should be clean
- ✓ Disinfect as necessary using an appropriate solution
- ✓ Fit in cool weather (where possible) to minimise infections
- ✓ Store unused tags in clean dry container

Check the ear after about 10 days for signs of infection

- ✓ Consult your veterinary surgeon as necessary

Always use correct applicator

Use Combo Strips

- ✓ Speeds up tagging
- ✓ Avoids inserting non-matching tags



Caisley™ Tags & Technology Copyright © 2015 Caisley Eartag Ltd. All Rights Reserved

Dalton
TAGS

T: 01636 700990 E: info@daltontags.co.uk W: www.daltontags.co.uk

Unit 2a, Manners Road, Newark, Nottinghamshire, NG24 1BS

Please see our website for the Ear tag Complaints/Comments form