



Clayworks

DESIGN DETAILING

for Clayworks Clay Plaster Finishes

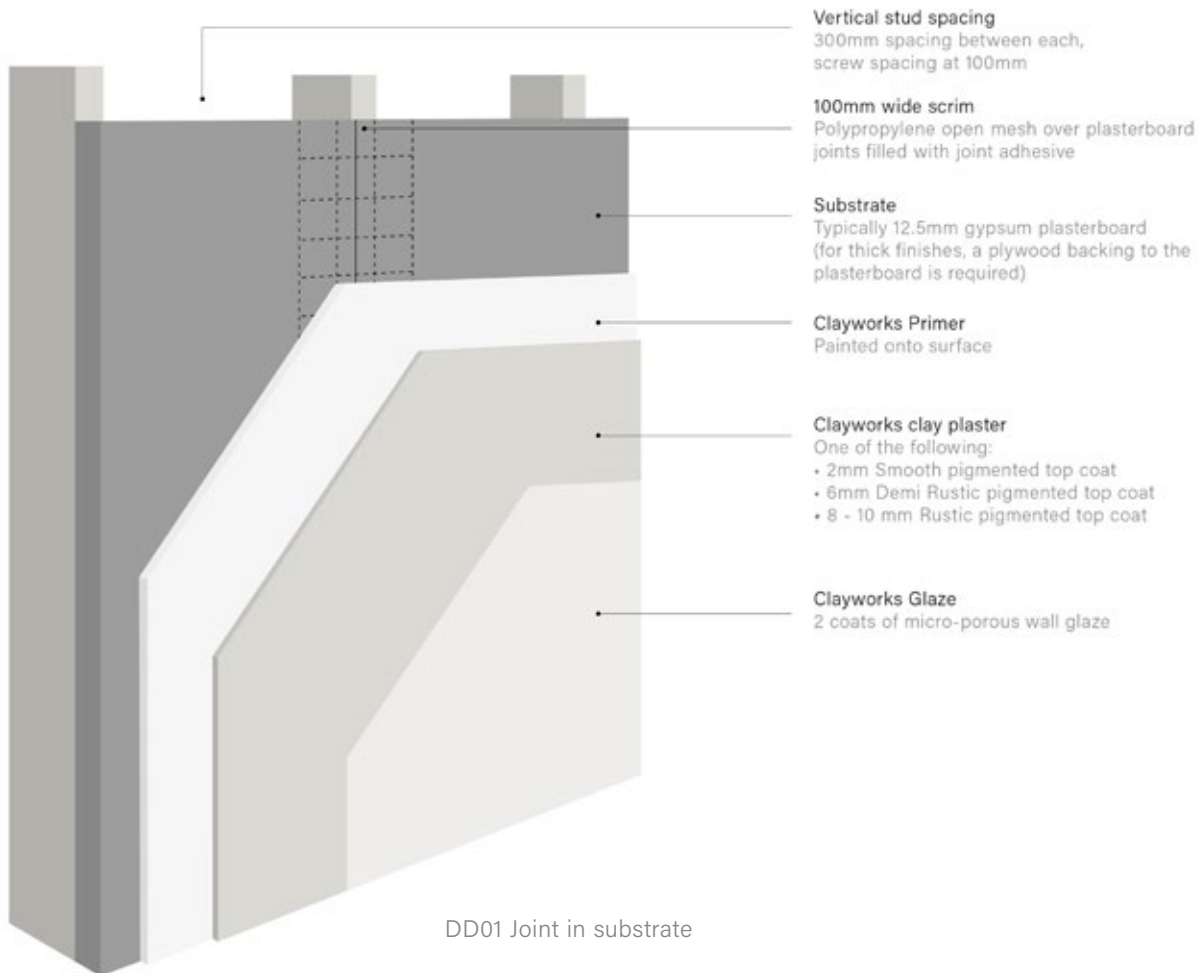
Natural Clay Plasters

Clayworks

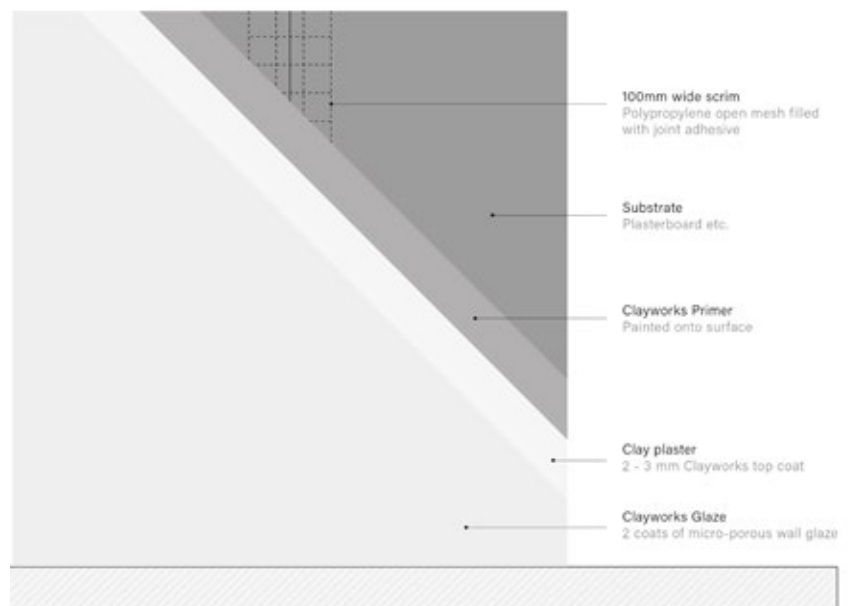
DESIGN DETAILING

FOR CLAYWORKS CLAY PLASTER FINISHES

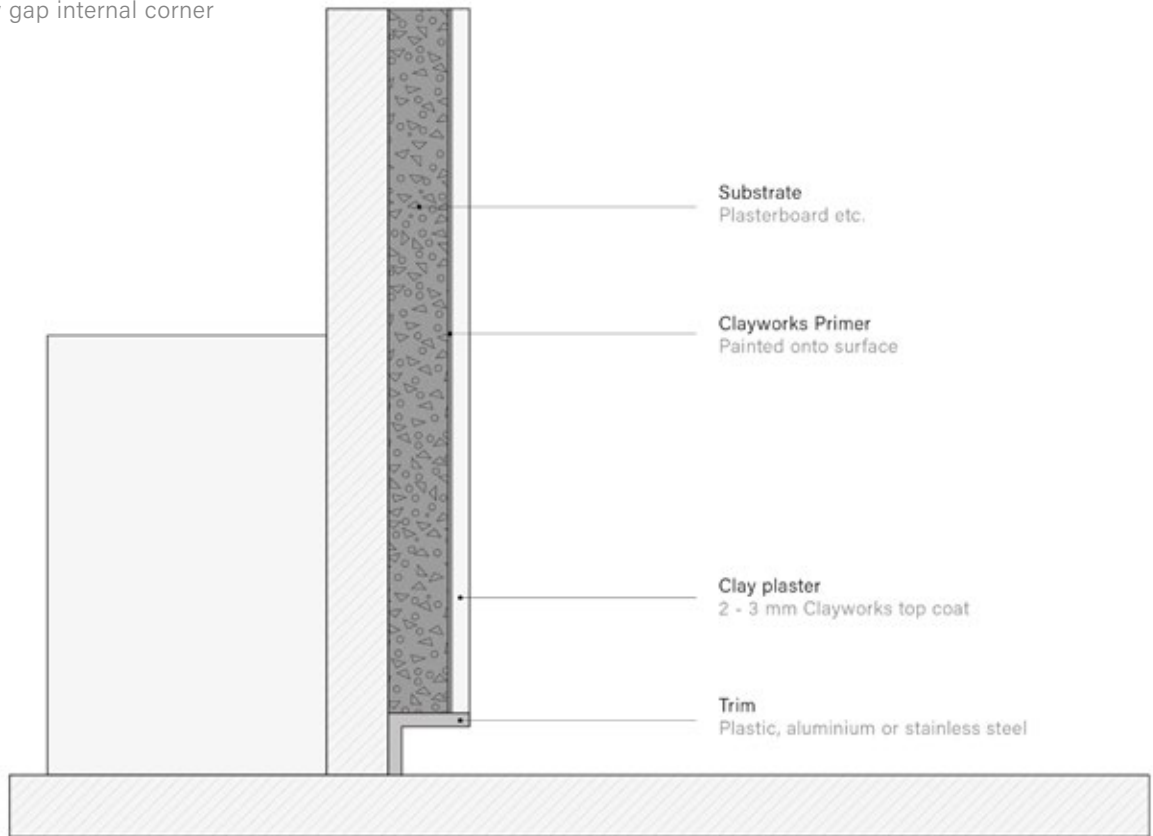
DD02 Top coat wall build-up



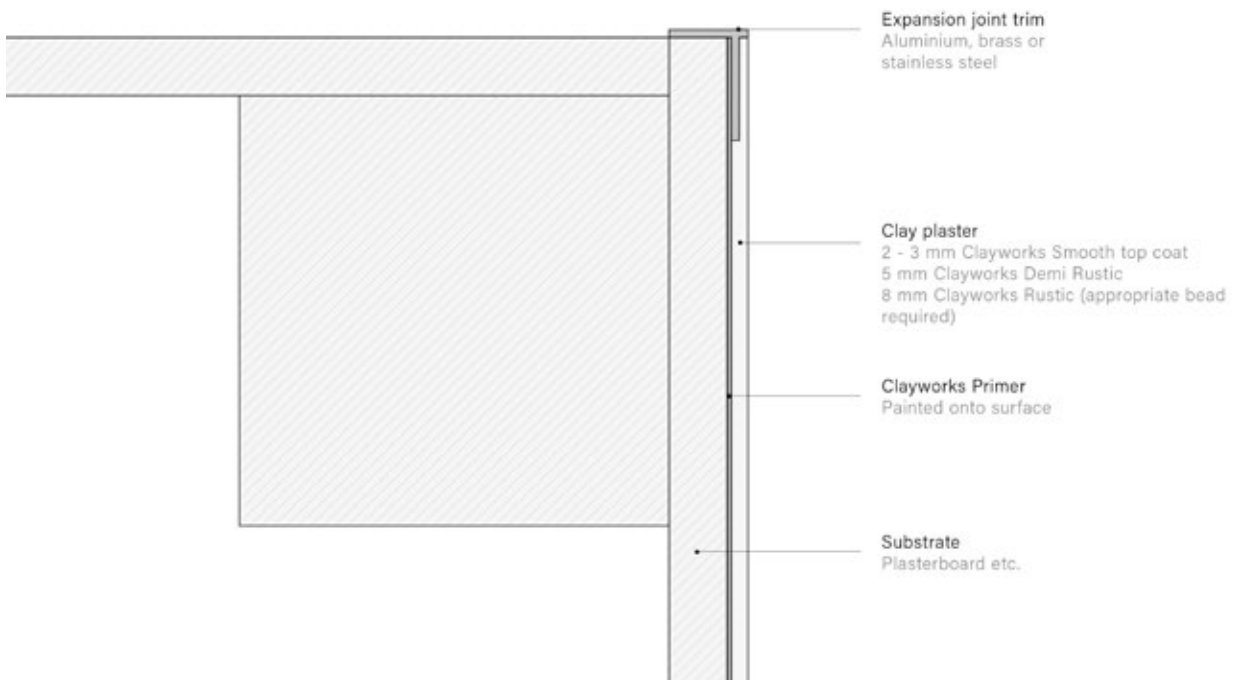
DD01 Joint in substrate



DD03 Shadow gap internal corner



DD06 Reveal trim



CORNER REINFORCEMENT

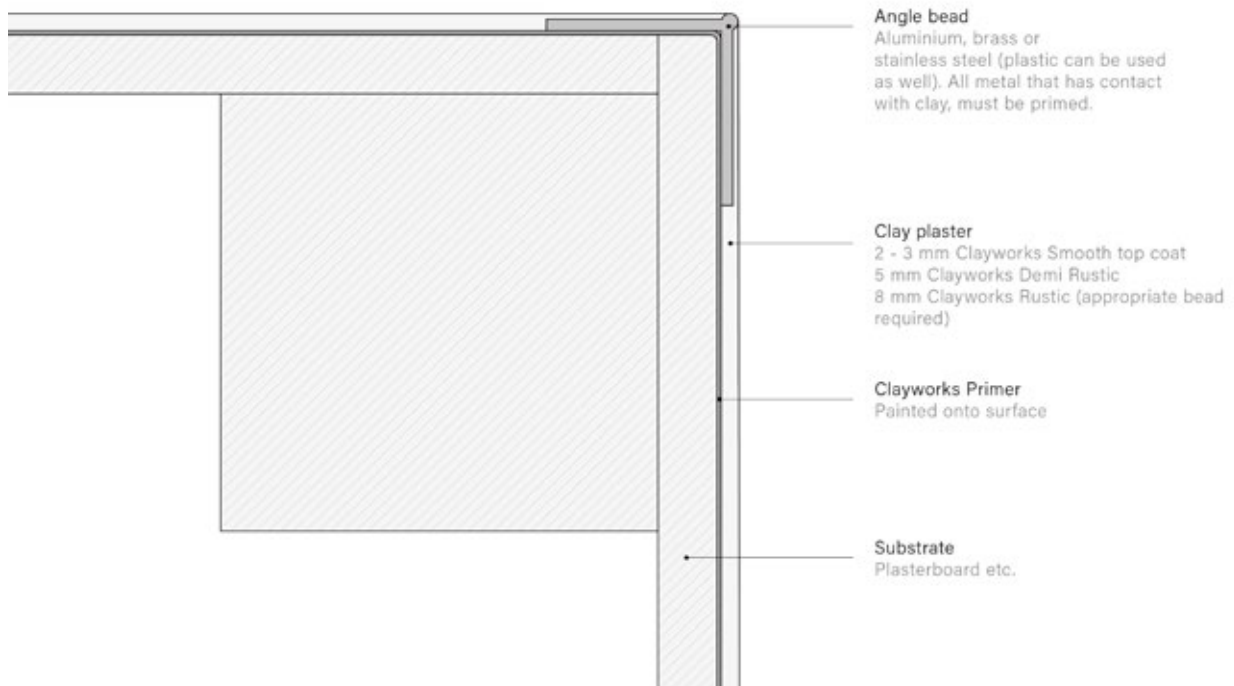
For primed plasterboard and other render carrying boards use either stainless steel, aluminium, plastic beads or glass fibre corner reinforcement mesh systems. If using glass fibre reinforcement corner mesh, corners can be rounded using limewall finish or a gypsum based backing coat.

All corner reinforcement materials **MUST** be primed on all areas with Clayworks Primer before Clayworks Clay Plaster is applied – paint onto the exposed areas of beading.

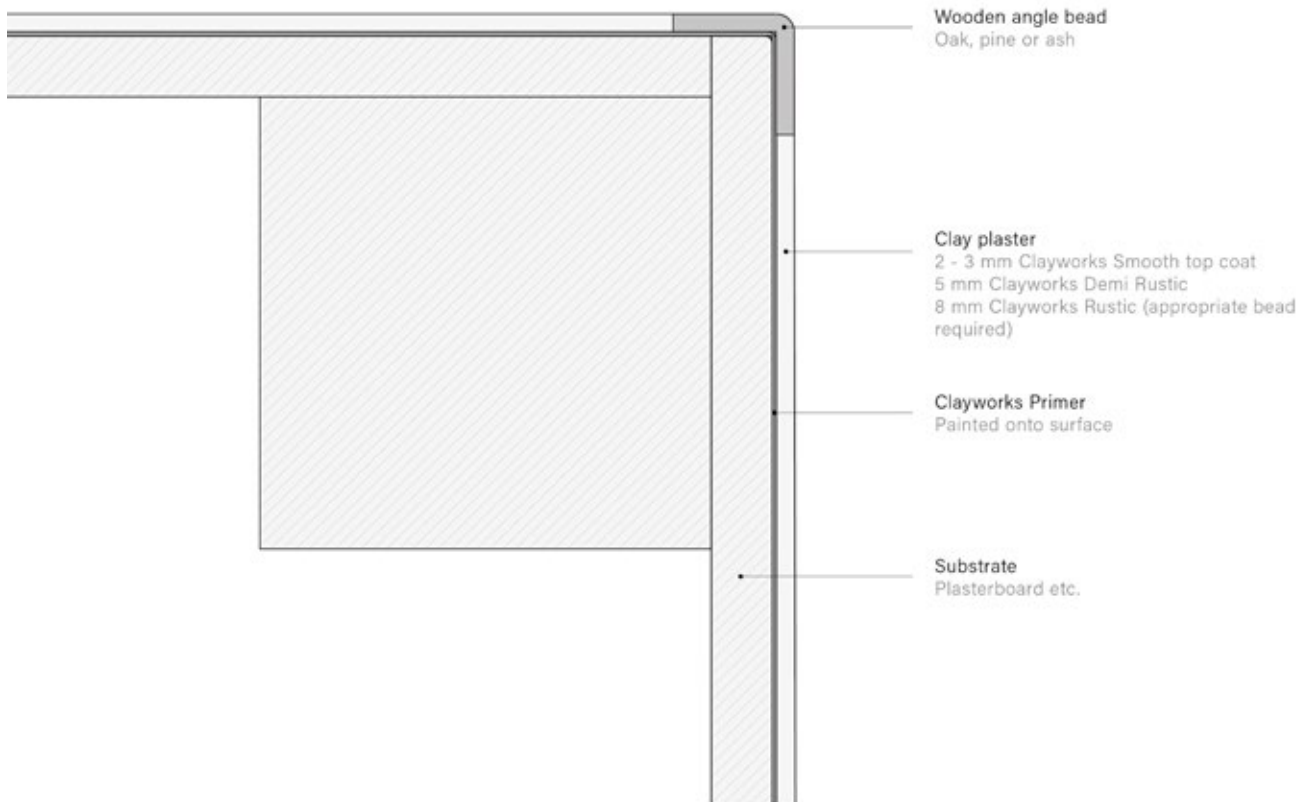
Plastic corner beading can be colour-matched through specialist suppliers (SAS Direct and LocusRite) to produce a seamless, durable corner.

A note on corners: rounding them off makes them stronger and decreases the risk of damage

DD04 Corner detail



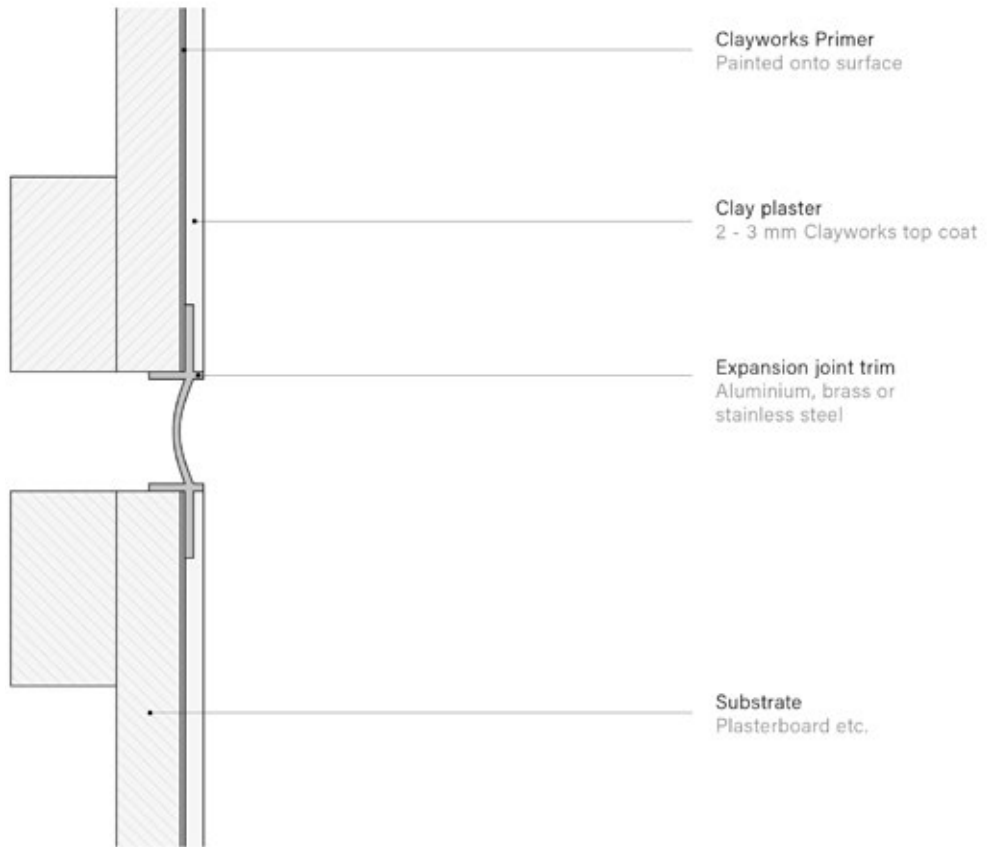
DD05 Corner detail



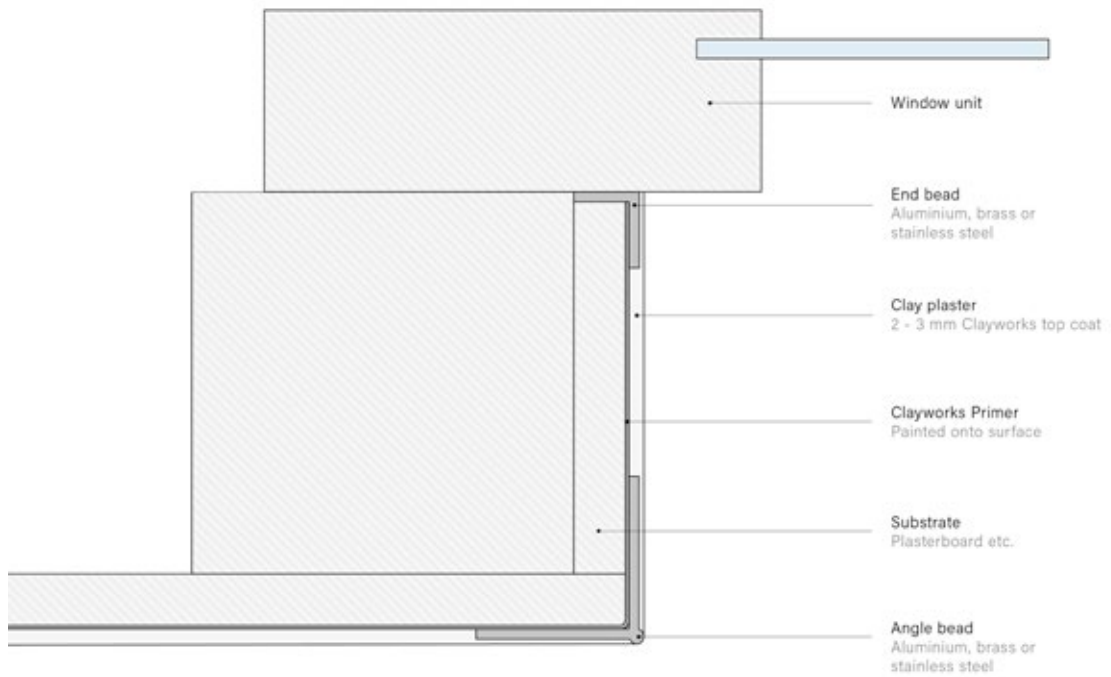
DD07 Wall-ceiling junction detail



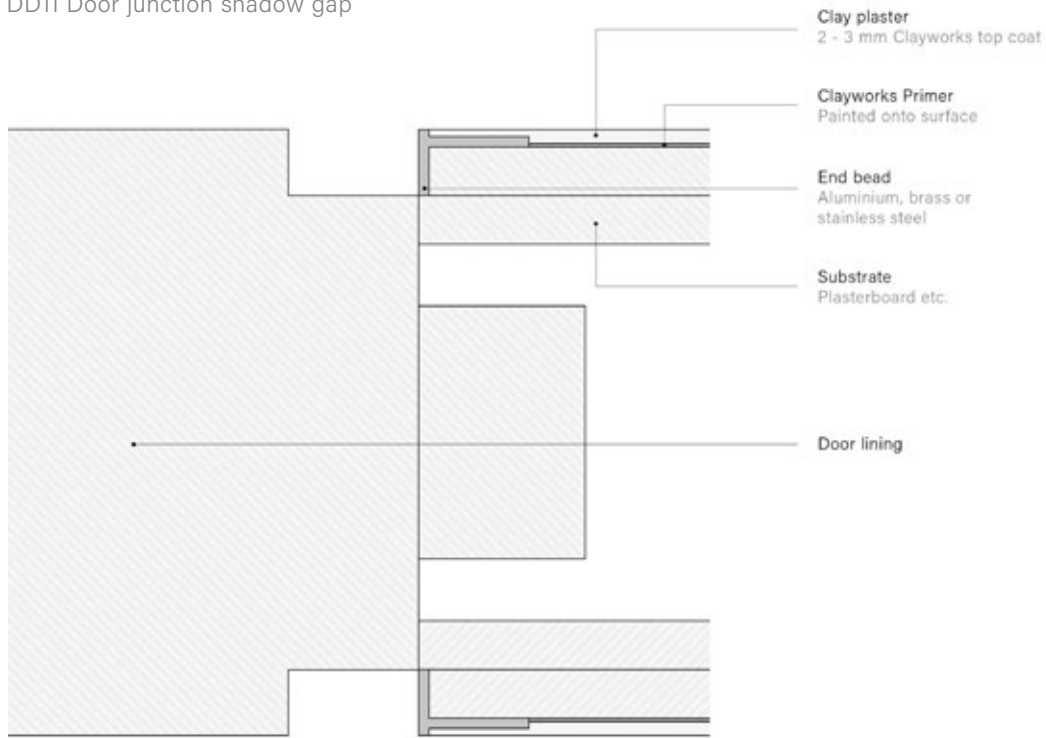
DDO* Expansion joint detail



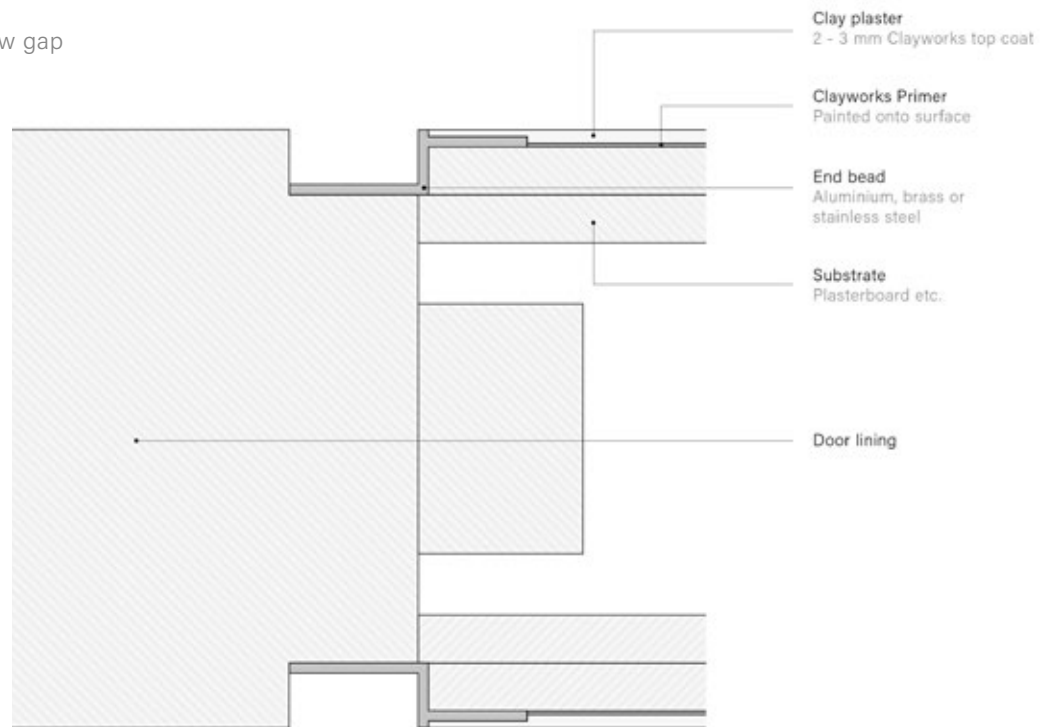
DD12 Window reveal detail



DD11 Door junction shadow gap



DD12 Door junction shadow gap



Higher Boden, Manaccan, Helston Cornwall, TR12 6EN, UK

+44 (0)1326 341339 www.clay-works.com info@clay-works.com