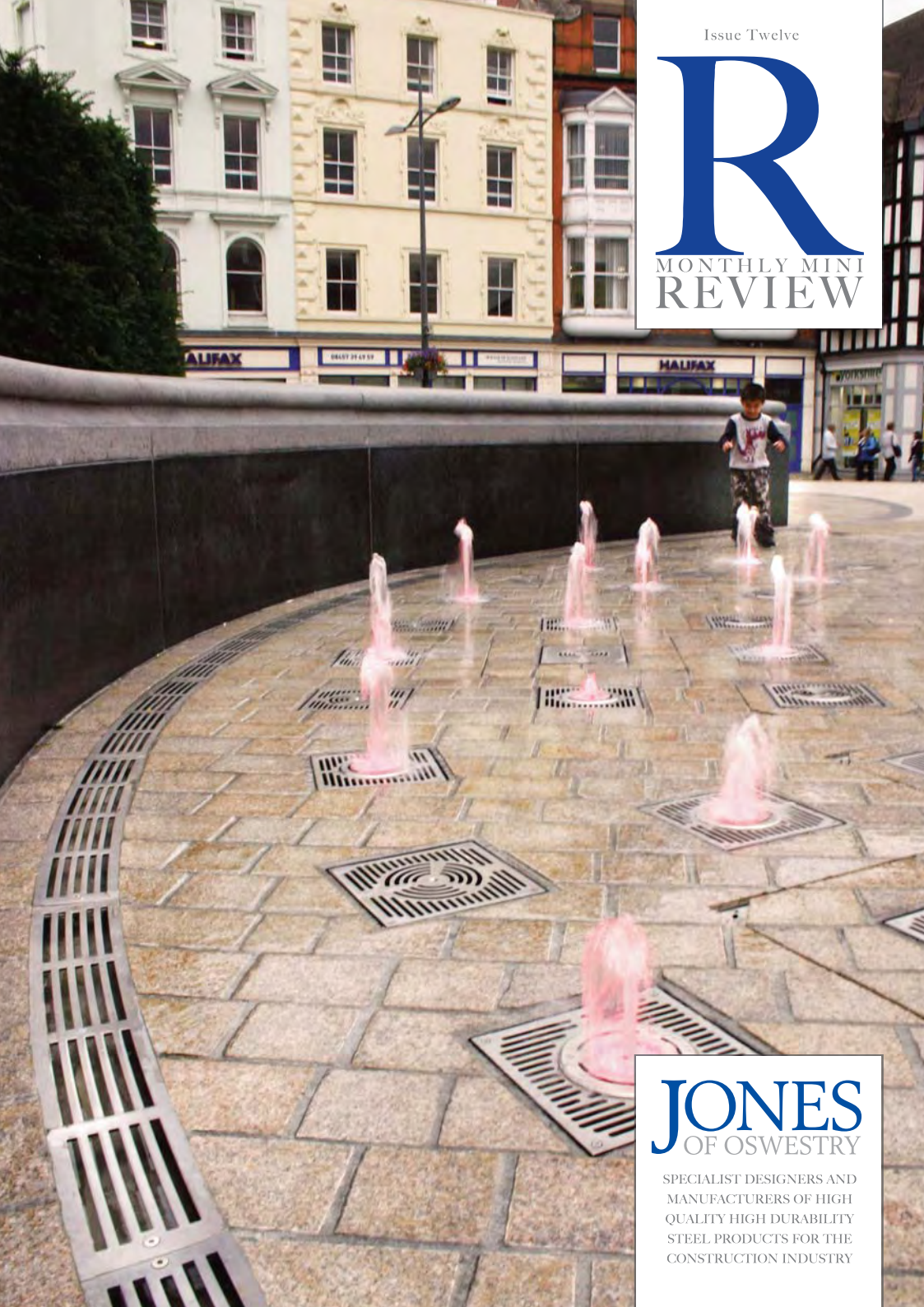


Issue Twelve

R

MONTHLY MINI
REVIEW



JONES

OF OSWESTRY

SPECIALIST DESIGNERS AND
MANUFACTURERS OF HIGH
QUALITY HIGH DURABILITY
STEEL PRODUCTS FOR THE
CONSTRUCTION INDUSTRY



City's New Landmark

Following several improvement programmes to their city centre, the residents of Wolverhampton are now enjoying a much more pleasing and accessible public space. The highlight of which is a spectacular multi-jet fountain.

Combining multiple segregated computer controlled and laminar flow jets with sequenced LED display the fountain is a visual feast.

Holding 10,000 litres of water the fountain was a complex 12 month build due to a series of underground pipes beneath the site. However, its launch in August was received well in Wolverhampton and the fountain has been hailed a new city landmark.

Importantly this is not a fenced off piece of public art, on the contrary people are actively encouraged to interact with the fountain – not hard to do with its enticing jumping arcs, jets and mist.

Jones of Oswestry products are key to ensuring the fountain keeps on being admired and used for generations to come after the company supplied its curved on plan Ventraflow product with integral drainage channel. It was specified by Ustigate the water display specialist responsible for the St Andrew Gardens fountain we reported on back in issue 2. Mark Richards from the company said: "We were very impressed with Jones' skill in precise manufacture, quality and overall fit that we had no hesitation in specifying Ventraflow for this project."

Location: Queen Square, Wolverhampton

Contractors: Ustigate



Knightsbridge Arborslots

Arborslot tree surrounds from Jones of Oswestry are amongst the high quality hard landscape materials chosen to transform a highly prestigious area of Knightsbridge in London. Located next to Harrods department store, Hans Crescent has until now lacked the aesthetic appeal worthy of its world famous surroundings.

Hans Crescent has been redesigned by Project Centre for the Royal Borough of Kensington and Chelsea. The design encompasses a range of high quality materials designed to work together for maximum visual appeal.

Paul Tagliarini, Urban Designer for Project Centre said: "This is a destination visited by millions of people every year so the creation of an accessible and inviting environment was paramount. Bespoke street furniture, the creation of a single surface paved in natural stone and the inclusion of new street trees all create a natural, relaxing ambience."

To fulfil this vision Jones of Oswestry supplied six bespoke Arborslot tree surrounds – one circular and five hexagonal to suit the special shaped stone infill being used in the scheme. Arborslot is particularly suited to projects of this calibre with each bespoke surround design and manufactured to a client's exact specification. Hot dip galvanised post production and coated with the company's unique DuraGalv coating, Arborslot will retain its looks and performance for many decades to come.

Now completed, the project has transformed Hans Crescent from a busy street dominated by its carriageway to an area more appropriate to its surroundings.

Location: Hans Crescent, knightsbridge, London

Contractors: Ringway Infrastructure Services

Architects: Project Centre



Classic Lintel Case Studies



Massive Pitched and Cranked Superlintel

Burkes Parade, Beaconsfield, presented a 'big lintel' challenge similar to Annabel's Nightclub (Review 4) with the architect seeking design innovation while accommodating the very mixed architectural mood of surrounding buildings.

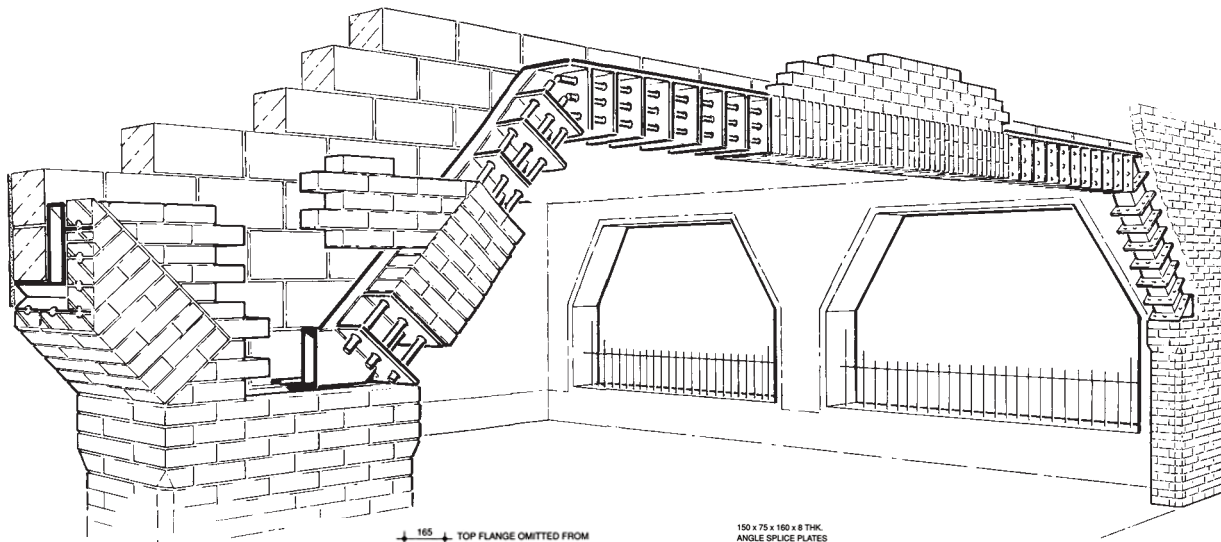
Burkes Parade provides 6000 ft² of office space and integrated garaging in two separate blocks. The scheme occupies a limited and irregular shaped plot of land dictated by planning restrictions relating to the site's historical use as a fire station which operated horse drawn tender.

Very distinctive to the design is the truncated pitched arch profile used for a variety of structural openings ranging from 3948 mm to 9390 mm. The 45° cranked ends make particular reference to semi-circular and sloped windows in adjacent buildings. On the ground floor this unusual profile dominates over very long spans, creating feelings of space and allowing an unexpected plane of vision through to the nearby railway.

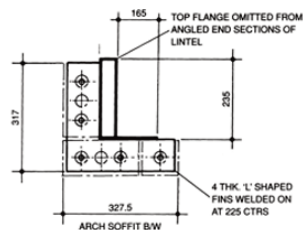
To accentuate these impressive spans the architect wished to incorporate a brick layer, and approached the structural engineer for a solution. Structural engineer, Chris Boydell, of Alan Conisbee & Associates, commented: "We looked at all sorts of clips and brackets, but there was no proprietary product that could be readily adapted to meet this brick fixed detail in the manner required by the architect. For the geometry requested, the only way forward was a special lintel design from Jones of Oswestry who we knew had the necessary design expertise and manufacturing capability."

The largest Superlintel required was manufactured in two halves to an overall length of 10.13 m. Sited over a garage opening, it is featured in our main illustration and in the colour photographs featured opposite.

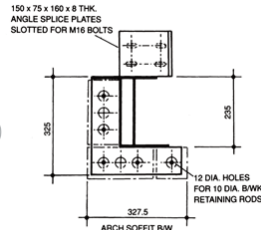
For the horizontal centre section of the lintel, a TCD profile suited the wall construction and loading, and provided two inner flanges for the seating of 7 cantilever brackets at 1.1 m intervals for connection to the adjacent steel beam. Angle brackets and T-pieces for connecting the two lintel halves could be similarly accommodated on the two flanges. It was necessary, however, to eliminate the external bottom flange and introduce an invisible means of brick fixing. By reversing a TCD section on the x-axis, the external bottom flange assumed the external upper for the positioning of L-shaped vertical fin plates for brick fixing (see Fig. 1). This facility is maintained in the cranked ends where the section reduces to a top hat profile stiffened by a channel closure (see Fig. 2).



(Fig. 1)



(Fig. 2)





Multi Award Winner Branches Out

The Adelaide Park Home Zone is a multi-award winning project in Stonehouse, Plymouth. Having scooped a 2007 Abercrombie Architectural Design Award, the scheme also won the Home Zone section of the Local Government News Street Design Awards in 2008, the same year it was shortlisted in the 'town regeneration' category of the RTPI awards.

Stonehouse is a historic part of the city; its streets were planned in the 1830's and followed architect John Foulston's designs for the area. However, it was clear the area needed a face lift and under the Home Zone scheme designed to create safer streets with slower traffic and more open space the area has been transformed.

The scheme in Stonehouse has included replacing patchy surfacing with clean new granite, new street lights, planters and easier access for pedestrians and walkers. Jones of Oswestry has supplied twenty six Arborslots for Stonehouse. These decorative tree grilles also protect the tree roots below the surface meaning the overall visual appeal of the street scene will be enhanced further as the years pass and the tree continue to mature.

JONES
OF OSWESTRY

T: 01691 653251

F: 01691 658222

W: www.jonesofoswestry.com