

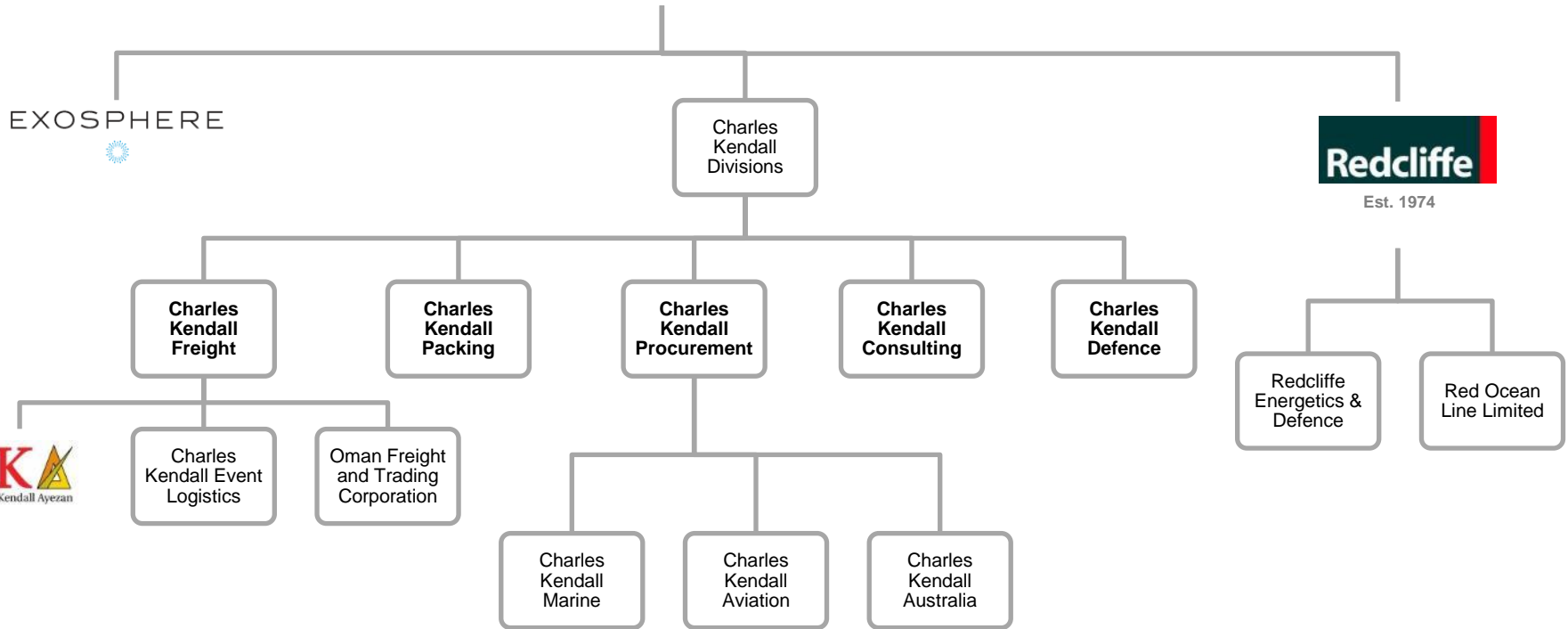
# An Introduction to Redcliffe International (Shipping) Ltd



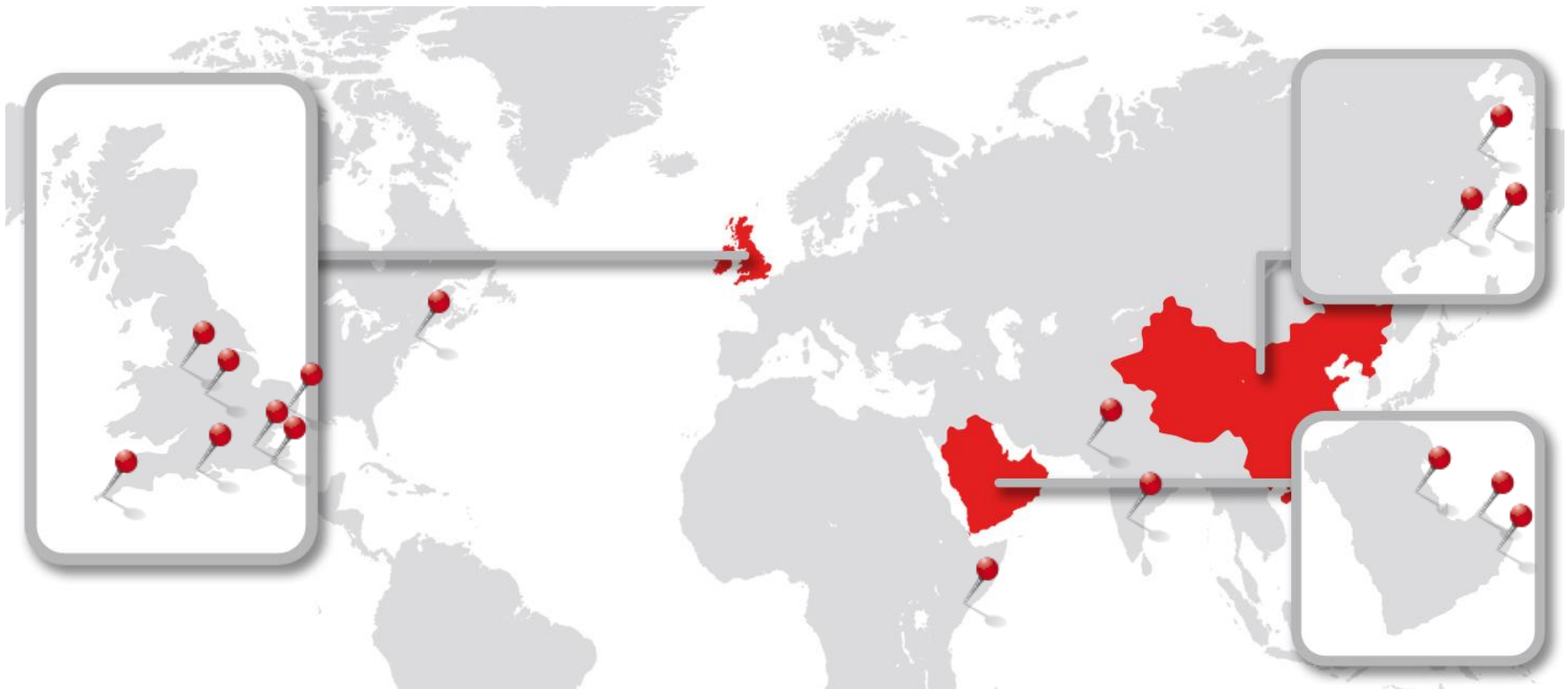
# Group Structure



Est. 1945



# Group Locations



- Redcliffe HQ – Watnall, Nottinghamshire
- London (Central) Charles Kendall Group HQ
- Heathrow
- Felixstowe
- Bournemouth
- Birmingham
- Manchester
- Southampton
- Dubai
- Muscat
- Bahrain
- Hong Kong
- Shanghai
- Kenya
- New York

# Redcliffe UK Locations

1. Heapey Storage
2. Faldingworth – Depot/Storage
3. Nottingham – Head Office,  
Depot/Workshop
4. Bournemouth
5. Newlyn - Storage

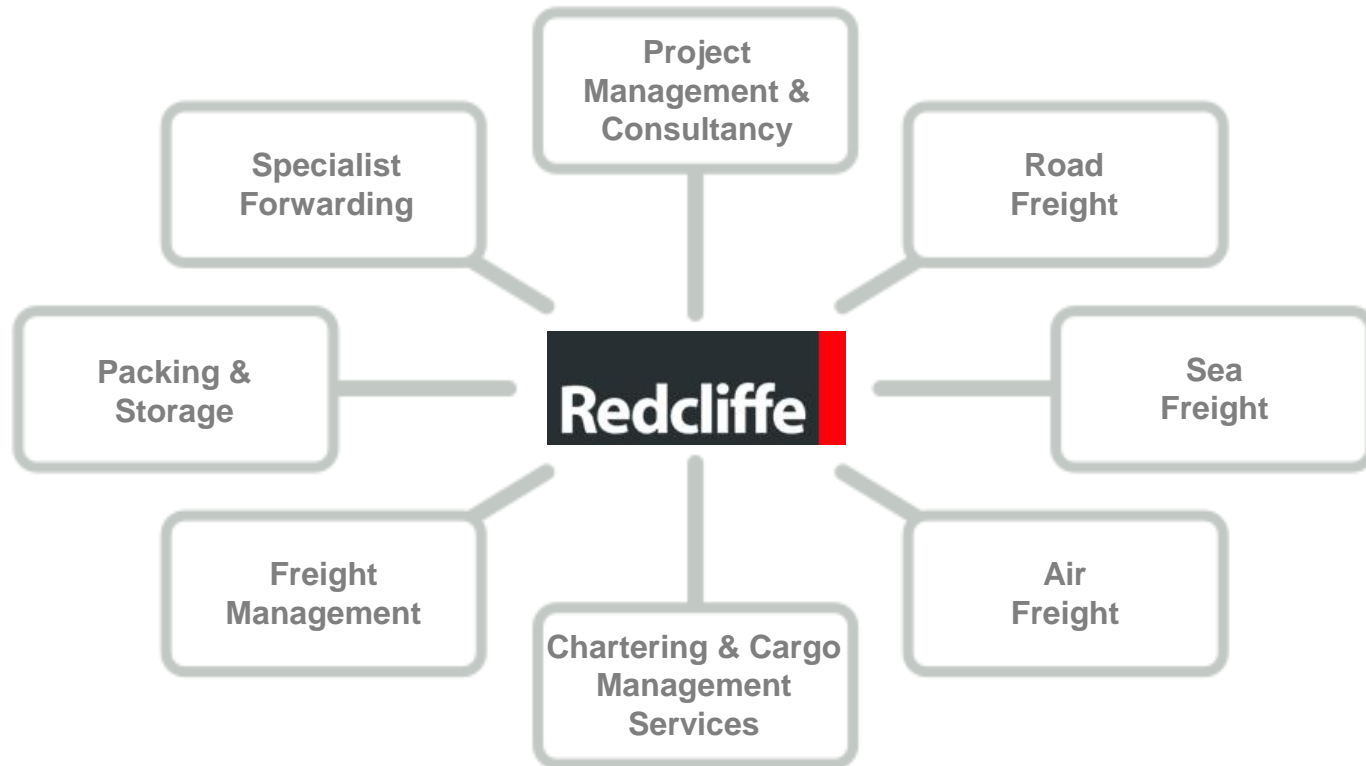


# Worldwide Military Locations



- Montreal
- Washington DC
- Exton
- Rio de Janeiro
- Valparaiso
- Madrid
- Rome
- Paris
- Antwerp
- Rotterdam
- Gdynia
- Zurich
- Vienna
- Gothenburg
- Tripoli
- Muscat
- Amman
- Jeddah
- Dubai
- Abu Dhabi
- Islamabad
- New Delhi
- Durban
- Singapore
- Kuala Lumpur
- Brunei
- Hong Kong
- Busan

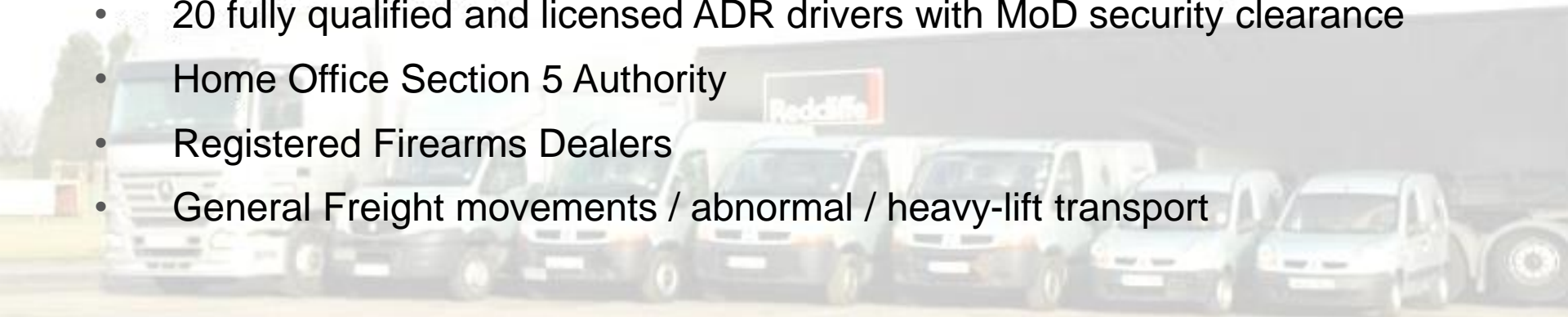
# Redcliffe Business Activities



50+ employees in 5 main locations across the UK

# Road Freight

- Direct access to 19 specialist vehicles and trailers for the carriage of explosives and weapons
- Owned vehicles that operate throughout UK and Europe - small vans to articulated trucks
- Flexibility – EX vehicles available at any time
- All fitted with permanent online vehicle tracking and communication systems
- Bespoke specialist designed cab and side loading vehicles/trailers leading ultimately to savings for customers
- 20 fully qualified and licensed ADR drivers with MoD security clearance
- Home Office Section 5 Authority
- Registered Firearms Dealers
- General Freight movements / abnormal / heavy-lift transport





# Ocean and Air Freight

- Global services for containers, Ro/Ro and Conventional/Breakbulk
- Proven method of transport from Europe to UK for explosives and articles
- Established European consolidation locations for hub and spoke service
- IATA registered and members of BIFA
- Experienced in the movement of military and non military cargoes
- Full links to HMRC for NES, NCTS and Import clearances





# Cargo and Freight Management

- Experienced in the Charter of Vessels for Class 1 explosive natures, military hardware and non military cargoes
- Cargo Management Services
- Cargo supervision
- Bracing and securing of cargoes
- Technical experience
- International forwarding of military / non-military cargo
- Group Company offices in the Middle East
- Group Company offices in the Far East
- Group Company office network in the UK
- Global network of partner agents with specialist knowledge
- Proven track record of working with competitors



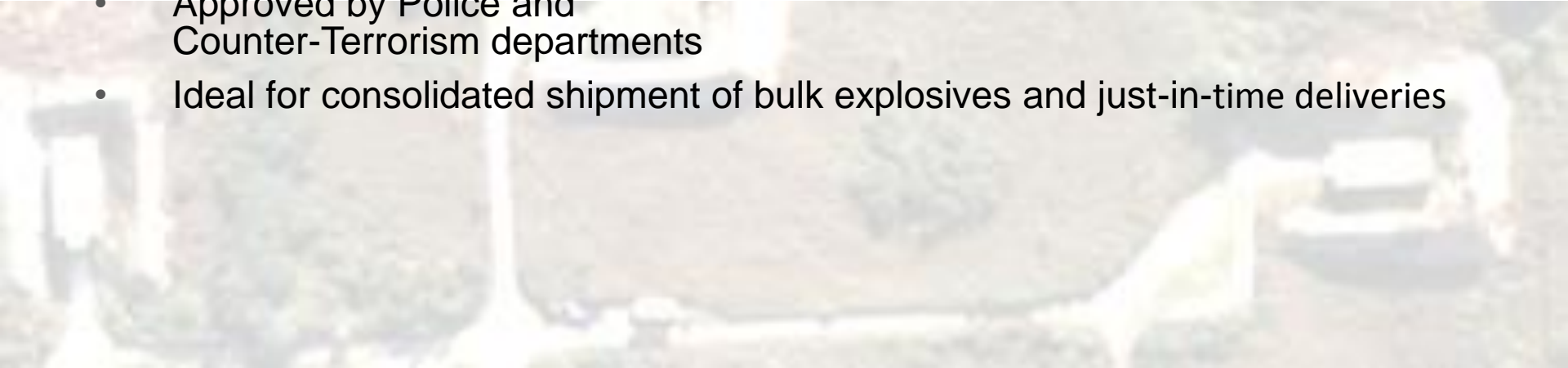
# Packing and Storage

- 48,000 sq ft of space
- Consultancy on labeling regulations (inc. hazardous)
- Warehousing and consolidation container loading and securing with provision for container inventory
- Production of detailed packing / stock lists
- Remote Packing Team
- Pick and Pack service
- ERTS - Enhanced Remote Transit Shed



# Explosive Storage

- 3 independent sites licensed by HSE. 383.3 tonnes total NEQ Class 1.1 & Section 5 materials
  - Heapey
  - Nelwyn
  - Faldingworth
- Detonator store at each site
- Secure fenced sites fitted with alarm and security systems approved by Police Explosives and Firearms dept.
- 24 hours / 7 days a week / 365 days a year access
- Close to the ports of Liverpool, Humberside and East Anglia
- Approved by Police and Counter-Terrorism departments
- Ideal for consolidated shipment of bulk explosives and just-in-time deliveries



# Specialist Forwarding



- Global network coverage
- Middle East logistics
- Iraqi specialists
- Dedicated Contract Managers
- Tailored Solutions
- Customs and Documentation:
  - Bespoke In-house services
  - Complete Letters of Credit handling
  - Issuing own “Liner” bills of Lading
  - Customs clearance
- License Expertise
  - Tracking
  - General Trading / Procurement
  - UNICEF experience
  - Insurance

# Project Management and Consultancy



- Project Management
- Risk Analysis
- Site & Route Planning
- Heavy-lift/abnormal load transportation
- Specialised engineering solutions
- Global network and strategic partnerships
- Over 60 years project expertise
- Skilled in sensitive, complex and security cargoes



# FMCG Capabilities

- Middle East experience that dates back to 1946
- Seamless global door-to-door logistics that combines international deep sea and air expertise with unique regional specialisation delivering unparalleled local value added solutions
- Inventory control and retail logistics
- Ability to significantly reduce supply chain costs
- Ability to deliver a full range of logistics services in the local market
- Risk reduction and/or elimination in the supply chain as well as removing significant costs within the supply chain budget
- Ability to take costs out of the supply chain through cost effective labelling and pre-market preparation
- Reduction in duty paid
- Reduce local handling costs in Dubai through site location in Port FTZ
- Eliminate unnecessary and premature payment of duty
- Competitive local and international logistics costs



# Contact

Redcliffe International (Shipping) Limited  
Suite 1, Field House  
Main Road  
Watnall  
Nottingham  
NG16 1LA

T +44 (0) 115 938 6286

F +44 (0) 115 938 9872

E enquiries @redcliffeshipping.com

www.redcliffeshipping.com