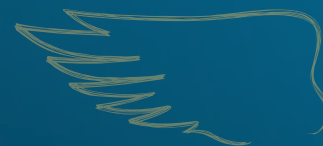




DK EXALTE

Registration Year 2015, UK

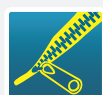
THE ESTABLISHED GROWER FAVOURITE



VIGOROUS ESTABLISHMENT



DOUBLE PHOMA RESISTANCE



POD SHATTER RESISTANCE

PRODUCT CHARACTERISTICS

GROSS OUTPUT	102 %
OIL CONTENT	45.5 %
EARLINESS AT REGROWTH	EARLY-MID
EARLINESS AT FLOWERING	1 2 3 4 5 6 7 8 9
EARLINESS AT MATURITY	1 2 3 4 5 6 7 8 9
PLANT HEIGHT	1 2 3 4 5 6 7 8 9
LODGING RESISTANCE	1 2 3 4 5 6 7 8 9
STEM STIFFNESS	1 2 3 4 5 6 7 8 9
POD SHATTERING RESISTANCE	YES
PHOMA RESISTANCE	1 2 3 4 5 6 7 8 9
LIGHT LEAF SPOT RESISTANCE	1 2 3 4 5 6 7 8 9

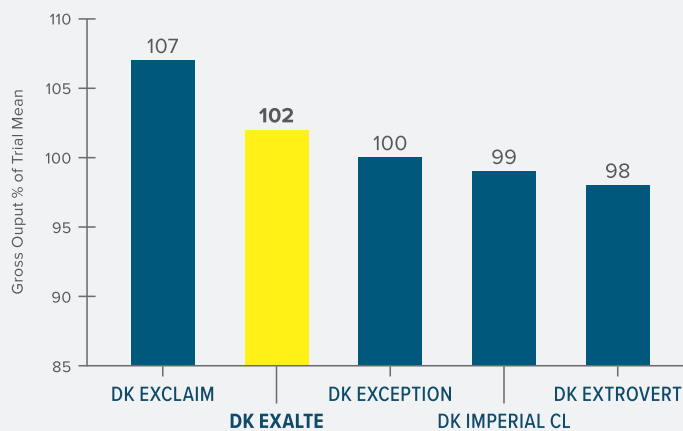
AHDB Recommended List 2017/18 Table 16 – Varieties not added to the RL.
Available from <https://cereals.ahdb.org.uk/varieties/ahdb-recommended-lists.aspx>

VARIETY BENEFITS

- 1 Rapid Autumn growth habit - suitable for drilling up to mid September
- 2 Very good combined Stem Canker and Light Leaf Spot Resistance
- 3 Pod Shatter Resistance

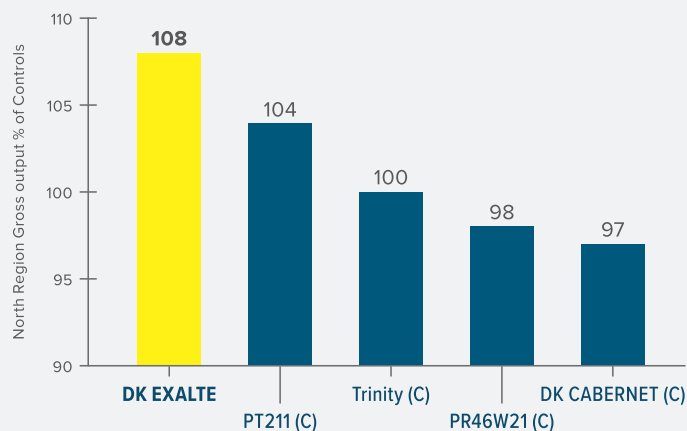
GROSS OUTPUT

DEKALB 3 YEAR REPLICATED TRIALS HARVESTS 2016-2018



Source: Extract from Dekalb UK replicated MidiFACT Trials Harvest 2016 3 sites, Harvest 2017 5 sites and Harvest 2018 2 sites. % of Trial Mean of all varieties entered in all 3 years.

AHDB RL NORTH TRIALS HARVEST 2016



Source: Extract from AHDB Recommended List 2017/18 Table 16 – full dataset available from <https://cereals.ahdb.org.uk> – note DK EXALTE not added to the recommended list.

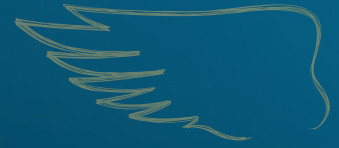
Contact us at uk.dekalb@monsanto.com or learn more at dekalb.co.uk



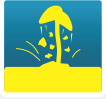
DK EXALTE

Registration Year 2015, UK

THE ESTABLISHED GROWER FAVOURITE



KEY TRAITS



VIGOROUS ESTABLISHMENT

Proven ability to establish robust, well-rooted plants that are best able to cope with challenging UK conditions.



RAPID AUTUMN DEVELOPMENT

Rapid Autumn growth habit means that as well as being suitable for the main drilling window it can be the ideal variety for delayed drilling or less than ideal conditions.



DOUBLE PHOMA RESISTANCE

The combination of the RLM7 gene and Polygenic resistance provides outstanding, durable resistance to Phoma Stem Canker and flexibility in fungicide application.



GOOD LIGHT LEAF SPOT RESISTANCE

Solid polygenic resistance providing a good level of protection from Light Leaf Spot the 2nd most important OSR disease.



POD SHATTER RESISTANCE

Genetic resistance that minimises yield loss and volunteer issues caused by seed-shedding up to and during harvest.



HIGH OIL

Consistent high oil content adding value to the harvested crop through higher oil bonus payments.

BREEDER'S VIEW

“DK EXALTE is one of the UK's most widely grown hybrids. Its high yield is protected by pod shatter resistance and it is notable for its high levels of Phoma and Light Leaf Spot resistance as well as its rapid autumn development”



MATTHEW CLARKE

RECOMMENDATIONS

Seed rate should target an even plant stand of 25-30 plants/m² in spring.

The rapid autumn growth habit means a PGR may be appropriate in early/mid October on crops early sown or on fertile sites to reduce the risk of over development pre winter.

The early and rapid spring growth habit means PGRs should be considered on forward crops and fertile sites or those with a history of lodging along with appropriate nitrogen rates to avoid oversize canopies. Ensure the Green Area Index is accurately determined at the start of spring growth.

Contact our National Account Managers:
tom.chillcott@bayer.com, 07976 397300,
lizzie.matthews@bayer.com, 07918 622318
or our Technical Development and Agronomy representative:
william.vaughan-france@bayer.com, 07768 507866

or learn more at dekalb.co.uk

DEKALB is a trademark of the Bayer Group.