

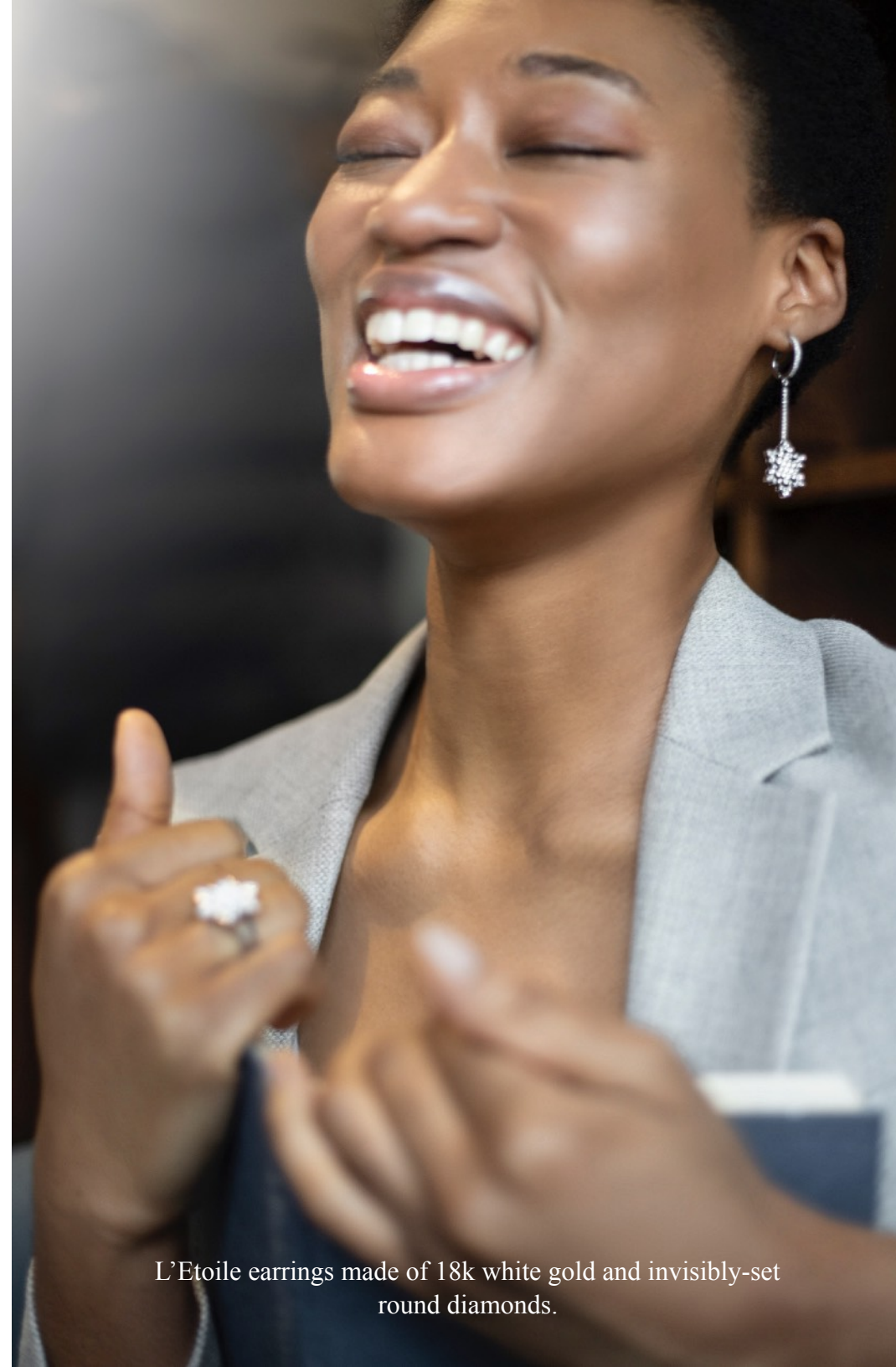


GERALDO

L'Etoile



Collection L'Etoile strikes a balance between refined femininity and industrial modernity.



L'Etoile earrings made of 18k white gold and invisibly-set round diamonds.

## INVISIBLE SETTING

Invisible setting is mastered to perfection by our artisans. This is a method of setting gems, in which a mosaic-like array of stones seems to float seamlessly in a piece with no visible prongs or support.

Magnificent invisible setting dazzles the eye and hypnotizes. Nonpareil mastery of the invisible setting technique reveals the tastemaker's superior attention to detail, creating jewellery that outshines the competition.



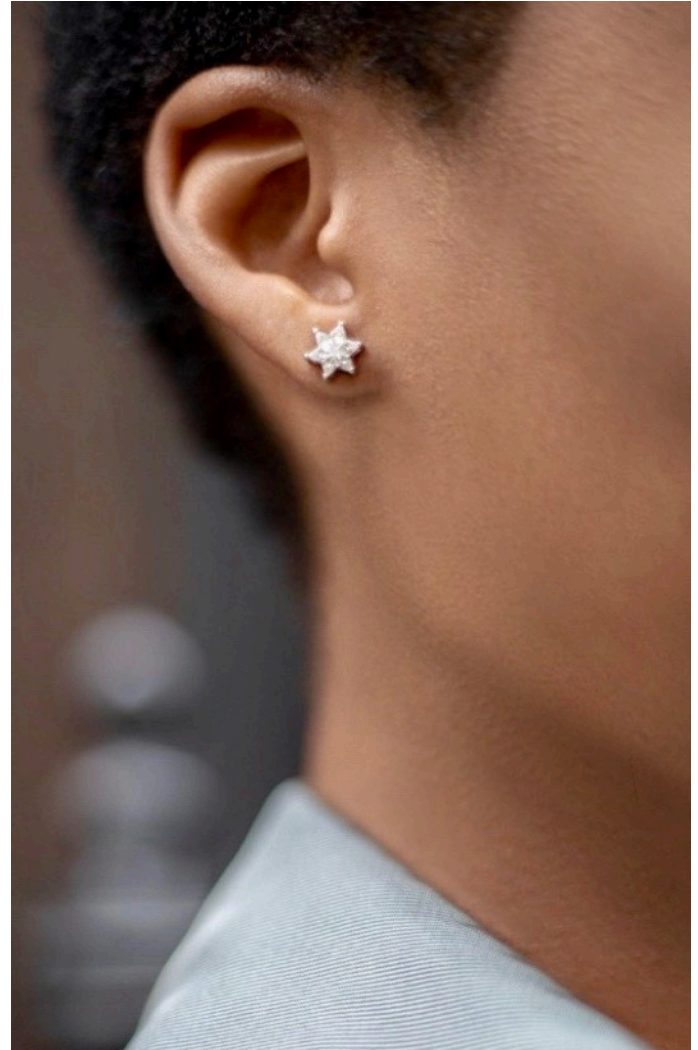
L'Etoile pendant made of 18k white gold and invisibly-set round diamonds.



Artful and delicate, jewels from L'Etoile collection are adorned with invisibly-set brilliant round diamonds.



L'Etoile & Marquise rings made of 18k white gold and invisibly-set round diamonds.



Star of David studs made of 18k white gold and invisibly-set round diamonds.