

Piezo Switch for Explosive Environments



PSE EX 16



PSE EX 16 red anodized

**Description**

- Piezo switch certified according to ATEX category II 2 G Ex ib IIB T4
- Assembly by mounting with nut
- Pins, Crimp Terminal male, AMP

Approvals

- EMC directive 2004/108/EWG EMC directive 2004/108/EWG
- ATEX Approval Test Report: TÜV 08 ATEX 554671X
- ATEX Approval Marking: II 2 G Ex ib IIB T4
- MIL-STD Certificate Number: 202F Method 107G, 202F Method 204D, 202F Method 213B, 416D Method RS103, 810E Method 501.3, 810E Method 502.3, 810E Method 507.3
- VDE Certificate Number: DIN EN 61000-4-2, DIN EN 61000-4-4

Characteristics

- Housing material types: aluminum, brass chrome-plated or stainless steel
- High reliability, long lifetime with more than 20 mill. actuations
- Easy to clean due to a tightly closed surface (IP 69K)
- for use in harsh environments, especially applications and environments where volatile fumes and gases are present

Weblinks

[html-datasheet](#), [General Product Information](#), [Approvals](#), [RoHS](#), [CHINA-RoHS](#), [e-Shop](#), [CAD-Drawings](#), [Product News](#), [Detailed request for product](#)

Technical Data**Electrical Data**

Switching Function	N.O.
Switching Voltage	max. 24 / 24 VAC/DC
Switching Current	max. 40 mA
Rated Breaking Capacity	0.96 W
Lifetime	20 mill. at Rated Braking Capacity
Switch Resistance OFF	> 10 kΩ
Switch Resistance ON	< 20 mΩ
Capacity	5 pF
N.O. Closing Impulse Duration	20- 1000 ms
Contact Configuration	free polarity

Mechanical Data

Actuating Force	≤ 3 N
Actuating Travel	0.002 mm
Shock Protection	IK 02
Starting Torque	2.5 Nm

Climatical Data

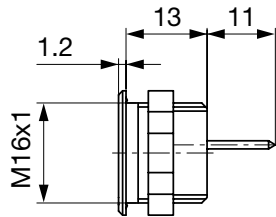
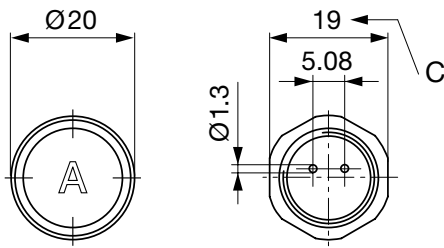
Operating Temperature	-20 to +60 °C
Storage Temperature	-20 to +60 °C
IP-Protection	IP 67 , IP 69K , Front Side / Rear Side DIN EN 60069-2-30 Db (Moist heat - air test with 55°C / 93% humidity)
Salt Spray Test (acc. to DIN 50021-SS)	24 h / 48 h / 96 h Residence Time

Material

Housing (depending on type)	Stainless Steel, Aluminium anodized, Polyamide, Chromed Brass
-----------------------------	---

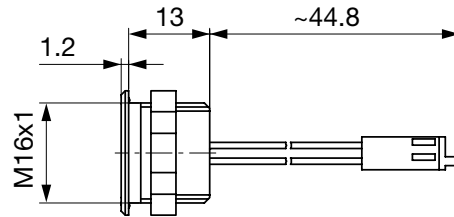
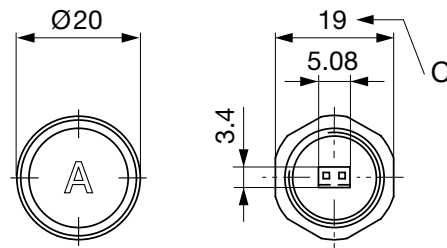
Dimensions

PSE M16 with Pins



Version available on request

PSE M16 with AMP



Version available on request

Legend:

B = Actuating Area

C = Width Across Flats

I = Crimp Terminal

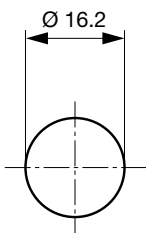
Lettering:

- either with/without lettering

- position of the connections with respect to the position of the lettering is not defined

Panel cut outs

PSE M16



Lettering

The last three digits in the order number define the lettering:

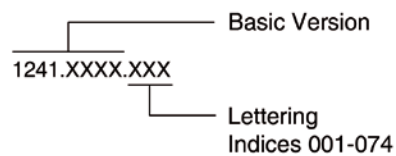
001-074

Standard Lettering

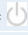
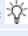
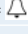
101-

Customized Lettering

Ordering Example for Lettering



Order Index Lettering

001 = A	021 = U	041 = ÷	061 = EIN
002 = B	022 = V	042 =	062 = AUS
003 = C	023 = W	043 = =	063 = AUF
004 = D	024 = X	044 = #	064 = AB
005 = E	025 = Y	045 =	065 = ON
006 = F	026 = Z	046 =	066 = OFF
007 = G	027 = 0	047 = →	067 = UP
008 = H	028 = 1	048 = ←	068 = DOWN
009 = I	029 = 2	049 =	069 = HIGH
010 = J	030 = 3	050 =	070 = LOW
011 = K	031 = 4	051 = %	071 = ON/OFF
012 = L	032 = 5	052 = √	072 = START
013 = M	033 = 6	053 = CTRL	073 = RESET
014 = N	034 = 7	054 = RETURN	074 = 
015 = O	035 = 8	055 = SHIFT	075 = 
016 = P	036 = 9	056 = LOCK	076 = 
017 = Q	037 = +	057 = STOP	
018 = R	038 = -	058 = ENTER	
019 = S	039 = .	059 = BACK	
020 = T	040 = x	060 = LINE	

Lettering Colour of Laser Lettering

Material	Lettering Colour	
Stainless Steel	black	Filled letters
Aluminum natural anodized	light grey	Filled letters (only after customer approval)
Aluminum coloured anodized	light grey	Filled letters

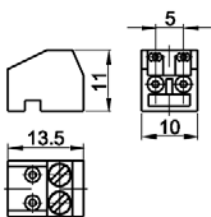
Variants

Mounting Diameter [mm]	Terminal	Housing Material	Colour of Housing	Type	Order Number
16	Pins	Aluminum	gold	PSE 16 EX	1241.2415.1
16	Pins	Aluminum	red	PSE 16 EX	1241.2415.3
16	Pins	Aluminum	green	PSE 16 EX	1241.2415.5
16	Pins	Aluminum	Alu natural	PSE 16 EX	1241.2415.8

The listed item numbers represent a selection from the range of piezo switches. Other mounting diameters, materials and colors are available on request.

Accessories

Description



Connecting Terminal PSE EX
Connecting Terminal for Pin Versions of PSE EX

PSE EX

0701.9225