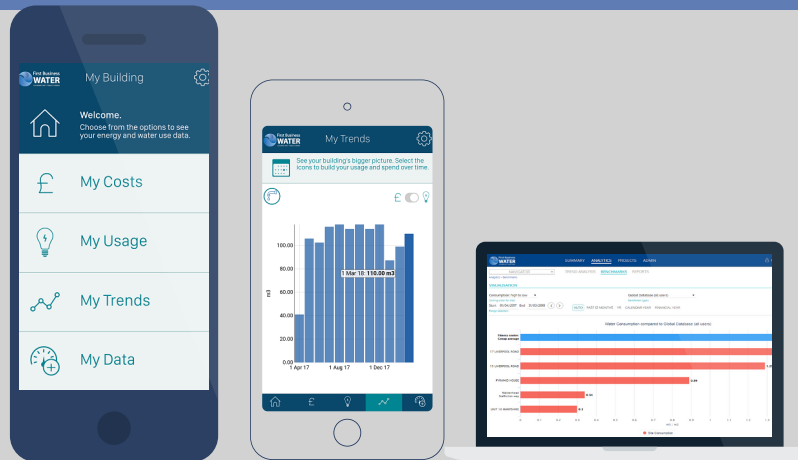


Access your water consumption  
anytime everywhere - **automatic  
performance benchmarking**



# WaterDeck

MEASURE | COMPARE | SAVE



The first innovative  
web-based platform that  
helps you to understand,  
manage and monitor your  
actual water consumption

**WaterDeck** is an innovative online platform that gathers water consumption data from all your business premises, sync with the Cloud, so they are accessible from anywhere. Together with a user-friendly interface, available on both desktop and mobile application. With intelligent analytic functions, helping you to understand your consumption as well as automatically benchmark water efficiency performance against your sites or among peer industry benchmarks.

Co-developed by *First Business Water and Fabriq*

#### NEW LEVEL OF SAVINGS

Helps organisations save water, energy, environment, costs, and time with WaterDeck.

#### ACCESS WATER DATA ANYTIME EVERYWHERE

Manage and monitor your actual water consumption, costs, and historical data over time from mobile and desktop application.

#### EASILY CONNECT WITH AMR AND SMART METER

Make the most of real-time data. Also has a built-in function to attach an image of a water meter while uploading the meter reading.

#### AUTOMATIC PERFORMANCE BENCHMARKING

Simply shows results of the relative water efficiency performance. Along with in-depth analysis, benchmark your consumption against the best and typical practice.

#### COMPARE INTERNAL WATER EFFICIENCY PERFORMANCE

Greatest advantage for multi-site business with the internal benchmarking, compare and compete the effectiveness of your water efficiency campaign across your sites to encourage employees to be more efficient.

#### SIMPLY IDENTIFY LEAKAGES

WaterDeck keeps a record and tracks your water consumption over time, helping you to notice when the consumption changes, with built-in alerts highlighting when consumption is above a tolerance.

#### USER-FRIENDLY AND FREE OF CHARGE

Privilege service for First Business Water customers only - available on both desktop and mobile app version.



Pinn House, 2 High Street,  
Pinner Middlesex HA5 5PW

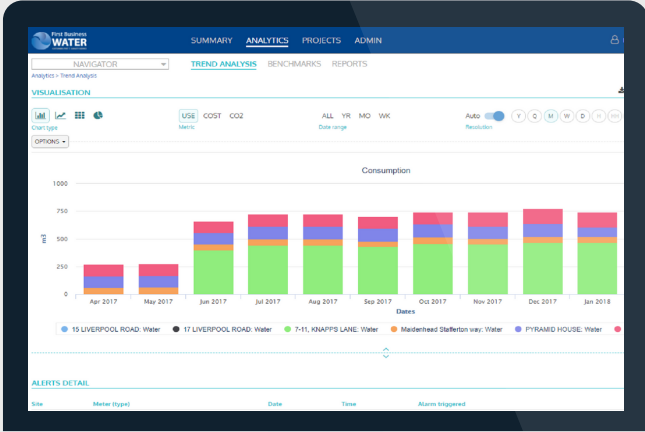


0800-849-1342

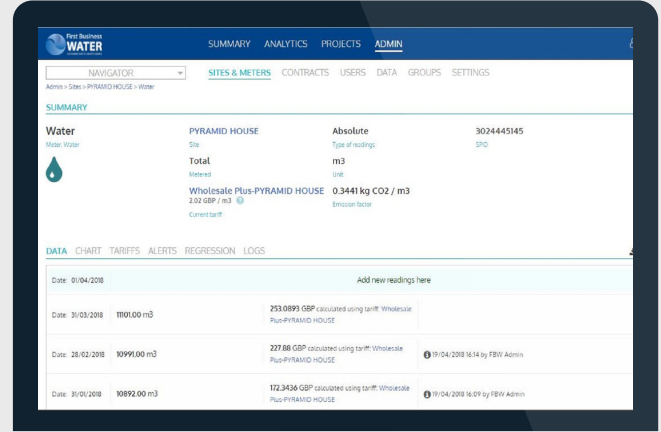


contactus@firstbusinesswater.co.uk  
www.firstbusinesswater.co.uk

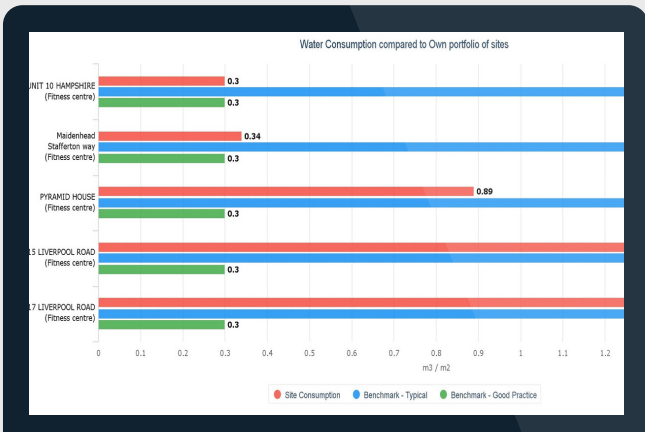
*"WaterDeck helps us easily understand how much water is used across our sites to target our efficiency programme"*



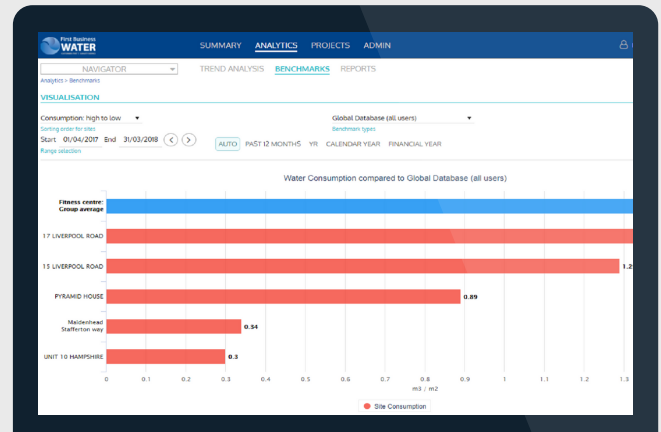
**VIEW CONSUMPTION FOR ALL SITES AT A GLANCE**  
Track water usage in real time (d/w/m/y/all). Automated AMR connection. Alerts when consumption above tolerance.



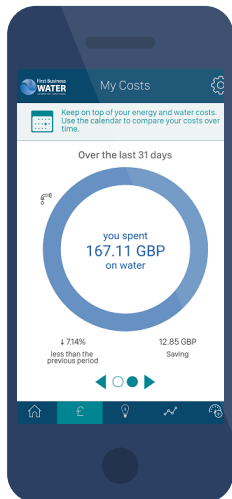
**COST TRACKING**  
Monitor water costs over time and compare with previous periods.



**BENCHMARKING**  
Sites benchmarked and ranked against other sites in portfolio by metric (i.e. m3 / per m2 of area).



**FBW BENCHMARKING**  
Benchmark beyond your portfolio, compare your consumption against the best and typical practices of peer FBW customers.



**MOBILE ACCESS FROM ANY WEB-CONNECTED DEVICE**  
*"Nothing could be simpler than this! we can quickly see key information like costs, performance, and usage data."*

**SUBMIT METER READING VIA THE MOBILE APP**  
*"No more hassle to submit meter readings! Unbelievable, just open the camera, snap it, and Done!"*

