

---

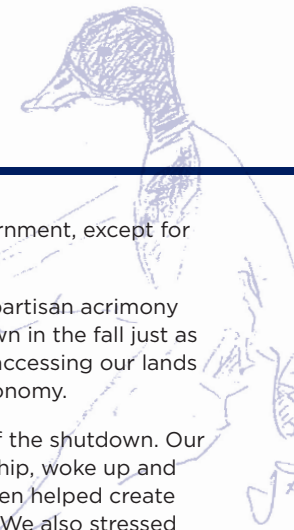
# 2013

ANNUAL REPORT

---

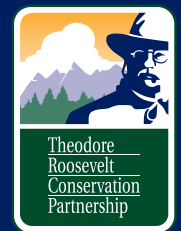
THEODORE ROOSEVELT  
CONSERVATION PARTNERSHIP





**"GREAT THOUGHTS SPEAK ONLY TO THE THOUGHTFUL MIND, BUT GREAT ACTIONS SPEAK TO ALL MANKIND."**

**THEODORE ROOSEVELT**



PHOTOS COURTESY OF PG. 3: DUSAN SMETANA, DAVID D. PERKINS; PG. 4: U.S. LIBRARY OF CONGRESS; PG. 5: DUSAN SMETANA; PG. 6: DUSAN SMETANA; PG. 8: ERIC PETLOCK; PG. 9: U.S. LIBRARY OF CONGRESS, MIA SHEPPARD; PG. 11: DUSAN SMETANA; PG. 12: JOE RIIS; PG. 13: ROCKY MOUNTAIN WILD AND THE CENTER FOR NATIVE ECOSYSTEMS; PG. 14: DUSAN SMETANA; PG. 15: LOUISIANA COASTAL PROTECTION AND RESTORATION AUTHORITY, CCA LOUISIANA; PG. 16-17: TRCP, MAC STONE.

## A LEGACY OF ACTION



**WHIT FOSBURGH  
PRESIDENT & CEO**

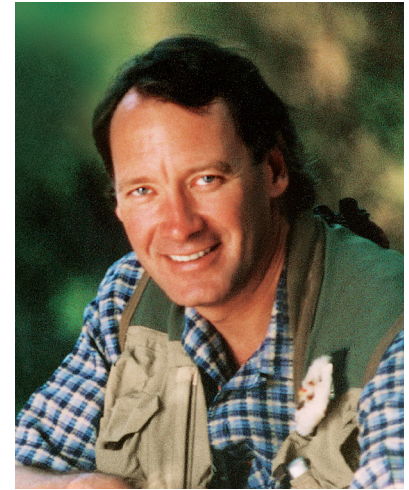
**W**inston Churchill famously said, "Democracy is the worst form of government, except for all those other forms that have been tried."

Even this tepid endorsement was challenged in 2013. Divided government, partisan acrimony and congressional gridlock all reigned, culminating in a government shutdown in the fall just as hunting seasons across the country commenced, blocking Americans from accessing our lands and waters and significantly impacting the nation's outdoors-dependent economy.

Hunters and anglers and public lands and waters quickly became the face of the shutdown. Our community, displeased with being a sacrificial lamb on the altar of partisanship, woke up and spoke up. We reminded politicians and the media that sportsmen and -women helped create the public lands network and restore degraded habitats and at-risk species. We also stressed that hunters and anglers pay for professional management of the nation's fish and wildlife every time we buy equipment and licenses.

Moreover, outdoor recreation, including hunting and fishing, is responsible for \$646 billion in direct expenditures for the U.S. economy every year. When politicians ignore conservation and recreation, they don't just impact people's "fun time"; they impact one of the largest sectors of the U.S. economy - as well as a major part of our country's unique national identity.

By making the case for conservation and recreation, in Washington and almost every congressional district, sportsmen told their elected leaders that they expected action - and the elected leaders responded. Following the end of the government shutdown, a long overdue budget deal was brokered on Capitol Hill. This in turn led to new investment in conservation spending and America's outdoor economy.



**DAVID D. PERKINS  
BOARD CHAIRMAN**

Capitalizing on the new momentum for Congress to do its job, a new five-year Farm Bill became law early in 2014, continuing the bill's investment in private lands conservation and ensuring that federal taxpayers will not incentivize poor stewardship by the nation's agricultural producers. The new Farm Bill also expands public access to private lands, a major step to ensure that all Americans are able to find quality places to hunt and fish.

The Theodore Roosevelt Conservation Partnership was a leader in each of these actions and many others, but ultimately it was our organizational partners and individual hunters and anglers who won the day. They raised their voices and linked arms with others in the community and outside it to reassert the importance of conservation in America and the vital role played by sportsmen.

Democracy works best when people are actively engaged. Complacency allows others to ignore us in favor of their own agendas. Jim Range understood this in 2002 when he created the Theodore Roosevelt Conservation Partnership, and we like to think that Jim would be proud today to see how his organization, and sportsmen across the board, stepped up in 2013.

To our board of directors, funders and partners who provide the collective voice for the TRCP, thank you for your support in the past and moving forward. And to the millions of American sportsmen who speak up in support of responsible natural resources management and conservation: our thanks go to you, as well.

Theodore Roosevelt said, "Great thoughts speak only to the thoughtful mind, but great actions speak to all mankind." In the spirit of Roosevelt's call to action, we at the TRCP look forward to continuing to uphold America's unequaled outdoors legacy in 2014 and beyond.

# STRONG FUNDING FOR CONSERVATION EQUALS A STRONG OUTDOOR ECONOMY

The year 2013 began with more questions than answers regarding federal funding for important conservation programs. The North American Wetlands Conservation Act, State Fish and Wildlife Grants Program and Land and Water Conservation Fund suffered disproportionate cuts (or were proposed for zero funding) due to continued political wrangling over broader deficit-reduction debates.



The challenge for the TRCP and the rest of our community was to show the direct linkage between federal investment in programs that conserve fish and wildlife habitat and both sportsmen's access and the robust economic stimulus supported by a healthy outdoor economy. Throughout 2013, the TRCP undertook unique actions to keep this issue at the forefront of the deficit debate in Washington, D.C., and successfully educated policy makers about its importance to American sportsmen - and the rest of the country.

By year's end, the difference our efforts made was evident. Congress passed a new, bipartisan budget for both FY 2014 and 2015 that moved away from harsh "sequester" cuts and back toward a normal appropriations process. In January 2014, when the final spending levels for FY 2014 were set, funding for many conservation programs actually increased by 5 percent from the prior year.

**By connecting the dots between investment in federal conservation programs and the economic impact of hunting and fishing, the TRCP was able to translate action into policy change.**



**OUR NATURAL RESOURCES SERVE AS THE "INFRASTRUCTURE" OF A ROBUST OUTDOOR RECREATION ECONOMY TRANSLATING TO \$646 BILLION IN DIRECT CONSUMER SPENDING AND MORE THAN 6 MILLION JOBS.**



### MARCH 2013

With 20 partner organizations, the TRCP initiates letters and series of meetings with lawmakers to support conservation funding and educate them on the importance of the nation's outdoors-dependent economy.



### JUNE 2013

The TRCP convenes CEO-level meetings to discuss strategy and core community priorities for funding issues.



### SEPTEMBER 2013

CEOs from sportsmen organizations and outdoor industry meet with White House officials and congressional leadership to reinforce a connection between conservation and economy.



### OCTOBER 2013

Government shutdown occurs. The TRCP convenes partner groups in communications effort to highlight the detrimental impact of the shutdown on hunting and fishing opportunities - and the economy.



### NOVEMBER/DECEMBER 2013

Leveraging the strength of the America's Voice for Conservation, Recreation and Preservation coalition, the TRCP conducts a targeted grassroots education campaign of key congressional members on the budget process and the importance of funding for conservation programs.



### DECEMBER 2013/JANUARY 2014

Budget processes return to a normal order and budget allocations are set. FY 2014 appropriations for conservation programs reflect 5 percent increase.



## A VICTORY FOR CONSERVATION AND PUBLIC ACCESS

**T**he expiration in 2013 of the 2008 Farm Bill – already extended by Congress multiple times – left sportsmen facing the unwelcome prospect of losing nearly 30 years of private lands conservation gains. Passage of a new bill was contentious and polarizing, and compromise seemed impossible.

The TRCP brought to the table a uniquely nonpartisan voice, one that advanced commonsense solutions that conserve habitat and keep farming economically viable. Following years of educating sportsmen and farmers on the importance of the bill's conservation programs, we were poised for engagement when the time came. That time was 2013.

A highlight of this bipartisan work was our engagement of traditional commodity groups like the National Corn Growers Association and National Farmers Union to broker an agreement re-linking conservation compliance with the federal crop insurance program, thereby encouraging

the conservation of vulnerable lands instead of incentivizing their destruction. Senate Agricultural Committee Chairwoman Debbie Stabenow called our collaborative effort “the biggest advancement in conservation policy in 25 years.”

The TRCP also launched the “Barnyard to Boatyard” Conservation Exchange in 2013. We brought farmers from South Dakota to the Louisiana Delta and recreational fishing guides from the Delta to Dakota farmlands to show each group the similarities of a livelihood dependent on the health of natural resources. This “cultural exchange” attracted broad media coverage of the impacts of Farm Bill conservation programs.

Our hard work paid off. On Feb. 7, 2014, a new Farm Bill was signed into law that includes key sportsmen's priorities, including conservation compliance, funding for public access initiatives and a regional “Sodsaver” program.



## STRENGTHENING THE FARM SAFETY NET: CONSERVATION COMPLIANCE



The USDA has helped producers develop and implement more than 1 million conservation plans covering more than 140 million acres, a significant portion of which were on land that had little or no prior conservation practices.



Since 1985, the USDA Economic Research Service estimates that conservation compliance has prevented the draining of between 1.5 million and 3.3 million acres of vulnerable wetlands.



The Congressional Budget Office estimates that the re-linkage of crop insurance with conservation compliance will save taxpayers about \$55 million over 10 years.

### SPOTLIGHT ON ACCESS

**The new Farm Bill includes \$40 million in mandatory annual funding for the Voluntary Public Access Program, also known as Open Fields, which incentivizes private landowners' opening their properties to hunting, fishing and other outdoor recreation.**



**"I HEARTILY ENJOY THIS LIFE, WITH ITS PERFECT FREEDOM, FOR I AM VERY FOND OF HUNTING, AND THERE ARE FEW SENSATIONS I PREFER TO THAT OF GALLOPING OVER THESE ROLLING LIMITLESS PRAIRIES, WITH RIFLE IN HAND..."**

**THEODORE ROOSEVELT**



# CONSERVING THE BEST PUBLIC LANDS IN THE WEST

**H**unting and fishing in the western United States depend in large part on public lands overseen by the Bureau of Land Management – and in particular, tracts of intact and undeveloped “backcountry” that encompass high-quality habitat and sporting opportunities, which are available to anyone.

Increasing demand for energy development in the backcountry, however, as well as degraded habitats, invasive species, poorly managed motorized travel and political infighting, present new management challenges for the BLM. Never before has the conservation of these lands been of greater importance.

Led by the TRCP and our partners, hunters and anglers are offering a solution – one that can return balanced management and active restoration to millions of acres of our most valuable public lands and waters.

In 2013, the TRCP collaborated with a coalition of Western sportsmen to persuade the BLM to adopt a new administrative tool for backcountry management called “backcountry conservation areas.” This approach is being proposed by sportsmen through public planning processes in Colorado, Idaho, Montana, Nevada and Oregon. In places where backcountry conservation areas are adopted, the BLM would conserve and restore undeveloped prairies, badlands, canyons and mountains with priority habitats and world-class hunting and fishing.

Sportsmen believe that, when adopted through local land use plans, backcountry conservation areas can serve as a model management approach for BLM lands of recreational, social and economic importance.



*Scan this code to see an example of our backcountry conservation efforts underway in Oregon.*

# WATER WOES: THE SPORTSMEN'S SOLUTION

**C**an you name the greatest long-term threat to fish and wildlife habitat?

Water scarcity.

Diminished access to quality freshwater resources is having catastrophic consequences nationwide. While drought grips the West, polluted runoff degrades fisheries in the East. Our changing climate, growing population and unsustainable development exacerbate the situation, creating demands for clean water that cannot be met with current supplies. Even worse, current laws and policies fail to allocate enough water for fish and wildlife.

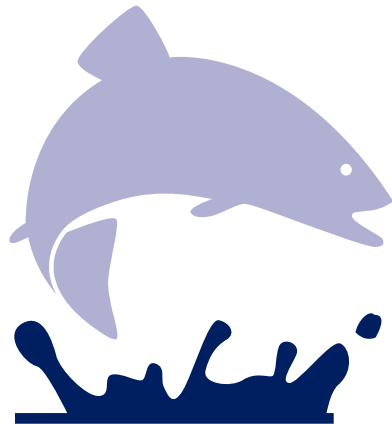
The need for smart water management is urgent.

In 2013, the TRCP injected sportsmen's voices into the discussion. We formed the Center for Water Resources, an unprecedented advocacy effort for sportsmen's water priorities. We catalyzed partners and interest groups to develop strategies for conserving water resources to benefit fish, wildlife and sportsmen.

These strategies include increasing funding for water conservation, engaging sportsmen in federal water policy making, ensuring that conservation is prioritized during decision making, and promoting collaborative, comprehensive water resource planning.

Our goal is to represent sportsmen's values in federal water policy making. As testimony to our success, decision makers have begun to actively seek sportsmen's participation in developing commonsense water solutions. The coming year should bring restoration of Clean Water Act protections for wetlands and headwater streams - an outcome that simply could not happen without sportsmen's support.

Innumerable challenges remain, and new challenges will arise. Now, sportsmen are united to meet these challenges and respond with effective federal water management solutions.



## SPOTLIGHT ON ACCESS

**Headwater streams and wetlands are indispensable parts of our sporting traditions, yet America loses an average of 13,800 acres of wetlands each year to draining and development.**

**“TROUT UNLIMITED REALLY BENEFITS FROM THE TRCP’S EFFORTS TO SECURE FUNDING FOR PROGRAMS THAT GET DOLLARS TO OUR ON-THE-GROUND RESTORATION PROJECTS. OUR COLLABORATION ON MONTANA’S SUN RIVER – USING A PUBLIC-PRIVATE FUNDING MECHANISM TO IMPROVE IRRIGATION INFRASTRUCTURE – IS A GREAT EXAMPLE OF OUR ORGANIZATIONS WORKING TOGETHER TO RESTORE FLOWS TO A ROCKY MOUNTAIN WILD TROUT RIVER.”**

**LAURA ZIEMER, SENIOR COUNSEL & WATER POLICY ADVISOR, TROUT UNLIMITED**



# BETTER PLANNING FOR OUR ENERGY FUTURE

**"WE ARE PRONE TO SPEAK OF THE RESOURCES OF THIS COUNTRY AS INEXHAUSTIBLE; THIS IS NOT SO."**

**THEODORE ROOSEVELT**

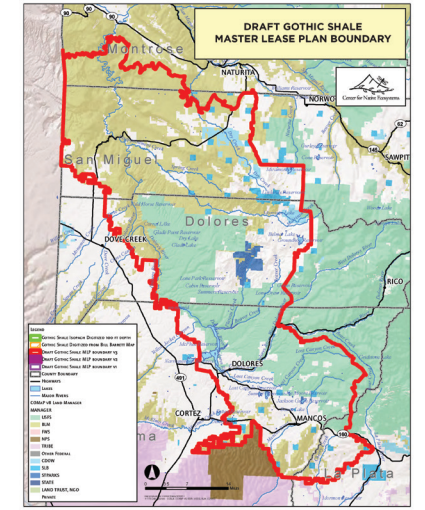


**R**oosevelt's words never have resonated more powerfully. They serve as a call to action for the TRCP and others who believe that energy development must coexist with the conservation of fish and wildlife and their habitats - and maintain opportunities for citizens to access and enjoy public lands and waters.

The TRCP's efforts focus on advancing federal policies in two main areas: (1) implementation of better planning before development begins and (2) improving mitigation practices on landscapes and ecosystems where development is occurring. In 2013, through a coordinated campaign of advocacy, grassroots engagement and media outreach, we made progress toward achieving these key reforms.

Master Lease Planning, a process that facilitates better pre-development planning and analysis, was included in 17 Bureau of Land Management resource management plans in 2013. Use of these MLPs will help responsibly direct the development of millions of acres of public lands.

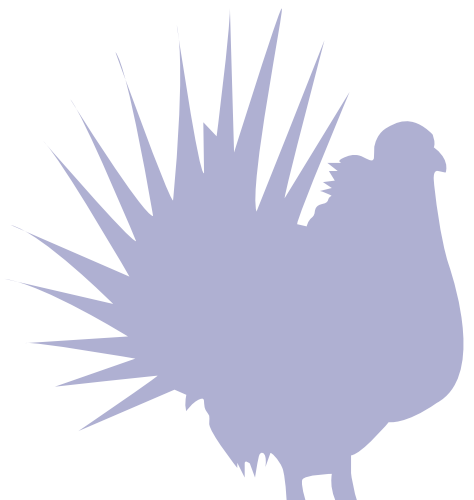
On Aug. 13, 2013, Interior Secretary Sally Jewell issued a secretarial order revamping and improving mitigation policies department-wide, emphasizing diminishing the negative impacts of energy development on a "landscape scale." Significantly, policies now are being developed that will link this new approach to front-end planning efforts before development occurs.

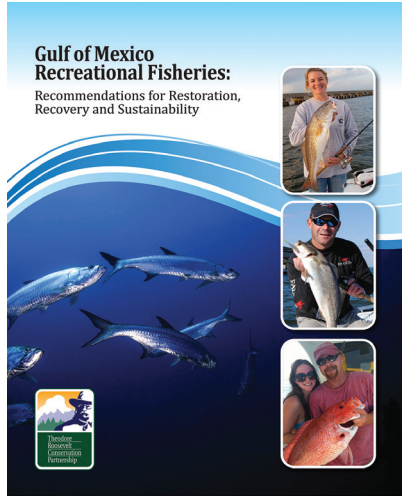


*An example of an MLP boundary depicted as part of a land management plan in Colorado. MLPs determine what areas should be avoided, where development is best suited, and how mitigation needs should be addressed well in advance of leasing the area for development.*

## SPOTLIGHT ON ACCESS

**Working with our partners, the TRCP is identifying key opportunities for sportsmen's engagement in developing new MLPs, providing input on high-value fish and wildlife habitats, and ensuring values such as public access and recreational opportunities are considered at every stage in the planning process.**





**Gulf of Mexico Recreational Fisheries: Recommendations for Restoration, Recovery and Sustainability**

The TRCP report recommends extensive investment of oil spill recovery dollars in the restoration of barrier islands and headlands across the Gulf Coast along with other habitat restoration and fisheries management efforts.



Scan this code to see the full TRCP report on Gulf of Mexico recreational fisheries.

# RESTORING FISHERIES, HABITAT AND ANGLER CONFIDENCE IN THE GULF OF MEXICO

**R**ecreational anglers in the Gulf of Mexico spend more than 42.5 million days on the water every year.

If you fish the salt – or if you care about the \$8 billion-plus generated annually by recreational angling in the Gulf – then you have a stake in the management of its ocean and coastal resources, which are threatened by factors ranging from energy development and habitat loss to commercial and recreational fishing pressure.

The TRCP worked throughout 2013 to guarantee that recreational saltwater anglers’ priorities regarding habitat restoration, fisheries science and fisheries management are addressed in the rehabilitation of the Gulf following the 2010 oil spill. State and federal agencies responsible for determining what projects will best help the Gulf are seeking input from a variety of stakeholders in the region. The TRCP is engaging with anglers to ensure our values are represented.

The TRCP’s Gulf Recreational Fishing Restoration Workshops were conducted in Florida, Alabama, Mississippi, Louisiana and Texas in May 2013. They attracted recreational anglers, charter captains, researchers, fisheries managers, biologists and retailers who identified projects and programs to improve fisheries monitoring, data collection, research and management – and sustain Gulf recreational fisheries and fishing.

Their recommendations resulted in a report, “Gulf of Mexico Recreational Fisheries: Recommendations for Restoration, Recovery and Sustainability,” released in October.

Using our report as a foundation, the TRCP is continuing to work with federal and state entities to make the best use of Gulf restoration funds.



Since the release of the report, the National Fish and Wildlife Foundation has granted nearly \$150 million to restore the Caminada Headland, a critical beach and barrier headland in Louisiana. Ultimately, the project will restore more than 12 miles of beaches, dunes and marshes that provide critical bird and fish habitats.







# OUR DONORS

## PRESIDENT'S COUNCIL \$10,000+

F. WELDON BAIRD  
 JAMES A. BAKER IV  
 JO ANN BAREFOOT  
 TERRY BETTERIDGE  
 KEITH CAMPBELL  
 JOHN DOERR  
 JOHN Q. GRIFFIN  
 FRANK HUGELMEYER  
 NELSON ISHIYAMA  
 PATSY ISHIYAMA  
 TONY & AMIE JAMES  
 CARL KNOBLOCH  
 JOHN L. MORRIS  
 CLARKE OHRSTROM  
 DAVID D. PERKINS &  
 NANCY MACKINNON  
 RANDY REPASS  
 CLAUDIA SCHERER  
 STEVE SHARKEY  
 LIZ STORER  
 TED TURNER  
 PAUL R. VAHLDIEK, JR.  
 HENRY & HOLLY WENDT

## BULL MOOSE CIRCLE \$1,000-\$9,999

NANCY ANISFIELD  
 AGATHA BARCLAY  
 PHILIP & SHELLEY BELLING  
 MAGALEN O. BRYANT  
 THOMAS BUFFENBARGER  
 DEAN L. & ROSEMARIE BUNTROCK  
 SAM A. CAMPBELL IV  
 CHARLES H. COLLINS  
 JOCK CONYNGHAM  
 GEORGE COOPER  
 JOSEPH H. DAVENPORT III

LEE-ANNE DISTLER  
 SCOTT & KATIE D. ECKMAN  
 SID EVANS  
 MICHAEL FITZGERALD, JR.  
 DAVID B. FORD  
 MICHAEL K. GEWIRZ  
 STEVEN & KATRINA GEWIRZ  
 ALAN GNANN  
 JAMES GREENE  
 JENNIFER GROSSMAN  
 PAUL E. HAGEN  
 JEFFREY & TRISHA HARSH  
 WILLIAM HITE  
 WILL JOHNSTON  
 PETER R. & CYNTHIA K. KELLOGG  
 KEITH KENNEDY  
 ROBERT & LESLIE KETNER  
 JERRY & VIESIA KIRK  
 GEORGE & SUSAN KLEIN  
 H. HOD KOSMAN  
 ROBERT MARICICH  
 FORREST E. MARS, JR.  
 JIM MARTIN  
 JAMES D. MAYOL  
 DON MCGRATH  
 CHARLES MONROE  
 JOEL MURPHY  
 MICHAEL NUSSMAN  
 KIRKWOOD & CAROL LEE OTEY  
 CONNIE PARKER  
 EDGAR N. JANNOTTA & ERIKA PEARSALL  
 MICHAEL & PATRICIA PETERS  
 GEORGE & NANCY RECORDS  
 JOHN REDPATH  
 RON REGAN  
 DAVID ALBERSWERTH & CARY RIDDER  
 KINSEY & MONA ROBINSON  
 PAUL A. & CAROL ROSE  
 MILLS SCHENCK  
 MIKE SCHULER  
 ELIZABETH SEARLE  
 MR. & MRS. JOHN M. SEIDL  
 DR. & MRS. ROLLIN SPAROWE  
 LUCAS ST. CLAIR  
 DREW ST. JOHN II  
 TED & NOA STARYK

RICHARD R. STEBBINS, JR.  
 ROBERT STUART  
 HARRY L. THOMAS  
 RICHARD TRUMKA  
 PAUL VIGANO  
 HOWARD VINCENT  
 CHRIS VON STRASSER  
 K.C. WALSH  
 CHARLES & APRIL WALTON  
 ERIC WASHBURN  
 PHILIP WATT  
 ALAN & JAN WENTZ  
 JAMES & ANNE WHITE  
 TED WILLIAMS  
 DOUG WOLFORD  
 MR. & MRS. C. MARTIN WOOD III

## ROUGH RIDERS \$500-999

SCOTT BLACKWELL  
 CARL & CAROLE BRADY  
 TOBIAS BUCK  
 ALAN CHAN  
 LARRY COATS  
 HARMON B. DAVIS II  
 WILLIAM DUNN  
 THOMAS HELM  
 ANNI INCE-MCKILLOP  
 E. RANDOLPH LABBE  
 WELDON & KATHY SCHENCK  
 MATTHEW SCOTT  
 JOHN STEPHENSON  
 MATTHEW THORBURN

## INSTITUTIONAL

AFL-CIO  
 AMERICAN SPORTFISHING ASSOCIATION  
 ASSOCIATION OF FISH & WILDLIFE  
 AGENCIES  
 BAKER BOTTS, LLP  
 BAKER, DONELSON, BEARMAN,  
 CALDWELL & BERKOWITZ, PC  
 BASS PRO SHOPS  
 BIPARTISAN POLICY CENTER  
 BISMARCK-MANDAN CONVENTION &  
 VISITORS BUREAU  
 BLUEWATER STRATEGIES  
 BURNING FOUNDATION  
 CAMPBELL FOUNDATION  
 CINNABAR FOUNDATION  
 COMMUNITY FOUNDATION OF  
 JACKSON HOLE  
 COSTA  
 CURTIS & EDITH MUNSON FOUNDATION  
 DAVID & LUCILE PACKARD FOUNDATION  
 DEAN L. & ROSEMARIE BUNTROCK  
 FOUNDATION  
 DRIVE CURRENT  
 DUCKS UNLIMITED, INC.  
 FAIR PLAY FOUNDATION  
 FLORIDA FISH & WILDLIFE  
 CONSERVATION COMMISSION  
 FLORIDA KEYS & KEY WEST TOURISM  
 COUNCIL  
 FORBES-TATE  
 FRENCH FOUNDATION  
 FRONTIERS INTERNATIONAL TRAVEL  
 FORESTLAND GROUP  
 GEORGE B. STORER FOUNDATION  
 GORDON & BETTY MOORE FOUNDATION  
 GREATER KANSAS CITY COMMUNITY  
 FOUNDATION  
 THE HIGH LONESOME RANCH  
 INTERNATIONAL ASSOCIATION OF  
 MACHINISTS & AEROSPACE WORKERS  
 ISHIYAMA FOUNDATION  
 IZAAK WALTON LEAGUE OF AMERICA  
 JAMES N. & JANE B. LEVITT FAMILY  
 FOUNDATION  
 KNOBLOCH FAMILY FOUNDATION  
 MARISLA FOUNDATION  
 MINOX USA, INC.  
 MONROE SCHULER FOUNDATION  
 NATIONAL FISH & WILDLIFE FOUNDATION  
 NATIONAL MARINE MANUFACTURERS  
 ASSOCIATION

NATIONAL WILDLIFE FEDERATION  
 THE NATURE CONSERVANCY  
 NEVADA BIGHORNS UNLIMITED  
 NEW SOUTH ACCESS & ENVIRONMENTAL  
 SOLUTIONS  
 NEW VENTURE FUND  
 NORCROSS WILDLIFE FOUNDATION, INC.  
 NORTH DAKOTA TOURISM  
 OHRSTROM FOUNDATION  
 ORANGE COUNTY COMMUNITY  
 FOUNDATION  
 ORVIS COMPANY, INC.  
 ORVIS-PERKINS FOUNDATION  
 OSHKOSH AREA COMMUNITY  
 FOUNDATION  
 OUTDOOR INDUSTRY ASSOCIATION  
 PATAGONIA, INC.  
 PETER R. & CYNTHIA K. KELLOGG  
 FOUNDATION  
 PEW CHARITABLE TRUSTS  
 PLUM CREEK  
 POTLATCH CORPORATION, INC.  
 PRO GUIDE DIRECT  
 PURE FISHING  
 RECORDS-JOHNSTON FAMILY  
 FOUNDATION, INC.  
 RECREATIONAL BOATING & FISHING  
 FOUNDATION  
 REMINGTON ARMS COMPANY  
 REPASS-RODGERS FAMILY FOUNDATION  
 SITKA GEAR  
 SPORTSMAN CHANNEL, INC.  
 SOUTHERN COMPANY SERVICES, INC.  
 TARA FOUNDATION  
 TROUT UNLIMITED  
 TURNER FOUNDATION  
 UNITED ASSOCIATION  
 UNITED UNION OF ROOFERS,  
 WATERPROOFERS & ALLIED WORKERS  
 VISIT FLORIDA  
 WALTON FAMILY FOUNDATION  
 WENDT FAMILY CHARITABLE  
 FOUNDATION  
 WESTERN CONSERVATION FOUNDATION  
 WILBURFORCE FOUNDATION  
 WILLIAM & FLORA HEWLETT  
 FOUNDATION  
 WYSS FOUNDATION

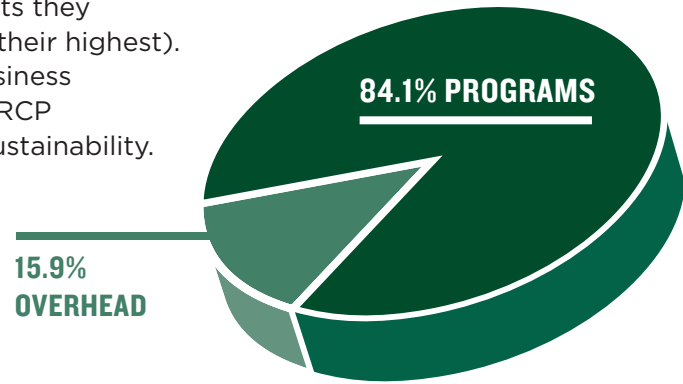
## IN KIND

AMERICAN SPORTFISHING ASSOCIATION  
 F. WELDON BAIRD  
 BASS PRO SHOPS  
 BEAM GLOBAL  
 CARL BRADY  
 CHESAPEAKE BAY FLY FISHING  
 CHESAPEAKE BAY ROASTING COMPANY  
 COSTA  
 DUCKS UNLIMITED, INC.  
 FINE DINING RESTAURANTS  
 TOM FRANKLIN  
 FRONTIERS INTERNATIONAL TRAVEL  
 JOHN Q. GRIFFIN  
 THE HIGH LONESOME RANCH  
 HOTEL TERRA  
 J.R. CIGARS  
 TIM KIZER  
 DAVE KUMLIEN  
 L. L. BEAN  
 LITTLE CREEK OUTFITTERS  
 MAC STONE PHOTOGRAPHY  
 RAMON MATHEU  
 MEATEATER  
 CHUCK MIDDLETON  
 MINOX USA, INC.  
 MULE DEER FOUNDATION  
 NATIONAL WILD TURKEY FEDERATION  
 NEW BELGIUM BREWERY  
 LIZ OGILVIE  
 ONE MORE CAST CHARTERS  
 ORVIS COMPANY, INC.  
 PATAGONIA, INC.  
 PHEASANTS FOREVER  
 MARC PIERCE  
 PRINCE GEORGE'S TRAP & SKEET CENTER  
 PRO GUIDE DIRECT  
 PURE FISHING  
 STEVEN RINELLA  
 SIMMS  
 SLOOP BETTY  
 SMATHERS & BRANSON  
 DUSAN SMETANA  
 DAVID SUTHERLAND  
 TONY BYNUM PHOTOGRAPHY  
 URBAN ANGLER  
 WILD SHEEP FOUNDATION  
 RUSS WILKINSON  
 WILSON RANCH RETREAT  
 WINGWORKS  
 WORLDCAST ANGLERS  
 WYOMING GAME & FISH COMMISSION  
 ZERO POINT ZERO PRODUCTION

# FINANCIALS

The Theodore Roosevelt Conservation Partnership takes great pride in our financial efficiency, our accountability to donors and our transparency. We work to use every dollar contributed as resourcefully as possible and carefully monitor our administrative and fundraising spending.

The TRCP has received a four-star rating from Charity Navigator (their highest rating that only 6 percent of the nonprofits they review receive) and a Gold Seal rating from Guidestar (their highest). We also received the highest rating from the Better Business Bureau Wise Giving Alliance, further proving that the TRCP outperforms most other nonprofits when it comes to sustainability.



## STATEMENT OF FINANCIAL POSITION

ASSETS	12/31/2013
Cash and Cash Equivalents	1,470,456
Grants Receivable - Net of Long Term Portion	991,305
Accounts Receivable	69,228
Prepaid Expenses	43,843
Fixed Assets - Net	40,811
Grants Receivable - Long Term Portion	221,370
<b>Total Assets</b>	<b>2,837,013</b>
LIABILITIES	
Accounts Payable/Accrued Expenses	277,939
Accrued Salaries and Vacation	110,445
<b>Total Current Liabilities</b>	<b>388,384</b>
NET ASSETS	
Temporarily Restricted	1,982,761
Board Designated	384,766
Unrestricted	81,102
<b>Total Net Assets</b>	<b>2,448,629</b>
<b>TOTAL LIABILITIES &amp; NET ASSETS</b>	<b>2,837,013</b>

## STATEMENT OF ACTIVITIES

PUBLIC SUPPORT & REVENUE	Unrestricted	Temp. Restricted	Total
Foundation Grants	143,999	3,164,840	3,308,839
Donations	113,864	117,050	230,914
Contributions	273,095	-	273,095
Other Revenue	71,544	64,454	135,998
Net Assets Released from Restriction	3,142,733	(3,142,733)	-
<b>Total Public Support &amp; Revenue</b>	<b>3,745,235</b>	<b>203,611</b>	<b>3,948,846</b>
EXPENSES			
Program Services	3,214,400	-	3,214,400
Supporting Services			
Management & General	476,606		476,606
Fundraising	129,936		129,936
Total Supporting Services	606,542		606,542
<b>Total Expenses</b>	<b>3,820,942</b>		<b>3,820,942</b>
Change in Net Assets	(75,707)	203,611	127,904
Net Assets at Beginning of Year	541,575	1,779,150	2,320,725
<b>NET ASSETS AT END OF YEAR</b>	<b>465,868</b>	<b>1,982,761</b>	<b>2,448,629</b>

# TRCP BOARD, POLICY COUNCIL & STAFF

## TRCP BOARD OF DIRECTORS

- |  |  |   |   |
|--|--|---|---|
| <b>David D. Perkins, Chair</b><br>Vice Chairman: Orvis                                 | <b>Scott Blackwell</b><br>President: Tail-Spotter Consulting, LLC            | <b>Leslie Ketner</b><br>VP of Editorial Development: Pace Communications        | <b>Paul R. Vahldiek, Jr.</b><br>President & CEO: The High Lonesome Ranch                  |
| <b>Jim Martin, Vice Chair</b><br>Conservation Director: Berkley Conservation Institute | <b>George Cooper</b><br>Senior Vice President: Forbes-Tate                   | <b>J. Michael Nussman</b><br>President & CEO: American Sportfishing Association | <b>Howard Vincent</b><br>President & CEO: Pheasants Forever/Quail Forever                 |
| <b>John Doerr, Treasurer</b><br>President & CEO: Pure Fishing                          | <b>Katie Distler Eckman</b><br>Former Executive Director: Turner Foundation  | <b>Kirk Otey</b><br>Managing Member: First Title of the Carolinas               | <b>Eric Washburn</b><br>Partner: Windward Strategies                                      |
| <b>Connie Parker, Secretary</b><br>Principal: 12-North Capital LLC                     | <b>Sid Evans</b><br>Editor in Chief: Southern Living                         | <b>Ron Regan</b><br>Executive Director: Association of Fish & Wildlife Agencies | <b>Alan Wentz</b><br>Former Senior Group Manger of Conservation Programs: Ducks Unlimited |
| <b>F. Weldon Baird</b><br>Managing Partner: The Baird Group                            | <b>Mike Fitzgerald, Jr.</b><br>President: Frontiers International Travel     | <b>Liz Storer</b><br>President & CEO: George B. Storer Foundation               | <b>Rollin D. Sparrowe, Emeritus</b><br>Former President: Wildlife Management Institute    |
| <b>James A. Baker IV</b><br>Partner: Baker Botts, LLP                                  | <b>John Q. Griffin</b><br>CEO: Transcendent Endeavors                        | <b>Richard Trumka</b><br>President: AFL-CIO                                     | <b>Matt Connolly, President Emeritus</b><br>President: Bonefish & Tarpon Trust            |
| <b>Jo Ann Barefoot</b><br>CEO: Jo Ann Barefoot Group                                   | <b>Frank Hugelmeyer</b><br>President & CEO: The Outdoor Industry Association |   |   |

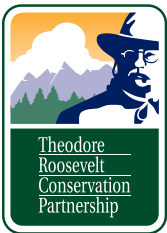
## TRCP POLICY COUNCIL

- |   |   |  |   |
|---|---|--|---|
| <b>Jim Martin, Chair</b><br>Berkley Conservation Institute          | <b>John Devney</b><br>Delta Waterfowl                           | <b>Mike Leahy</b><br>Izaak Walton League of America                  | <b>Gordon Robertson</b><br>American Sportfishing Association          |
| <b>Steven Williams, Vice Chair</b><br>Wildlife Management Institute | <b>Brett Fitzgerald</b><br>Snook & Gamefish Foundation          | <b>Jen Mock Schaeffer</b><br>Association of Fish & Wildlife Agencies | <b>Mike Schlegel</b><br>Pope & Young Club                             |
| <b>Aaron Adams</b><br>Bonefish & Tarpon Trust                       | <b>Dave Gagner</b><br>National Fish & Wildlife Foundation       | <b>Miles Moretti</b><br>Mule Deer Foundation                         | <b>Russ Shay</b><br>Land Trust Alliance                               |
| <b>Kirk Bailey</b><br>Outdoor Industry Association                  | <b>Gene Gilliland</b><br>B.A.S.S. Conservation, B.A.S.S. LLC    | <b>Steve Moyer</b><br>Trout Unlimited                                | <b>Ed Shepard</b><br>Public Lands Foundation                          |
| <b>Laura Bies</b><br>The Wildlife Society                           | <b>Steve Hall</b><br>International Hunter Education Association | <b>Dave Nomsen</b><br>Pheasants Forever/Quail Forever                | <b>Desiree Sorenson-Grove</b><br>National Wildlife Refuge Association |
| <b>Thomas Bigford</b><br>American Fisheries Society                 | <b>Bob Hayes</b><br>Coastal Conservation Association            | <b>Gaspar Perricone</b><br>Bull Moose Sportsmen's Alliance           | <b>Land Tawney</b><br>Backcountry Hunters & Anglers                   |
| <b>Ben Carter</b><br>Dallas Safari Club                             | <b>Kevin Hisey</b><br>The Pope & Young Club                     | <b>Christy Plumer</b><br>The Nature Conservancy                      | <b>Gary Taylor</b><br>Ducks Unlimited                                 |
| <b>Howard Cushing</b><br>New York State Conservation Council        | <b>Becky Humphries</b><br>National Wild Turkey Federation       | <b>Steve Riley</b><br>North American Grouse Partnership              | <b>Tom Trotter</b><br>AFL-CIO   |

## TRCP STAFF & CONSULTANTS

- |   |   |  |   |
|---|---|--|---|
| <b>Whit Fosburgh</b><br>President & CEO                                 | <b>Thomas Franklin</b><br>Senior Director of Science & Policy | <b>Sarah Kempke</b><br>Communications Associate                  | <b>Eric Petlock</b><br>Nevada Field Representative                      |
| <b>Ed Arnett</b><br>Center for Responsible Energy Development, Director | <b>Jimmy Hague</b><br>Center for Water Resources, Director    | <b>Tim Kizer</b><br>Private Lands Field Representative           | <b>Alex Schenck</b><br>Government Relations Associate                   |
| <b>Kendra Bailey</b><br>Grants Manager                                  | <b>Bob Hale</b><br>Director of Finance                        | <b>Steve Kline</b><br>Director of Government Relations           | <b>Mia Sheppard</b><br>Oregon Field Representative                      |
| <b>Steve Belinda</b><br>Senior Policy Advisor - Energy                  | <b>John Hamill</b><br>Arizona Field Representative            | <b>Chris Macaluso</b><br>Center for Marine Fisheries, Director   | <b>Jonathan Stumpf</b><br>Manager of Communications & Online Engagement |
| <b>Catherine Brady</b><br>Development & Marketing Coordinator           | <b>Jenni Henry</b><br>Director of Development & Marketing     | <b>Katie McKalip</b><br>Media Relations Director                 | <b>Neil Thagard</b><br>Western Outreach Director                        |
| <b>Brian Clow</b><br>Executive Assistant & Office Manager               | <b>Hal Herring</b><br>Montana Field Representative            | <b>Geoff Mullins</b><br>Chief Operating & Communications Officer | <b>Coby Tigert</b><br>Idaho Field Representative                        |
|   |   | <b>Nick Payne</b><br>Colorado Field Representative               | <b>Joel Webster</b><br>Center for Western Lands, Director               |

# OUR PARTNERS



1660 L ST. N.W., SUITE 208  
WASHINGTON, DC 20036

[WWW.TRCP.ORG](http://WWW.TRCP.ORG)

202-639-TRCP (8727)

[FACEBOOK.COM/THETRCP](https://www.facebook.com/thetrpcp)

[TWITTER.COM/THETRCP](https://twitter.com/thetrpcp)