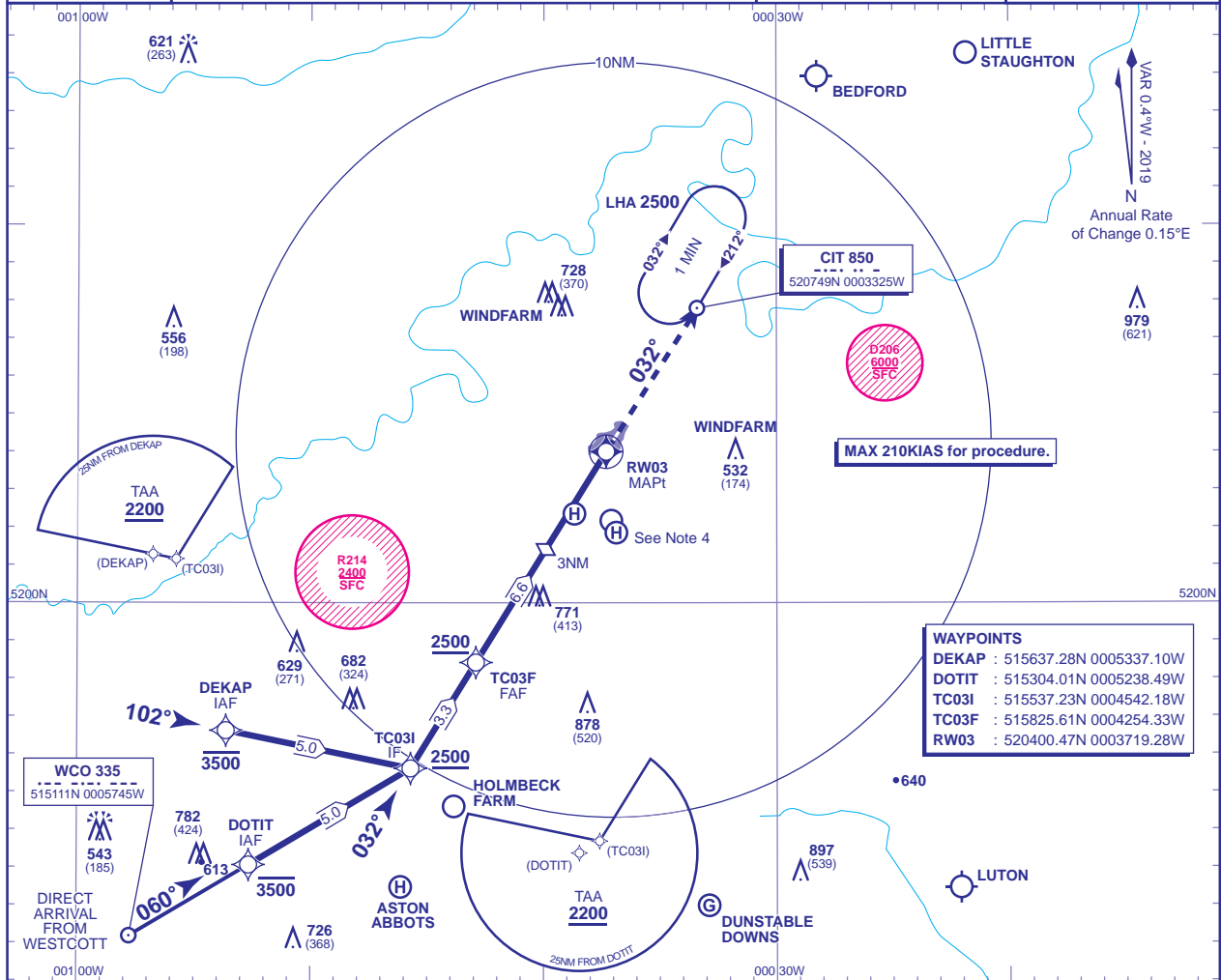


INSTRUMENT APPROACH CHART - ICAO

**CRANFIELD**  
**RNAV (GNSS)**  
**RWY 03**  
(ACFT CAT A,B,C)

<p>MSA 25NM NDB CIT</p>	APP 122.855	CRANFIELD APPROACH	AD ELEVATION 360
	TWR 134.930, 122.855	CRANFIELD TOWER	THR ELEVATION 358
			OBSTACLE ELEVATION 979 AMSL (621) (ABOVE THR)
			BEARINGS ARE MAGNETIC
			TRANSITION ALTITUDE 6000

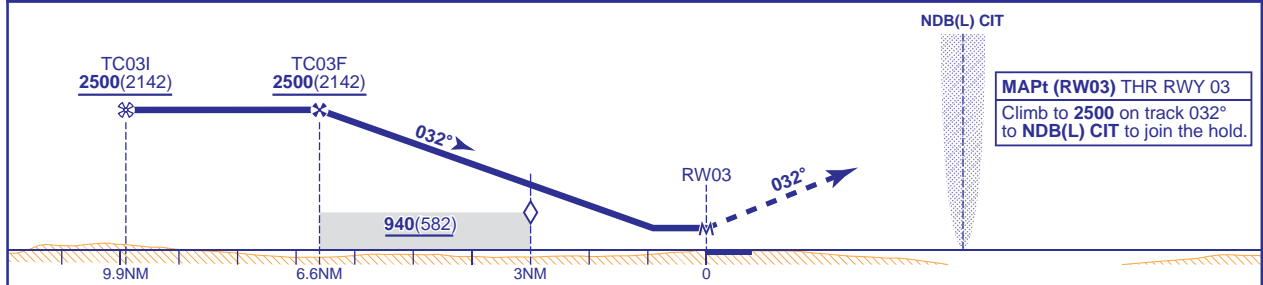


**WAYPOINTS**

DEKAP	: 515637.28N 0005337.10W
DOTIT	: 515304.01N 0005238.49W
TC03I	: 515537.23N 0004542.18W
TC03F	: 515825.61N 0004254.33W
RW03	: 520400.47N 0003719.28W

RECOMMENDED PROFILE Gradient 5.2%, 320FT/NM

NM	6	5	4	3 (SDF)	2	1
ALT(HGT)	2320(1962)	2000(1642)	1680(1322)	1360(1002)	1040(682)	730(372)



<b>Aircraft Category</b>		A	B	C	<b>Rate of descent</b>	<b>G/S KT</b>	160	140	120	100	80
<b>OCA (OCH)</b>	<b>LNAV</b>	690(332)	690(332)	690(332)		<b>FT/MIN</b>	850	740	630	530	420
<b>VM(C)OCA (OCH AAL)</b>	<b>Total Area</b>	800(440)	970(610)	1150(790)							

**NOTE 1** CIT NDB(L) hold restrictions: MAX holding level 5000, MAX 180KIAS.  
**NOTE 2** Missed Approach Procedure uses conventional navigation aids and is not available without NDB(L) CIT.  
**NOTE 3** Intensive glider activity takes place beneath the LTMA in VMC and in IMC.  
**NOTE 4** Occasional light aircraft and helicopter activity at Salford Helipad (520222N 0003841W), Hulcote Farm (520211N 0003706W), and Helimech Helipad (520152N 0003653W).  
**NOTE 5** Aircraft may be requested to report crossing the DTY115 radial.

CHANGE (10/18): FREQUENCIES.

AERO INFO DATE 02 JUL 18