



## INNATE IMMUNITY

# Apoptosis & Cell Viability

Part of AbD Serotec  
Innate Immunity Range

### Research Areas

- **Apoptosis & Cell Viability**
- Complement
- Cytokines & Chemokines
- Pattern Recognition Receptors
- Toll-like Receptors

### Cell Types

- Dendritic Cells
- Macrophages
- NK Cells & Receptors

## Application specific antibodies and reagents for immunological research

AbD Serotec offers an extensive range of antibodies, detection reagents and kits covering apoptosis, autophagy and general cell viability. Product highlights include:

- Antibodies and kits for the detection of initiator and effector caspases
- Antibodies for the analysis of death receptor signaling
- Antibodies for autophagosome research

### Featured Product: Murine anti-Bcl-2 antibody (MCA1550)

The apoptosis regulator Bcl-2 plays an important role in cell survival by controlling the permeability of the outer mitochondrial membrane. Murine anti-Bcl-2 antibody (MCA1550, clone 100) is frequently used in Immunohistochemistry and has been successfully applied to demonstrate the presence of Bcl-2 in tissues of radioresistant squamous cell carcinoma Condon LT et al. (2002).

#### Cited Reference:

Condon LT et al. (2002). Overexpression of Bcl-2 in squamous cell carcinoma of the larynx: a marker of radioresistance. *Int J Cancer* 100(4):472-5.

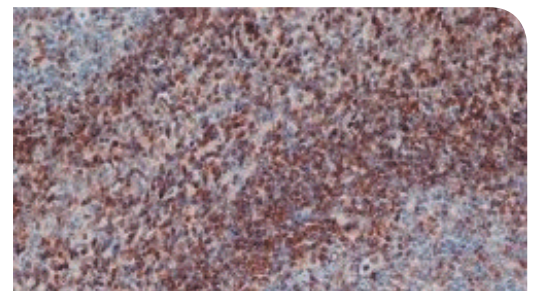
**Citations:** 11

#### Applications:

Flow Cytometry, Immunohistochemistry - frozen and paraffin, Immunoprecipitation and Western Blotting

#### Related Products:

Mitochondrial Membrane Potential MitoPT™ TMRE Kit (ICT946), Mitochondrial Permeability Transition: MitoPT™ JC-1 Kit (ICT943, ICT944)



#### Anti-human Bcl-2 (MCA1550) Immunohistochemical staining

Paraffin embedded human tonsil stained with mouse anti-human Bcl-2 (MCA1550) blocked with peroxidase block (BUF017B) and visualized using HISTAR Detection System (STAR3000).

AbD Serotec offers a broad range of products for studying apoptosis & cell viability. A selection of products is shown in the tables below, for a full product listing go to [abdserotec.com/apoptosis](http://abdserotec.com/apoptosis)

## Kits

Description	Applications	Product Code
Annexin V: Biotin Assay Kit	FC	ANNEX300B/ ANNEX100B
Annexin V: FITC Assay Kit	FC	ANNEX300F/ ANNEX100F
FAM FLICA™ Caspase-6 Kit	FC, IF/ICC	ICT096
FAM FLICA Caspase-2 Kit	FC, IF/ICC	ICT918
FAM FLICA Caspase-9 Kit	FC, IF/ICC	ICT913
FAM FLICA Caspase-8 Kit	FC, IF/ICC	ICT910
FAM FLICA Caspase-10 Kit	FC, IF/ICC	ICT923
FAM FLICA Caspase-1 Kit	FC, IF/ICC	ICT098
FAM FLICA Caspase-3/7 Kit	FC, IF/ICC	ICT094
FAM FLICA Poly Caspase Kit	FC, IF/ICC	ICT091
SR FLICA Caspase-9 Kit	FC, IF/ICC	ICT960/961
SR FLICA Poly Caspase Kit	FC, IF/ICC	ICT917
APO-BrdU-IHC™ Immunohistochemistry Kit	IHC-F, IHC-P	APO002
APO-BrdU™ Flow Cytometry Kit	FC, IF/ICC	APO001
Mitochondrial Membrane Potential Kit	FC, IF/ICC	ICT946
Mitochondrial Permeability Transition Kit	FC, IF/ICC	ICT944/ICT943
Magic Red™ Cathepsin B Kit	IF/ICC	ICT938
Magic Red Cathepsin K Kit	IF/ICC	ICT939
Magic Red Cathepsin L Kit	IF/ICC	ICT942

## Anti-Mouse

Specificity	Clone	Applications	Formats	Product Code**
CD120a (TNFR1)	HM104	FC	RPE	MCA2078PE
CD27	LG.3A10	FC, IHC-F, IP	Pur, Biot, FITC, RPE	MCA4701
CD279	RMP1-30	FC	Pur, A488, A647, PB	MCA2464
CD178 (FasL)	MFL4	FC, FN	Pur, A488, A647, FITC, LE, RPE	MCA2896
p53	PAb240	IP, WB*	Pur	MCA909
CD253 (TRAIL)	N2B2	FC	Pur	MCA4710GA

## Reagents

Specificity	Clone	Applications	Formats	Product Code**
BrdU	BU1/75 (ICR1)	FC*, IF/ICC, IHC-P*	Pur, A488, Biot, FITC, HRP	MCA2060
alamarBlue®	N/A	E, FN, IF/ICC	N/A	BUF012A/ BUF012B

## Anti-Human

Specificity	Clone	Applications	Formats	Product Code**
CD95	LOB 3/17	FC, IP	Pur, A647, FITC, RPE	MCA1539
CD95	LOB 3/11	FC, FN, IHC-P, IP	Pur, Az Fr	MCA1540
Granzyme B	GB7	IHC-P*, WB	Pur	MCA2118
Granzyme B	GB10	E	Biot	MCA2119B
Granzyme B	GB11	E, FC*, IF/ICC, IHC-F, IP	Pur	MCA2120
CD120a (TNFR1)	H398	E, FC, FN, R	Pur, A647, Az Fr, FITC, RPE	MCA1340
CD120b (sTNFR1)	Polyclonal	E, FN, IF/ICC, WB	Pur, Biot	AHP1833
Bcl-2	100	FC*, IHC-F, IHC-P*, IP, WB	Pur	MCA1550
Bcl-2	Precision Ab™	WB	Pur	VMA00017
Cytochrome C	2G8	E, FC*	Pur	MCA2740
CD27	LT27	FC, IP	Pur, A647, Az Fr, FITC, RPE	MCA755
CD279	M1H4	FC, IHC-F	Pur, A488, A647, FITC, RPE	MCA2628
CD279	Polyclonal	IHC-P*, WB	Pur	AHP1705
CD178 (FasL)	14C2	E, FC*, IP	Pur, A488, A647, RPE	MCA2409
DR3	Polyclonal	IHC-F, WB*	Pur	AHP437
BID	Polyclonal	E, WB	Pur	AHP1073
p53	DO-1	E, IHC-F, IHC-P*, IP, WB	Pur, Biot, FITC, RPE	MCA1701
p53	Precision Ab	WB	Pur	VMA00019
CD261 (DR-4/TRAIL-R1)	Polyclonal	IHC-F, WB	Pur	AHP439
CD262 (DR-5/TRAIL-R2)	DJR2-4	FC, IF/ICC	Pur	MCA4638T
CD262 (DR-5/TRAIL-R2)	Polyclonal	E, FC, IHC-P	Pur	AHP1806
CD262 (DR-5/TRAIL-R2)	Polyclonal	IHC-F, WB	Pur	AHP488
CD263 (DcR1)	2B8	FC, IP	Pur, A488, A647, FITC, RPE	MCA2559
CD253 (TRAIL)	Polyclonal	IHC-P*, WB	Pur	AHP440
ATG16	Polyclonal	IHC-F, WB	Pur	AHP1893
ATG16	Precision Ab Poly-clonal	WB	Pur	VPA00086

\*Requires special treatment, refer to product datasheet.

\*\*Refer to the website for each format specific product code.

Abbreviations: Axxx= Alexa Fluor®, Az Fr = Azide Free, Biot = Biotin, E = ELISA, FC = Flow Cytometry, FN = Functional Assay, IF/ICC = Immunofluorescence/ Immunocytochemistry, IHC-F = Immunohistochemistry - Frozen (Cryostat), IHC-P = Immunohistochemistry - Paraffin, IP = Immunoprecipitation, LE = Low Endotoxin, PB = Pacific Blue™, Pur = Purified, R = Radioimmunoassay, WB = Western Blotting.