

# AMCS Vehicle Data Hub

On-vehicle system for LF RFID bin management with online data transmission

## Overview

The Vehicle Data Hub is a complete On-vehicle solution for reading RFID tags and collect vehicle data as part of the refuse collection process. It consists of a single unit with integrated GPRS, GPS, WiFi as well as RFID reading, the ability to handle I/O signals and CAN-bus data.

It is a modular system available in a variety of configurations. The RFID unit provides GPS tracking with GPRS communication and RFID reading modules to suit the customer application.

AMCS on-vehicle technology solutions are designed by our highly skilled team of engineers, specifically for the recycling and waste management industry.

AMCS on-vehicle technology has registered over 5 million bins and has been fitted on over 5,000 vehicles across local authorities and private recycling and waste management companies.

## Vehicle Data Hub



### GPS

GPS L1 C/A code: SBAS: WAAS, EGNOS, MSAS, GAGAN

### CAN

J1939, J1708 interfaces available (optional)

### I/O

8 Inputs, 4 Outputs, expansion available

### WiFi

Wlan 802.11 b/g

### GPRS

GPRS/GSM 850/900/1800/1900

### Communication

Encrypted for security  
Compressed to reduce data transfer cost and improve reliability  
Block transfer used to ensure reliability in poor network conditions

### RFID

Up to 4 RFID channels  
125kHz and 134,2 kHz reading capabilities

### Environment

Operating temperature -25 ~50 °C  
Environmental protection IP67

## Display box



### Display

Alphanumerical, 4 x 20, backlit display

### LEDs

High intensity Status LEDs indicating: Power, Lift, Good read, Error

### Environmental protection

IP67

### Temperature range

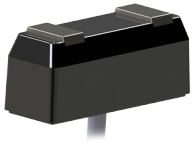
Operating temperature -25 ~50 °C

### Other

Display provides information on performed lifts.  
Lift-stop override button.

## AMCS Vehicle Data Hub

### Tooth Antenna 125 kHz

**Read rate**

> 99.9%

**Reading range**

> 10 cm

**Temperature range**

-40 °C to 80 °C

**Environmental protection**

IP68, IK06

**Life expectancy**

7 years at normal use

**Compliance**

EN1501, EN14803

**Other**

Metal frame protects the antenna against wear.

Easy replacement

### Lift detection sensor

**Display**

Alphanumeric, 4 x 20, backlit display

**LEDs**

High intensity Status LEDs indicating:  
Power, Lift, Good read, Error

**Environmental protection**

IP67

**Temperature range**

Operating temperature -25 ~50 °C

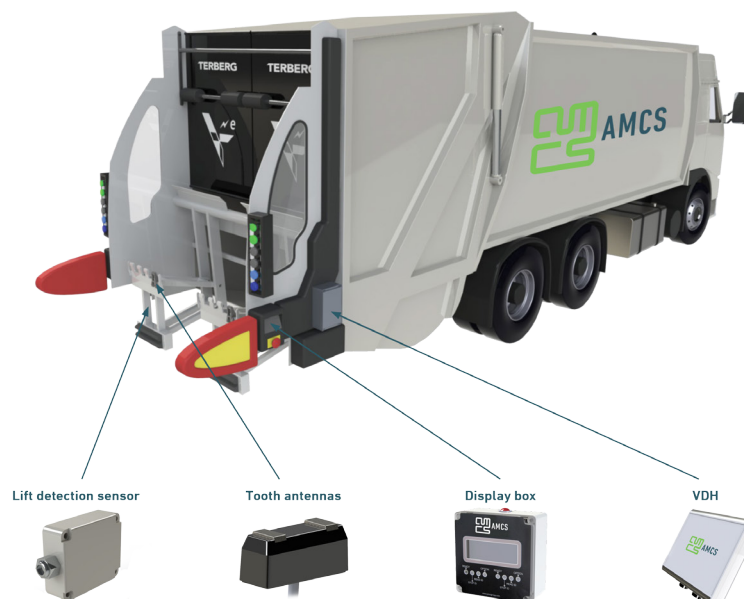
**Other**

Display provides information on performed lifts.

Lift-stop override button.

### About AMCS

AMCS is the leading supplier of integrated software and vehicle technology for the waste, recycling and material resources industries. We help over 1000 customers to reduce their operating costs, increase asset utilization, optimize margins and improve customer service.



AMCS

Website: [www.amcsgroup.com](http://www.amcsgroup.com)

Email: [sales@amcsgroup.com](mailto:sales@amcsgroup.com)

