

# Honeybourne Village News

April 2017



[www.honeybourne.org.uk](http://www.honeybourne.org.uk)  
50p in the shop

## HONEYBOURNE POTTERY

*Pottery activities for all ages & abilities*

**Weekly Classes, Birthday Parties,  
Holiday workshops, Schools & Education  
Hen Parties, Youth Groups, Clay Imprints**

Contact Alan & Annabel on 01386 830410  
[www.honeybournepottery.co.uk](http://www.honeybournepottery.co.uk)  
3 High Street, Honeybourne, WR11 7PQ

To advertise in the  
Honeybourne Village News  
please email  
[magazine@honeybourne.org.uk](mailto:magazine@honeybourne.org.uk)



Printing, photocopying  
and scanning.

Booklets, leaflets, fliers,  
invitations etc.

Black and white and colour.

Contact Claire on 07812 779854  
[Claire@poore-prints.co.uk](mailto:Claire@poore-prints.co.uk)

## MWS Aerial & Satellite Tel 01386 833342

- Freeview
- Freesat
- Radio and DAB
- Additional TV Points
- Additional Telephone Points

Free advice and quotations

CAI Member C. 1559  
Member of the Worcester Trader  
Register

[www.mws-aerial-satellite.co.uk](http://www.mws-aerial-satellite.co.uk)

email [info@mws-aerial-satellite.co.uk](mailto:info@mws-aerial-satellite.co.uk)



*Mobile Hair  
and Beauty*

*Complete Salon-Style Service in  
the comfort of your own home.*

*Fully qualified and experienced  
hairdresser and beauty specialist.*

*Only professional products used  
Wella L'Oreal Jessica etc.*

*Flexible appointments  
and personal attention.*

*Sue Williams 01386 832152*

*( Call anytime, but best time is 6 pm )*

# Letter from the Editor

Hello!

We have some good news! The cat pictured on our February issue has been identified and formally adopted by his new owners. Thank you to Phi Hickson for letting us know the happy outcome!

Once again there is too much going on in the village for me to spare a whole page to write to you. Instead I will let two Honeybourne youngsters tell you what they have been up to in the last few weeks.

Their team has reached the national finals, to be held at Silverstone racetrack this week. The cover photo shows the boys presenting their work to Year Six pupils at Honeybourne Primary Academy. Please visit their website [www.teamzoom.uk](http://www.teamzoom.uk) or like their page on facebook.

To include something in the village magazine, please email [magazine@honeybourne.org.uk](mailto:magazine@honeybourne.org.uk)  
Digital copies of the magazine can be downloaded from [www.honeybourne.org.uk](http://www.honeybourne.org.uk)

Claire Poore, Editor,

[magazine@honeybourne.org.uk](mailto:magazine@honeybourne.org.uk) - 01386 832800 - 47, School Street [www.honeybourne.org.uk](http://www.honeybourne.org.uk)

The last date for articles for the May magazine is 20th April.

## Back to school for young engineers!

Noah Booker and Charlie Rainey, both age 14 from Chipping Campden Academy, returned to Honeybourne Primary Academy to give a presentation about their team (Team Zoom) that took part in the 'F1 in Schools Technology Challenge'.



The F1 in Schools challenge is open to teams of students aged 9 to 19. The challenge mirrors that of a real Formula One team. Teams use Computer Aided Design (CAD) and Computer Aided Manufacture (CAM) software to design, analyse and manufacture a miniature model F1 car. The cars, which are powered by compressed air and travel at speeds of around 45mph, are then raced along a 20m track.

On top of all this, teams also have to create a pit display, write two portfolios to explain what they had done, perform a presentation to a team of judges and run a marketing and social media campaign to promote their project. They must also raise their own funds for the project by finding sponsors. Charlie Rainey said, "*We were only able to proceed with this enormous endeavour due to the sponsors that funded and aided the project. Many independent businesses in Chipping Campden donated money to fund*

*the project. We are also very grateful to Poore Prints of Honeybourne for sponsoring us by printing our portfolios and posters, and creating our website address."*

The team enjoyed performing their presentation to the primary school children, and then responded to the many questions the children asked about how the car was manufactured and about the project in general. The children also took part in the 'strapline' competition to find a suitable strapline for Team Zoom. Noah and Charlie were excited to be asked to return to the school in the future with the possibility of running a D&T session creating model cars with the children.

Team Zoom have already attended the regional final for the challenge at South Devon University near Exeter, winning awards for 'Fastest Car' and 'Best Sponsorship & Marketing', as well as achieving an overall second place on the podium. Due to their success, the team are moving forward to the national finals on the 29th and 30th March in the prestigious F1 venue at Silverstone and are busy with final preparations.

The team's progress can be followed on their Facebook page (Team Zoom) or webpage ([www.teamzoom.uk](http://www.teamzoom.uk) ). For more info about F1 in Schools, visit their website ([www.F1inschools.co.uk](http://www.F1inschools.co.uk) )

## **CPB PLASTERING**

**All aspects of plastering work:**

**Boarding, skimming,**

**rendering, screeding**

**Call CARL BENFIELD**

**Tel 01386 831673 or**

**07717 201 950**

**email [c-benfield@sky.com](mailto:c-benfield@sky.com)**

# Cotswold Foot Clinic

Dedicated to the care of your feet

Est. 2008



A member of  
The Alliance of  
Private Sector  
Practitioners and  
registered on their  
Accredited Register,  
accredited by  
the Professional  
Standards Authority

**Carole Graves** DipCFHP MPSPract  
Foot Health Practitioner

Treatments include:

Corn removal  
Callus reduction  
Nail trimming  
Foot massage

Diabetic foot care  
Verruca treatment  
Fungal infection



**Tel: 01386 834737**

**Email: [cotswoldfootclinic@btinternet.com](mailto:cotswoldfootclinic@btinternet.com)**

## PERSONAL WELLNESS COACH

### BACKGROUND:

- Bachelor of Sport Science, Exercise and Health
- Honours in Exercise Rehabilitation
- Accredited Exercise Physiologist
- Lecturer in Exercise Physiology
- Trained American Olympic ski team

**GROUP CLASSES**  
**BEGIN MONDAY-**  
**March 27<sup>th</sup> Village**  
**Hall**

- **Living Longer and Stronger** - Evidence based training progressive strength training and exercise specifically designed for the over 50s. Scheduled 12.30pm
- **Happy fit mums**- Welcome to bring babies/toddlers along or come without. 1.30- 2.30 pm  
Pick older kids up afterwards



## FEEL GOOD

**ONE ON ONE SESSIONS**  
**GROUP TRAINING**  
**SPORT/EVENT TRAINING**

### SPECIALISING IN;

- Weight loss and wellness
- Health and lifestyle management.
- Chronic disease management - arthritis, diabetes, osteoporosis and coronary heart disease.
- Matching your workout and diet to your body, lifestyle and goals.
- Injury management
- Specific programs for sport specific such as tennis and skiing.
- Goal setting and fun run preparation
- Optional training in the comfort of your own home.

**CONTACT CLAIRE - 07554 192 487**

**For more information and to reserve a place in the class.**

# HONEYBOURNE PARISH COUNCIL

## **Annual Parish Meeting**

The Honeybourne Annual Parish Meeting will be held on 18th April in the Village Hall at 7.30pm. The Parish Meeting may by law discuss all parish affairs and pass resolutions on them. All village organisations will be invited along to give their reports, also the police to give a local crime report and take questions.

## **Cricket Wicket for the Recreation Field**

The council's feasibility study confirmed a cricket wicket could be installed on the Recreation Field which prompted the Council to consider two quotations to permanently install the cricket mat on the field. After due consideration it was agreed not to proceed with the mat installation at this time but wait until the field sward improves and the pavilion is completed to ensure funds are available.

## **Major Planning Application Fancutts Garage, High Street**

Proposal: Planning application for the demolition of disused garage and erection of 8 dwellings, access, landscaping and associated works. The Council has no objection to the application as it will greatly improve the look of the site. The Council requested consideration is given to Sec 106 funding being allocated to highway improvement in High Street i.e. improved pavement safety by installing higher kerbing to prevent vehicles mounting the pavement on the bend near the site access on to High Street and any other possible highway improvements to improve visibility and manoeuvrability in the area of the site access and further south. WDC application number 17/00071/FUL

## **A VACANCY EXISTS FOR A PARISH COUNCILLOR TO BE FILLED BY CO-OPTION**

The Parish Council will consider filling the vacancy for a Councillor by co-option at a Council meeting following the receipt of validated applications. Anyone interested in serving the community and wants to become a candidate for co-option should obtain an application form for candidacy from The Clerk or phone Cllr David Cowan (Chairman) on 01386 831801

## **Village Hall Grant**

The Council considered the Village Hall committee's request for a grant to expedite their lottery funding application and to meet the lottery's very short timescale to lodge the funding application. The requested £4,800 grant is to enable the committee to make a fully detailed planning application for the old Village Hall site and then to have the site valued for the lottery funding application.

## **Recreation Field Mowing**

After very many mowing seasons Mr Ian Trout and Barry Matthews have finally hung up their mowers to have a grass free retirement. The Parish Council wished to make public, their thanks to Ian and Barry for all the free time and effort they put into keeping the field mown and tidy over many seasons.

*The Parish Council meets on the 2nd Tuesday of each month. Members of the public are welcome to attend meetings, which are held in the Village Hall and commence at 7.15 pm. Residents are welcome to speak on any issue of local concern during the Open Forum before the start of the meeting.*

Clerk John Stedman

1, Ban Brook Road, Salford Priors, Evesham, Worcs, WR11 8XE Tel 01789 773999:

E-mail: [j-stedman@btconnect.com](mailto:j-stedman@btconnect.com)

The Parish Office is open generally all day 10.00 am to 6.00 pm including weekends for all parish enquiries. Email is my preferred communication but my telephone is manned almost all day. The answer phone is on, but please ensure you state your business is with Honeybourne as my phone serves other Councils and my own business.

For up to Date Council information Visit [www.worcestershire.gov.uk/MyParish](http://www.worcestershire.gov.uk/MyParish) and then link to Honeybourne

---

## **Holy Week and Easter Day**

Our Holy Week services remind us of that last journey Jesus made to Jerusalem and to his crucifixion. Do come and join us for one or more of them. On 9th April, Palm Sunday we will process from the shop in Honeybourne to St Ecgwins at 10am as we recall Jesus riding on a donkey into Jerusalem; On 13th April, Maundy Thursday we will remember the last supper which Jesus shared with his friends when he washed their feet too, at a service at St Andrews, Aston Sub Edge at 7.30pm. On 14th April, Good Friday, beginning at Aston at 9.30am, we will travel around the churches in our benefice, taking a cross with us as a reminder of that journey when Jesus carried a huge cross to the site of his own execution. We will stop for a short time of quiet reflection and prayer at each church. At Willersey we will then go to the Methodist Church before erecting a life size cross on Sawpit Green. At 2pm we will return to St Ecgwins, Honeybourne to recall the sombre moments of Jesus' death on the cross. At 8pm on 15th April, Holy Saturday we will be lighting the first fire of Easter outside St Peter's, Pebworth. We then process into a darkened church which will be brought alive as we light our paschal candle, the symbol of Jesus as the Light of the World. And on Easter Day all 6 of our churches will be celebrating on Easter morning. Times of Easter Day services are on the church noticeboards. We would love to have you with us.

## **ANNUAL PAROCHIAL CHURCH MEETING**

**7.00 pm 23rd April 2017**

**In St Ecgwin's Church (after Evensong at 6.00 pm)**

**Including Treasurer's Report  
and the Election of Churchwardens,  
PCC Members and Sidespersons**

**All Welcome!**



## An Evening with Honeybees W.I

# HONEYBEES W.I.

On Monday 20th February Honeybees W.I enjoyed listening to Chris Edwards talk about Garden Birds. The titled 'I didn't know they did that!' did give some of us an clue that this was going to be just what we needed, a fun

packed evening. Chris was a joy to listen to which definitely brightened up our evening. He provided us with an excellent presentation which included stunning powerpoint pictures and soundtracks of our much loved feathered garden visitors. We all enjoyed listening to Chris's talk which was interspersed with amusing anecdote. I am sure we would all love to listen to another of his talks in the future.

The competition was for a Cartoon Bird, this was won by Hilary Coleman. On Monday 20th March, Sue Sollis will be talking to us about The Tracy Sollis Leukaemia Trust

On Wednesday 19th April, we are holding a Craft Evening, this always proves to be very popular with the members. More information regarding this creative evening will be available to see later on Facebook, honeybeeswi or please contact us on our email address: honeybees@gmail.com

Please come and join us @7:30 pm at Honeybourne Village Hall. You will be made to feel most welcome.

## **The Neighbourhood Development Plan and The Future of Honeybourne**

Important discussions are underway concerning the future of Honeybourne.

Everybody is welcome to get involved because the outcomes will affect you.

Please come to listen and contribute to discussions about how Honeybourne might be developed in the years to come.

Meetings are held at The Gate Inn at 7.30pm:  
19th April  
17th May



# Honeybourne Village Hall



The Village Hall Committee are delighted to have received a grant through Councillor Alastair Adams for a projector and screen to support our intention to set up a rural cinema in Honeybourne, and are very grateful for his help. This will create an opportunity to have a film night on a regular basis that the whole village can enjoy. We are intending to tie this in with the work going on to capture memories about Honeybourne and its people, and to have exhibitions and talks taking place alongside the rural cinema film nights.

It would be great to get more people in the Village involved in running this activity. Pebworth have recently established their Rural Cinema and we can learn from their experience, it isn't a big commitment. Do please get in contact if you would be willing to help!

We are making steady progress with our plans for the new Community Centre in Honeybourne. The Committee is looking at the options for the existing site as well as working on an application to the Big Lottery Reaching Communities Fund for a grant to support the construction of the new Centre. So far we have raised over £13,000 from Village organisations and individuals and by our fund-raising events, including the Village Show, and we are also grateful to the Parish Council for the support we have received from them.

Our new website is up and running at [www.honeybournevillagehall.org](http://www.honeybournevillagehall.org) and you can now enquire about bookings directly through the website bookings system.

If you would like more information or to get involved further, please contact:

Richard Kendrick, Village Hall Chairman, on [honeybournecommunitycentre@yahoo.co.uk](mailto:honeybournecommunitycentre@yahoo.co.uk) or

Rita Booth, Treasurer, on **01386 640696**

# Tomlins

## *Funeral Directors*

- 24 Hour Service
- Pre-payment Plans - Fully Guaranteed
- Private Chapels of Rest
- Monumental Masonry
- Modern Jaguar fleet

**60 Years of combined staff service to the community**

**36-37 The Leys, Bengeworth, Evesham**

**Tel: 01386 765 133**

**[www.tomlinsoftheleys.co.uk](http://www.tomlinsoftheleys.co.uk)**



# DAVID BAKER

## FUNERAL DIRECTORS

- 24 hr Caring Service
- Monumental Stone-masons
- Fully Guaranteed Pre Payment Plans

**98 High Street, Bidford-on-Avon**

**01789 773482**

Your Local Funeral Director  
Serving the community for over 20 years

**[www.mylocalfuneraldirector.co.uk](http://www.mylocalfuneraldirector.co.uk)**



# BED & BREAKFAST AT POTTER'S COTTAGE, HONEYBOURNE

~ Double en-suite room £68 per night

~ Twin en-suite room £58 per night

~ Entire cottage £110 per night

Contact Alan & Annabel on 01386 830410  
honeybournepottery.co.uk/bed-and-breakfast  
3 High Street, Honeybourne, WR11 7PQ

Honeybourne Village Hall are compiling photographs to display in the future under the title "Honeybourne in the Past".

If you have any photos or memorabilia which you think would be of interest, could you phone Doug Rushton on 01386 832274.

All photos will have the recipient's name acknowledged on the display if they so wish.

## RWH Accountancy Limited

Personal Tax Returns.....*From £ 95*

Sole Trade Accounts.....*From £ 295*

Company Accounts.....*From £ 495*

Other Services: Company Formations, VAT Returns, Bookkeeping, Payroll

Contact Richard: 07823 889711 – richard@rwhaccountancy.co.uk

# Corrine's Cleaning Service

- Office cleaning
- General cleaning & tidying
- Laundry & ironing
- light housework
- CRB Checked
- Competitive rates

Call: 07731 866 445 or

Email: [corrine.page2@googlemail.com](mailto:corrine.page2@googlemail.com)



**John Betts**  
Property maintenance  
General repairs  
Brickwork / stonework  
Patios / repointing  
Painting / roofing  
Fences / storm damage  
25 years' experience  
No job to small  
For a free quote  
Phone Offenham  
01386761379  
mob 07415144926

## Thenailandbeautyroom

*Salon professionalism without salon prices*



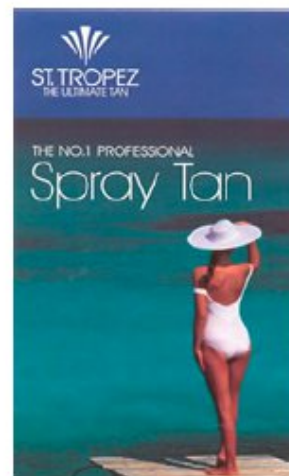
**Rose English MGBT**

*Nail Technician, Professional spray tanning & Beauty therapist*



### Treatments

**ST TROPEZ spray tan**  
**Calgel nails**  
**Clarins facials**  
**Manicures & pedicures**  
**Reflexology**  
**Aromatherapy**  
**Waxing**



**01386 833842 or 07900876406**

**Evening appointments available**

## BRETFORTON GARDEN CLUB

The well attended meeting welcomed new members and visitors. The secretary, Barbara Jenman, opened the meeting by introducing the new committee members and appealing for nominations for a Chairperson. She encouraged members not only to talk to the committee but also to contribute their ideas and photos to the monthly news letter.

The forthcoming local quiz at Blockley is on Wednesday the 22nd of March at 7:30 ,a team has been chosen to represent Bretforton. Members are encouraged to go along as the quiz format has been changed to include audience participation and should be fun.

Alison informed us that the outing to Barnsdale has been changed to the 8th of July.

Our speaker for the night was Julia Scott,she was warmly welcomed back to speak on Biodynamic Gardening and Herbs.As on her previous visit we were enthralled by her passionate and informative talk.Her own new enthusiasm for Moon Planting,an aspect of Biodynamic Gardening left us all amazed and very much looking forward to seeing it in action when the club visit her in August.In the question time that followed she said that those who want more information can visit a web site Lunar Organics. Com.

Bretforton Garden Club provides an opportunity for local people to learn about a variety of gardening topics in a friendly environment and enjoy interesting garden visits.We normally meet in Bretforton Memorial Hall, Main Street , Bretforton at 7:30pm on the first Thursday of the month.We have members from a number of villages and lifts can usually be arranged for anyone needing transport.We would be delighted to welcome any new members who wish to join, it only costs £5 a year.

Please ring Barbara Jenman on 01789 720514 or visit our website [www.bretfortongardenclub.co.uk](http://www.bretfortongardenclub.co.uk) for more information.

**ARE YOU NEW TO THE VILLAGE?  
ARE YOU 60 OR OVER?  
IF SO WOULD YOU LIKE TO COME AND JOIN THE  
WEDNESDAY CLUB?  
WE MEET THE FIRST WEDNESDAY OF EACH MONTH  
AT 2.30PM IN THE VILLAGE HALL  
WE WILL MAKE YOU VERY WELCOME  
WE HAVE A DIFFERENT SPEAKER AND TRIPS OUT  
EACH MONTH.**

**Mobile Library Time Table:  
Library visits on the 4th Friday of the month.**

<b>Grove Avenue:</b>	<b>12.05 - 12.20</b>	<b>Lower Westbourne:</b>	<b>12.25 - 12.40</b>
<b>Perrie Drive:</b>	<b>12.45 - 1.00</b>	<b>Weston Road:</b>	<b>1.05 - 1.15</b>
<b>LUNCH</b>		<b>Village Hall:</b>	<b>1.45 - 2.00</b>

## Ironing and Laundry Service

Reliable, top quality service

£12 per hour

Collected and delivered

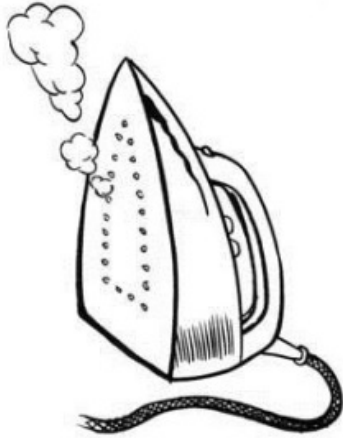
References available

Phone

**BEVERLEY**

**01386 831824**

**07779 103071**



## K925 Pet Services

- Dog walking
- Pet visits
- House sitting
- Fully Insured
- Disclosure checked
- References available

Covering Bretforton,  
Honeybourne and  
surrounding areas

Call Jo: 07912 160131

jo@K925petservices.co.uk  
www.K925petservices.co.uk



facebook  
Find us on Facebook



# Evesham Funeral Service

Independent Family Funeral Directors



# 01386 389585

Craig is available 24 hours a day.  
Please call for any assistance.



Golden Charter  
Funeral Plans



# EveshamFuneralService.co.uk

"Thank you for providing such a good service."

*Hannah Jones,  
Customer's Daughter,  
Bluebird Care  
Worcester & Wychavon*



## Bluebird Care Care in your home

We provide flexible and bespoke homecare and support services from 30 minute visits to 24 hour live in care.

Call us or email us today on [worcesterandwychavon@bluebirdcare.co.uk](mailto:worcesterandwychavon@bluebirdcare.co.uk).

Call today to  
find out more

**01386 764 830**

[bluebirdcare.co.uk/worcester-wychavon](http://bluebirdcare.co.uk/worcester-wychavon)



[www.indulgenceskincare.co.uk](http://www.indulgenceskincare.co.uk)



Indulgence Skin Care & Beauty  
Honeybourne

**25% off your 1st  
appointment**

Call fallon on 07814048166

J  
JESSICA

Sienna  
PROFESSIONAL SMOKEY TAIL

**dermalogica**<sup>®</sup>

a skin care system researched and developed by The International Dermal Institute

# Letter from the Curate

Dear Friends,

As we move from Lent towards our great celebration of Easter, we will re-live the drama of Jesus' last earthly journey which took him to the cross. For some that was a symbol of defeat. Those in power at the time thought that executing Jesus would put an end to his ministry - at that point it seemed like the end for his followers too - but it didn't end there. Three days later Jesus was among his followers again - no longer in the tomb - an event which remains both mysterious and real to this very day. Christians refer to this very special week before Easter Sunday as Holy Week which of course ends with Jesus' death on a cross.

Three days later we celebrate Easter Sunday with all sorts of symbols of new life and new birth - eggs, baby chicks, lambs, flowers and lighted candles because that is what we believe happened on that first Easter Day over 2000 years ago. Jesus overcame the power of death and lived again amongst his people. When Jesus' friends went to the tomb at the end of the Sabbath day they were expecting to find a dead body - but they found an empty tomb. Many efforts have been made since then to explain and dismiss the witness and experience of Jesus' disciples and close friends - men and women - but despite the most rigorous examination of the facts over the centuries no one has been able to offer a convincing set of arguments to dismiss their claims.

They were inspired by what they experienced - first of all great fear and then great joy because they were certain that Jesus was no longer dead. We cannot explain that in terms which completely make sense to our 21st century minds which demand a rational answer to all questions and all events. Indeed, those first century Christians couldn't describe their experience fully either. But we cannot dismiss the witness and experience and convictions of the men and women who were Jesus' disciples and close friends. It is their testimony which led to the founding of the Christian Church - still the largest single faith group in the world today.

Christian lives are grounded in the hope that Jesus gave us. That love will always be more powerful than evil. And so I invite you to come and see or learn for yourselves what it is we believe as we re-live the events of Holy Week and celebrate the greatest of our Christian festivals – Easter Day. There are many opportunities throughout Holy Week to join us and an Easter Sunday service in all six of our churches. You will be most welcome wherever you choose to be. As we celebrate together, I pray that you too will experience something of the wonder and mystery of Easter as those first disciples and friends of Jesus did - all those centuries ago.

I join with all my clergy colleagues in the Vale and Cotswold Edge Team Ministry and with Dr Israel Selvanayagan from our Methodist Church in Willersey to wish you all a very happy and joy filled Easter.

With love and blessings.

Celia.

Assistant Curate. Vale and Cotswold Edge Team Ministry.

Our contact details are:

Revd. Craig Bishop (Team Rector): [admin@stjameschurchcampden.co.uk](mailto:admin@stjameschurchcampden.co.uk) Tel. 01386 841927

Revd. Celia Woodruff: [celia.woodruff1@gmail.com](mailto:celia.woodruff1@gmail.com) Tel. 07807 899119

Revd. Dana Delap (Vicar of Blockley & Bourton on the Hill) [dana@delap.org.uk](mailto:dana@delap.org.uk) Tel. 01386 700676



Would you like to cycle but you don't own a bike?

Would you like to cycle but lack confidence?

Would you like to ride on the back of a tandem?

Then H-BUG (Honeybourne Bicycle Users Group) is able to help you.

H-BUG has access to a number of bikes that can be borrowed  
for H-BUG cycle rides.

There are no costs, and membership of H-BUG is entirely free.

**Bikes can be booked in advance by texting  
request to 07971 989 430**

## **Honeybourne Wednesday Club**

The Wednesday Club was held on March 1st and was the A.G.M. Twenty-nine members attended.

Anne Innes welcomed everyone to the meeting and gave birthday cards to Mrs Hutton, Mrs Valender, Mrs Haines and Mrs Abel.

The minutes of the 2016 AGM were then read out approved and signed. Balance sheets had been circulated beforehand for members to read and digest. As usual a good job done by the treasurer Olwen Humphreys showing a healthy balance. Win Russell then took the floor and gave a summary of the club's activities throughout 2016. Anne went onto thank Sylvia Matthews for organizing, with help, the refreshments each month.

Thanks to Tony Miles and John Keen for putting the tables and chairs out, and back each month, and thanks also to Peggy Miller who proposes a vote of thanks to the speakers at each month's meetings.

A list of outings for 2017 had been distributed to members along with a list of proposed speakers each month.

Maureen Hopkins who sells the raffle tickets at the monthly meeting surprised us all by volunteering to join the committee and was warmly accepted. The committee were all thanked for their hard work during the year: Anne Innes; Olwen Humphreys; Win Russell; Sylvia Matthews and your Secretary Val Taylor, who is new to the club makes mistakes but promises to get better!!

After the meeting and before Sylvia was set to work the members were shown how to make boxes, very social, hands on. Cakes this month were provided by Elsie Mobbs, Gill Taylor and Gillian Ellis.

April meeting on 5th and Ruby Lamont will entertain us by singing hits from the 1940s, '50s & '60s. I wouldn't be surprised if some of the ladies join in with the singing!!

Weddings • Occasions • Corporate Lunches

# Fiesta Cakes & Caterers

~ OF WICKHAMFORD ~



AWARD WINNING

# PARTY CATERING

- Special Event Catering
- Hot & Cold Buffets by Award Winning Chef
- Event Co-ordinator & Waiting Staff
- Decorative Balloons & Marquees Available
- Outside Bar & Pig Roasts
- Photo Image Cakes
- Food Hygiene Rating 4 Star
- All Produce Locally Sourced
- Open 7 Days a week • Free Quotations

OAP GROUP  
LUNCHES  
FISH & CHIP  
CLUB  
SUNDAY  
LUNCH CLUB

*FOR A HELPFUL, EFFICIENT AND COST EFFECTIVE SERVICE*

tel: **01386 834183**

email: [fiestacaterers@btconnect.com](mailto:fiestacaterers@btconnect.com)

~ TO VIEW OUR GALLERY VISIT ~

[www.fiestacatererswickhamford.co.uk](http://www.fiestacatererswickhamford.co.uk)

## Church Services - April 2017

	Pebworth	Dorsington	Honeybourne	Willersey	Weston sub Edge	Aston sub Edge
<b>2<sup>nd</sup> April</b> Lent 5/Passion Sunday	11.00 am Eucharist		9.00 am BCP Holy Communion	9.30 am BCP Holy Communion	11.00 am Eucharist	6.30 pm Evensong
<b>9<sup>th</sup> April</b> Palm Sunday	10.00 am Benefice Eucharist at Honeybourne					
<b>16<sup>th</sup> April</b> Easter Sunday	10.00 am Eucharist	11.00 am Eucharist	10.00 am Eucharist	10.00 am Eucharist – United Service with the Methodists	9.30 am Eucharist	6.30 pm BCP Holy Communion
<b>23<sup>rd</sup> April</b> Easter 2 St George	5.00 pm Pebworth in Bloom Service		6.00 pm Evensong & APCM	9.30 am Eucharist	9.30 am Eucharist	6.30 pm Evensong
<b>30<sup>th</sup> April</b> Easter 3	6.00 pm Evensong	11.00 am Eucharist	6.00 pm Evensong	10.30 am <b>United Service at the Methodists</b>		6.30 pm Evensong
<b>7<sup>th</sup> May</b> Easter 4	11.00 am Eucharist		9.00 am BCP Holy Communion	9.30 am BCP Holy Communion	11.00 am Eucharist	6.30 pm Evensong

## Holy Week 2017

	Pebworth	Dorsington	Honeybourne	Saintbury	St. Peter's Willersey	Willersey Methodist Church	Sawpit Green Willersey	Weston sub Edge	Aston sub Edge
<b>Palm Sunday</b> 9 <sup>th</sup> April	10.00 am Benefice Eucharist for Palm Sunday at Honeybourne								
<b>Monday</b> 10 <sup>th</sup> April		7.30 pm Compline							
<b>Tuesday</b> 11 <sup>th</sup> April								7.30 pm Compline	
<b>Wednesday</b> 12 <sup>th</sup> April					11.00 am BCP Holy Communion and Meditation				
<b>Maundy Thursday</b> 13 <sup>th</sup> April	7.30 pm The Eucharist of Maundy Thursday with foot washing at Aston sub Edge								
<b>Good Friday</b> 14 <sup>th</sup> April	1.15 pm At the foot of the cross	1.00 pm At the foot of the cross	2.00 pm The liturgy of Good Friday	10.10 am Journeying with the cross	10.45 am Journeying with the cross	11.30 am Journeying with the cross	12 noon	9.50 am Journeying with the cross	9.30 am Journeying with the cross  6.30 pm Meditation
<b>Holy Saturday</b> 15 <sup>th</sup> April	8.00 pm The Vigil, Renewal of Baptismal Vows, The first Eucharist of Easter at Pebworth								
<b>Easter Day</b> 16 <sup>th</sup> April	10.00 am Eucharist	11.00 am Eucharist	10.00 am Eucharist		10.00 am Eucharist – United Service with the Methodists			9.30 am Eucharist	6.30 pm Holy Communion

## **A 5.5-Mile Walk with wonderful views**

Sturdy shoes or boots are recommended.

This route is clearly signed (signposts and waymarkers)

Pets should be kept on leads at all times.

The walk starts at the Gate Inn. Adjacent to the pub car park is the footpath to the Church. Follow this path through two fields and into the churchyard. Keep to the left-hand edge and exit at the kissing gate. Follow the road round to the right until you arrive at the T-junction at the cemetery. Opposite you will see a stile in the right-hand corner near to the cemetery fence. Over this stile and another stile into the main field where you will follow the hedge on your left-hand side until you arrive at the stile onto the Mickleton Road. TAKE GREAT CARE when crossing this road.

Over the next stile into the field. Do not follow the direction of the signpost as this is incorrect, but head towards the railway bridge in the far left corner of this field. Over another stile and out onto Stratford Road. Turn right and, TAKING GREAT CARE, walk (facing the oncoming traffic) under the two railway bridges.

Immediately after the second bridge turn right onto the bridleway. Pass by the cattle grid and follow the tarmac surface to a large field gate. Pass through and follow the track up the hill. When you get to the footpath signpost at the top of the hill, turn around to admire the view – a lovely spot for a picnic (but remember to take your litter home with you!). You will see Honeybourne church below, and sweeping views including (from the left) Cutsdean Hill (305 m high), Oxenton Hill (223m), Dumbleton Hill (168m), Forest of Dean (up to 290m) with the Black Mountains (up to 886 m) behind, Bredon Hill (299 m) and the Malvern Hills (up to 425 m high).

Turn left and follow the footpath sign along the top of the hill with the fence on your right-hand side (hedge on left), you will pass through two large fields before passing a large barn and arriving at the Pebworth Road near the top of Baylis's Hill. Look over your right shoulder to see Meon Hill. TAKE GREAT CARE to cross the road and pass through the field gate. This is not a right of way, but you have permission to pass through on this walk \*. Walk along the stone track to the left-hand corner of this field, then turn right with the hedge on your left and head towards the metal gate; and then on to a stile in the far left-hand corner of this field.

Step over the stile and ditch bridge; cross the driveway, and look for a wooden ditch bridge near the left-hand hedge, then straight-ahead until you reach a ditch bridge leading onto a stile into the next field. Over the stile and straight-ahead to the next stile on the opposite side of the field. Over the stile, then straight ahead to the next stile (to the left of the track). Over this stile then walk straight-ahead with the hedge on your right until you meet a small metal frame that you should take care to climb over. Continue in the same direction until you meet another stile leading onto the road. Turn right and follow the highway for 200 meters to the church. Enjoy a stroll around the grounds before retracing your steps back to Honeybourne.

We hope you have enjoyed your walk today, and that we have whetted your appetite for a variety of future walks in and around the Parish of Honeybourne.

\* To obtain permission to access this and other walks in the Heart of England Forest telephone  
01789 491 391

Email [steve@stephenbullen.com](mailto:steve@stephenbullen.com) for copies of any walks, to express concerns, or seek advice on how to best enjoy Honeybourne's Rights of Way.

## CHURCH ANNOUNCEMENT

**We are delighted to announce Revd Scott Watts will be the next Team Vicar serving the parishes of Aston-sub-Edge, Dorsington, Honeybourne, Pebworth, Weston-sub-Edge and Willersey.**

Scott writes:

*Dear friends,*

*Ros and I are looking forward to getting to know all of you in the Church family and beyond and to working with you to share God's love and life in our communities.*

*I feel thankful and privileged to have been offered the post of Team Vicar and to have the opportunity to work alongside Craig and Dana as part of the Vale and Cotswold Edge Team Ministry.*

*Please pray for us during this time of transition and know that we are already praying for you. See you in June!*

*With love in Christ, Scott and Ros*

Scott's licensing by Bishop Rachel and the new archdeacon of Cheltenham, Phil Andrew will be held on Wednesday 28th June at 7pm, the venue is to be confirmed.

### H-BUG

**Honeybourne Bicycle Users Group**

Every Honeybourne child now has the opportunity to cycle.

The village (H-BUG) has bikes for 6-10 year olds to borrow and also bikes that parents can borrow - all completely free of charge.

There is a short family cycle ride every month on the last Saturday of the month at 2.00pm from the village hall.

Bikes can be booked in advance by texting request to  
07971 989 430

**Rotas for Services – Honeybourne – April 2017**  
**Due to the change in the benefice please check all times/venues during month**  
**with notice board**

SERVICE	SIDESMAN	READER	INTERCESSOR	FLOWERS	CLEANING ROTA
Sunday April 2 <sup>nd</sup> 9.00am Communion <i>Lent 5</i>	L O'Connell Edwards M Edwards	L O'Connell Edwards	Minister	Lent	T Banks
Sunday April 9 <sup>th</sup> 10.00am Benefice Communion <i>Palm Sunday</i>	A Taylor S Matthews	A Taylor	A Taylor	Lent	S Matthews D Griffiths
Sunday April 16 <sup>th</sup> 10.00am Communion <i>Easter Day</i>	M Edwards L O'Connell Edwards	M Edwards	M Miller	S Matthews	M Miller
Sunday April 23 <sup>rd</sup> 6.00pm <i>Easter 1</i>	M Merrett	M Merrett	Minister	S Matthews	A Taylor
Sunday April 30 <sup>th</sup> 6.00pm <i>Easter 2</i>	M Edwards	M Edwards	Minister	S Matthews	T Banks

**CHURCHWARDENS:** Mrs. Mary Miller Tel: 831998  
Mrs Sylvia Matthews Tel: 832215

**BRASS CLEANING:** Mrs M Merrett Tel: 832610  
Mrs P Powell

## CHURCH NEWS

Dear Friends

Dates for your diary

As you know the Church sponsors three charities during the year: a local, a national and an international one. This year the P.C.C. have chosen the following:-

Local – Winston's Wish – carol service

National – SSAFA – Remembrance Day Service to support our Service personnel

International – Water Aid – May 21st Communion Service

We welcome any donations that you would like to give during the month in which these events take place also by your support at these services.

We are still looking for help with the church cleaning, so please give me a ring if you can help  
Mary Miller Churchwarden – 01386 831998

# MH Carpentry



Time served craftsman &  
qualified teacher of carpentry;  
specialising in:

- Decking
- Doors
- Windows
- Flooring- wood / laminate
- Locks
- Fencing
- Roofing
- CCTV installation
- Any projects to do with wood
- Snagger for new builds

No job too small, Competitive prices  
Free estimate in local area

Call Matt 07803 608813 / 01386 642885  
email [matt-henson@hotmail.co.uk](mailto:matt-henson@hotmail.co.uk)

# Jo Martin Youth Dance

*A recreational dance class for boys and girls  
age 5-16, welcoming all abilities.*

*Offering street, jazz and contemporary dance.*

Tuesday

**JMYD Juniors 5-10 years old 6-6.45pm**

**JMYD Seniors 11-16 years old 7-8pm**

£3 a class, per person

**Offenham Village Hall**

For more information contact:

Jo Martin

07581328329

jomartin89@hotmail.com



Professional  
Member of  
**People  
Dancing**  
the foundation for  
community dance



# Merstow Green

FUNERAL HOME, EVESHAM

For over 25 years Philip Tomlins and his family have provided individual care to the residents of the Vale of Evesham.

Based in Merstow Green, at the heart of Evesham, we can help you plan ahead and provide a comforting guiding hand when it matters most.

Telephone:

**01386 49903**

24 hours



Philip Tomlins DipFD

Call **Philip** direct for support, care and reassurance in your time of need

**Plan Ahead, pre-paid and bespoke arrangements**

Spread the costs and concern of your personal requirements with our pre-paid funeral planning service for yourself or a relative.

**Green Funerals and Woodland Burials**

From environmentally friendly caskets to full woodland burials, Merstow Green are able to advise on all service types.



[www.MerstowGreen.co.uk](http://www.MerstowGreen.co.uk)



# MAKE MORE OF YOUR FREE TIME AND VOLUNTEER WITH EVESHAM SEA CADETS

Evesham Sea Cadets needs volunteers who are happy to roll up their sleeves, get involved and make a positive difference to the lives of young people in the area.

The unit has lots of roles to match your skills and offers training to help you gain more. Make more of your free time in the evening by showing cadets how to sail, powerboat, kayak or windsurf. Volunteers are also needed to teach first aid, football, mountain biking, navigation and drill.

Petty Officer Jodi Cotton the unit's officer in charge said: "We welcome all adults living in the area to pop in to the unit when we're open to meet other volunteers and cadets, have a tour of the unit, and have a chat about any roles that suit you. Don't be put off if you haven't got any relevant qualifications, all you need is basic knowledge and lots of enthusiasm.

"We need your help to keep inspiring young people through nautical adventure and to keep giving them the best possible head start in life."

Volunteers are supported by a network of other volunteers and employees. As a new volunteer, you will receive an induction and will be given training and support to make you feel comfortable in your role. Sea Cadets is always there to provide ongoing help and support.

Evesham Sea Cadets has supported thousands of young people in Evesham and surrounding villages to learn nautical skills, with 38 cadets currently attending, supported by 12 volunteers. However, more are always welcome.

Evesham is part of national charity Sea Cadets, which gives young people a new perspective. We broaden horizons and create possibilities. Working across the UK with 14,000 young people between 10 and 18, we help them see the world with confidence, gained through the challenge of nautical adventure and a Royal Navy ethos. Our aim is to help more young people to see the future that they want – and make that future happen.

The unit is open Monday from 19:00 - 21:30 and meets at Shinehill Lane, South Littleton. For more information, please contact: Jodi Cotton on 01386 833383 or [coevesham@gmail.com](mailto:coevesham@gmail.com)

## **Interested in hiring the Village Hall?**

Go to our website [www.honeybournevillagehall.org](http://www.honeybournevillagehall.org) and click on bookings, or ring Rita on 01386 640696 about regular bookings and Sylvia on 01386 832215 about one-off events

# A J HICKMAN ELECTRICAL

E: ajhickmanelectrical@aol.com

As a business our aim is to provide a **high quality** service so our customers receive **top quality** install and satisfaction on the whole service at a very **competitive price.**

- New Build Installs
- Rewires
- Fuseboard Upgrades
- Additional Power Points / Lights
- External Lighting
- Any Aspects of Electrical Work
- Additional BT Points
- Additional TV Points

Electrical Safety Register

incorporating  
ELECSA + ECA  
Certification Ltd



TEL: 01386 831258

MOB: 07976 052828

The logo for Hairs &amp; Graces Unisex Hair Salon features ornate scrollwork at the top and bottom. The text 'HAIRS &amp; GRACES' is prominently displayed in a large, serif font, with '&amp;' in a smaller font between the words. Below this, 'UNISEX HAIR SALON' is written in a smaller, sans-serif font, flanked by two pairs of scissors. At the bottom, the phone numbers '01386 257170' and '07429 287037' are listed, along with the email address 'contact@hairs-graces.co.uk'.

Visit us at:

Unit 28

Two Shires Park

Honeybounne

WR117QF

Open Tuesday –  
Saturday

You can also find us  
on Facebook

# News from your District Councillor & County Councillor Alastair Adams

## Honeybourne News edition – April 2017

Dear Residents,

Happy Easter and enjoy the holidays and the Easter eggs!

For some people Easter will be about revision for the forth coming GCSE's, A'levels and degrees and finishing those projects and assignments. My daughter is doing her A'levels and my middle son is in his final year of his degree, and the amount of work expected nowadays to pass these examinations seems a lot more than I can remember. For everybody studying over Easter, I wish you the greatest success, and may all your dreams come true.

Road works - Spring and the warmer weather brings the regular Highways maintenance programme to life, and works have already started around our area in many villages to re-tarmac and improve our roads and pavements. So please be patient, there will be a lot of temporary traffic lights and some diversions so add a little time to your journeys. Also be aware of loose stones, and leave some distance between you and the car in front and drive a little slower – you don't want a cracked windscreen.

Speeding – Speeding seems to be an ever greater issue for many villages even though we now have mobile speed cameras in the area, and I have been told that these vans are issuing 12 tickets an hour. Don't get caught, slow down! Please respect the speed limits in your village and all the villages around here.

Neighbouring Villages – I cover eight parishes and I am always amazed on the number of clubs, and community groups that are organising events every month from rural cinema to short mat bowls, senior clubs to youth clubs, WI to Heritage Trusts; there is a lot going on. As each village has a website, I have suggested each village has a link to all their surrounding villages so any resident can see what is going in their neighbouring villages.

See your neighbouring parish websites:-

[www.southlitleton.org.uk](http://www.southlitleton.org.uk)    [www.pebworth.org](http://www.pebworth.org)

[www.northandmiddlelitleton-pc.gov.uk](http://www.northandmiddlelitleton-pc.gov.uk)    [www.offenhamvillage.co.uk](http://www.offenhamvillage.co.uk)

[www.badsey.org.uk](http://www.badsey.org.uk)    [www.cleeveprior.org.uk](http://www.cleeveprior.org.uk)

Well done to Michael Poore who looks after [www.honeybourne.org.uk](http://www.honeybourne.org.uk) as he has added all these village websites to your home page. So make sure you have a look at what is going on in your neighbouring villages.

Highways issues:

1. Road Markings in High Street – Highways have been asked to re-paint the “SLOW” markings see ref 290812 on the WCC Report It web site
2. Road Markings in Stratford Rd - Highways have been asked to re-paint the “30mph” markings see ref 290804 on the WCC Report It web site
3. New bollards fitted to the raised pavement in the High Street- completed
4. 30mph signs moved further along out of the village along Bretforton Rd – completed

As always, if you have any issues on any Highways matters, please report it on the WCC website [http://www.worcestershire.gov.uk/homepage/98/report\\_it](http://www.worcestershire.gov.uk/homepage/98/report_it) Also remember a photo of the Highways problem is as good as “a thousand words” so always take a photo where possible.

Perrie Drive and Fernihough Avenue Residents Save our Greens - A large number of residents attended the Honeybourne Parish Council meeting on 14th March, and asked the councillors to support the residents in their mission to get the Greens classified as an Asset of Community Value. The Wychavon District Council Localism Panel did a site visit on the 15th March 2017 to see the Greens, and will soon make a decision.

Divisional Funds. As it is the end of the Council’s financial year at the end of this month, there was a flood of applications for grants from local groups. I was pleased to be able to help them as follows:-

1. Honeybees WI have put in a request for some new tables – grant £600 paid

2. Honeybourne Village Hall wanted some help to set up a rural cinema – grant of £1745 paid for a projector and a screen

3. Littletons Juniors want some help with a new football kit for the team, and some footballs - grant processed

4. Cleeve prior Short Mat Bowls Club wanted some help with a new mat. The existing one is 30 years old - grant processed

5. Bretfest – Bretforton Music festival 15th – 22nd July wanted some help with the hire of a piano for the event - grant processed

6. Cleeve Prior Chroniclers wanted a document display stand to hold all the historical information on the village - grant processed

7. Pebworth Rural Cinema wanted some help with a new BluRay player and marketing material - grant processed

8. Cleeve Prior Wharf – grant requested for life buoy, table and sign – grant processed

9. Bretforton Community Shop want some paint to decorate their shop floors - grant processed

Pebworth Rural Cinema The next Pebworth Rural Cinema is on Friday 28th April. The showings will be in the village hall, and doors open at 7pm with food and drinks available. The tickets cost £5 per person. More details on the Rural Cinema on the village website [www.pebworth.org](http://www.pebworth.org).

Your District & County Councillor, Alastair Adams can be contacted on [adams.pebworth@gmail.com](mailto:adams.pebworth@gmail.com) or mobile 07725 979 277

## **LADIES!**

**Walking Keeps You Fit.**

**Join our walking group and make new friends.**

**We do a two-mile walk on Monday, Wednesday and Friday mornings.**

**For more information call Ann on 01386 830517**

**We look forward to seeing you.**

# SportHoneybourne

[www.sporthoneybourne.org.uk](http://www.sporthoneybourne.org.uk) is the website where you can quickly find your favourite sports and exercises.

Local clubs and classes are all listed, so you have direct access to view their activities. Also, the latest national news feeds are available here for most popular sports.

**Is your particular interest Running?**

**If so, enter the website and select “Other”, and then select “Running”.**

**Or is it Caving?**

**If so, enter the website and select “Other”, and then select “Caving”**

Anything missing?

What will you do today?

Maybe set a Personal Best (PB), however short or slow. We can all do just a little more to improve our health and fitness.

Need help or support? Contact Steve who will be only too pleased to help in any way.

[www.sporthoneybourne.org.uk](http://www.sporthoneybourne.org.uk)

## HONEYBOURNE PLAY-READING GROUP



Honeybourne Play-Reading Group's spring season continues this month with their meeting on **Thursday, 20<sup>th</sup> March at 7:30pm** (reading yet to be confirmed).

We are currently at full membership but not every member can make each reading, so there is still plenty of opportunity to get involved. Don't be shy! We aim to keep our play-readings as light-hearted and entertaining as possible and offer a welcome drink and nibbles on arrival.

**The group is open to all villagers and their friends from the surrounding area. They meet on the third Thursday of each month in Stephenson Way. Membership is free and all reading material is provided.**

For further details, please contact Nicola Hogan

Mobile: 0785 191 3435 / Email: [honeybourneplayreadinggroup@gmail.com](mailto:honeybourneplayreadinggroup@gmail.com)

live  
happy!  
with  
Slimming World



**Honeybourne Village Hall  
Every Thursday 7pm**

**Lose weight without going hungry  
Still enjoy your favourite meals**

**Want to know more call Julie  
075115 18445**

**Or just pop along - a warm welcome  
awaits**

*visit the website for delicious recipes*  
**slimmingworld.co.uk**

**f t i 0344 897 8000**

*Slimming*  
WORLD

touching hearts, changing lives



## Local Lawncare Specialists

Now is the perfect time to get your lawn in shape for the summer

### Services include

- |   |                     |                      |   |
|---|---------------------|----------------------|---|
| □ | Moss & Weed Control | Scarification        | □ |
|   | Seasonal Treatments | Hollow-tine Aeration |   |
|   | Turfing             | Lawn Mowing          |   |

### Services also include

- Patio and Drive weed removal
- Hedge Trimming
- Tree and Shrub care
- General Garden Maintenance

□

Contact Raffe Wood today on  
07496 453667  
01386 324878

□





*the Fleece Inn*

The Cross, Bretforton, Nr. Evesham,  
Worcestershire WR11 7JE

Tel: 01386 831173

Email: [info@thefleeceinn.co.uk](mailto:info@thefleeceinn.co.uk)

[www.thefleeceinn.co.uk](http://www.thefleeceinn.co.uk)

# *April at the Fleece*

**Quilter and the Ghost - Sun 2 Apr, 8pm, £10**

Warm, nostalgic musical-theatre with lovely, emotive folk songs & well-crafted storytelling

**A Flavour of the Fleece: Taste & Tour Evening - Mon 3 Apr, 6pm, £20**

**Faustus - Fri 7 Apr, 8pm, £15**

the pioneering, 'bloke folk' triumvirate in a virtuosic display of musicianship & testosterone!

**Sing in the Spring! - Fri 7th Apr - Sun 9 Apr, £30**

A fabulous weekend of singing, workshops and Ale!

**Easter Sunday - Sunday 16th Apr, 12pm, Free Entry**

Pebworth Morris and Belle d'Vain visit the Fleece for their first dance out of the season

**British Asparagus Festival Launch & St Georges Day**

**Sun 23 Apr, from 11am, Free Entry**

---

Folk Nights – open to all, every Thurs. Celtic Folk Night - Third Wednesdays.

Fizzy Friday - Every Friday 12noon - 9pm

Take Away Fish & Chips - Treat yourself for just £5.95

Food served: Monday to Friday 12pm-2.30pm & 6.30pm-9pm

Saturday 12pm-3pm & 6pm-9pm. All day Sunday 12pm to 8.30pm

---

*Country Pub of the Year (Good Pub Guide 2016)*

*Visit England Tourism Pub of the Year 2016 Gold Winner*

For more events and our current menu see [www.thefleeceinn.co.uk](http://www.thefleeceinn.co.uk)

Phone: 01386 831173 Email: [info@thefleeceinn.co.uk](mailto:info@thefleeceinn.co.uk)





**Your local friendly garage**

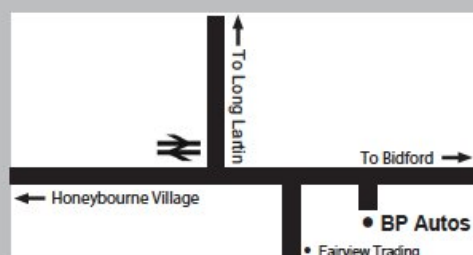
**For Servicing and Repairs to all Vehicle Makes  
Cars to Light Commercial Vehicles**

**Batteries • Tyres • Exhausts  
Wheel Balance • Wheel Alignment  
Diagnostics • Puncture Repairs  
And Much More!**

**Give us a call or drop in and see us.  
We are here to help you safely on your journey.**

**T: 01386 832157**

The Old Brickworks  
Buckle Street  
Honeybourne  
Evesham WR11 8QE



Opening hours

Mon to Fri: 8am - 6pm

Sat: 8am - 1pm

# Honeybourne Parish Council

List of Councillors 2015 - 2019

Name	Address	Telephone	
Graham Clelland	Lyndale, Station Road, Honeybourne, Evesham WR11 7QG	01386 832500	E
Andrew Attridge	Kaaga, Friday Street, Pebworth. Or The Ranch Caravan Park	01386 830744	E
David Cowan	10 Westbourne, Honeybourne, Evesham WR11 7PT	01386 831801	E
Colin Clear	23 Dudley Road Honeybourne WR11 7XR	01386 831804	E
Richard Chivers	The Old Vicarage Stratford Road Honeybourne WR11 7PP	01386 830 272	C
Stephen Sidwell	Wychwood, Station Road, Honeybourne, Worc's, WR11 7QG	07815311432	C
Sandra Walsh	The Elms, Buckle Street Honeybourne WR11 8QQ	07714 237 336	C
Heath Jobes	1, Clun Forest Way, Honeybourne WR11 7AP	07736 168736	C
Mathew Henson	4 Herdwick Drive Honeybourne WR11 7AN	07803 608 813	C

**Here are the details of the local police officers. The non-emergency number is 101 anywhere in the UK.**

**Police officer:** Julie DeParis - [julie.deparis@westmercia.pnn.police.uk](mailto:julie.deparis@westmercia.pnn.police.uk)

**Police Community Support Officer** - Pete Davey

[peter.davey@westmercia.pnn.police.uk](mailto:peter.davey@westmercia.pnn.police.uk)

Tel 0300 333 3000, Voicemail 01905 725763

**PSCO Bradley Sansom** - [bradley.sansom@westmercia.pnn.police.uk](mailto:bradley.sansom@westmercia.pnn.police.uk)

Tel 101, ext 3408

**Other useful contacts:**

**Village Hall Lettings Secretary**, for regular bookings call Rita on 01386 640696 or Sylvia on 832215 for one-off events

**Honeybourne Sport and Recreation Field** - John Stedman, Tel 01789 773 999

## Honeytots

### Parent and Toddler group

welcomes new people

Wed. 9.15-11.30am term time at Honeybourne First School Hall

£2 per family, snack included

We are aimed at toddler ages but babies are also welcome.

Find us on Facebook- Honeytots

Phone: Vicki Gear 07834 485794

# UNIFORMED ORGANISATIONS

## 1<sup>st</sup> Honeybourne & District Scout Group consists of:

### BEAVERS

Beavers meet on a Wednesday evening at Honeybourne First School from 6.00pm to 7.15pm, for boys & girls aged from 5yrs 9mths to 8 yrs

Contact: Sally Perkins 01386 833915

### CUBS

Cubs meet on a Wednesday evening at Honeybourne Village Hall from 6.30pm to 8.00pm for boys & girls aged from 7yrs 6 mths to 10 yrs 6 mths

Contact: Jayne Richmond on 01386 831515

### SCOUTS

Scouts meet on a Thursday evening at Pebworth Village Hall from 7.30pm to 9pm for boys & girls aged from 10 yrs to 14 yrs

Contact: Lynn Clements on 01386 833238 or 07950 791610

### SEA CADETS

Evesham Sea Cadets and Marine Detachment

meet Monday and Thursday evenings every week at 7.00pm until 9.30pm for young people aged between 10 years to 18 years.

For further information please email: [aoevesham@gmail.com](mailto:aoevesham@gmail.com) or ring us on a parade night on 01386 833383.

## Walking on Footpaths

Spring is just around the corner and we know that people look forward to walking their dogs and children in the countryside. Could I please remind everyone that when walking footpaths ALL dogs should be kept on a lead and under control at all times throughout the year. There may not be any sheep in the footpath field but chances are they are in the next door field and at this time of year they could be pregnant and are easily spooked leading to serious problems. Footpaths are a right of way and are for walking along and not for exercising dogs in.

## Honeyangels

Honeyangels meet every Tuesday at 10am in the church. We have a few songs, a story, a collection, a drink and cake while the children play with toys and mums or dads chat.

For more information contact Sylvia Matthews on 01386 832215

**H-BUG**  
**Cycle rides in Honeybourne**  
**Everyone is welcome**

Saturday 1st April                      Aspire to cycle 10 or 20 miles  
2.00pm at Badham Motors

Saturday 8th April                      Aspire to cycle 20 or 40 miles  
2.00pm at Badham Motors

Saturday 15th April                      Challenge Hills  
2.00pm at the Village Hall

Saturday 6th May                      Aspire to cycle 10 or 20 miles  
2.00pm at Badham Motors

**SHORT MAT BOWLS**

If you enjoy watching, and perhaps marvelled at the skill of the professionals performing on T.V. why not come along to the Village Hall on Friday evenings (7.30) and have a go yourselves at a somewhat simpler version called Short Mat Bowls.

All equipment is provided the only thing we ask that you wear flat shoes. Trainers etc. are ideal. The cost is £2 per session.

Please note that everyone within the village of Honeybourne should receive the Honeybourne Village News on the last weekend of the month. The magazine is available TO PURCHASE from the village shop: Please do not just take a copy as it costs both the shop and the magazine itself money. They cost 50p and taking without paying is stealing.

## **BADHAM MOTORS**

Stratford Rd. Honeybourne Evesham.

**Tel: 830307**

**After Hours 831514**

**MOTOR ENGINEERS WHO CARE  
ALL TYPE OF VEHICLE REPAIR  
SERVICING/M.O.T.**

**CLASS 3.4.7.**

**QUALITY USED CARS ALWAYS**

## **COMPLEMENTARY THERAPIES**

**Emily Parr & Di Richardson**

- Reflexology
- Reflexology for fertility and pregnancy
- Sports massage
- Remedial massage
- Indian Head massage
- Aromatherapy



Available at **Evesham Natural Health Centre**, 98 High Street  
Please call **01386 421 821** to make an appointment

## **FILL THE FRAME**

**All your picture framing needs.**

Specialist in framing sport, film, TV and music photos and memorabilia. Wedding collages made to order.

**Phil Rainey**

**45, School St, Honeybourne**

**Tel. 01386 833505**

**07969 620555**

## ADVANCED BOOKING CARS

**A** ABC Private Hire of Honeybourne **A**

**B** Call Thomas on **B**

**C** 07752 640352 / 01386 834028 **C**

**www.abcprivatehire.co.uk**

Any Destination, Any Time or Day Hire  
Airport, Rail, Coach & Sea Port Connections  
Meet and Greet Service



For all your craft and  
sewing needs  
No job too big or too  
small!

Ring Shirley on 07957 620237  
or email [craftandsew4u@yahoo.co.uk](mailto:craftandsew4u@yahoo.co.uk)

[craftandsew4u.co.uk](http://craftandsew4u.co.uk)

### Evergreen Garden Maintenance

Mowing Hedge Cutting  
Tree Pruning, Turfing Etc:  
No job too small References available  
Garden Clearance Service

FOR A FREE QUOTE

Please Phone Tony

T: 01386 854797

M: 07752 613814



To advertise in the Honeybourne Village News or to  
contribute to the magazine, please contact Claire Poore  
at [magazine@honeybourne.org.uk](mailto:magazine@honeybourne.org.uk)  
or phone 01386 832800

### Need a Bookkeeper?

Then call

*Sally Clifford*

on **01386 834 239**

Cashbooks, Ledgers, Sage Work,  
Bank Reconciliations, VAT  
Returns.

# CLAREMONT CARS

## PRIVATE HIRE SERVICE

From Bidford & Honeybourne

We offer a professional door to door service by appointment  
24 hours a day, 7 days a week.

Serving South Warwickshire, the North Cotswolds and the Vale of Evesham,  
we cover all locations, both locally and throughout the U.K.

Estate Cars and people carriers up to 8 seats are available.  
We specialise in meet-and-greet facilities at all major UK Airports.  
Sample discounted rates (at 1st January 2016) including up to four  
passengers (supplement applies for people carrier):

### BIDFORD OR HONEYBOURNE to

	From		From
Birmingham	£60	Bristol Airport	£100
Heathrow	£125	Luton Airport	£130
Gatwick	£150	Stansted	£150
Manchester	£140	Southampton	£140

Please enquire for rates from your local area or for any other destination.

FOR THE BEST IN PRIVATE ~HIRE

CALL NOW ON:

**01386 833660**

Philip Hickson – 53 Stratford Rd, Honeybourne,  
Evesham. WR11 7PP

E-mail: [info@claremontcars.co.uk](mailto:info@claremontcars.co.uk)

Website: [www.claremontcars.co.uk](http://www.claremontcars.co.uk)