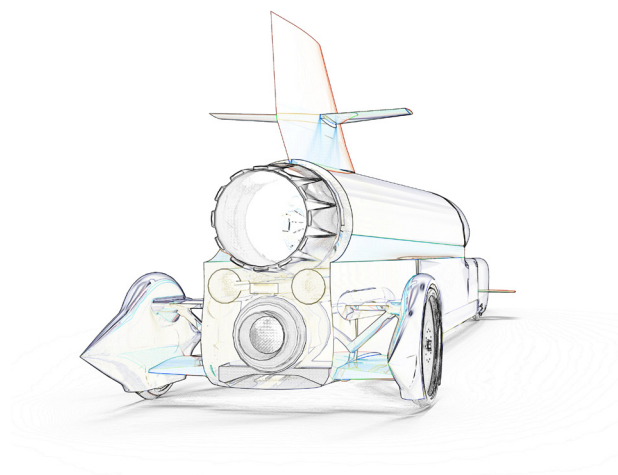


FeatureCAM 2015 R2

Feature-based CAM software for mills, multi-tasking lathes and wire EDM

www.featurecam.com



FeatureCAM 2015 R2

- CAM for Machine tools, the easy way!

FeatureCAM 2015 R2 provides a wide variety of improved functions, including a major new Addin, enhancements to automatic tool selection and solid modelling developments. A new Vortex approach method, as well as the 2, 3 and 5 axis output option modifications, create our best release of FeatureCAM to date.

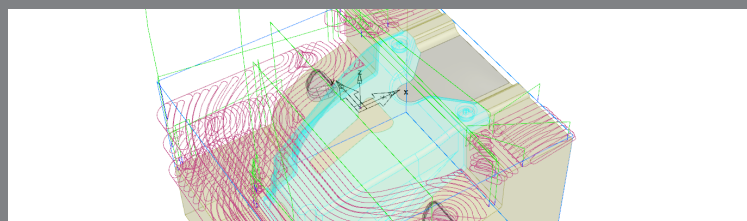
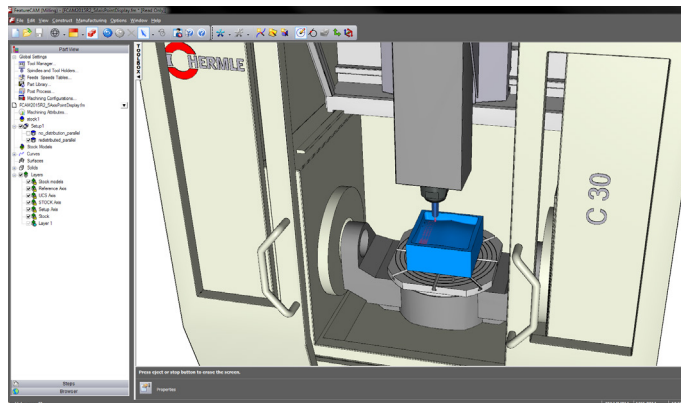
DID YOU
KNOW



Feature-based CAM is up to 5 times faster than conventional programming.

New features and enhancements include:

- New Flat Approach for Vortex
- Multi Tool Block Definitions
- Output for NT and Vortex Toolpaths
- 3 and 5 Axis Toolpath Point Display
- Vortex Milling Calculator Addin
- Drilling Pecking Depth Per Tool
- Automatic Tool Selection Attributes
- Combining Multiple Solids

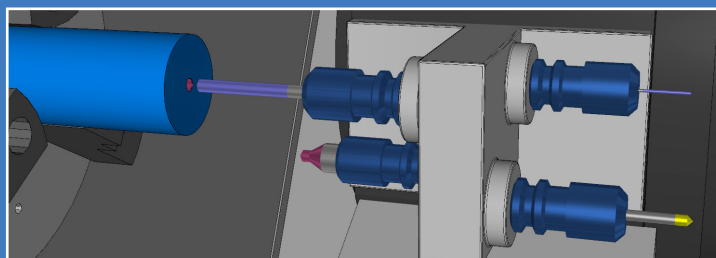


New Flat Approach for Vortex

Vortex toolpaths are now more efficient, when machining flat areas, as they allow an approach from outside the stock. Flat sections are now extended, until they reach a pre-machined area, removing the need for helical entry moves.

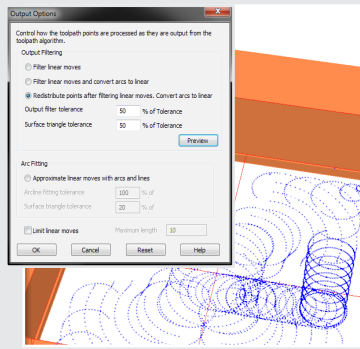
Multi Tool Block Definitions

Multi Tool blocks can now be created within Machine Design files. These tool blocks now have a list of tool locations, with attributes describing the type of tool to be held in each location, and can now be selected within the tool mapping window.



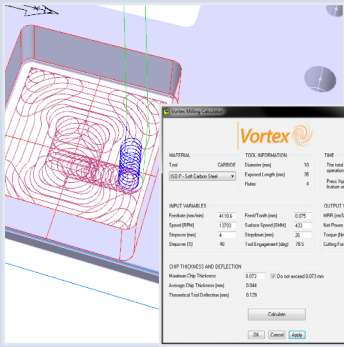
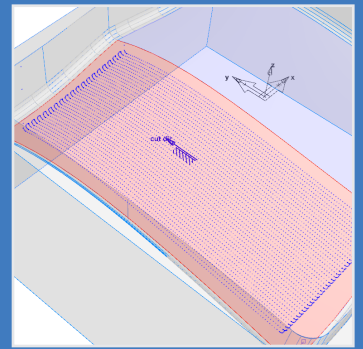
Output for NT and Vortex Toolpaths

Output options are now available in 2 Axis NT and Vortex toolpaths. Control over point filtering and arc fitting, essential for smooth machine motion, can now be set in the feature, with the distribution of toolpath points now displayable.



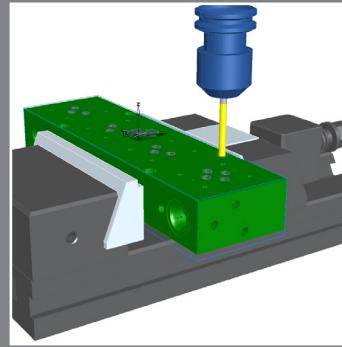
3 and 5 Axis Toolpath Point Display

Toolpath points can now be displayed via the output options dialog box. A new preview function allows the user to view the toolpath points to verify the desired output, helping to maximise the machine controller compatibility.



Vortex Milling Calculator Addin

Maximise your productivity and efficiency when machining with Vortex. This Addin interpolates tooling catalogue parameters, using maximum chip thickness control to reduce toolpath time, whilst maintaining the cutting load.

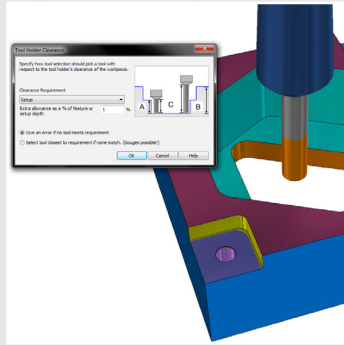


Drilling Pecking Depth Per Tool

The allocation of specific drill pecking depths on a per tool basis now streamlines FeatureCAM's workflow. There is now no longer the need to update global pecking defaults after feature creation, significantly reducing the programming time for drilling.

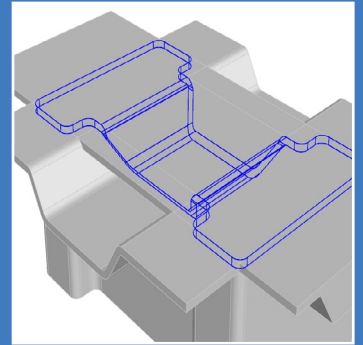
Automatic Tool Selection Attributes

Exposed length checking of the tool improves automatic tool selection, by allowing tools to be verified against feature depth or setup depth, to avoid potential collisions.



Combining Multiple Solids

Solid modelling is even quicker thanks to improvements in the Solid Combine function. Multiple solid models can now be combined at once as either Unions or Intersections.



FeatureCAM has really cut programming times in half. It's helped us to get our products out more quickly.

Steve King, Virginia Panel Corp

DID YOU KNOW



You can change the machine tool at any time, and FeatureCAM will re-create all the G-code automatically.

Unlock the power of Delcam software



LEARNING ZONE

Visit www.delcam.tv/lz and see how Delcam software could benefit your business!

