

LE NOZZE DI FIGARO

THE MARRIAGE OF FIGARO

2017

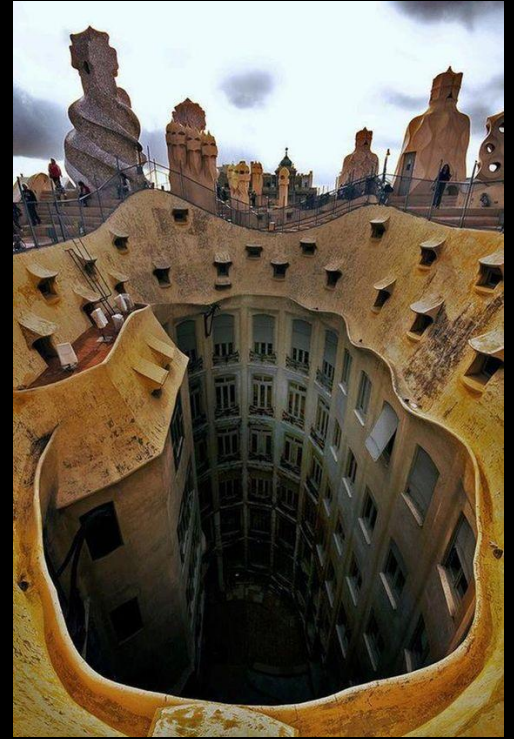
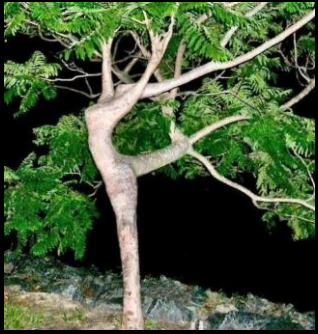
The image shows a stage set for the opera 'Le Nozze di Figaro'. The set is dominated by a central, large, stylized tree sculpture that is illuminated with a bright blue light. This central tree has a complex, almost abstract structure with many branches. Surrounding it are several other trees, also illuminated with blue light, but they are more slender and have simpler, more naturalistic forms. The background is dark, making the blue-lit trees stand out. The overall atmosphere is dramatic and artistic.

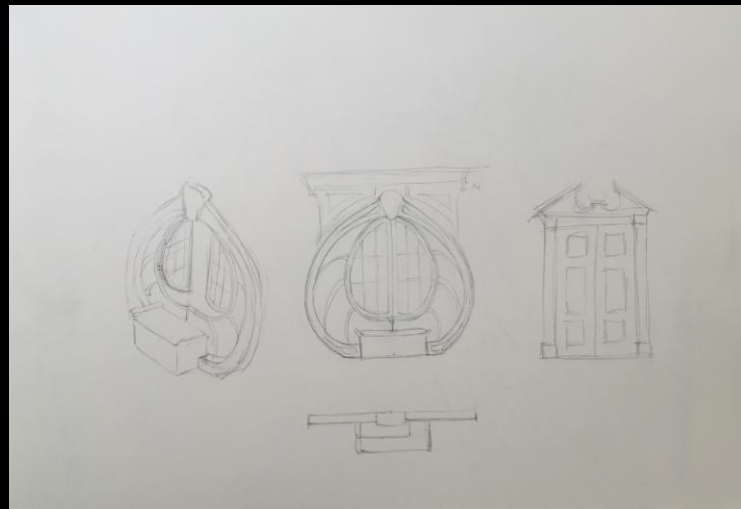
DESIGN
PROCESS



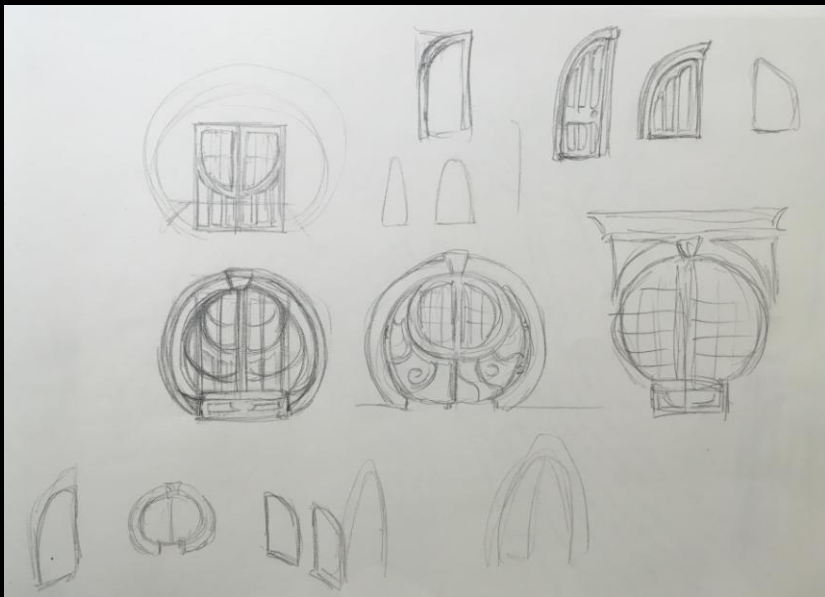
INSPIRATION







INITIAL MODEL & SKETCHES





DEVELOPING MODEL





WHITE CARD MODEL





PAINING THE MODEL





FINAL MODEL



COSTUME DESIGNS

Figaro



Susanna



Count



Countess



Cherubino



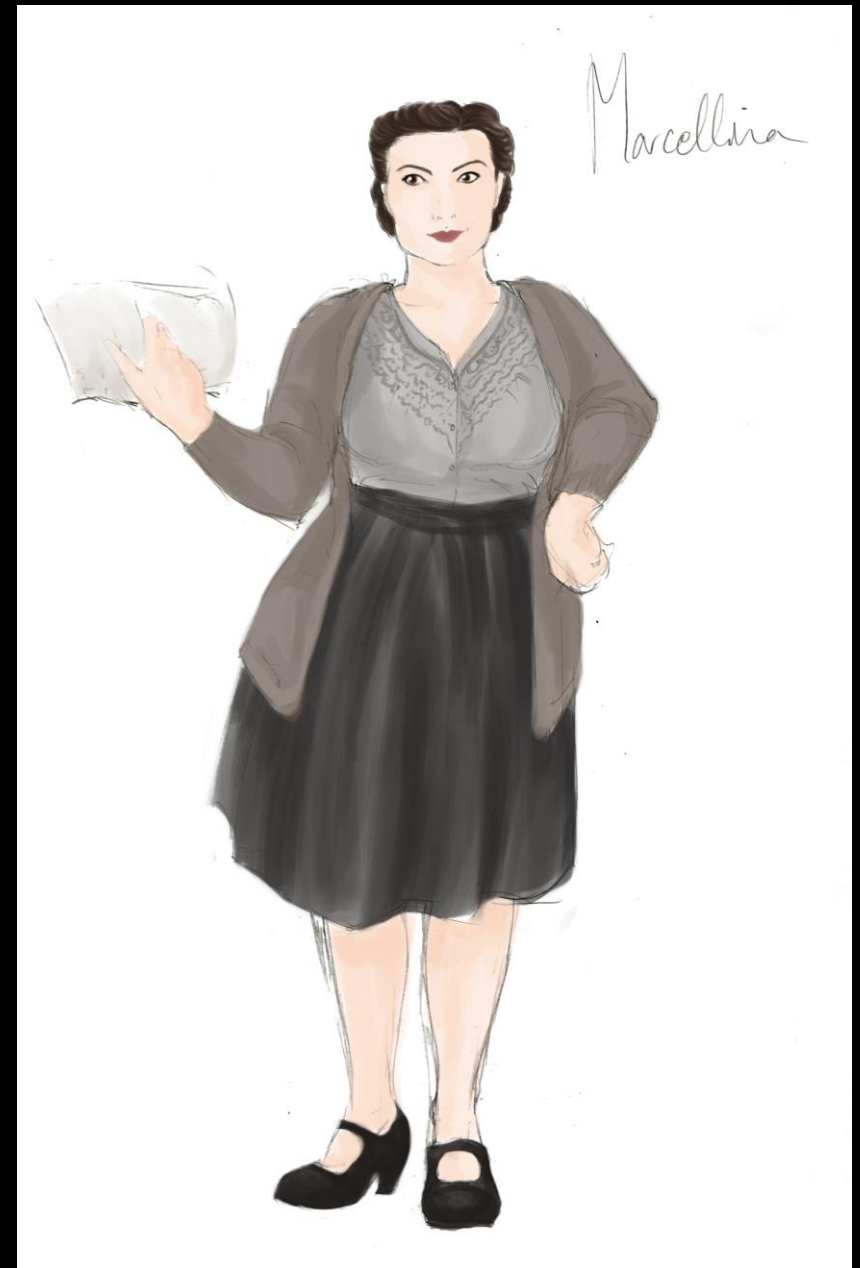
Barbarina



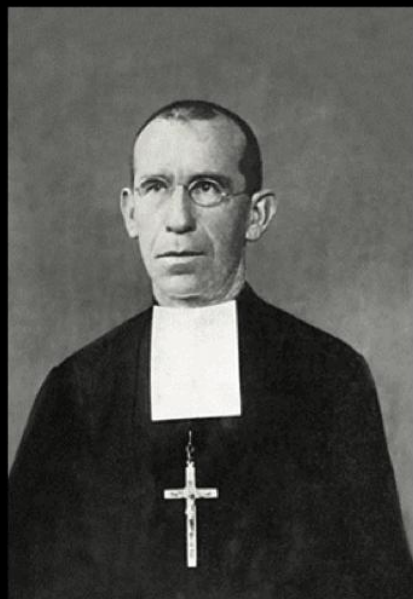
Bartolo



Marcellina



Basilio



Curzio



Antonio





SET IN PROGRESS





REALISED DESIGN





















