



THE
ULTIMATE
CRUSHING
SOLUTION

Mobile Jaw Crusher

TJ-2440



TJ-2440

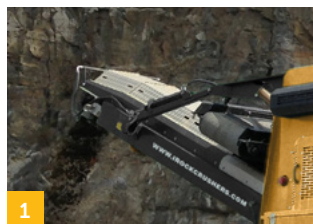
Mobile Jaw Crusher

CRUSHER



The TJ-2440 Jaw Crusher continues IROCK's focus on quality, durability, and productivity. With heavy duty cheekplate design, a 40" wide jaw and user-friendly control panel which has excellent machine diagnostics, the TJ-2440 provides contractors with a highly portable option while meeting all production expectations. At 8.2' wide, it's ideal for applications that require a high degree of mobility. Maximum productivity is delivered through the enhancements to the deeper jaw box, including a faster jaw speed and a larger gap between the crusher discharge and main conveyor feedboot. The TJ-2440 retains the core values expected in a full size IROCK Jaw Crusher, including high capacity production and heavy duty build, packaged for efficiency and mobility.

Engine	CAT® C7.1 225 HP
Transport Height	10 feet 6 inches (3.20 m)
Transport Length	45 feet 2.6 inches (13.78 m)
Transport Width	8 feet 2.5 inches (2.50 m)
Weight-w/ magnet & side conveyor	76,280 lb (34,600 kg)
Crushing Chamber	40 inches (wide) x 24 feet (pitman opening)
Stockpile Height - Main Conveyor	11 feet 4.2 inches (3.47 m)
Stockpile Height - Side Conveyor	8 feet 2 inches (2.50 m)



1 36" main conveyor as standard, giving large stockpile capacity. Conveyor lowers and raises hydraulically.



2 True 40" x 24" jaw with reversible hydrostatic drive, reversible jaw plates, and fully hydraulic closed side setting (CSS) adjust.



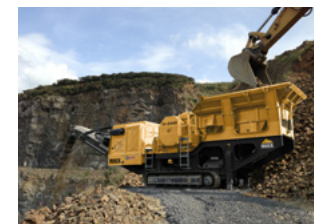
3 Optional overband magnet enables magnetic material separation from the source material.



4 Folding HARDOX® hopper mounted over vibrating pan feeder built with steeper angles to reduce material sticking. Feeder rate regulated manually or automatically by load sensing jaw.



User friendly waterproof and dustproof control panel. Allows monitoring of pressures, fluid levels and fuel consumption. Provides push button control of jaw, track and feeder functions.



At only 8.2' wide, the TJ-2440 is easily transported between job sites.