

# DC IT-Safe Modular Compact Data Centres

PROTECTING YOUR NETWORK FROM ALL PHYSICAL HAZARDS



## Keeping your IT Safe

The new DC IT-Safe, available exclusively from iDaC Solutions in the UK and Ireland, is a convenient way to protect your network IT equipment and critical business data. It guards against physical hazards (as found in some manufacturing facilities), theft, vandalism and natural forces, such as floods and fire.

Whether you are looking for a secure in-house alternative to a data centre or a back-up system for disaster recovery, the DC IT-Safe can be configured to suit your particular needs.



- **IT-security? Life insurance for your IT and data structures!**

If you want to keep your information in-house, rather than store sensitive company (or client) data on external servers, the DC-ITSafe (with access control systems) is the ideal solution; as it is certified for burglar protection RC2 according to EN1627.

- **Your company is still growing? The DC-ITSafe can grow with your requirements!**

Modular, expandable, removable construction offers full flexibility.

- **Haven't got space for a dedicated Comms room? The DC IT-Safe is the perfect fit!**

A rack depth of 1200 mm, double-wing doors and twelve additional vertical height units (up to 62U) are standard features— in less than 2 m<sup>2</sup>.

- **Danger of over-heating? The DC-ITSafe always keeps cool!**

Our energy-efficient, industrial standard cooling units are specially designed for permanent operation; and are self-regulating so adjust according to the heat generated by your servers.

- **Proven quality? Verified by experts!**

External quality controls\* ensure the uniform quality of the DC-ITSafe, and the integrity of our IT security solutions.

- **Worried about other hazards? We perform in any situation!**

The DC-ITSafe was successfully fire tested to EN1363, EI 90 - freestanding and with fire on all sides and top - and is the first mini data centre in the World tested as a complete system. It is also certified to EN 60529 for IP56 dust & water protection, as well as EN1634-3 smoke / gas seal tightness.

## Key Features

- Compact, modular, high-availability data centre with \*TÜV Level 3 Plus
- TÜV-certified against fire, burglary, water, dust, fumes, debris, EMC & explosion
- Fully Redundant cooling solutions with energy-efficient inverter technology (other options available)
- 19" early fire detection and extinguishing (optional fitting)
- Redundant power supply (AB) - UPS (optional fitting)
- Monitoring & energy efficiency systems (optional fitting)
- Plug & Play compact data center from a single source
- Patented, internal click-assembly technology
- Self-locking, automatic multi-point lock with large hook bolts and sealing element
- Automatic multi-point locking with VdS class B certification
- Fast availability of Standard products

\*TÜV Rheinland AG is a global independent provider of technical, safety, and **certification** services.

Independently certified  
by TÜV\*



VdS certified locks guarantee  
added security

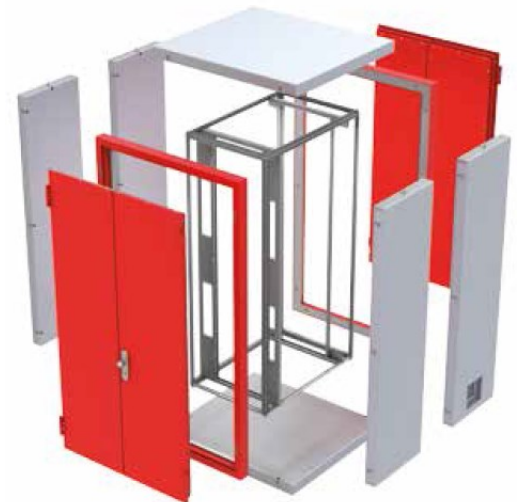


Expandable via linking modules  
with click assembly



## Construction Features - Modular, Robust, Secure

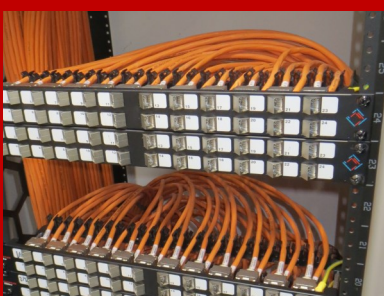
- Sheet steel cassette construction
- Finish: Corpus aluminium white
- (RAL 9006), doors traffic red (RAL 3020) (different colours available upon request)
- (Re-)movable, expandable by linking modules
- Patented "click" assembly method for quick and easy installation
- Self-locking, multiple automatic locking by massive swing fasteners and tightness elements for increased protection against unauthorized access
- Key lock and/or pin-code-terminal
- Weight empty: 1,100 kg
- Max. capacity 19": 1,000 kg
- Outer dimensions:
  - W 1452 x H 2185 (56HU) x D 1470 mm
  - W 1452 x H 2425 (62HU) x D 1470 mm
  - (different sizes available upon request)
- 19" profile frames,
  - dimensions 800 x 1,200 mm
  - 44U horizontal + 12U vertical = 56 U
  - 50U horizontal + 12 U vertical = 62 U
- Double-wing doors for reduced space Requirements
- 4 ea. soft ducts, hard ducts available upon request, DN 200 for side walls (different options available)



## Ideal solution for:

- Small and medium-sized companies
- Companies with decentralized structures (logistics and industrial companies with different locations, retailer)
- Medical facilities like larger GP practices, hospitals and care homes
- Accountants, legal firms, engineering offices, marketing agencies, etc.
- Schools, colleges and universities

We also supply Datwyler's high performance copper and fibre cabling solutions. Contact us for details.



Contact us today for more information or to request our DC IT-Safe design checklist