

The Villager

The community magazine for the parishes of Martley and Wichenford

Volume 13 No. 8

January 2004

Editor: Michelle Higgins (01886 888344)
Editorial Team: *Martley:* Alan Boon (01886 888527, Nellie Bradley (01886 888339), Kate King (01886 888439), Beth Williams (01886 888273) *Wichenford:* Janet Andrews (01886 888303), Sheila Richards (01886 888378)
Advertising: Neil Stammers (01886 888513)
Distribution: *Martley* George & June Lawrence (01886 821064) *Wichenford* Bill & Jo Root (01886 888585)

Contact The Villager: leave articles at Martley Post Office or 1 Oxford View Wichenford or email the Editor at msh_47@yahoo.co.uk

Opinions expressed by contributors are not necessarily those of The Villager. The Villager cannot be held responsible for any goods or services advertised in the magazine

Diary

Regular events:

Teme Valley Shufflers Line Dancing

Weds 7pm Martley Memorial Hall.

Enquiries: Jeff and Thelma 01886 821772

Citizens Advice Bureau Teme Valley

Telephone Service Mon & Tue 10am—3pm

Thu 10am—7.30pm 01584 810860

Great Witley & Knightwick Surgeries Weds

10am -4pm - by appt. Tel. 01584 810860

Short mat Bowling Tuesdays 2.30pm Martley Memorial Hall

Weight Watchers Tue 6.30pm

Martley Memorial Hall

Enquiries Tracey Hopkins 07710 493 617

For Church services, please see Church page

Thu 1 **NEW YEAR'S DAY**

Mon 5 **Kenswick and Wichenford Parish Council Meeting** 7.45pm
Wichenford Memorial Hall
Martley Parish Council Meeting
8pm Memorial Hall
Royal British Legion meeting:
8pm The Talbot, Knightwick

Sun 11 **Teme Valley Farmers Market for local produce** 11am The Talbot, Knightwick
Martley Ramblers around Martley Meet 2pm Church car park

Wed 14 **Martley WI: Desi talks about her travels in Manu National Park** 7.30pm Martley Memorial Hall
Wichenford Local Heritage Group: Maritime History 7.30pm Memorial Hall

Thu 15 **Wichenford Wine Club:** A Taste of Tuscany 8pm Wichenford Memorial Hall

Tue 20 **Wichenford Ladies' Fellowship** 2pm at the home of Jo Root

Mon 26 **Wichenford Church Council Meeting** 7.45pm Memorial Hall

Thu 29 **Martley & District Horticultural Society:** Climbers, Ramblers and Scramblers by Maurice Bracher 7.30pm Martley Memorial Hall

Fri 30 **Royal British Legion:** Fred Seiker on The True Story of the Bridge over the River Kwai 7pm Broadwas Village Hall

Articles to go in The Villager must be with the Editor by the 1st of the previous month

OUT AND ABOUT I N MARTLEY

Visit our website—www.martley.org.uk

Martley Parish Council

Meeting held on Monday 3 November 2003 at the Memorial Hall

Matters Arising

It was agreed that the Emergency Meeting Procedure as presented to the Parish Council in July be accepted.

It was agreed that the Lengthman's mileage allowance be increased to 35 miles per month from 1 November to 31 March, when it would be reviewed.

FP 88: the Clerk reported that agreement had been reached with The Path-or-Nones that £200 of their £750 precept would be retained by WCC to go towards the cost of re-siting the metal barriers. The work will start during the second week in November.

Ownership of the plantation adjacent to the weighbridge: The Clerk reported that he had spoken with Mrs. Williams from Martley Court.

Sweeping recently-surfaced roads: The Clerk reported that he had written to Highways and had received a reply. Mr. M. Nott confirmed the roads had been swept and most of the remaining signs removed. Prickley Green Road, cracks: The Clerk reported that he had written to Highways and a reply received to the confirm an inspection will take place.

The Chairman declared that he and the Clerk had attended a CALC meeting at County Hall; a report was given and

reference made to an address given by the Police

Parish Matters

No items were raised..

County Councillor's Report

Mr. A. Davies reported a large increase in police officers for this county. Tenbury Well is being developed as a policing centre.

Bell Lane Broadheath will be closed for nine weeks in December due to works by Severn Trent.

A review of the WCC budget is due on 17 November. The County Council will pass on all of the increase in the education funding to the schools.

District Councillor's Report

Mrs. B. Williams had sent her apologies therefore no report was given.

Parish Footpath Officer's Report

Mr. Nicklin reported that a new stile had been installed on FP 55 at "The Nubbins" and a bridge cleared at "The Moors". He was granted permission from Mr. M. Nott to enter his land with a vehicle and trailer so that the footbridge on FP 59 could be replaced. All the published walks produced by Mrs. A. Trumper and her late husband Keith are now available on the Path-or-Nones web site which can be accessed via www.martley.org.uk. Mr. Nicklin requested that Shanks (owners of the tip off Pudford Lane) be

contacted ref. the condition of the footpaths on their land.

Planning

Applications: a. Laugherne Park: A copy letter from MH Highways Partnership ref. requesting the removal of the large sign and materials on the highway verge; Millennium Green notice board; Quarry Farm Quarry Lane Hillside; High House Ankerdine Hill; Treetops Bungalow Hillside. Granted: The Barton Berrow Green; Poolfield Cottage Wants Green; Gooniwindi Berrow Green.

Finance

There were three cheques totalling £7,720.74 for agreement and signature.

Correspondence

Included: Record Playground Equipment. Ltd. Invitation to play seminar 25 November; NALC Policy update no. P27/03 Draft Planning Policy- Sustainable Devel. In rural areas; FWAG Hedgerows—Workshop to look at planting, restoration and laying techniques; WCC Gritting routes; Bus Bulletin

Councillors Reports and Future Agenda Items

Various sites in Martley for affordable housing are under review by MHDC.

The Clerk reminded the meeting that his term of office ends at the end of December.

The next meeting is on Monday 1 December 2003.

*Tom Pearsall
Clerk to the Council 01886 888256*

Welcome

A warm welcome is extended to the several new residents who have come to live on our lovely Hillside. We wish them a very happy time here.

Local Lad in Iraq

L/bdr Billy Burton, son of Eve and Bill Burton, of Hollins Lane, Martley, was in Cyprus for Christmas 2002. Now he is in Iraq. Billy was in Germany in October then flew out to Iraq in November.

*Carrie-Ann Hope (Billy's niece)
(The Villager would like to send Billy and his family, and all local families who are apart during this festive season, best wishes for the New Year and hope for a happy and early reunion— Editor.)*

Scanner Appeal

A further £460.00 was added to the Martley scanner fund thanks to a very successful Bingo night organized by MHDC Councillor Sue Gill and held in Holt Village Hall. Our thanks go to her as they do to all those who helped her, gave prizes and, of course, those who came and played.

BW

Martley Ramblers

At the recent AGM, all the officers were re-elected. Last year there were 11 walks covering 59 miles, averaging 5.5 miles per walk. Yet again, March

had the biggest turnout. Members voted on the most interesting walk, not an easy decision. Pauline and Ray Ellis were the winners and allowed to take Mabel home to stay with them for the next twelve months. The format of second Sunday in the month will continue except for 18 April to avoid Easter Sunday and 7 November to avoid Remembrance Sunday.

We start 2004 with a local walk on 11 January led by Judith O'Leary at 2pm in the Church car park.



Martley WI

Wednesday 14 January 7.30pm

Another new year and here we are looking forward to an interesting programme of talks and demonstrations for 2004, trips, outings and whatever else we desire to do.

Pat Crook was re-elected President at the AGM and has a committee who will keep her organised. Or should that be the other way round? We hope Eileen Stammers will enjoy serving her first stint on the committee.

After Christmas celebrations we are thrilled to welcome back Desi Green, a friend to all of us. She will be telling us of her visit to Manu National Park. The competition is for the best holiday photo.

Kate King

Martley Spurs

November started off with a nasty loss when the Saturday side lost 3 - 7 to Perrywood; but the next day the Reserves did themselves proud in their Worcester Nursing Minor Cup match against Anchor Falcons, netting five goals to three after extra time, Tom Birchley getting a pair. However, the same side lost the following Sunday, as did the Premier eleven when playing Droitwich Spa.

The Saturday Premier side had few fixtures during the month since various sides in their division were engaged in cup games as well as having one match postponed.

The Reserves beat Worcester Juniors on the 16th. On the 23rd, the Sunday Premier eleven played away to Pinvin United and won 3 - 0 while the Reserves, at home to Anchor Falcons in the Bernard Finnegan Cup, won 3 - 2 with Tom Birchley notching up another pair.

The last weekend of the month saw the Saturday Premier side draw three all with Worcester City while their Sunday equivalents lose 2 - 0 to Archdales.

Beth Williams

Martley & District Horticultural Society

The President of the Society, Richard Webb, welcomed members to the Annual General Meeting. The Chairman, Barbara Kirby, gave a

comprehensive report on the year's events. She thanked everyone for their continued support, especially for the Spring Show, the Plant Sale and the Annual Show. The Treasurer, Rena Davidson, presented a satisfactory financial statement for the year ending 30 September 2003. It was decided to donate £100 to Martley Village Hall and £50 to Martley Recreation Association. Subscriptions will remain at £2.50 for the coming year.

Officers for the new year are: President, Richard Webb; Vice-Presidents, Jack Bradley, Margaret Cole, Tony Kirby and Reg Snow; Chairman, Barbara Kirby; Vice-Chairman, Ray Ellis; Secretary, Judith O'Leary; Treasurer, Rena Davidson; Show Secretary, Sylvia Jeffries; Committee, Nellie Bradley, Irene Walker, Ian Pennell and all officers of the Society; Independent Examiner of Accounts, Reg Snow.

The Secretary presented the programme for 2004. The Society has a packed programme for 2004 including some spectacular events. Things start off on 29 January at 7.30.p.m. in Martley Village Hall with a presentation on Climbers, Ramblers and Scramblers by Maurice Bracher. Two local wildlife experts, Garth Lowe and Brian Draper are presenting evenings in February and April. There is a visit to the Tatton Park Flower Show during the summer as well as private visits to some outstanding local gardens. Meetings are held on the last Thursday in the month during winter

and spring months, 7.30pm in Martley Village Hall. During summer and autumn months members are 'out and about'. Details are given in each month in *The Villager*. New members most welcome.

Dates for your diary: Spring Show and Craft Stalls Saturday 27 March, Plant Sale Saturday 29 May and the Annual Show Saturday 21 August.

Nellie Bradley & Judy O'Leary

Pudford Lane

Greetings and best wishes for the New Year from all the inhabitants, feathered, furred or human. The fieldfares have demolished all the fallen apples, the holly berries and the spindleberries and the badgers are still foraging for the last of the fruit. Did some lucky wife or daughter receive a bicycle for Christmas? The one abandoned in the lay-by disappeared but still unopened sandwiches, Chinese takeaways and drinks cans appear regularly. Charlie Pheasant who has been seeking asylum in the orchard repaid us by flying into a lounge window. It sounded like a terrorist explosion. The ensuing Sunday lunch, although tasty, must have been our most expensive ever at £300 plus vat. At least there were no extra service charges. The double-glazing repair man, a keen fisherman, took most of the feathers. As the old adage goes, "Waste not, want not". Any offers for a sack of broken glass?

Kate King

Thanks!

Many thanks to everyone who attended the Christmas Bingo for Charlotte's Trust and for all the lovely prizes that were donated. We raised a fantastic £833. Thanks to everyone.

M Baldwin and family

Baby Congratulations!



Lionel and Pam Minchin are delighted to announce the safe arrival of Emily Lucy on Saturday 22 November, a

daughter for their daughter Sarah and John and a sister for Matthew.

All Change and Welcome

Guy and Maeve Mucklow have moved from Wichenford to The Old House, Horsham with Tom, Rory and Immy. Neil and Jayne Robbie have moved from Yorkshire to the Barn at Hill Top, Horsham.

Knightwick & District Trefoil Guild.

The November meeting was an open one. Heather Hill told us about how she first met Lady Baden Powell in the 1960's at an international Guide Rally at Eastnor Castle. Heather worked in Hong Kong for 16 years, teaching and promoting Guiding and running the first Kowloon Company. When she returned to England, she looked after

Lady Baden Powell at "Hampers", her name for her apartment at Hampton Court Palace. Heather brought along embroidery, photographs and a special china "haybox" to keep the teapot warm.

On 30 November a special service was held at Pershore Abbey to celebrate the Diamond Jubilee of the Trefoil Guild. About 300 people attended. The theme for the service was "belonging" and the service consisted of lively hymns and readings, followed by a "bun fight".

Our January meeting will be the A.G.M. at The Old Rectory.

Royal British Legion

The November meeting was well-attended, business discussed arrangements made for Remembrance Sunday Service and followed by the Annual General Meeting. We were represented at Group 9 and at County meetings and at the County AGM. We had welcomed the Martley members to the branch and thanked them for their support. Special thanks were expressed to Mike Peters, our Poppy Appeal Organiser, who was standing down this year. He has done an excellent job and offered his help and support to whoever takes on the post. The Officers elected for the coming year are: President, Arthur Kings; Chairman, Bert Fortey; Treasurer, John Kirk; Secretary, Joyce Tyler.

The next business meeting is Monday 5 January 2004 at 8pm at The Talbot

Hotel, Knightwick. The Chairman and members wish you a peaceful New Year and our thoughts and prayers are with our service men and women, wherever they may be.

*Joyce Tyler, Hon Secretary
(01886-821551)*

Martley Young (and bouncy) Farmers

Martley YFC 24-Hour Bounce-Athon raised approx £350. Members braved the freezing conditions on 21 November to raise money for Children In Need. They hired a bouncy castle and the idea was that there would be somebody on it all the time from 5pm on Friday evening to 5pm Saturday evening. This might sound like fun, but when it is cold and you are tired, I think the members would disagree!!



Many thanks to Mr Eric Firkins and Messrs Quarterman who kindly allowed us to use their shed at Great Witley and to all those who sponsored or donated money. Also, from the members, a very big thank you to those parents who provided hot food at various intervals - this was just what the bouncers needed!!!

Greta Sparey

Martley Millennium Green

The paths on the Millennium Green have remained in very good order

throughout 2003 thanks to regular mowing by Lionel Minchin.

A working party in November planted several hundred bluebells, wild daffodils and primroses, which should flower next Spring and gradually naturalise. At the time of writing, a flock of sheep is working hard to nibble down the grass to keep it neat over the winter before the start of the next growing season.

We hope that planning permission will shortly be granted for a notice board. One idea for the board is to post information on the various forms of wildlife, both flora and fauna, which can be seen on the Green at different points during the year. A Parish Picnic on the Green has been suggested. Any further developments of this idea will be publicised on the notice board and in the Villager.

*Ian Pennell, on behalf of the
management committee.*

An Orange Wireless?

January 2004 should see the completion of two more public services in Martley: a new mobile phone mast provided by Orange is expected to be installed this month. A Wireless Broadband system should also be available from the same site. Further details are available on your village website at www.martley.org.uk For a background to Wireless Broadband read 'A Vital Ingredient' on page 19.

John Layton



Over the Garden Wall in Wichenford

WICHENFORD NEEDS YOUR NEWS

Wichenford Ladies’ Fellowship



Janet Andrews
01886 888303
Sheila Richards
01886 888378

**Phone your Wichenford news to Janet or
Sheila or leave articles at Martley Post
Office or 1 Oxford View Wichenford**

At our November meeting, we welcomed Sue Hawkins, Service Manager and Transport, Loan and Medical Services, for the Worcester and Area Branch of the British Red Cross. Mrs Hawkins gave us details of Red Cross work overseas, which brings impartial relief to suffering all over the world and is now more relevant than ever since its inception during the Franco-Prussian War of 1870-71. She went on to explain the Red Cross work locally, such as providing equipment for the disabled, help with transport and a ‘re-uniting’ service. The Ladies Fellowship gave a donation to the Red Cross Society and generously supported the sale of Christmas cards brought along by Sue Hawkins. Mrs Janet Andrews thanked Mrs Hawkins for her enlightening talk.

Mrs Millie Pargeter conducted the prayers. We are very pleased to hear that Mrs Isabel Field is now home after her hip replacement operation. Mrs Pam Webb reported that the Fellowship Whist Drive held in November raised £124 towards the

church audio system. Mrs Molly Wall thanked all members for their support and generosity in organising this event, and those who had helped and given support in many ways. Members had also provided many items to fill charity shoe boxes for Christmas delivery, which Mrs Jane Wheeler had been responsible for organising and carrying out this project. Mrs Janet Andrews and Mrs Jo Root provided the refreshments for this meeting. Plans were discussed for the Fellowship Christmas Party in December. Before we departed Mrs Jane Wheeler asked us whose special birthday it was. “Mickey Mouse” she said, and produced a charming little fabric toy Mickey she has treasured for many years. It was a lovely way to end the meeting.

Diary Dates: 20 January, Wichenford Ladies Fellowship meet at the home of Mrs Jo Root, 2.30pm to discuss the

2004 programme. 26 January, Church Council Meeting, 7.45pm in the Memorial Hall.

Get Well

We send our very best wishes to Derek Grubb, Cliff Sanders and Heather Lee and wish them all a speedy recovery and a happy New Year.

Wichenford Memorial Hall

Recently, the Memorial Hall Committee has organised two enjoyable evenings to raise funds for the hall. Brian Draper gave a most entertaining talk on the River Severn, which was very much appreciated. A raffle was held and £209 raised. A Wine & Cheese Musical evening raised £179. The musical entertainment was provided by the Ladies Barber Shop Singers, which, with their able conductor, proved very popular. The Hall Committee would like to thank all those who kindly gave raffle prizes and those who provided food and, of course, all who came and supported these events. The series of Whist Drives are proving very popular. Our thanks to all those who help to organise them, and to Hazel Nicholls and her team for all their hard work.

Broadheath Discussion Club

There was a packed house for the Annual Goose Supper of the

Broadheath Discussion Club held at Sapey Golf Club last month. After a delicious meal the presentations were made to the successful members for the farm competitions. Our local farmers are to be congratulated. Eric Delahay winning cups for Winter Wheat and Grass, 2nd for Sheep and 3rd for Winter Barley. Trevor Pargeter won the Sugar Beet Cup and came 2nd for Beef and 2nd for Maize. John Richards was awarded the Maize Cup and came 2nd in Grass and 2nd in Dairy. Helen Pargeter in the Ladies Competition won the Cup for the best garden. Well done to all who took part and many congratulations to the winners.

Wichenford Church News

Altar Flowers

4 January Mrs P Webb
11 January Mrs S Richards
18 January Mrs S Richards
25 January Mrs J Andrews

Church Brasses

January, Mrs S Richards

Church Audio System

A very sincere thank you to everyone who has contributed time, talents and money either buying or selling produce, honey or indirectly through other organisations such as The Hundred Club, to our church this past year. We have been truly heartened by such support from you all. It has enabled us to start the proceedings to installing the audio system in church and at the same time has not affected

our usual income necessary to keep the church solvent. We are indeed most grateful to you all.

Pam Webb and Carma Wetherall on behalf of church members.

Wichenford 100 Club

November winner: No.62 Luca Kemp-Roberts. Luca is probably our youngest (18 months!) and most distant member as he lives in Muriwai, New Zealand. £111 will be soon winging its way across the globe.

Millennium Green Tidying and Inspection Rota

January: Jan Panton

Wichenford Local Heritage Group

Geophysical Survey – We are still waiting for the final report of the survey. However, the **initial results of the geophysical** survey are equivocal. There is a lot of ‘ferric’ (iron deposits) in the field which confused the magnetic detectors used for the survey.

Field Walk – We hope to organise a **field walk in the field** at Cockshoot Farm during Jan or Feb. If there was a Roman settlement there, there should be a lot of Roman finds.

Dig – **With the** support of the archaeologists, we are also trying to organise a small dig in the Cockshoot field later in January. We plan to open

a small trench in order to examine an area indicated by the crop mark. Anyone interested in helping should contact myself or Mary Hylan.

Maps – **We have** learned that the Worcester Record Office has now taken delivery of a new digital camera that permits them to take pictures of large documents. We hope to be able, therefore, to obtain an actual-size (about 6ft by 8 ft) copy of the tithe map. This is a spectacular, hand-drawn, hand-coloured map of the parish as it was in 1838. People have already expressed interest in obtaining a personal copy of a smaller size, for example A2 or even A1. If anyone is interested in purchasing a copy, would they please let me or Mary Hylan know. We do not yet know actual costs but it will not be very expensive as we are paying for the work involved in preparing the master copy with the grant from the Countryside Agency.

Spring Meetings – The autumn evening classes were well-attended and even attracted people from Hallow and Doddenham in addition to the Martley regulars. We plan to arrange another series of classes for next autumn.

Meetings have been arranged for Wednesday evenings during the Spring under the general theme of ‘Early Means of Industrial Transport’. All meetings will begin at 7.30pm. The details are as follows: 14 January Maritime History, especially the Severn Trow/Wich Barges of the Salt Trade; 11 February AGM; 10 March

Lost Local Canals; 14 April Lost Local Railways.

We hope that as many of you as possible will come along to the AGM so that we can have as enjoyable an evening as we did last year.

Mervyn Mitchard

Wichenford Wine Club

The Wine Club will meet, as usual, on the third Thursday of the month (15 January) at 8.00.p.m. in Wichenford Village Hall. There will be a presentation of A Taste of Tuscany by Paul Ceci from Worcester.

Judy O'Leary

Kenswick and Wichenford Parish Council

An Ordinary Meeting of the parish council was held on Monday 17 November 2003 at 7.30pm at the Memorial Hall Wichenford. One parishioner attended the meeting.

Reports

The meeting was opened by our beat officer P.C. Naulls. The last meeting he attended was April. Incidents in Wichenford are as follows:-

Stolen vehicle, Attempt Criminal Damage, Road traffic collision, Breach of the peace,

Criminal damage, and Bogus calls.

P C Naulls offered to talk to residents about crime prevention and obtain the video on rural safety for local parishes to view.

Our district and county councillor

were unable to attend the meeting.

Matters arising

Refuse Lorries. It seems that the letters written by the clerk have been a waste of time as the person she has been writing to has left and none of the letters have been passed on to his replacement. It was agreed the clerk send all existing correspondence on this matter to his successor.

Guises Lane/Rosses Lane. Although temporary notices have been placed at the ends of both of these lanes, 4x4's and off-road bikes have chosen to ignore them.

The parish council have written to the county council asking for a Traffic Regulation Order and for the wording on the signs to be altered. **When you are walking either of these lanes PLEASE keep to the footpaths and keep your dogs on a lead.**

Planning

The Parish Council discussed agreed to leave planning procedures unchanged. The pink notice placed outside each property is there for anyone to read, therefore it makes no sense for the parish council to approach individual households when they receive an application.

Decisions made by MHDC. The following applications have been passed: Replacement detached garage and house extensions for Birchcroft Ockeridge; free standing portal building for Ridgend Farm Wichenford; erection of timber stables on land at Cobblers Corner Broadwas; extension of residential curtilage,

demolition of double garage and replacement with triple garage, for Mallenders Cottage Wichenford. The following application has been refused: bungalow and associated parking, turning area at Meadow View Wichenford. Applications received for comment: manege for Bushy Ground Ockeridge. The Parish Council has no objection to this proposal. Amended plans for Allsetts Farm. The parish council are not in favour of these amended plans. Carport for use in connection with residential barn conversion at Allsetts Farm. The parish council has no objection to this proposal.

Finance

The clerk was authorised to pay the sum of £765.84.

Parish Council Co-option.

The parish council has received two applications from interested candidates. The successful candidate will be co-opted in January.

Highways

The footpath officer has written to the County Council for a Parish Paths start up grant. Kenswick and Wichenford Parish Pathfinders are looking for volunteers to help at weekends to maintain the parish footpaths. If anyone would like to help please contact J. Wells on 888459 or H. Rendall on 888239. The clerk will contact the highways department about collecting the rubbish from the village verges. The Parish Council are interested in the Parish Lengthsman Scheme but are worried about some

employment issues and asked the clerk to write to the highways department. Worcestershire County Council agreed to repair the potholes and road surface at Ridgend Farm and Cottage and to repaint the SLOW sign in the correct place. The two gullies that need attention will be done shortly. On Friday 12^{December} a Vehicle Activated sign will be in the village for the day.

Correspondence

Several complaints have been received regarding motorbikes using the field at the Masons Arms. The Parish Council has reported this to the letting agency.

Replacement Litter Bin

The new litter bin has been received and is waiting to be put into position.

Date and venue of next meetings

5 January 2004

16 February 2004

29 March 2004

10 May 2004. Annual Meeting of the Parish Council.

All in the Memorial Hall Wichenford.

*Shirley Sanders Clerk to the Council
(01886 888302)*

If you are intending to hold a fireworks party, please have respect for your neighbours and inform them prior to your party. There have been so many problems this year with animals, especially as fireworks are getting larger and louder. Don't forget we live in a rural community where we have horses, cattle and sheep.

A Vital Ingredient?

It is as well to reflect that just over 100 years ago the discovery of the electron would eventually lead to the start of radio broadcasting in the 1920's. This was followed by Television in the 1930's and to the development of Radar in the mid 30's, followed by the first programmable computer in 1943. It was to be nearly 40 years after that, as a result of the invention and development of the transistor, that the very first personal computer, an IBM, was produced.

In the history of mankind, the speed of change taking place in the western world has never been faster or had such a profound effect upon normal family life. Electronics have revolutionised virtually everything we touch or do in our daily lives. The introduction of the World Wide Web, for instance, has resulted in reliable, affordable and accurate communications between people everywhere becoming possible. Before the Internet was devised, the only methods of sending documents, pictures or diagrams over long distances, apart from a personal delivery system, was via the use of letters, telegrams, fax machines or radio. Some of these

methods are slow, and some, not as accurate as they should have been.

For many people and businesses, the use of computers made most of these conventional methods redundant and,

In the history of mankind, the speed of change taking place in the western world has never been faster

as new ideas were developed and where vast amounts of data were being sent over the internet, the

inherent speed and accuracy of delivery became ever more critical for economic success.

Though electronic mail is considered by many to be a cheaper alternative to conventional communications methods, it may yet prove to be more expensive. To enable ever-larger amounts of data to flow at high speed, the telephone companies in urban areas are introducing a system known as broadband - very similar in concept to a pipe, where greater quantities of water are able to flow as the size and

pressure is increased. Unfortunately, many telephone exchanges, especially those in rural areas, do not have the necessary equipment installed to enable broadband connections.



Another critical factor in the implementation of high-speed information flow is the distance between exchange and client. Although telephone lines are able to support conventional fax and voice communications over many miles, this is not the case with data. A good high-speed broadband connection is unlikely to be achieved by anyone living or working more than 3.5 miles or so from an exchange.

Various other options are available, however, including the use of satellites or wireless. One method, where trials are taking place at present, is via the domestic electricity supply cables. Called Power Line Telecommunications (PLT), it has great potential but has run into technical difficulties and though a great deal of money has been invested worldwide over the last ten years or so, most experiments have been discontinued. Another reliable method is to use satellites to carry the data, but this technology is expensive to install and ongoing operating costs make it unviable in most cases for private individuals and small businesses.

That leaves wireless broadband. Our government's policy objective is to make the UK the most extensive and competitive broadband market by 2005. The regional development agency, Advantage West Midlands, has



poured 13 million pounds into a project that will provide broadband access to 100% of businesses and 97% of households by the end of 2004 using technology that includes wireless broadband.

Latest information is that broadband will be arriving in Martley in January 2004.

We await this 'vital ingredient' with anticipation and baited breath!

John Layton G4AAL.

West Worcestershire Parliamentary Constituency

If you need help or advice with a local or national issue, contact your Member of Parliament - Sir Michael Spicer. Sir Michael represents all those who live in the West Worcestershire constituency, regardless of who they voted for at the general election. There are several ways to contact him:

Letter: House of Commons, London, SW1A 0AA

Telephone: 020 7219 3000

Website: www.sirmichaelspicer.net

Surgeries are held regularly. For details, contact the constituency office on 01684 573469 or call in at 209a Worcester Road, Malvern Link during office hours

A Brief History of Holiday Travel

It's that time of year again, the turkey has been well and truly stuffed, the weather's still damp and dreary, and the thoughts turn to the summer holidays. What to do this year? You have done ski-ing in Switzerland, the beach in Barbados and lazing in Lanzarote. What can I do different?

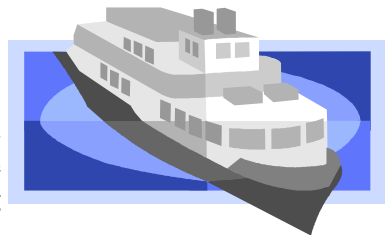
In 1835, Arthur Anderson also wanted to do something different, and proposed the idea of sailing for pleasure in an ocean going vessel. Within two years, his dream moved closer to reality when he co-founded the Peninsular Steam Navigation Company, later called P&O. His original article written with a dream in mind, suggested a programme of cruises that sailed between Scotland and Iceland in the summer, and as far afield as the Mediterranean in the winter.

Victorian Britain underwent radical changes and foreign travel became fashionable amongst the wealthy, created by the industrial revolution, even so, sailing for pleasure did not become really popular until the 20th Century. Victorian Britons travelling on ocean-going ships were more likely to be travelling to a destination within the global empire to work or live. The word POSH originates from this period. In the days before air-conditioning, Britons travelling on a vessel to India would favour a cabin on the shaded side of the ship away from the glare of the sun. So travelling from the UK to India, a North facing port cabin cost more than a South facing Starboard one. The opposite applied on the return journey. So only the richest booked Port Out Starboard Home. This became shortened to POSH!

During the first half of the 20th Century, opulent liners were built to serve the passengers between Europe and North America. Bigger, better ships were built and used to race for the Blue Riband trophy for the fastest crossing of the Atlantic.

The development of the jet engine and long haul aircraft saw a dramatic reduction in passenger numbers. By the 1970's the advent of the Jumbo jet saw an end to the golden period of transatlantic travel.

Since the 1970's, the cruise market has continued to prosper, but until recently was considered only for the wealthy. However, many companies, including Airtours, Thomson and P&O have brought the cruise market within the family budget, with cruise ships based in the Mediterranean offering cruises of seven nights duration, with flights



(Continued on page 22)

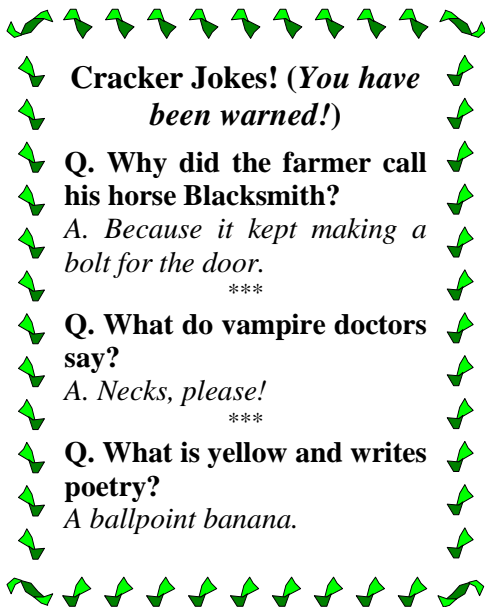
(Continued from page 21)

included, for the same as a week's holiday, half board, in one of the many ports used in these itineraries.

Childcare is now a key issue and entertainment goes beyond bridge parties and learning to dance. You can play golf, hire a mountain bike when in port, learn circus skills, jet ski or sample a host of differing activities. Of course, the luxury liners still exist and offer the opulence and service standards expected, the latest of which, the Queen Mary will come into service soon.

Ann Carter

(Ann has recently moved to Martley and is a travel agent working from home. She, offers an unbiased, personal, fully ABTA-bonded travel service. Contact Ann on 01886 889000 or email ann.carter@tarsc.net)



A New Year

The time has come to make those resolutions.

To change things or at least to find solutions

To promises we rarely seem to keep.
Yet every year we pile them in a heap.
Lose all those extra pounds of weight.
Drink less, ne'r have one o'er the eight.

But I'd rather make a list of things.

A list for a New Year which only brings

An end to wars and peace on Earth ,
Each and everyone his worth

And less cockeyed bans on normal life

To let us live with much less strife
To get what each one's heart desires
Not promises broken to make us liars.

Beth Williams

Royal British Legion present:

**Fred Seiker on *The True Story of the Bridge over the River Kwai*—
a video and talk**

**Fri. 30 Jan 7pm Broadwas
Village Hall**

**Tickets £6
from Joyce Tyler 01886 821551
or Thelma Taber 01885 483536**

Wine bar, biscuits

Resolutions - 2004

Every year since I was fourteen, I had the same New Years Resolution: to lose weight until I weighed 8 ½ stone—and that is a lot of years of New Years Resolutions! I never succeeded. Then five years ago I changed the pattern and the goal. This time I achieved my goal! I felt successful and this helped my self-esteem. What ever you want to achieve in 2004, try these tips.

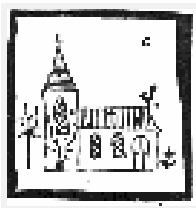
1. If you have failed to keep a new years resolution several years previously, don't resurrect the same one again. Either forget it or re-define it.
2. Make sure that your resolution is realistic and achievable. (8 ½ stone is far too light for me!)
3. Write down lots of things you would like to achieve in the whole year. List simple things and more stretching things. If you write things down you are far more likely to achieve them. Also, achieving the simpler tasks and ticking them off makes you feel successful and far more likely to achieve the harder tasks. My list included:
 - buying free range eggs rather than battery eggs
 - passing a friendly comment to a stranger each day
 - treating myself to flowers once a month
 - exercising three times a week
 - arrange a trip to New Zealand

The first three were relatively easy and could be ticked. The fourth one was harder but I achieved it. The final one I still haven't done - but I did do four out of the five which isn't bad!

4. Cross "Oughts" and "Shoulds" off your list. If you are not really committed, you will never achieve.
5. Have a think about what might stop you from achieving. Sometimes barriers can disappear by just being named.
6. Focus on what you *do* want, not on what you *don't* want. For instance, you are far more likely to achieve if you list that you want a new job rather than listing that you don't want the job you are in any more.
7. Visualize the benefits of your resolution. Imagine the scenario of you achieving the resolution in great detail. Get to know why the outcome is REALLY important to you.

Get support. Change is easier and more fun when you have somebody on your side so enlist the support of your partner, friends, family or life coach.
Good luck!

Jennie Barnes, Life Coach, 01886 884022



Church Words

The Rectory 01886 888664

Church services for January

And so another year rolls by! This year will be the year I will change this or that, this year I will do what I promised, this year so much is going to happen yet some of it will be completely out of our control, some good some bad.

Perhaps it's a year you want to put past failures, hurts and wrongs behind - a year of new starts, of forgiveness and healing. All these things are very much at the heart of the Gospel of Christ. He offers us new starts, he offers us forgiveness and healing. We see this in the Gospels and if Jesus I the same today as yesterday as he promised then we can receive these things today, this year.

Beginning 25 January 6.30pm at Martley, followed by other services throughout the benefice, we will be holding various types of healing services. Why not come along and discover what God has for you? I will also, as promised, be running another Alpha Course. If you are interested please let me know.

Whatever the new year holds in store for you, may you know that you are not alone, that there is one there for us always, as he promised, Jesus.

God Bless

Rev David Sherwin

4 January	
Wichenford	9.30am Holy Communion
Martley	11am Family Service
Broadwas	11am Matins
Knightwick	8am Holy Communion
Cotheridge	6.30pm Evensong
11 January	
Wichenford	10.0am Family Service
Martley	11am Holy Communion
Broadwas	11am Morning Worship
Cotheridge	8am Holy Communion
18 January	
Wichenford	4pm Evensong
Martley	8am Holy Communion; 11am Morning Worship
Broadwas	11am Holy Communion
Cotheridge	9am Matins
Knightwick	3pm Evening Worship
25 January	
Wichenford	11am Holy Communion
Martley	9.30am Holy Communion; 6.30pm Evening Worship
Broadwas	8am Holy Communion; 11am Family Worship

Baptism Anniversary Service

Please note the Family Service at Wichenford on 11 January will be a Baptism Anniversary Service, when we will be inviting anyone baptised in the Church to celebrate together followed by a party and buffet Lunch in the Memorial Hall. All welcome. It would help with catering if you could let us know if you are able to come, Rev David Sherwin 01886 888664.

Envelopes – green or blue?

Our local church, St Peter's Martley, needs a bit of help to keep the fabric up-to-date so that it always looks its best for weddings, baptisms, concerts and other events. It costs £500 a week to run the church and we get about £420 a week income – we could do with a bit more.

There is an easy way for everyone to contribute these days. Gift Aid enables the PCC to recover income tax from all monies received and you can choose to use direct debit, blue envelopes or green envelopes. If you would like to know more about how you can help, please contact Martin Curren on 01886-888300, or we might approach you early in the New Year.

*Catrine Ball and Brian Woodburn,
Churchwardens*

Lost Lippitts

If you left copies of birth and death certificates for the Editor of The Villager at the Post Office in Martley and would like them back, please contact the Editor on 01886 888344 to arrange for collection.

In the Kitchen



Corned Beef Hash

450g (1lb) corned beef
450g (1lb) cooked, cold potatoes
Milk for mixing
Salt and pepper
1 onion, finely chopped
Oil for frying

1. Roughly mash the potatoes and chop up the beef.
2. Fry the onion in a little oil.
3. Mix together the meat, potato, onion and seasoning. Moisten with a little milk.
4. Heat a little more oil in the frying pan and spread the mixture evenly over the bottom of the pan and cook it slowly over a gentle heat so that it does not burn. When the underneath is nicely browned (use a palette knife to check) turn the mixture over if you wish, to brown the other side, or brown under the grill.
5. Serve hot with mixed winter root vegetables or greens.

You could use left-over turkey or chopped, cold sausage in place of the corned beef.

In the Garden



Garden Tips for January

We look forward to 2004 with renewed hope, full of gardening ideas. 2003 was a difficult year for the gardener because of the lack of rain during the latter part of the year. Potatoes of the strong growing varieties did very well, as they produced sufficient top-growth to protect the crop from the sun. The main kidney bean crop produced little more than 50

percent of normal.

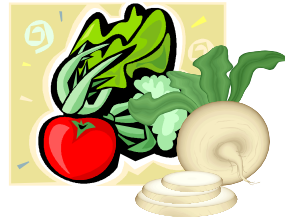
At the time of writing, the winter broad beans look good. The onion sets are growing well. Will they continue to progress or even survive the winter? Winter lettuces are now ready to prick out into cell packs. These will over-winter in the greenhouse ready for planting out under cover in February or March. Early peas and spring broad beans can be sown in containers, if you can provide somewhere with slight heat such as a propagator.

Winter digging, incorporating humus, should be completed. Young canes of early fruiting raspberries will need to be tied to supports. Autumn fruiting varieties need pruning, removing all the old canes.



Jack Bradley

**APEX
ADVERT**



For information about advertising in The Villager or inserting flyers, contact Neil Stammers, Advertising Manager, on 01886 888513. To advertise on www.martley.org.uk, email webmaster@martley.org.uk.