

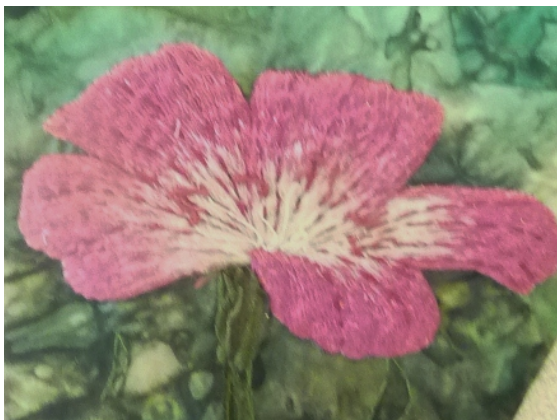
The costs below apply to registrations in 2013.

Level 1 £180 including registration and certification fees (can be paid in 2 instalments)

Level 2 £950 including registration and certification fees (can be paid in 6 instalments)

Full terms and conditions are available with the registration form. To obtain these please contact Annie Franz on 01932 260738 or Email: af Franz@embroiderersguild.com

Course Director: Gill Riordan
Email: gillriordan@embroiderersguild.com



Embroiderers' Guild

Lifelong development with
the Embroiderers Guild

Distance learning

Fun study at home

City and Guilds
Design and Craft courses
Level 1 and 2
Hand embroidery
Machine Embroidery



- Stress free
- No carrying kit around
- Do it when YOU want
- Lots of support
- Guaranteed achievement

Satisfaction and enjoyment



WHAT DO I NEED?

If you wish to study online with delivery and marking of your work online, you will need a digital camera set to macro and a pc to communicate with your tutor.

If you want to send your work by royal mail you may, but there may be an excess charge for return postage on samples and photos.

For the Machine embroidery course, you need a sewing machine where you can drop the feed dog. This is usually a lever which makes the teeth that pull fabric through drop below the sewing level. Any machine which will do this is adequate for the course.

WHAT SUPPORT DO I GET?

You will have a designated experienced tutor, who will communicate with you by email or telephone as often as you wish and offer tips, hints, reassurance and suggestions for further study.

WHY HOME STUDY?

Home study can never replace the atmosphere, company and support that you can find in a class environment. However, we do all we can to keep your confidence and enthusiasm high. Maybe you can persuade a friend to meet up with you and work together. We will offer extra residential opportunities through the year for students to meet up if they are able. When available, these will be at separate cost.

WHY THE EMBROIDERERS GUILD?

There are several companies offering online courses. Many are excellent. However, as a Guild member you have the opportunity of working with people you already know and benefitting from another advantage of membership. (Non-members can partake at a supplement of £25 level 1 and £50 level 2) The Guild is an educational charity with a commitment to excellence.

WHY START WITH LEVEL 1?

This allows you to adjust to the principles of distance learning and ensure that it is for you. You will get to know your tutor and gain confidence in your ability to go farther.

WHAT COULD I DO AFTER THESE COURSES?

There is an opportunity to continue to a diploma course with design2create at a special price. By the time you have completed these courses we hope to have a variety of additional short courses, some certificated by City and Guilds, some by the Embroiderers Guild.

FUN

FRIENDSHIP

FASCINATION

Leaving you confident, fired up and ready to take off in new creative directions.

