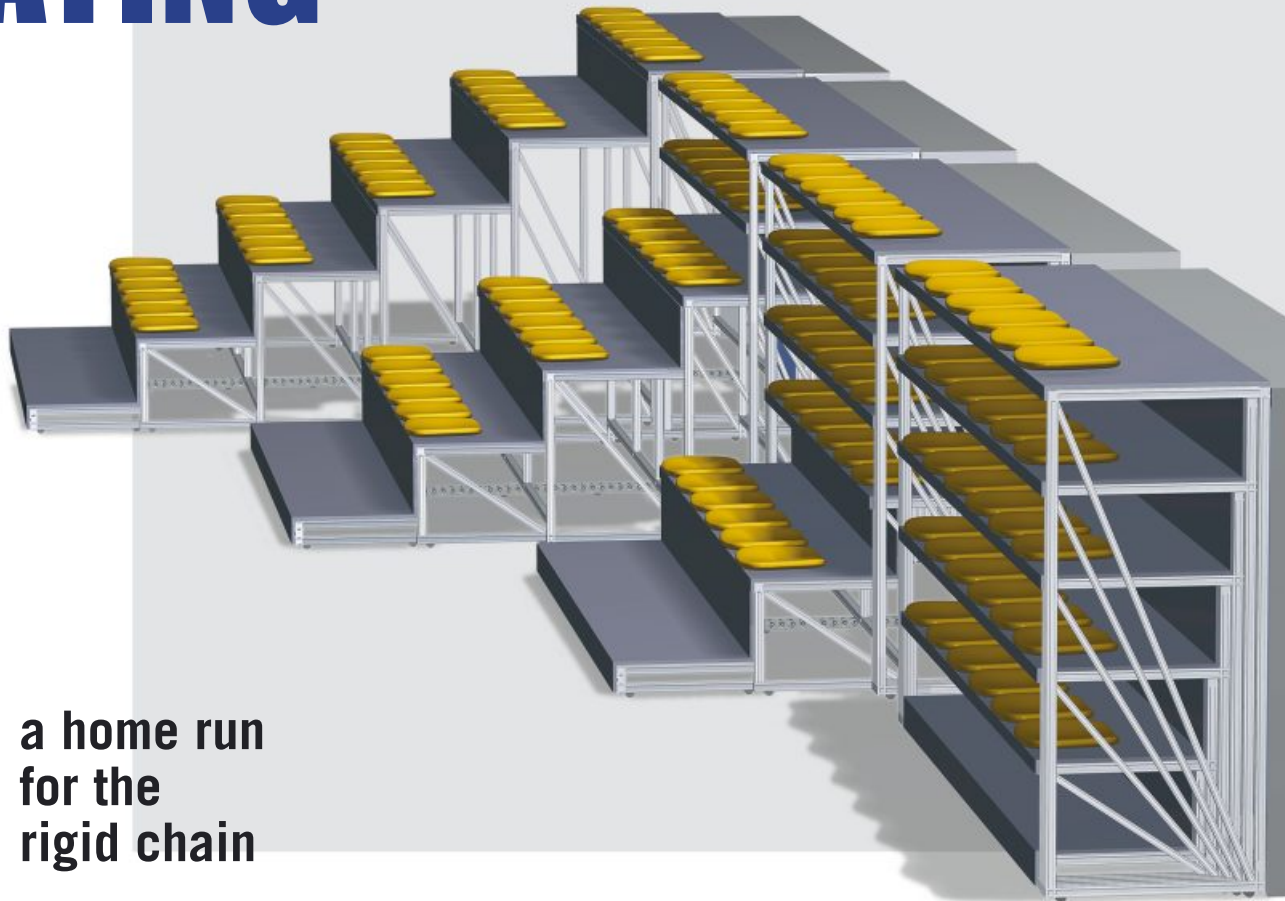


TELESCOPIC SEATING

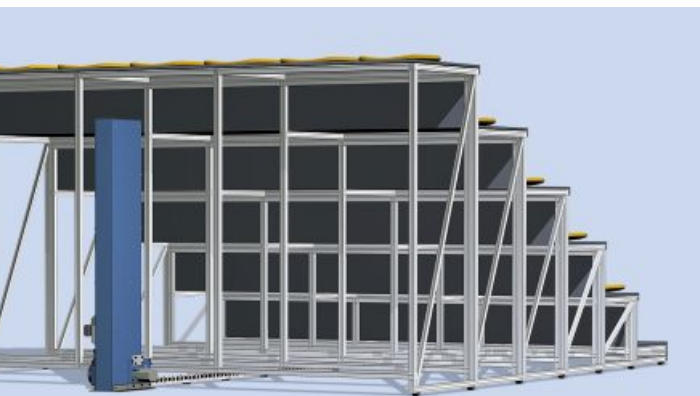


a home run for the rigid chain

Linear motion systems from SERAPID are widely used in the entertainment industry. A new type of rigid chain drive is now available for telescopic seating automation and storage. SERAPID offers a reliable, maintenance free, compact solution in multi-purpose venues.

Rigid Chain for Telescopic Seating

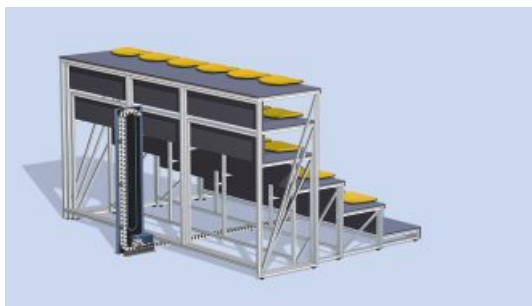
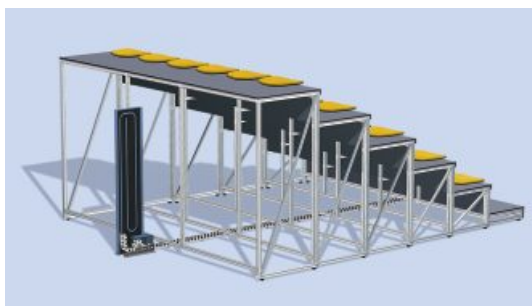
- ▶ models available to handle thrust loads of 5 kN (1100 lbf) up to 16.5 kN (3600 lbf) per single chain
- ▶ stroke length up to 30 meters (100 ft)
- ▶ speeds available up to 100 mm/s (20 fpm)
- ▶ smooth, continuous push-pull motion
- ▶ completely mechanical, maintenance free, and built to last



SERAPID
PUSHING AHEAD

TELESCOPIC SEATING

with the SERAPID rigid chain



SERAPID INC.

5400 18 Mile Road
Sterling Heights MI 48314, USA

Phone +1 586 274 0774

Fax +1 586 274 0775

info-us@serapid.com

SERAPID Ltd

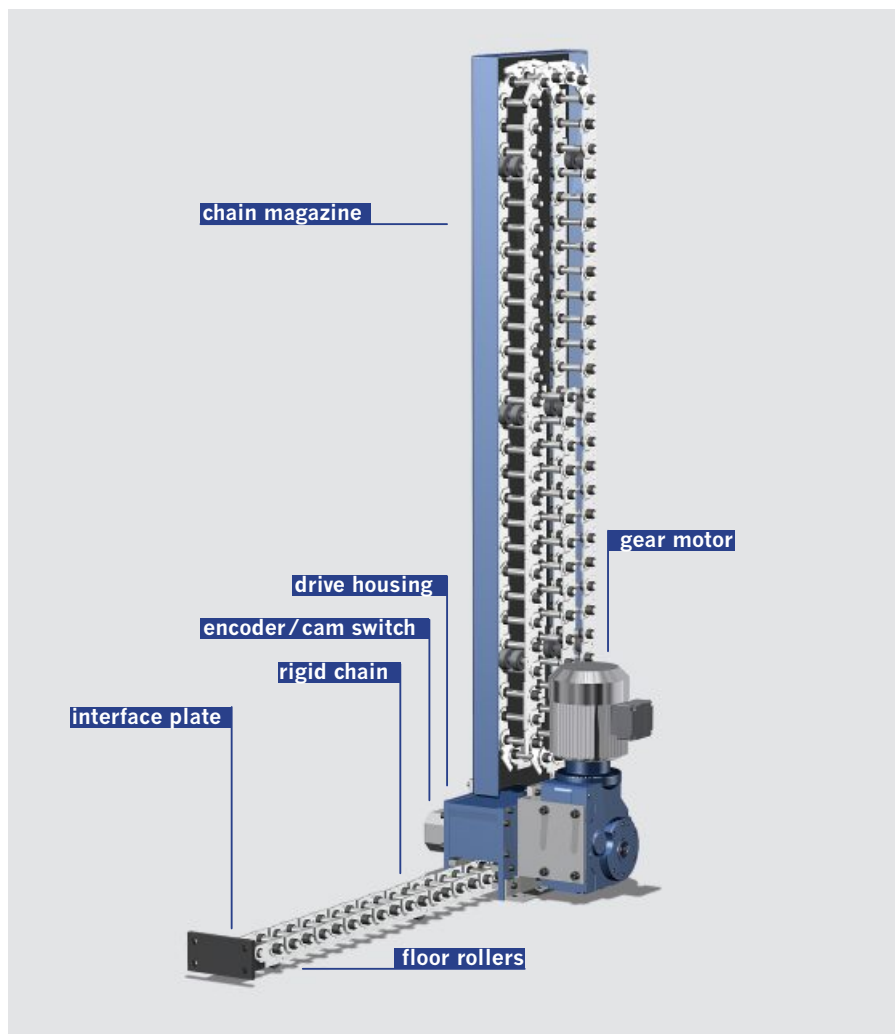
info-uk@serapid.com

SERAPID S.A.S.

info-fr@serapid.com

SERAPID Deutschland GmbH

info-de@serapid.com



Components

- ▶ **rigid chain:** capacity and stroke as required
- ▶ **floor rollers:** one pair of rollers approx. every two feet
- ▶ **interface plate:** connection to seating structure
- ▶ **drive housing:** contains sprocket wheels and guides to drive and align the chain links
- ▶ **encoder / cam switch:** positioning control
- ▶ **gear motor:** Electric is standard, optional hydraulic or pneumatic; custom sized as needed.
- ▶ **chain magazine:** storage for chain return, configured to fit available space

www.serapid.com