



COURTROOM SECURITY AND PRISONER TRANSPORT SCENARIOS

This disc contains a variety of multiple-branching scenarios that offer officers real-world training in the area of courtroom security and prisoner transport. Each will test the student's ability to exercise proper judgment, while following proper departmental policy and protocol. This disc is available in high- definition or standard-definition formats.



Child Custody Hearing

A woman who is a repeat offender and drug-user smuggles a handgun into the courtroom, planning to shoot the judge if he awards her ex-husband custody of her child. The student is faced with situations that demand the correct level of force or verbal skills. Situations range from open-hand attacks to use of a firearm.



DUI Transport

You and your partner have arrested a man for DUI and are transporting him for processing. A careless driver causes an accident. While checking to see if the driver is injured, the suspect kicks out the rear window of the cruiser and escapes. Your student is now faced with multiple situations that require split-second decision-making. This is a great exercise for training with less-than-lethal weapons.



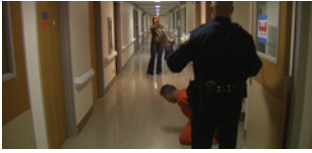
Fake Heart Attack

While transporting a prisoner to a correctional facility, he fakes a heart attack and is taken to a local hospital. Upon arriving, he dashes away and manages to elude officers for several minutes. Screams are heard down a hallway, where the prisoner has taken a nurse hostage. Your students will be presented with situations that require negotiation skills on up to the use of deadly force.



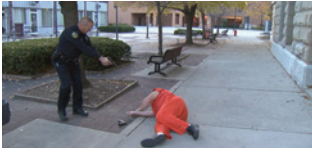
Vendetta

You and a fellow officer escort a prisoner who has been charged with multiple counts, including child molestation. This case has received a lot of media coverage, and the community demands that justice be served. An angry crowd has assembled outside and you and your deputies are on full alert. A great exercise in assertiveness training.



Assisted Escape Attempt

You and a fellow officer escort a prisoner to a local hospital for surgery. The inmate's wife appears and, at gunpoint, demands his release. This exercise will require cool heads and split-second decision-making to defuse a volatile situation. A great exercise for students to ramp up their communication skills.



Unrestrained Prisoner

An accused murderer is handcuffed and not wearing leg restraints. Suddenly, he overpowers an armed officer, takes his weapon and begins shooting rampantly. This scenario demands that the student be aware of surroundings and consider the number of innocent bystanders in the line of fire.



Wrongful Use of Force Exercise

This involves an unruly prisoner who refuses to exit a vehicle. Despite numerous commands, the suspect refuses. Your partner draws his Taser and/or baton and threatens to use them on the restrained prisoner. Your student's responsibility is to interact with his partner to stop him from violating policy.



Courthouse Entry Point

You have been assigned to screening duty at a courthouse. The defendant's family members have stated he will not go to jail under any circumstances. Your student will experience situations ranging from the innocent mistake of someone passing through the metal detector with detectable items on their person, to a legitimate jailbreak. This scenario is designed to heighten your student's assertiveness and attention-to-detail skills.



Upset Client

A defendant becomes agitated when the judge levies a huge bond. The defendant then turns his anger towards his lawyer and begins assaulting him. This scenario will test your students' skills in rapid deployment and delivery of less-than-lethal weapons systems, as well as the use of deadly force.



Off Duty at Restaurant

You are armed and off duty at a favorite restaurant. Seated next to you, a judge is dining with his family. The meal is interrupted by a chef who was once sentenced by the judge. There are multiple possible outcomes, ranging from verbal assaults to physical assaults to even murder. A great exercise for concealed-carry situations.



Holster Drill

These exercises are designed to test and improve an officer's reaction time when confronted with a deadly threat. Each drill starts with the student's weapon holstered and facing the threat subject. A timer displayed in real time will show reaction time and the amount of time it takes to stop the threat. This is an excellent tool for maintaining the muscle memory needed for drawing a weapon smoothly and quickly from its holster.