

TRUfusion Enterprise® & ENOVIA SmarTeam® Integration



TRUBIQUITY®

Combine automated file transfer functionalities with the ENOVIA SmarTeam® PLM solution

Are you looking to:

- ▶ Benefit from the integration of TRUfusion Enterprise and the ENOVIA SmarTeam® PLM system to automate and streamline your product design data exchange processes?
- ▶ Connect these two enterprise systems and use one user interface?
- ▶ Integrate automated product data exchange with ENOVIA SmarTeam® workflows?
- ▶ Review the status of your data exchange transactions without leaving ENOVIA SmarTeam®?
- ▶ Increase user productivity by avoiding manual steps when sending product design data to customers and suppliers?



Realize Automated Internal and External Data Exchange Within the ENOVIA SmarTeam® PLM Solution

Many companies have invested in ENOVIA SmarTeam® to manage their product design data. This integration combines the benefits of this solution with those of TRUfusion Enterprise® which is used to automate, control and manage the distribution of product data and related documents both internally within an Enterprise® and externally to customers, partners and suppliers.

ENOVIA SmarTeam®

ENOVIA SmarTeam® is a scalable PLM solution to manage product design data from early concept design right through to the manufacturing phases.

TRUfusion Enterprise®

TRUfusion Enterprise® automates the manual importing, exporting, transformation, encryption and transportation of product design data. It enables global data exchange with all business partners. TRUfusion Enterprise® manages all backend data

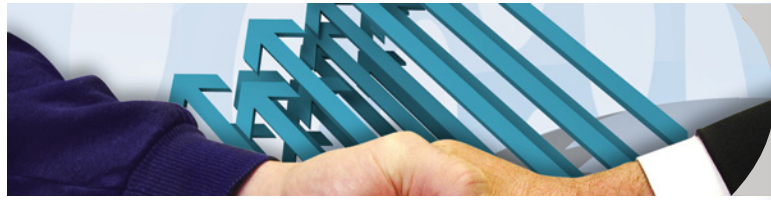
transformations and transfers while automatically storing details on all data exchange activities. Often more than 80% less time is needed with an automated process compared to manual processes for product design data exchange. This helps companies improve employee productivity and speed up decision making in their extended Enterprise® activities.

Integrate Both Systems - Improve, Simplify and Automate Design Collaboration Processes

With the integration of ENOVIA SmarTeam® and TRUfusion



Enterprise® Trubiquity now provides the opportunity to use the functionalities of both systems at the same time. This means that you are able to benefit from TRUfusion Enterprise® functions within the ENOVIA SmarTeam® user interface without the need to use two solutions one after the other to achieve the task. Product design data exchanges can be executed within ENOVIA SmarTeam® directly



TRUfusion Enterprise® & SmarTeam®

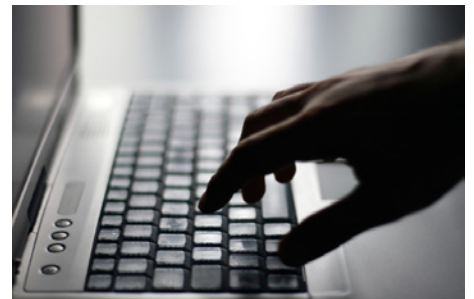
TRUBIQUITY®

Combine automated file transfer functionalities with the ENOVIA SmarTeam® PLM solution

without any manual intervention whilst TRUfusion Enterprise® works in batch mode in the background to guarantee reliable execution of necessary automated steps to deliver the right data, in the right format and at the right time.

An integration to provide new functionalities

The integration of these two solutions enables users to exchange parts, assemblies, drawings and other related documents that the user has permission to access within the PLM system. Product structures can now be reviewed before they are exported or imported with the option for defining partner specific rules. The combination of ENOVIA SmarTeam® and TRUfusion Enterprise®, together with the bi-directional data exchange capabilities, shortens and simplifies all processes with the confidence that all transactions are recorded for audit trail and compliance requirements.



Key functionalities include:

For data export out of Enovia SmarTeam®:

- » Selection of data to be exported using the structure navigator and resolution functionality
- » Multi-level controls of object owners, project environments and object status before export
- » Data may be selected for export previewed and then specific items can be removed
- » CAD data can be renamed according to partner specific naming conventions
- » The TRUfusion Enterprise® Wizard allows the selection of the recipients and the option to add files from the file system to the export job
- » Data is processed, sent and archived using TRUfusion Enterprise® core functionality and as a background batch process
- » The export job information is recorded in Enovia SmarTeam® for user access and review

For data import to Enovia SmarTeam®:

- » Automatic data receipt by TRUfusion Enterprise®
- » Extraction of assembly data upon receipt
- » Selection of the data to be imported is made within the SmarTeam® user interface
- » Import data can be previewed together with structure matching with data already stored in SmarTeam®
- » Import data can be renamed according to SmarTeam® naming conventions
- » Data import conflict resolution options by creating new items or new revisions of existing items
- » The import job information is recorded in SmarTeam® for user access and review

TRUfusion Enterprise® & SmarTeam®

TRUBIQUITY®

Combine automated file transfer functionalities with the ENOVIA SmarTeam® PLM solution

Compelling Benefits

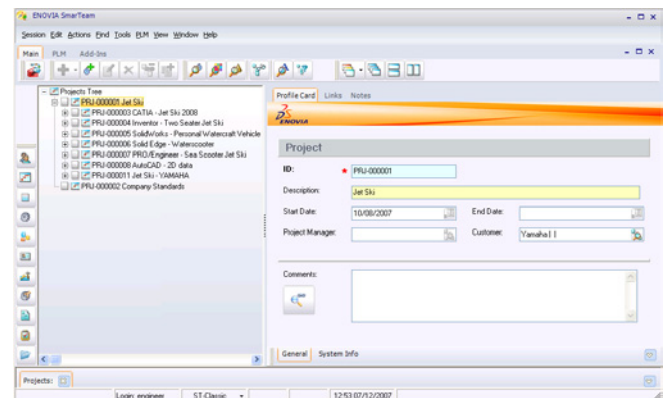
- ▶ Leverage and extend the value of ENOVIA SmarTeam® managed data with partners in the extended enterprise
- ▶ Combined PLM and data exchange workflow automation eliminates cost, delays and risks associated with importing, exporting and transporting product design data
- ▶ Assurance that no duplicate data exist outside the confines of the PLM system to minimize the risks that out of date data is exchange with partners
- ▶ Enforce workflow automation processes to maintain a single master for all data
- ▶ Increase the security, visibility and traceability of important product design data assets that are exchanged with others
- ▶ Ensure data quality, standardization and compliance throughout all product design activities

System Requirements

- ▶ ENOVIA SmarTeam® R 19
- ▶ TRUfusion V 6 and above

Formats Supported

- ▶ CATIA V5 R 19
- ▶ Other file types as managed by ENOVIA SmarTeam®



Trubiquity is a leading global provider of MFT (managed file transfer), process automation and integration solutions for 6,500 companies with 60,000 users in more than 40 countries. For more than 25 years, we have served the automotive, aerospace, manufacturing, retail, finance, healthcare and consumer goods industries. Trubiquity solutions improve our customer's ability to control and protect data within their business and among external partners. Trubiquity is headquartered in Troy, Michigan, USA with facilities in California and international offices in Germany and the United Kingdom. For more information, visit www.trubiquity.com

TRUBIQUITY®

USA: +1 (248) 833-9000
UK: +44 (0) 1132-454-305

GERMANY: +49 (0) 621-39155-0

www.trubiquity.com